

GREEN MOWER

LM55GD • LM55GDF

LM65GD • LM65GDF

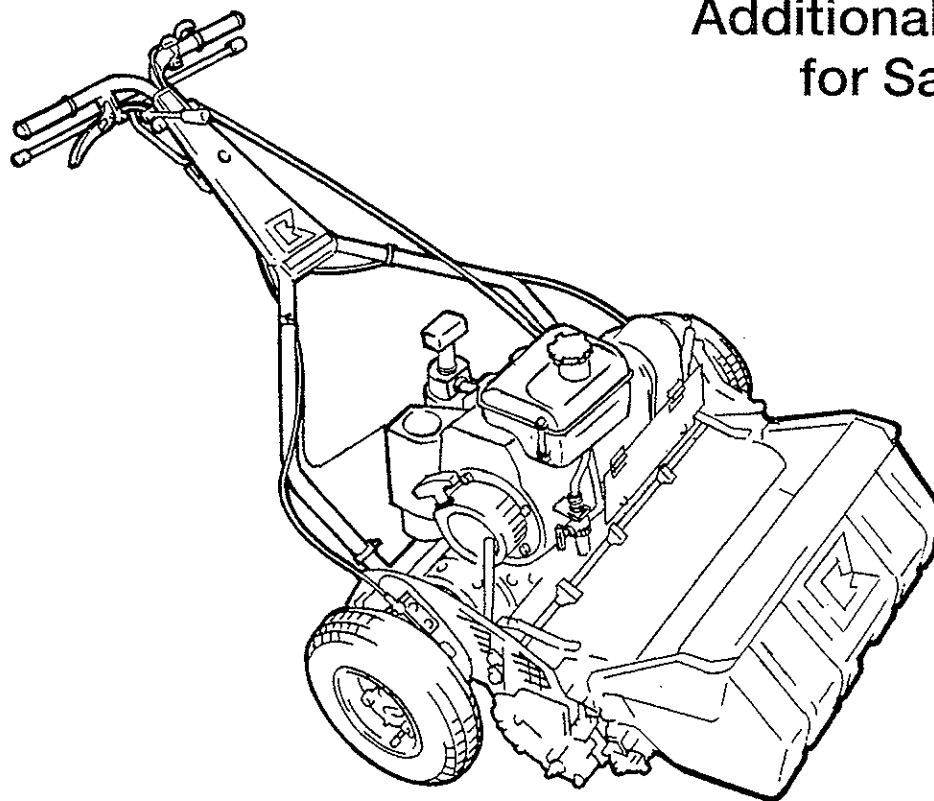
TEERING GROUND MOWER

LM65TD • LM65TDS

# BARONNESS

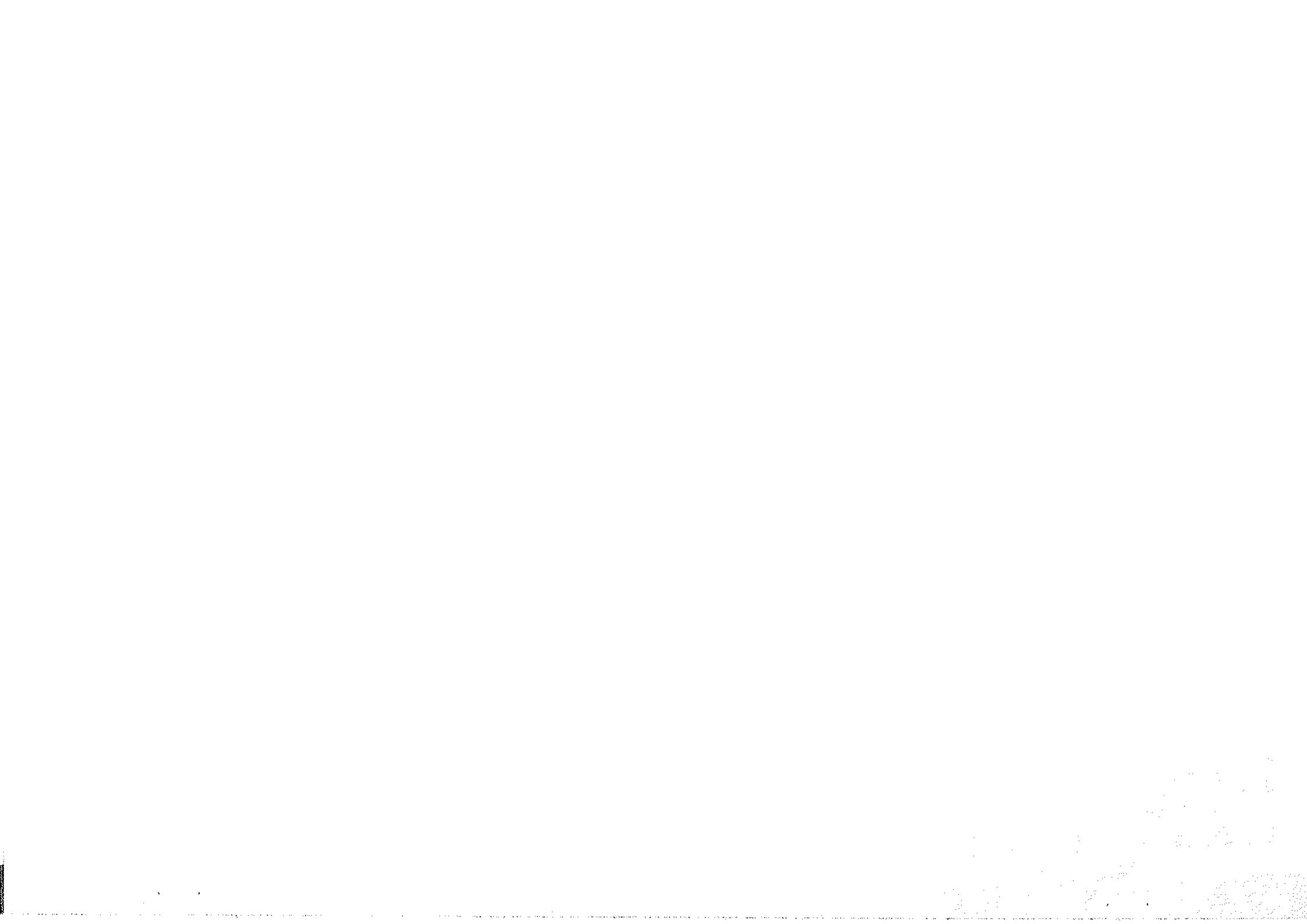
# LAWN MOWER

Additional Manual & Parts Catalog  
for Saxon 2001 HC Model

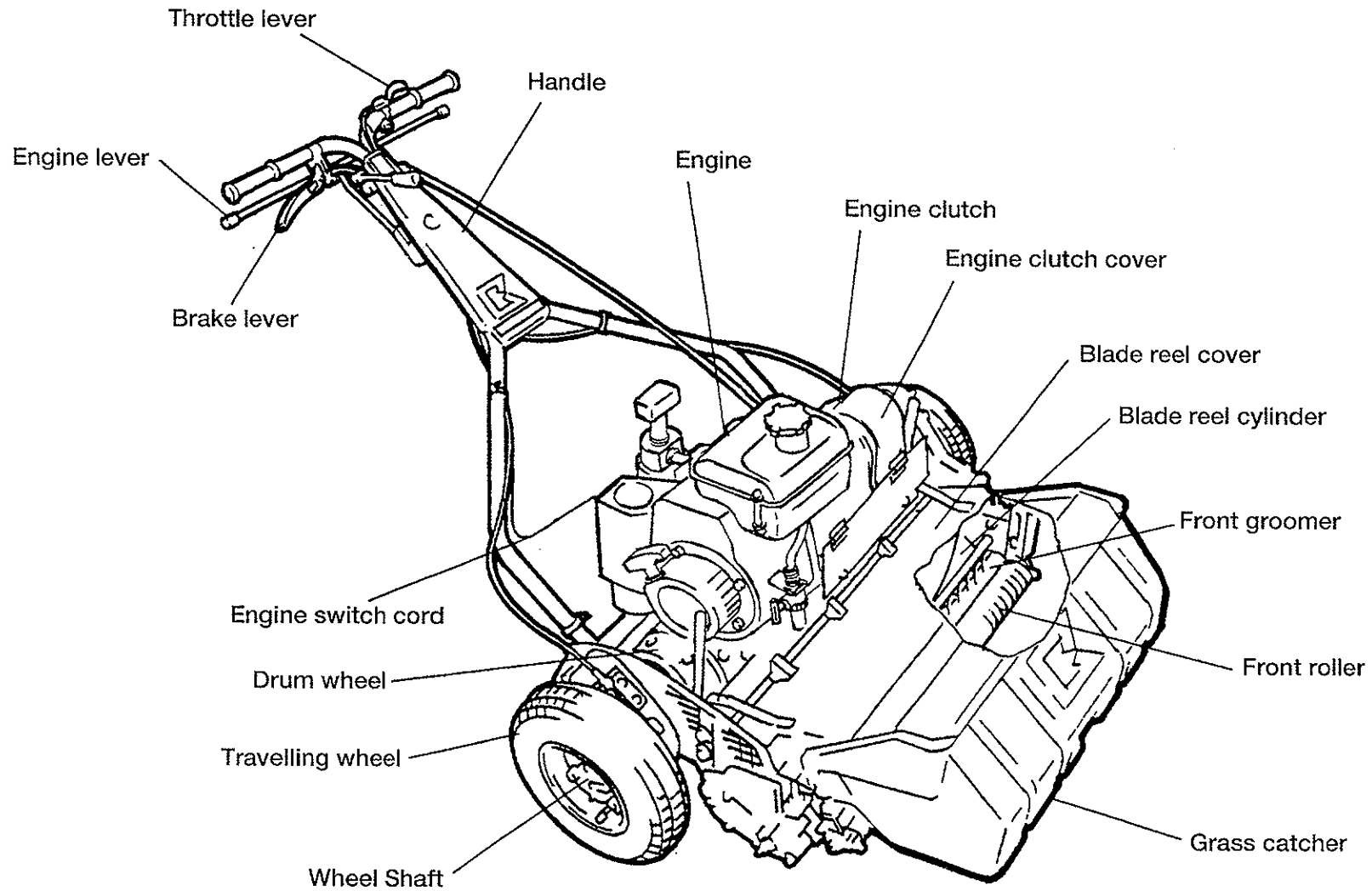


Read this manual before using the machine.

# BARONNESS



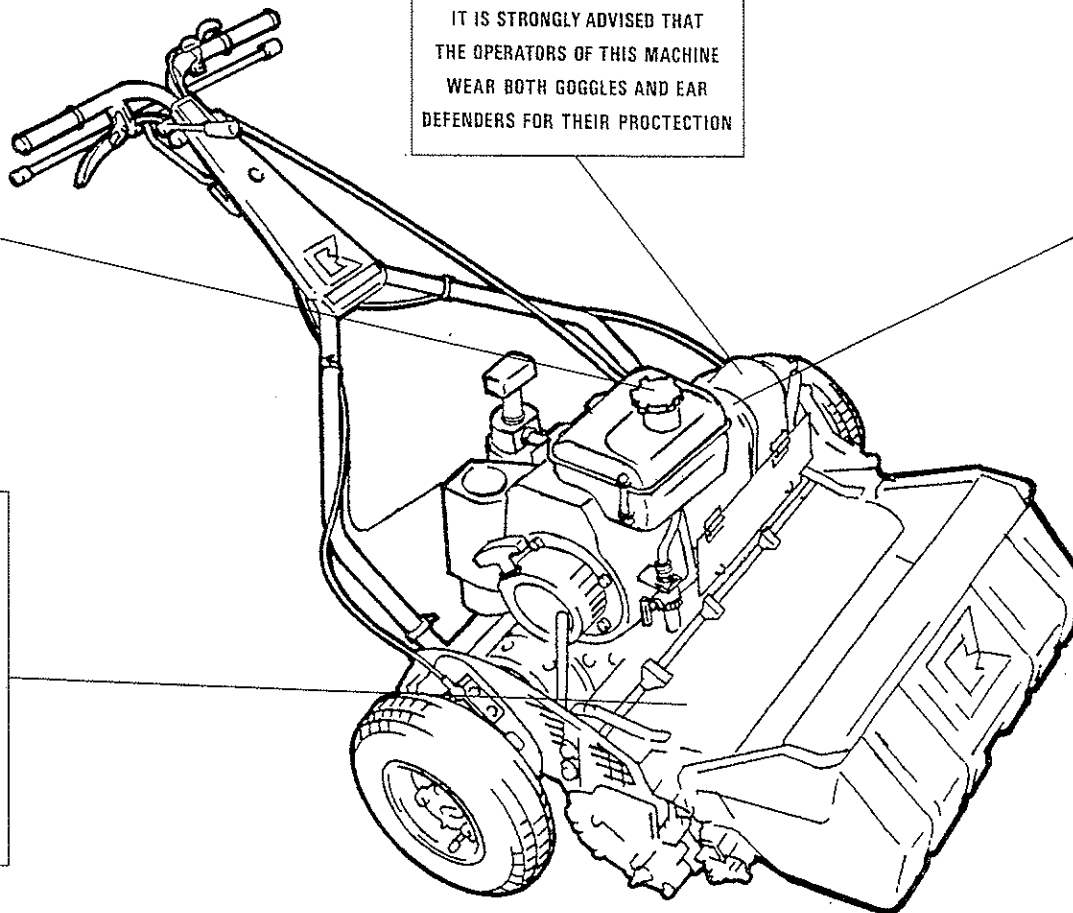
# 1. Part names



## Location of labels



**DANGER**  
KEEP HANDS  
& FEET AWAY



### HEALTH & SAFETY WARNING

IT IS STRONGLY ADVISED THAT  
THE OPERATORS OF THIS MACHINE  
WEAR BOTH GOGGLES AND EAR  
DEFENDERS FOR THEIR PROTECTION

### SAFETY INSTRUCTIONS

- (1) Know your controls. Read the owner's manual carefully. Learn how to stop the engine quickly in any emergency.
- (2) Before starting the engine, ensure that all guards are in position and gear lever is in neutral and clutch lever in neutral.
- (3) Eliminate all naked flames and cigarettes. Switch off engine before filling with petrol. Avoid spillage.
- (4) Keep spectators clear and hands and feet away from moving parts at all times.
- (5) When operating on sloping or undulating ground, take extra care that you have complete control of the machine and that you do not exceed an angle of 30°.
- (6) Switch off engine before cleaning, oiling or adjusting the machine. Check for loose and missing bolts daily.
- (7) Do not mow whilst people, especially children or pets, are in the area.
- (8) Do not operate the engine in a confined space where exhaust fumes (carbon monoxide) can collect.
- (9) Stop engine whenever you leave the mower.
- (10) Do not allow children or people unfamiliar with these instructions to use the mower.
- (11) Never operate this machine wearing loose clothing particularly if it has drawstrings which could wrap around or get caught in the machinery.

## 5. Inspection before use

### 5-1. Greasing



The transmission and intermediate transmission gears for the groomer shaft are equipped with needle bearings. Grease them every 10 hours. Shortage of grease will cause heat generation and a grating sound.

### 5-2.

Replenish the engine with engine oil. (A correct level will be shown when the engine is placed horizontally.) Change engine oil 5 hours after the initial operation, and every 50 hours from the second time onward. Oil : SAE30.

## 6. Fastening of each portion

Many parts are fastened by bolts. Bolts and nuts may be loosened some time after initial operation. Fasten them to the specified torque.

Appropriate fastening torque N.m (kgf-cm)


	Normal bolt	Heat treated bolt
M6	7.8 (80)	
M8	17.7 (180)	35.3 (360)
M10	35.3 (360)	70.6 (720)
M16	1.5-pitch left-hand thread: 35.3 (360 kgf-cm)	

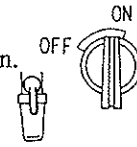
## 7. Engine starting sequence

### 7-1. Before starting engine


Carefully read the gasoline engine operation manual before starting the engine. Check the ON/OFF positions of the engine switch lever at the front of the handle. Set the engine switch lever in the ON position, set all moving parts in the neutral position. Check for safety - covers are in position and not damaged and there is no person around the machine - before starting the engine. Do not start the engine indoors without an appropriate ventilator.

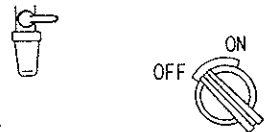
### 7-2. Starting the engine

- (1) Set the clutch lever in the OFF position.
- (2) Set the throttle lever in the high-speed  position.
- (3) Grab the engine lever.
- (4) Set the strainer lever in the open position.
- (5) Pull the choke lever and pull the recoil starter, and the engine will start.
- (6) Return the choke lever.



### 7-3. Stopping the engine (Remember the method for stopping the engine in an emergency.)

- (1) Set the clutch lever in the OFF position.
- (2) Set the throttle lever in the slow-speed  position.
- (3) Set the strainer lever in the close position.
- (4) Release the engine lever.
- (5) Release the engine lever immediately in an emergency.



### 7-4. Fuel supply Gasoline for automobiles

- (1) Keep flame etc. away from the engine when supplying fuel. Stop the engine outdoors and allow it to cool before supplying fuel.
- (2) Keep the machine clean at all times to prevent deposition of dust, grease, or oil.

### 7-5. When leaving the machine

Park the machine on a flat place. Do not park the machine on a slope.

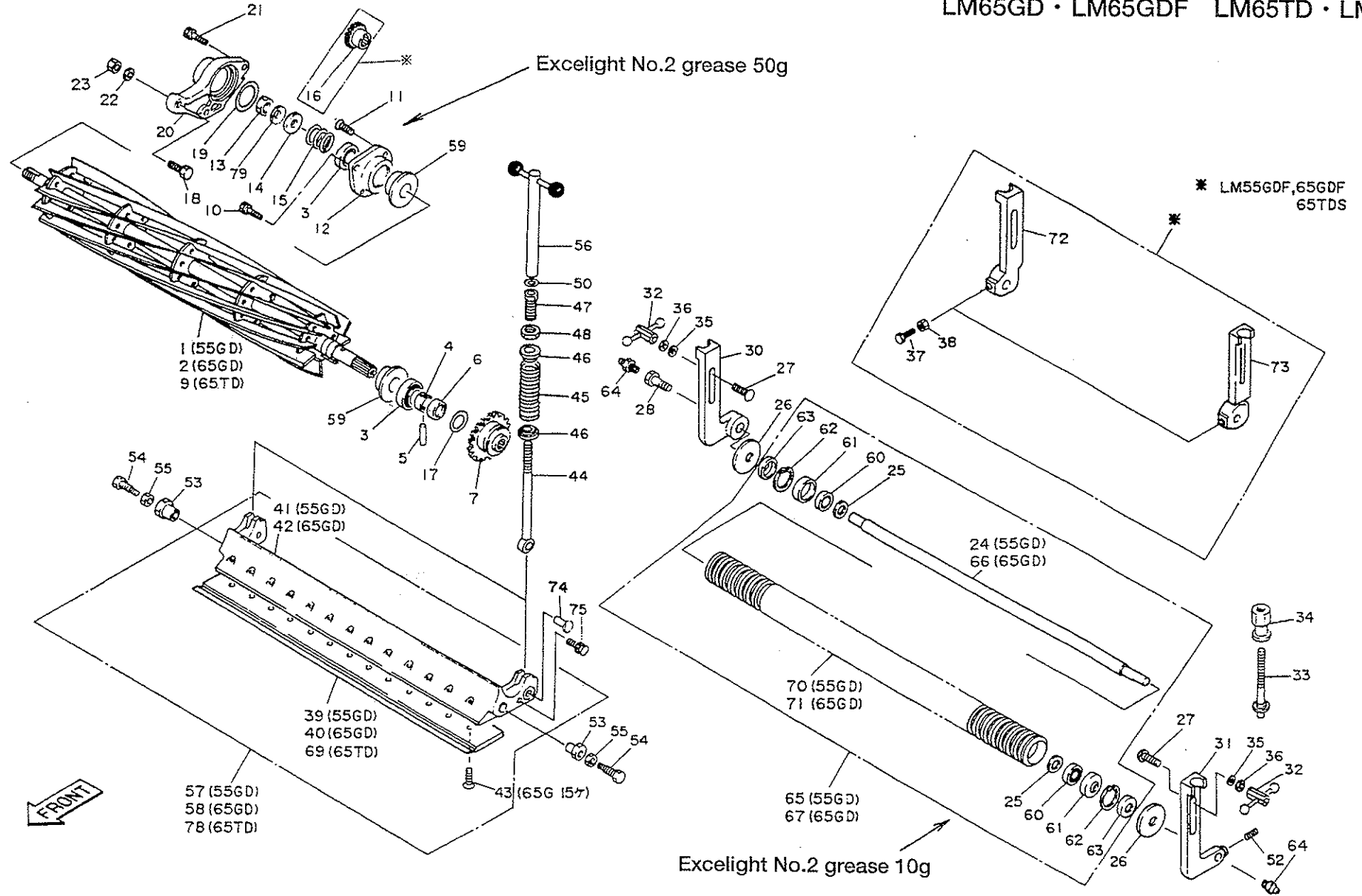
## 8. Machine operation

### 8-1.

Check that each portion - especially the brake and clutch - operates satisfactorily before starting machine operation. Make sure that the machine can be stopped immediately at any time. Exercise care so that you and people around the machine will not be injured.

1. Blade reel cylinder/bottom blade

LM55GD • LM55GDF  
LM65GD • LM65GDF LM65TD • LM65TDS



Catalog No.	Code No.	Part Name	Qty /Unit	Common Part	Retail Price
1-1	K 2 8 0 5 5 0 1 1 D R	Blade reel cylinder 577-11	1		
1-2	K 2 8 0 6 5 0 0 9 D R	Blade reel cylinder 646-9	1		
1-3	K 0 6 3 1 3 0 2 0 4 0	Tapered roller 30204JRP6	2	○	
1-4	K 6 2 1 3 0 0 0 0 4 0	Left bearing collar	1	○	
1-5	K 0 3 1 1 0 4 5 2 5 0	4.5 needle roller 25.8	1		
1-6	K 5 3 0 0 0 0 0 2 8 2	Pinning cover	1	○	
1-7	L M 5 5 G D - 2 5 0 1 Z 0	36-tooth reel gear	1	○	
1-8					
1-9	K 2 8 0 6 5 0 0 7 D R	Blade reel cylinder 646-7	1		
1-10	K 0 0 0 7 0 8 0 2 5 2	8 bolt 25 SW	1	○	
1-11	K 0 0 4 1 0 8 0 2 0 2	8 + countersunk head screw 20	3	○	
1-12	L M 5 5 G C - 0 1 0 8 A 2	Right reel housing	1	○	
1-13	K 0 1 8 5 1 6 0 0 0 2	16 left-hand threaded nut 3P1.5	1		
1-14	K 5 0 1 2 0 1 6 2 8 2	2SPCC washer 1628	1		
1-15	K 1 0 0 0 0 0 0 7 4 0	3.2 compression spring 26.9 22	1		
1-16	L M 5 5 G D F 1 2 0 6 Z 0	23-tooth reel gear	1		
1-17	K 0 8 8 0 0 1 8 0 0 0	O-ring P18	1	○	
1-18	K 0 0 0 0 0 8 0 4 5 2	8 bolt 45	1	○	
1-19	K 0 8 8 2 0 4 5 0 0 0	O-ring G45	1	○	
1-20	L M 5 5 G C - 1 2 1 1 Z D	Cover	1	○	
1-21	K 0 0 0 7 0 8 0 2 5 2	8 bolt 25 SW	1	○	
1-22	K 0 2 1 3 0 8 0 0 0 1	8 disc spring washer 1H	1	○	
1-23	K 0 1 0 0 0 8 0 0 0 2	8 nut	1	○	
1-24	K 6 1 3 1 0 0 0 1 2 2	Front roller shaft 596	1	○	
1-25	K 5 0 5 1 0 1 5 2 8 0	1C5191P washer 1528	2	○	
1-26	K 5 0 5 1 0 1 5 4 7 0	1C5191P washer 1547	2	○	
1-27	K 0 0 2 5 0 8 0 3 5 2	8 square-based round-head bolt 35	2	○	
1-28	K 6 0 8 3 0 0 0 0 4 3	15 extension pin 19	1	○	
1-29					
1-30	L M 5 5 G D - 0 4 0 8 Z D	Right roller bracket	1	○	
1-31	L M 5 5 G D - 0 4 0 5 Z D	Left roller bracket	1	○	
1-32	K 1 3 3 0 0 0 0 0 5 0	Screw with handle P1.25	2	○	
1-33	K 7 9 0 0 0 0 0 0 5 0	Roller adjusting screw	2	○	
1-34	K 6 0 8 4 0 0 0 0 6 3	Roller adjuster	2	○	
1-35	K 5 0 1 2 0 0 8 1 8 3	2SPCC washer 818	2	○	

○: Parts common to LM55GC

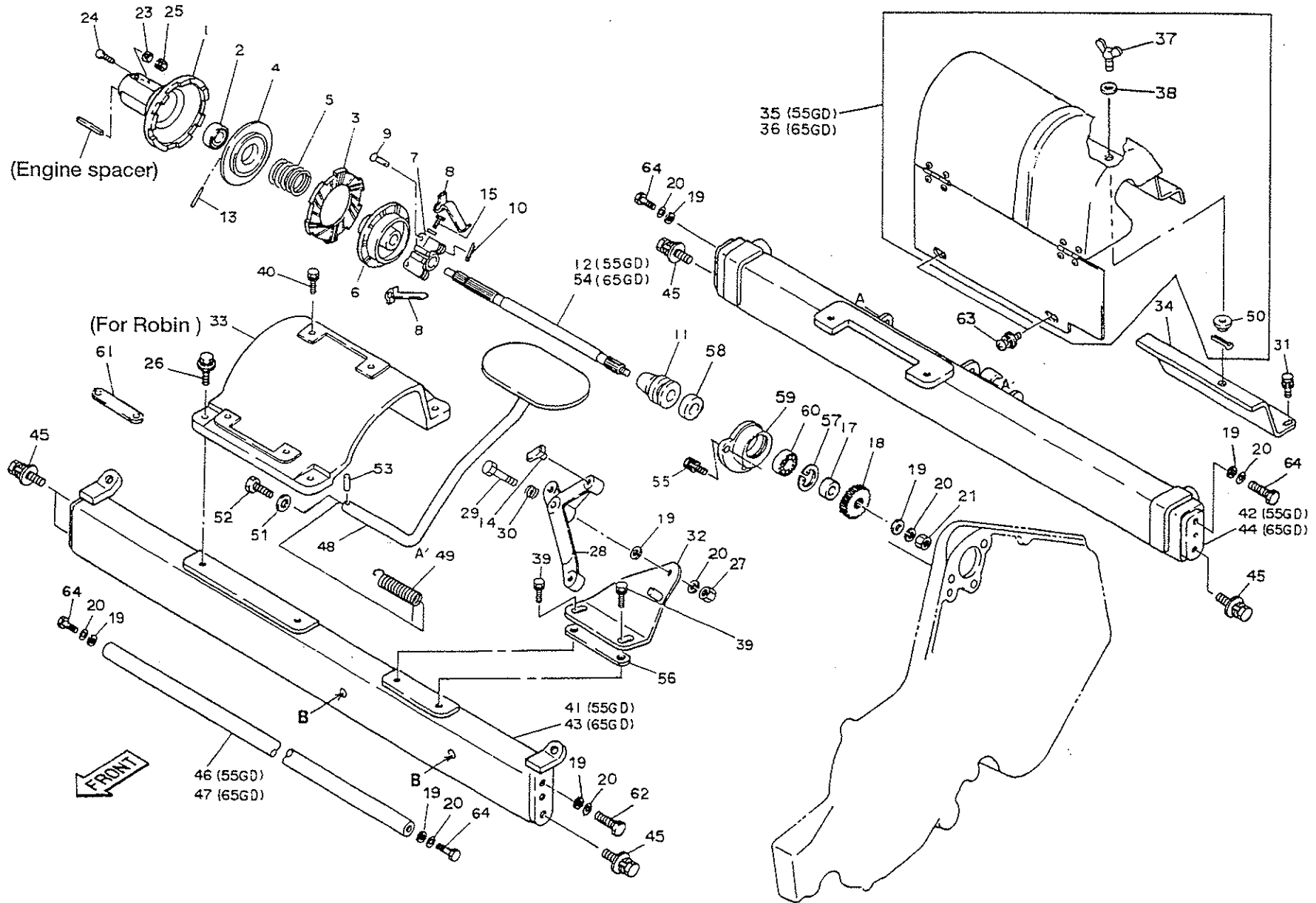
Catalog No.	Code No.	Part Name	Qty /Unit	Common Part	Retail Price
1-36	K 0 2 1 3 0 8 0 0 0 1	8 disc spring washer 1H	2	○	
1-37	K 0 0 0 0 0 6 0 2 0 2	6 bolt 20	2	○	
1-38	K 0 1 0 0 0 6 0 0 0 2	6 nut	2	○	
※1-39	K 2 5 1 0 0 0 0 0 6 0	3 bottom blade 62.5-559	1	○	
※1-40	K 2 5 1 0 0 0 0 1 5 0	3 bottom blade 62.5-648.4	1	○	
※1-41	L M 5 5 G C - 0 5 0 8 Z R	Bottom blade base	1	○	
※1-42	L M 6 5 G C - 0 5 0 8 Z R	Bottom blade base	1	○	
1-43	K 0 0 7 1 0 0 0 2 2 2	6 heat treated countersunk head screw 12	13(15)	○	
1-44	K 6 5 1 1 0 0 0 0 6 2	Cutter adjusting bolt 205	2	○	
1-45	K 1 0 0 0 0 0 0 2 8 8	5 compression spring 25116	2	○	
1-46	K 6 2 0 6 0 0 0 0 5 2	Spring receiver	4	○	
1-47	K 6 0 8 1 0 0 0 0 3 2	Threaded pipe	2	○	
1-48	K 0 1 6 0 0 0 0 1 2 2	Cutter adjusting lock nut	2	○	
1-49					
1-50	K 5 0 1 1 0 1 0 1 6 2	1SPCC washer 1016	2	○	
1-51					
1-52	K 0 0 2 8 0 6 0 1 0 0	6 stainless hollow set 10	2	○	
1-53	K 6 0 1 0 0 0 0 0 1 0	Cam bush	2	○	
1-54	K 6 0 8 2 0 0 0 0 1 0	Cutter pin R	2	○	
1-55	K 0 1 6 0 0 0 0 1 1 2	Lock nut	2	○	
1-56	K 1 3 3 0 0 0 0 0 4 0	Cutter adjuster ass'y	2	○	
1-57	L M 5 5 G D - 2 7 1 0 Z 0	Bottom blade COMP 55	1	○	
1-58	L M 6 5 G D - 2 7 1 0 Z 0	Bottom blade COMP 65	1	○	
1-59	K 0 8 3 0 0 0 0 0 2 0	Oil seal 254210	2	○	
1-60	K 0 6 1 6 0 6 2 0 2 0	Bearing 6202 2NSE	2	○	
1-61	K 0 8 6 1 0 0 0 0 3 0	Oil seal 6202	2	○	
1-62	K 0 4 0 2 0 4 2 0 0 1	Stop ring R42	2	○	
1-63	K 0 8 6 1 0 0 0 0 2 0	Oil seal TA1542.38	2	○	
1-64	K 1 4 4 0 0 0 0 0 1 2	Grease nipple	2	○	
※1-65	K 8 0 2 1 0 0 0 3 1 0	Grooved roller ass'y 577	1	○	
※1-66	K 6 1 3 1 0 0 0 1 3 2	Front roller shaft 685	1	○	
※1-67	K 8 0 2 1 0 0 0 3 2 0	Grooved roller ass'y 666	1	○	
1-68					
※1-69	K 2 5 1 0 0 0 0 1 7 0	5 bottom blade 62.5-648.4	1		
1-70	K 6 2 0 2 0 0 0 3 9 D	9.9 grooved roller 577	1	○	

## 1. Blade reel cylinder/bottom blade

LM55GD • LM55GDF  
LM65GD • LM65GDF LM65TD • LM65TDS

3. Engine clutch

LM55GD • LM55GDF  
LM65GD • LM65GDF LM65TD • LM65TDS





Catalog No.	Code No.	Part Name	Qty /Unit	Common Part	Retail Price
3-1	K 6 9 1 1 0 0 0 0 5 0	Engine clutch	1	○	
3-2	K 0 6 1 6 0 6 2 0 2 0	Bearing 62022NSEC3	1	○	
3-3	K 1 8 1 0 0 0 0 0 3 0	Clutch disc	1	○	
3-4	K 6 9 1 1 0 0 0 0 4 2	Disc receiver 15	1	○	
3-5	K 1 0 0 0 0 0 0 1 6 0	3.5 compression spring 3415	1	○	
3-6	K 6 9 1 1 0 0 0 0 2 2	Clutch plate	1	○	
3-7	K 6 3 1 0 0 0 0 0 1 2	Lever mounting base	1	○	
3-8	K 1 0 9 0 0 0 0 0 1 0	Clutch spring	2	○	
3-9	K 6 0 4 0 0 6 0 2 8 2	6 round head pin 28	2	○	
3-10	K 0 3 0 0 0 2 0 2 0 2	2 cotter pin 20	2	○	
3-11	K 6 3 1 1 0 0 0 0 1 2	Clutch	1	○	
3-12	K 6 1 0 0 0 0 0 0 2 3	Engine clutch shaft 303 55G	1	○	
3-13	K 0 3 1 0 0 5 0 4 0 2	5 taper pin 40	1	○	
3-14	K 6 3 1 0 0 0 0 0 2 2	Clutch mover	1	○	
3-15	K 0 0 1 3 0 6 0 2 5 1	6 heat treated bolt 25	1	○	
3-16			1	○	
3-17	K 6 2 1 2 0 0 1 0 6 0	17.1STKM collar 2214	1	○	
3-18	K 6 1 8 6 0 0 0 0 2 0	16-tooth gear	1	○	
3-19	K 5 0 0 2 1 0 0 0 0 2	10 washer 22	5	○	
3-20	K 0 2 1 3 1 0 0 0 0 3	10 disc spring washer 1H	6	○	
3-21	K 0 1 6 0 0 0 0 2 8 2	10 nut 3P10H1	1		
3-22	K 5 0 0 2 0 8 0 0 0 2	8 washer	1	○	
3-23	K 5 0 0 0 0 6 0 0 0 2	6 washer	3	○	
3-24	K 0 0 0 0 0 6 0 3 0 2	6 bolt 30	1	○	
3-25	K 0 1 4 3 0 6 0 0 0 2	6 nut with disc spring	4	○	
3-26	K 0 0 0 7 0 8 0 3 0 2	8 bolt 30 SW	4	○	
3-27	K 0 1 0 1 1 0 0 0 0 2	10 nut 2	1	○	
3-28	K 6 9 1 1 0 0 0 0 3 2	Clutch L-shaped lever	1	○	
3-29	K 0 0 0 3 1 0 0 5 0 2	10 bolt 50	1	○	
3-30	K 1 0 0 0 0 0 0 2 0 8	2 compression spring 1514	1	○	
3-31	K 0 0 0 7 0 8 0 1 5 2	8 bolt 15 SW	2	○	
3-32	LM 5 5 GC-0 7 1 1 A R	L-shaped lever mounting bracket	1	○	
3-33	K 6 8 1 0 0 0 0 0 6 0	Engine base M	1	○	
3-34	K 9 1 0 0 0 0 0 0 8 0	Clutch cover rear COMP	1		
3-35	K 9 1 0 0 0 0 0 0 6 0	Clutch cover ass'y 265	1		

○: Parts common to LM55GC

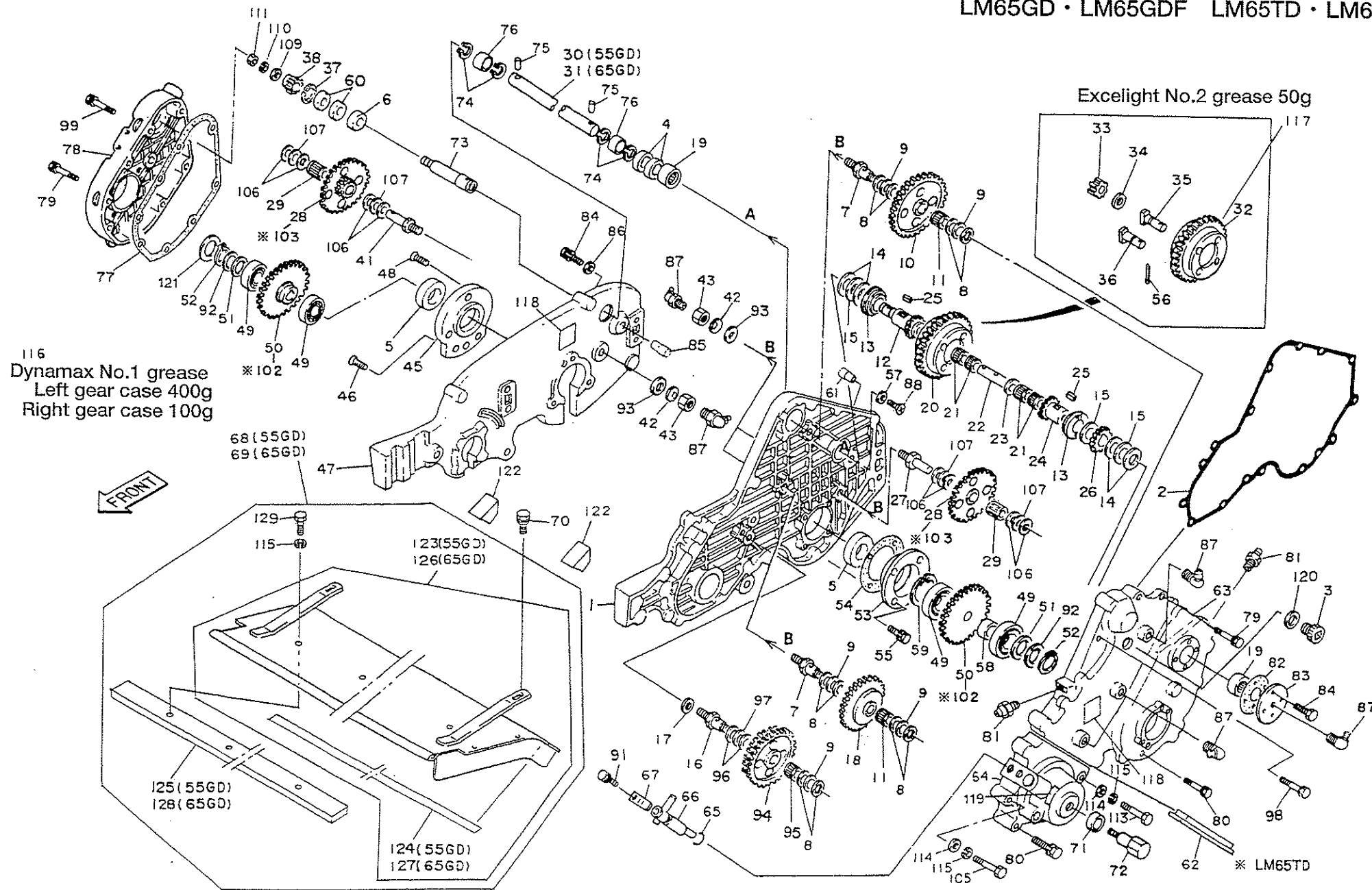
Catalog No.	Code No.	Part Name	Qty /Unit	Common Part	Retail Price
3-36	K 9 1 0 0 0 0 0 1 2 0	Clutch cover ass'y 325	1		
3-37	K 0 0 7 1 0 0 0 8 8 3	8 wing bolt with hole	1		
3-38	K 5 0 0 0 0 8 0 0 0 3	8 washer	2	○	
3-39	K 0 0 0 7 0 8 0 2 0 2	8 bolt 20 SW	2	○	
3-40	K 0 0 0 7 0 8 0 4 0 2	8 bolt 40 SW	4	○	
3-41	LM 5 5 GC-0 7 1 3 Z R	Front frame stay	1	○	
3-42	LM 5 5 GD-0 7 1 4 Z R	Rear frame stay	1		
3-43	LM 6 5 GC-0 7 1 3 Z R	Front frame stay	1	○	
3-44	LM 6 5 GD-0 7 1 4 Z R	Rear frame stay	1		
3-45	K 0 0 8 0 1 0 0 4 0 3	10 bolt 40HW	6	○	
3-46	LM 5 5 GC-0 5 1 0 Z 3	Front stay pipe	1	○	
3-47	LM 6 5 GC-0 5 1 0 Z 3	Front stay pipe	1	○	
3-48	K 7 8 9 9 0 0 0 4 1 D	Stand	1		
3-49	K 1 0 9 0 0 0 0 0 2 9	Stand spring R	1	○	
3-50	K 4 0 3 1 0 0 0 2 5 0	10 staged rubber 224.5	1		
3-51	K 5 0 1 2 3 0 6 2 5 3	23SPCC washer 625	1	○	
3-52	K 0 0 0 6 0 6 0 1 5 2	6 bolt 15S	1	○	
3-53	K 0 3 2 0 0 4 0 2 2 1	4 spring pin 22	1	○	
3-54	K 6 1 0 0 0 0 0 0 6 9	Engine clutch shaft 363 65G			
3-55	K 0 0 0 7 0 8 0 2 5 2	8 bolt 25 SW	3	○	
3-56	LM 5 5 GC-0 7 4 8 Z R	L-shaped lever mounting bracket spacer	1	○	
3-57	K 0 4 0 2 0 4 0 0 0 1	Stop ring R40	1	○	
3-58	K 0 8 1 1 9 3 0 0 7 0	Oil seal MHS19307	1		
3-59	LM 5 5 GC-0 3 0 3 A R	Clutch shaft housing	1	○	
3-60	K 0 6 1 6 0 6 2 0 3 0	Bearing 62032NS EC3	1		
3-61	LM 6 5 GC-0 7 4 7 Z 3	Engine spacer (for ROBIN EY15D)	2		
3-62	K 0 0 7 1 0 0 1 0 3 2	10 special bolt 40	1		
3-63	K 0 0 4 4 0 6 0 1 5 2	6 + round head screw 15	8	○	
3-64	K 0 0 7 1 0 0 0 5 9 3	M10 knock bolt 40	4	○	
3-65	K 9 1 0 0 0 0 0 0 6 0	Clutch cover 265 Ass'y	1		

### 3. Engine clutch

LM55GD • LM55GDF  
LM65GD • LM65GDF LM65TD • LM65TDS

4. Frame/transmission-1

LM55GD • LM55GDF  
LM65GD • LM65GDF LM65TD • LM65TDS



Catalog No.	Code No.	Part Name	Qty /Unit	Common Part	Retail Price
4-1	LM55GC-0601ER	Left frame	1		
4-2	LM55GC-0606Z0	Large packing	1		
4-3	K1400000010	Oil tap 18	1		
4-4	K0870182640	Needle seal OS18264	2	○	
4-5	K0830000020	Oil seal 254210	2	○	
4-6	K0802030050	Oil seal MH20305	1	○	
4-7	LM55GB-0201A0	Second shaft	2	○	
4-8	K5051013280	1C5191P washer 1328	10		
4-9	K5020813280	0.8NBS55 washer 1328	5		
4-10	LM55GD-2601Z0	51-tooth gear	1		
4-11	K0701317120	Needle KT131712	2	○	
4-12	LM55GB-0210A3	Right 16-tooth differential gear	1	○	
4-13	K6202000140	Differential gear bearing	2	○	
4-14	K5051022300	1C5191P washer 2230	4		
4-15	K5020822300	0.8NBS55 washer 2230	3		
4-16	LM55GC-0102Z0	Reel intermediate shaft	1		
4-17	K0211120001	12 disc spring H	1	○	
4-18	LM55GD-2602Z0	44-tooth gear	1		
4-19	K0722210000	Needle TA2210Z	2	○	
4-20	K8000000030	50-tooth differential gear ass'y	1	○	
4-21	K0701013100	Needle KT101310	4	○	
4-22	K6150000150	10 differential pin 55	1	○	
4-23	K5051010220	1C5191P washer 1022	1		
4-24	LM55GB-0209C0	Left 16-tooth differential gear	1	○	
4-25	K0520504060	5 one-end round key 46.3	2	○	
4-26	LM55GB-0214A0	Left 18-tooth gear	1	○	
4-27	LM55GB-0218A0	Left frame 4-shaft	1	○	
4-28	LM55GD-2603Z0	46-tooth 14-tooth gear	2		
4-29	K0711317200	Needle KTW131720	2	○	
4-30	LM55GC-0225Z8	Transmission shaft	1		
4-31	LM65GC-0225Z8	Transmission shaft	1		
4-32	K7001000020	50-tooth differential gear	1	○	
4-33	K6191000040	Differential pinion gear 12	4	○	
4-34	K6211000180	7SGP collar 10.57	2	○	
4-35	K6033000060	Differential pin 7.5	2	○	

○: Parts common to LM55GC

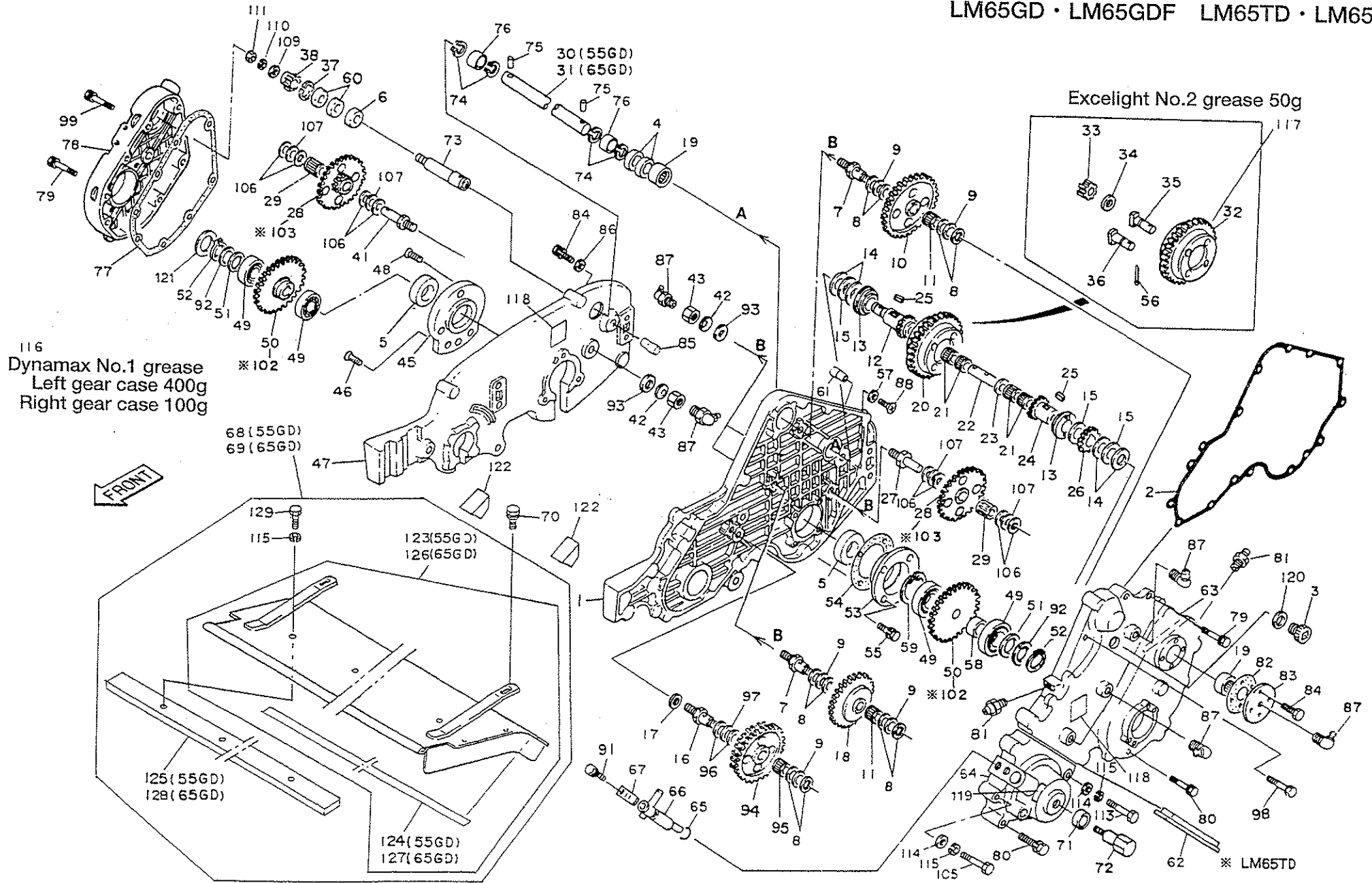
Catalog No.	Code No.	Part Name	Qty /Unit	Common Part	Retail Price
4-36	K6033000070	Differential pin 15	2	○	
4-37	K4020350001	Stop ring R35	1	○	
4-38	K6188000010	Threaded 18-tooth gear M2	1		
4-39					
4-40					
4-41	LM55GB-0228A0	Right gear intermediate shaft	1	○	
4-42	K0211100001	10 disc spring H	4	○	
4-43	K0160000282	10 nut 3P10H1	4	○	
4-44					
4-45	LM55GB-0229B0	Right drum housing	1	○	
4-46	K0041060202	6 + countersunk head screw 20	2	○	
4-47	LM55GC-0602FR	Right frame	1	○	
4-48	K0041080202	8 + countersunk head screw 20	3	○	
4-49	K0601062040	Bearing 6204C3	4	○	
4-50	LM55GD-2604Z0	48-tooth axle gear	2		
4-51	K5011020282	1SPCC washer 2028	4	○	
4-52	K0401020001	Stop ring S20	2	○	
4-53	LM55GB-0222Z0	Left drum axle housing	1	○	
4-54	LM55GB-0223A0	Left drum axle housing packing	1	○	
4-55	K0007080252	8 bolt 25 SW	4	○	
4-56	K0300025162	2.5 cotter pin 16	4	○	
4-57	LM55GB-0614Z3	Handle pin washer	1	○	
4-58	LM55GB-0234A0	Left collar	1	○	
4-59	K0402047001	Stop ring R47	2	○	
4-60	K0616062020	Bearing 6202NSEC3	2	○	
4-61	K6155000152	Handle mounting pin L	1	○	
4-62	LM55GC-0608Z0	Joint packing	1	○	
4-63	LM55GC-0603ZR	Large cover	1	○	
4-64	LM55GD-0604ZR	Small cover	1	○	
4-65	K0880015000	O-ring P15	1	○	
4-66	K7321000093	Clutch handle	1	○	
4-67	K1090000058	Clutch retainer spring	1	○	
4-68	LM55GD-2708Z0	Reel cover Assy 55	1		
4-69	LM65GD-2708Z0	Reel cover Assy 65	1	○	
4-70	K0007080152	8 bolt 15 SW	2		

#### 4. Frame/transmission-1

LM55GD • LM55GDF  
LM65GD • LM65GDF LM65TD • LM65TDS

4. Frame/transmission-2

LM55GD • LM55GDF  
LM65GD • LM65GDF LM65TD • LM65TDS



Catalog No.	Code No.	Part Name	Qty /Unit	Common Part	Retail Price
4-71	K 0 8 2 1 2 2 8 0 7 0	Oil seal MHS12287	1	○	
4-72	K 0 0 7 1 0 0 0 8 7 8	10 special bolt 35	1		
4-73	K 6 1 2 2 0 0 0 1 8 8	Right transmission shaft	1		
4-74	K 0 4 0 3 0 1 8 0 0 1	Round stop ring S18	3	○	
4-75	K 0 3 1 1 0 4 0 1 7 0	4 needle roller 17.8	2	○	
4-76	L M 5 5 G B - 0 2 2 4 Z 2	Differential extension shaft collar	2	○	
4-77	L M 5 5 G B - 0 6 0 7 A 0	Right case packing	1	○	
4-78	L M 5 5 G D - 0 6 0 5 Z R	Right gear cover	1	○	
4-79	K 0 0 0 7 0 6 0 5 0 2	6 bolt 50 SW	13	○	
4-80	K 0 0 0 7 0 6 0 6 0 2	6 bolt 60 SW	6	○	
4-81	K 1 4 4 0 0 0 0 0 1 2	Grease nipple	2	○	
4-82	L M 5 5 G B - 0 2 0 8 Z 0	3-shaft packing	2	○	
4-83	L M 5 5 G B - 0 2 1 7 Z 0	Bearing retainer	1	○	
4-84	K 0 0 0 7 0 6 0 1 5 2	6 bolt 15 SW	6	○	
4-85	K 6 1 5 5 0 0 0 0 4 2	Handle mounting pin R	1	○	
4-86	K 5 0 1 2 3 0 6 2 0 2	2.3SPCC washer 620	1	○	
4-87	K 1 4 4 0 0 0 0 0 2 2	C-shaped grease nipple	6	○	
4-88	K 0 0 4 1 0 6 0 1 2 2	6 + countersunk head screw 12	1	○	
4-89					
4-90					
4-91	K 0 0 2 7 0 6 0 1 2 2	6 + hole upset bolt 12 S	1	○	
4-92	K 5 0 1 0 3 2 0 2 8 3	0.3SPCC washer 2028	4	○	
4-93	K 5 0 0 0 1 0 0 0 0 2	10 washer	4	○	
4-94	L M 5 5 G D - 2 5 0 2 Z 0	44-tooth 50-tooth gear	1		
4-95	K 0 7 0 1 5 1 9 1 8 0	Needle KT151918	1	○	
4-96	K 5 0 5 1 0 1 5 2 8 0	1C5191P washer 1528	2	○	
4-97	K 5 0 2 0 8 1 5 2 8 0	0.8NBS55 washer 1528	1	○	
4-98	K 0 0 0 7 0 6 0 3 0 2	6 bolt 30 SW	1	○	
4-99	K 0 0 0 7 0 6 0 7 0 2	6 bolt 70 SW	1	○	
4-100					
4-101					
※4-102	L M 5 5 T B - 0 2 2 1 C 0	47-tooth axle gear	2		
※4-103	L M 5 5 T B - 0 2 1 9 C 0	46-tooth 15-tooth gear	2		
4-104					
4-105	K 0 0 0 3 0 6 0 6 0 2	6 bolt 60	1		

○: Parts common to LM55GC ※: LM65TD

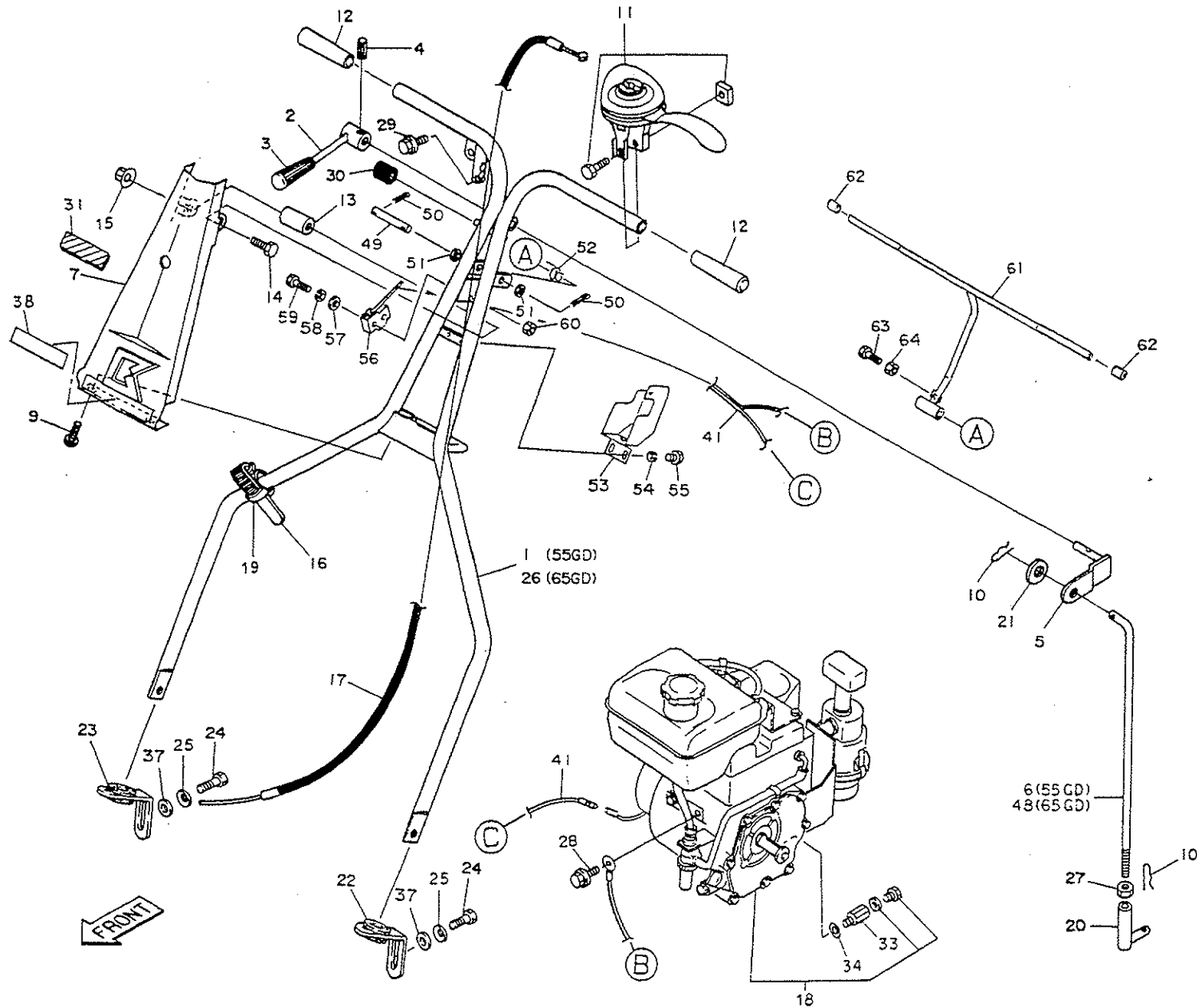
Catalog No.	Code No.	Part Name	Qty /Unit	Common Part	Retail Price
4-106	K 5 0 5 1 0 1 3 2 2 0	1C5191P washer 1322	8	○	
4-107	K 5 0 2 0 8 1 3 2 2 0	0.8NBS washer 1322	4	○	
4-108	K 5 0 1 0 3 4 0 4 6 2	0.3SPCC washer 4046.5	3	○	
4-109	K 5 0 0 0 1 4 0 0 0 2	14 washer	1		
4-110	K 0 2 1 0 1 4 0 0 0 1	14 disc spring L	1		
4-111	K 0 1 8 3 1 4 0 0 0 2	14 left-hand threaded nut P1.5	1		
4-112					
4-113	K 0 0 0 3 0 6 0 5 0 2	6 bolt 50	1		
4-114	K 5 0 0 0 0 6 0 0 0 2	6 washer	2		
4-115	K 0 2 0 0 0 6 0 0 0 2	6S washer	5		
4-116	K 2 9 2 9 0 0 0 0 0 0	Dynamax EP No. 1 grease	500g	○	
4-117	K 2 9 3 1 0 0 0 0 0 0	Excelite EP No. 2 grease	50g	○	
4-118	K 4 2 0 9 0 0 0 3 7 0	Lubrication 10 hour mark	2		
4-119	K 4 2 0 3 0 0 0 0 8 0	ON OFF mark	1	○	
4-120	K 4 0 1 0 2 1 7 2 5 0	2 oil seat 17.525	1	○	
4-121	K 5 0 1 0 3 4 0 4 6 2	0.3SPCC washer 4046.5	1	○	
4-122	K 4 0 3 9 0 0 0 0 7 0	Reel cover rubber A	2	○	
4-123	L M 5 5 G D - 2 7 0 9 Z 0	Reel cover COMP 55	1		
4-124	K 4 0 3 3 0 0 0 3 6 0	2 rubber sheet 9584	1		
4-125	L M 5 5 G D - 1 0 0 3 Z 2	Rectification plate 55	1		
4-126	L M 6 5 G D - 2 7 0 9 Z 0	Reel cover COMP 65	1		
4-127	K 4 0 3 3 0 0 0 3 7 0	2 rubber sheet 9674	1		
4-128	L M 6 5 G D - 1 0 0 3 Z 2	Rectification plate 65	1		
4-129	K 0 0 0 0 0 6 0 1 0 2	6 bolt 10	3		

#### 4. Frame/transmission-2

LM55GD • LM55GDF  
LM65GD • LM65GDF LM65TD • LM65TDS

## 5. Handle/engine

LM55GD • LM55GDF  
 LM65GD • LM65GDF LM65TD • LM65TDS



Catalog No.	Code No.	Part Name	Qty /Unit	Common Part	Retail Price
5-1	K 7 1 0 0 0 0 2 0 L	Handle 54E	1		
5-2	K 8 0 6 0 0 0 0 1 0	Traveling clutch lever	1	○	
5-3	K 1 3 0 0 0 0 0 7 0	9 black grip 22	1	○	
5-4	K 0 3 2 0 0 5 0 2 0 1	5 spring pin 20	1	○	
5-5	K 7 3 2 1 0 0 0 0 3 3	Clutch lever shaft	1	○	
5-6	K 7 3 0 1 0 0 0 0 5 3	Clutch rod	1		
5-7	K 9 0 0 0 0 0 0 1 0 0	Handle cover COMP	1	○	
5-8					
5-9	K 0 0 4 8 0 4 0 1 0 2	4 + round head screw 10S	2	○	
5-10	K 0 3 4 0 8 0 0 0 0 2	8 locking snap pin	2	○	
5-11	K 1 2 0 3 5 2 1 0 0 0	Throttle lever E352100	1	○	
5-12	K 1 3 0 0 0 0 0 2 2 0	Black handle grip 20.5	2	○	
5-13	K 6 2 1 1 0 0 0 0 3 3	6.5SGP collar 10.516	1	○	
5-14	K 0 0 4 2 0 5 0 2 5 2	5 round head screw 25	1	○	
5-15	K 0 1 4 3 0 5 0 0 0 8	5 nut with disc spring	1	○	
5-16	K 4 1 4 1 0 0 0 0 1 0	Nylon band 140	3	○	
5-17	K 1 1 1 0 1 3 5 0 0 0	Throttle wire 1350	1		
5-18	K 2 6 2 0 0 0 0 1 8 0	Robin EY15D	1		
5-19	K 4 2 4 1 0 0 0 0 7 0	Urethane tube 7	1	○	
5-20	K 7 3 0 9 0 0 0 0 1 2	Rod adjuster	1	○	
5-21	K 5 0 0 0 0 8 0 0 0 2	8 washer	1		
5-22	LM55GB—0715E0	Left handle adjuster	1	○	
5-23	LM55GB—0716E0	Right handle adjuster	1	○	
5-24	K 0 0 1 0 1 0 0 2 5 1	10 heat treated bolt 25	2	○	
5-25	K 0 2 1 3 1 0 0 0 0 1	10 disc spring washer 1H	2	○	
5-26	K 7 1 0 0 0 0 0 2 6 L	Handle 64E	1		
5-27	K 0 1 0 2 0 8 0 0 0 2	8 nut 3	2	○	
5-28	K 0 0 0 6 0 8 0 1 5 2	8 bolt 15S	1		
5-29	K 0 0 0 6 0 5 0 2 0 2	5 bolt 20S	1	○	
5-30	K 4 0 3 1 0 0 0 1 0 0	Stopper rubber	1	○	
5-31	K 4 0 3 3 0 0 0 0 7 0	Handle cover rubber cushion	1	○	
5-32					
5-33	K 0 0 7 1 0 0 0 9 0 2	Threaded pipe of waste oil	1	○	
5-34	⊙021-11400-20	Gasket	1	○	
5-35					

○: Parts common to LM55GC

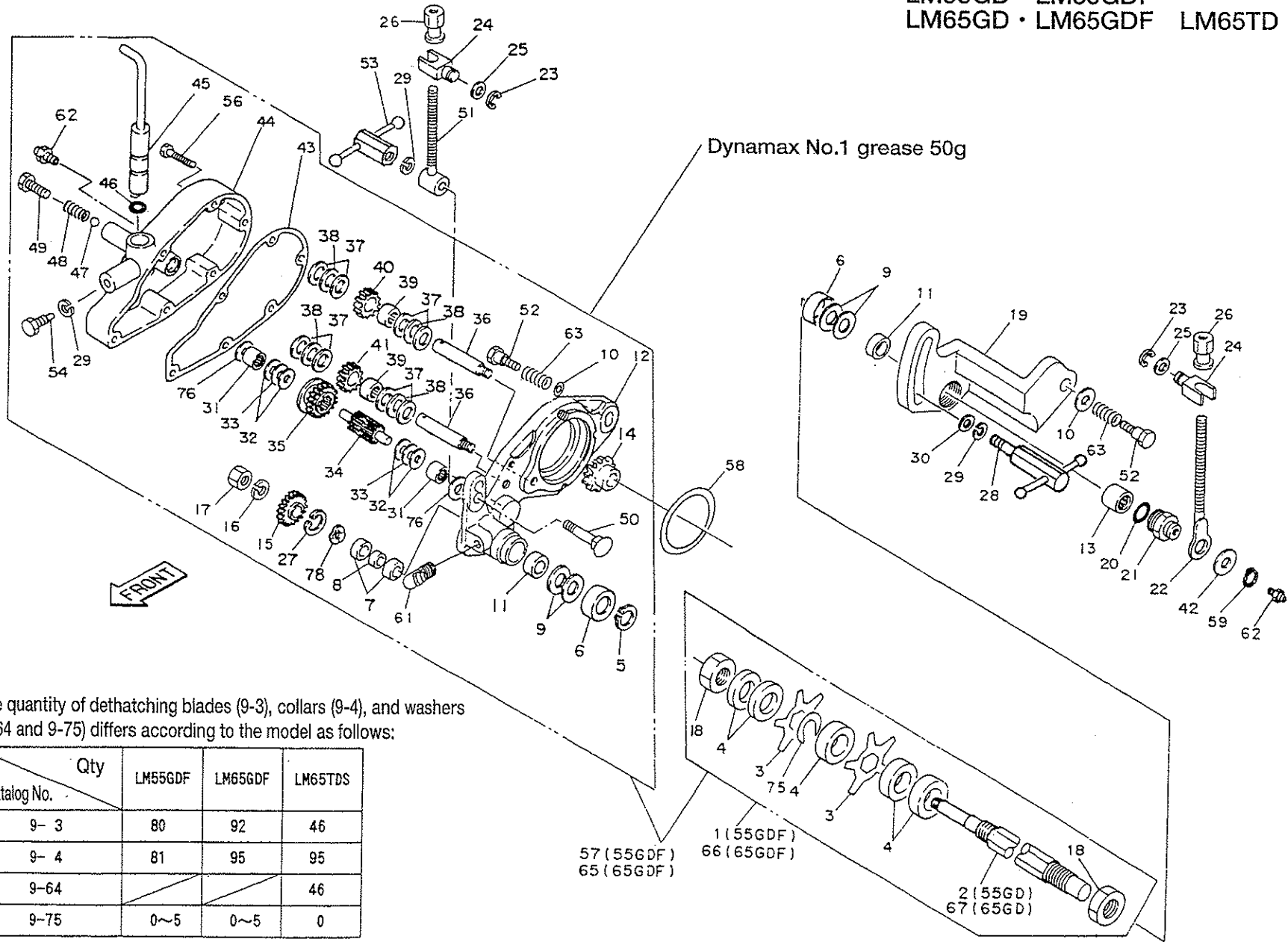
Catalog No.	Code No.	Part Name	Qty /Unit	Common Part	Retail Price
5-36					
5-37	K 5 0 1 2 3 1 0 2 5 3	2.3SPCC washer 1025	2	○	
5-38	K 4 2 0 1 0 0 0 1 2 0	Baroness mark 121	1		
5-39					
5-40					
5-41	K 3 6 2 0 0 0 0 5 1 0	Engine switch cord 1330	1		
5-42					
5-43					
5-44					
5-45					
5-46					
5-47					
5-48	K 7 3 0 1 0 0 0 0 6 3	Clutch rod	1		
5-49	K 6 1 5 1 0 0 0 1 1 2	10 shaft 72 with two holes	1		
5-50	K 0 3 0 0 0 2 5 1 6 2	2.5 cotter pin16	2		
5-51	K 5 0 0 0 1 0 0 0 0 2	10 washer	2		
5-52	K 1 0 5 0 0 0 0 1 5 8	2.3 twisted coil spring 25.6	1		
5-53	K 7 1 6 3 0 0 0 2 8 L	Switch cover	1		
5-54	K 0 2 0 0 0 6 0 0 0 2	6S washer	2		
5-55	K 0 0 0 0 0 6 0 1 0 2	6 bolt 10	2		
5-56	K 3 6 7 0 0 0 0 0 8 0	Switch AM1711 hinge	1		
5-57	K 5 0 0 0 0 4 0 0 0 2	4 washer	2		
5-58	K 0 2 0 0 0 4 0 0 0 2	4S washer	2		
5-59	K 0 0 0 0 0 4 0 3 0 2	4 bolt 30	2		
5-60	K 0 1 0 0 0 4 0 0 0 2	4 nut	2		
5-61	K 7 4 2 2 0 0 0 1 0 L	Engine lever	1		
5-62	K 1 3 1 0 0 0 0 1 0 0	10.5 black cap	2		
5-63	K 0 0 0 0 0 6 0 2 5 2	6 bolt 25	1		
5-64	K 0 1 0 0 0 6 0 0 0 2	6 nut	1		

## 5. Handle/engine

LM55GD • LM55GDF  
LM65GD • LM65GDF LM65TD • LM65TDS

9. Groomer

LM55GD • LM55GDF  
LM65GD • LM65GDF LM65TD • LM65TDS



The quantity of dethatching blades (9-3), collars (9-4), and washers (9-64 and 9-75) differs according to the model as follows:

Catalog No.	Qty	LM55GDF	LM65GDF	LM65TDS
9-3		80	92	46
9-4		81	95	95
9-64				46
9-75		0~5	0~5	0



Catalog No.	Code No.	Part Name	Qty /Unit	Common Part	Retail Price
9-1	LM55GCF1208A0	Vertical blades shaft ass'y	1		
9-2	LM55GCS1204A8	Vertical blades shaft (660)	1	○	
9-3	K2570000019	Dethatching blade	※80	○	
9-4	LM55GBS1203B0	Collar	81	○	
9-5	K0401015001	Stop ring S15	1	○	
9-6	K5300000293	Dust cover	2	○	
9-7	K0611069010	Bearing 6901RDC3	2	○	
9-8	K6212001590	12.1STKM collar 1714	1	○	
9-9	K5051015280	1C5191P washer 1528	4	○	
9-10	K5090000250	2C5191P washer 8.522	2	○	
9-11	K0821522070	Oil seal MHSA15227	2	○	
9-12	LM55GCS1225BR	Vertical gear case	1	○	
9-13	K0721520000	Needle TA1520Z	1	○	
9-14	LM55GDF1206Z0	23-tooth reel gear with M16 left-hand screw	1		
9-15	K6180000130	15-tooth gear for locking	1	○	
9-16	K0200100002	10 S washer	1	○	
9-17	K0160000322	10 left-hand screw nut P1	1	○	
9-18	K0160000302	17 special nut P1	2	○	
9-19	LM55TBS1207ER	Left vertical housing	1	○	
9-20	K0880018000	O-ring P18	1	○	
9-21	LM55GBS1231A0	Screw	1	○	
9-22	LM55TBS1229A3	Adjusting screw	1	○	
9-23	K0400010002	Stop ring E10	2		
9-24	K6090000502	Adjusting receiver	2		
9-25	K5011013222	1SPCC washer 1322	2		
9-26	K6084000063	Roller adjuster	2	○	
9-27	K0402024001	Stop ring R24	1	○	
9-28	K1330000060	Bolt with handle P1.25	1	○	
9-29	K0200080002	8S washer	4	○	
9-30	K5000080002	8 washer	1	○	
9-31	K0720810000	Needle TA810Z	2	○	
9-32	K5051008180	1C5191P washer 818	4	○	
9-33	K5020808180	0.8NBS55 washer 818	2	○	
9-34	K6100000080	Vertical blades 2-shaft	1	○	
9-35	K6180000120	Clutch 18-tooth gear	1	○	

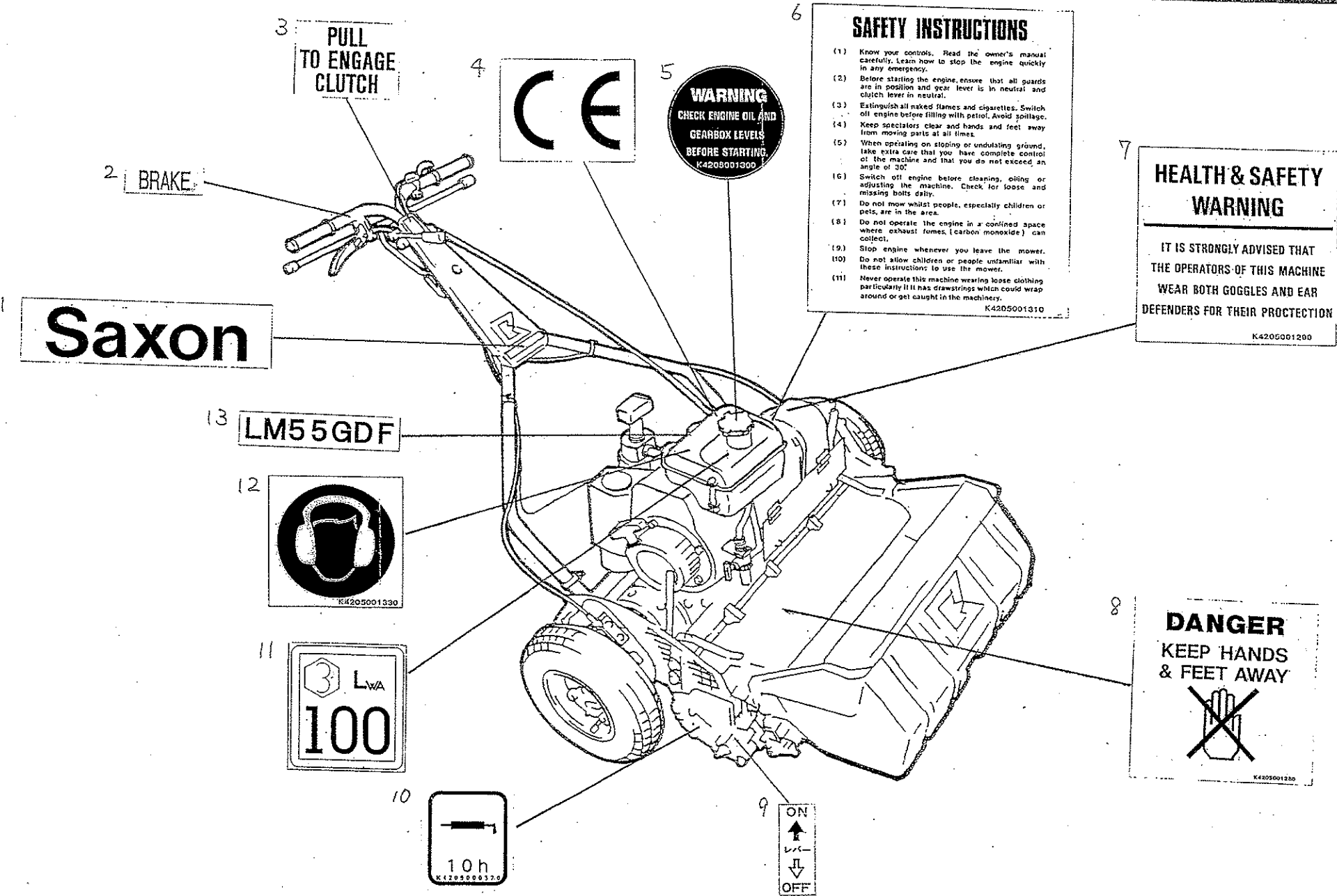
○: Parts common to LM55GC

Catalog No.	Code No.	Part Name	Qty /Unit	Common Part	Retail Price
9-36	K6120000310	Intermediate shaft	2	○	
9-37	K5051010160	1C5191P washer 1016	8	○	
9-38	K5020810160	0.8NBS55 washer 1016	4	○	
9-39	K0701013100	Needle KT101310	2	○	
9-40	LM55GCS1213Z0	18-tooth gear A	1	○	
9-41	LM55GCS1214Z0	18-tooth gear B	1		
9-42	K5051013220	1C5191P washer 1322	1	○	
9-43	LM55TBS1224Z0	Packing	1	○	
9-44	LM55GCS1237Z0	Gear case cover	1	○	
9-45	K7899000669	Lever	1	○	
9-46	K0880011000	O-ring P11	1	○	
9-47	K1500635000	6.35 steel ball	1	○	
9-48	K1000000090	1 compression spring 618	1	○	
9-49	K0007080152	8 bolt 15SW	1	○	
9-50	K0025080552	8 square-based round-head bolt 55	1	○	
9-51	LM55GBS1220B3	Vertical adjusting bolt	1	○	
9-52	LM55GBS1230C3	Right case locking bolt	2	○	
9-53	K1330000050	Screw with handle P1.25	1	○	
9-54	K0071000953	Stop bolt	1	○	
9-55	LM55GCF1304A0	55 brush shaft ass'y	1	○	
9-56	K0007060402	6 bolt 40 SW	6	○	
9-57	K8001000090	55GDF vertical gear case with blades	1	○	
9-58	K0882045000	O-ring G45	1	○	
9-59	K0401013001	Stop ring S13	1	○	
9-60				○	
9-61	K1440000022	C-shaped grease nipple	1	○	
9-62	K1440000012	Grease nipple	4	○	
9-63	K10000000309	1.6 compression spring 13.720	2	○	
9-64	K5090000653	0.5SPCC washer 19.732	39	○	
9-65	K8001000100	65GCD vertical gear case with blades	1	○	
9-66	LM65GCF1208Z0	Vertical blades shaft ass'y	1	○	
9-67	LM65GCS1204A8	Vertical blades shaft (750)	1	○	
9-68					
9-69	LM65GCF1304A0	65 brush shaft ass'y	1	○	
9-70					

## 9. Groomer

LM55GD • LM55GDF  
LM65GD • LM65GDF LM65TD • LM65TDS

# Location of labels



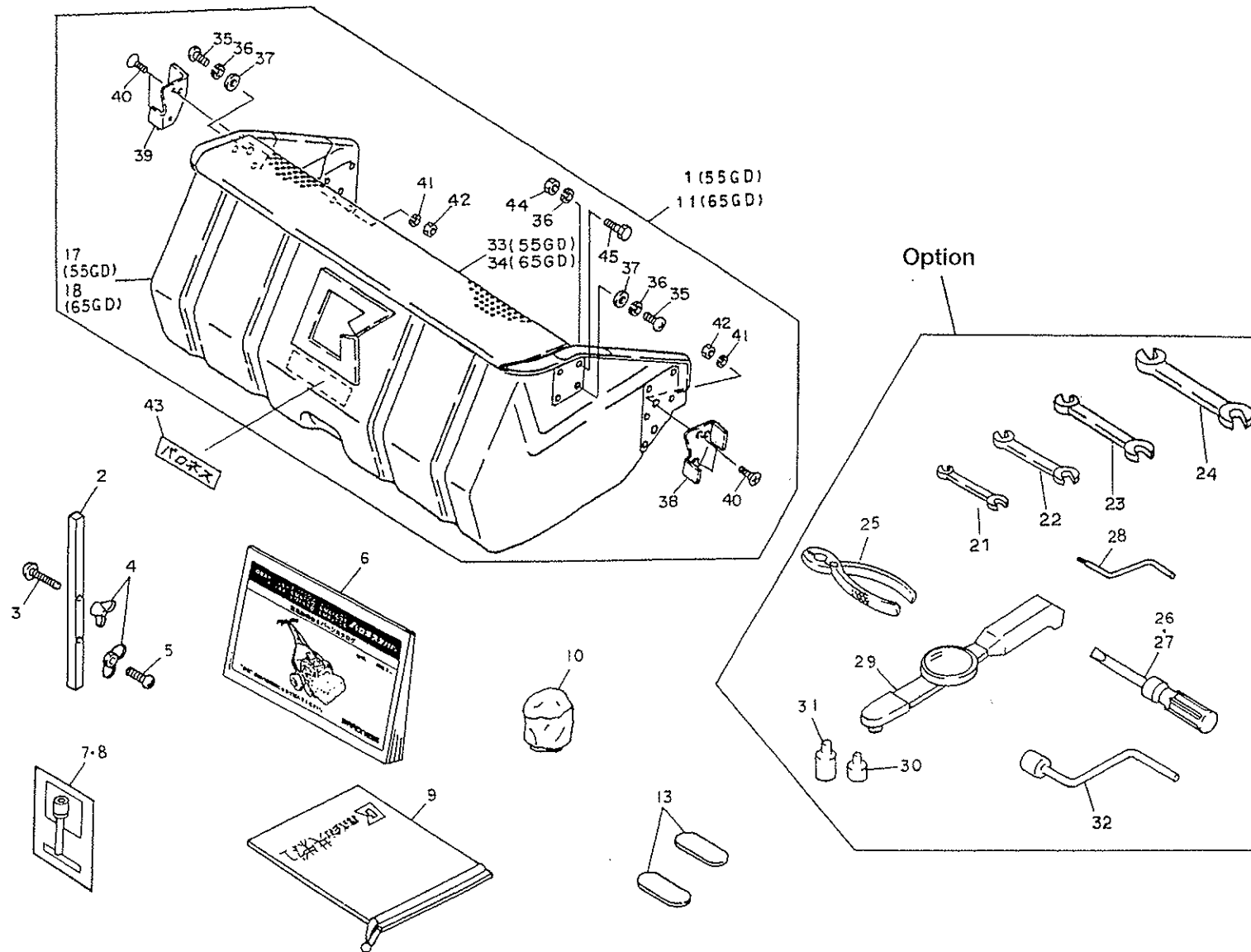
DECAL CODE NUMBER FOR LM55GDF SAXON 2001 HC MODEL

	Code No.	Name	Qty/Unit
1	K4201000420	SAXON Mark	1
2	K4203000970	BRAKE Mark	1
3	K4203000960	Clutch Engagement Mark	1
4	K4209000640	CE Mark	1
5	K4205001300	Engine Oil Warning Mark	1
6	K4205001310	SAFETY INSTRUCTIONS Mark	1
7	K4205001290	HEALTH & SAFETY WARNING Mark	1
8	K4205001280	DANGER Mark	1
9	K4203000080	On/Off Mark	2
10	K4209000370	Grease Up 10h Mark	3
11	K4209000670	LWA 100 Mark	1
12	K4205001330	Noise Warning Mark	1
13	LM55GDF2101Z0	Model Name Mark	1



## 7. Grass catcher/tools

LM55GD • LM55GDF  
LM65GD • LM65GDF LM65TD • LM65TDS  
Saxon 2001 HC Model







Catalog No.	Code No.	Part Name	Qty /Unit	Common Part	Retail Price
7-1	LM55GD-1301Z0	Grass catcher	1		
7-2	K6090000072	Mowing height gauge 3	1	○	
7-3	K0046060502	6 + tapping screw C-1 round head 50	1	○	
7-4	K0141060002	6 butterfly nut 3	2	○	
7-5	K0046060302	6 + tapping screw C-1 round head 30	1	○	
7-6	LM55GD-00JE00	LM55GD handling manual and parts catalog	1		
7-7	K2620EY15D-10	EY15D tool	1		
7-8	K2620EY15D-03	EY150D operation manual	1	○	
7-9	K4801000020	Tool bag	1	○	
7-10	K4110000060	Cleaner cover A	1	○	
7-11	LM65GD-1301Z0	Grass catcher	1		
7-12					
7-13	K4802000120	0.5 thickness gauge	2	○	
7-14					
7-15					
7-16					
7-17	LM55GD-1302Z0	Small grass catcher	1		
7-18	LM65GD-1302Z0	Large grass catcher	1		
7-19		Option tool			
7-21	K4810080102	Spanner 8 x 10	1		
7-22	K4810130172	Spanner 13 x 17	2		
7-23	K4810190222	Spanner 19 x 22	1		
7-24	K4810240272	Spanner 24 x 27	1		
7-25	K4830000012	Pliers	1		
7-26	K4820000010	+/- screwdriver	1		
7-27	K4820000020	- screwdriver through 200	1		
7-28	K6125000052	Reel lapping handle	1		
7-29	K4802000370	Torque wrench 6-60	1		
7-30	K4802000354	socket adapter 6.35 x 9.5	1		
7-31	K4802000364	socket adapter 9.5 x 12.7	1		
7-32	K4802000382	Lapping handle	1		
7-33	LM55GD-1306ZD	Cover	1		
7-34	LM65GD-1306ZD	Cover	1		
7-35	K0042080202	8 + round head screw 20	2		

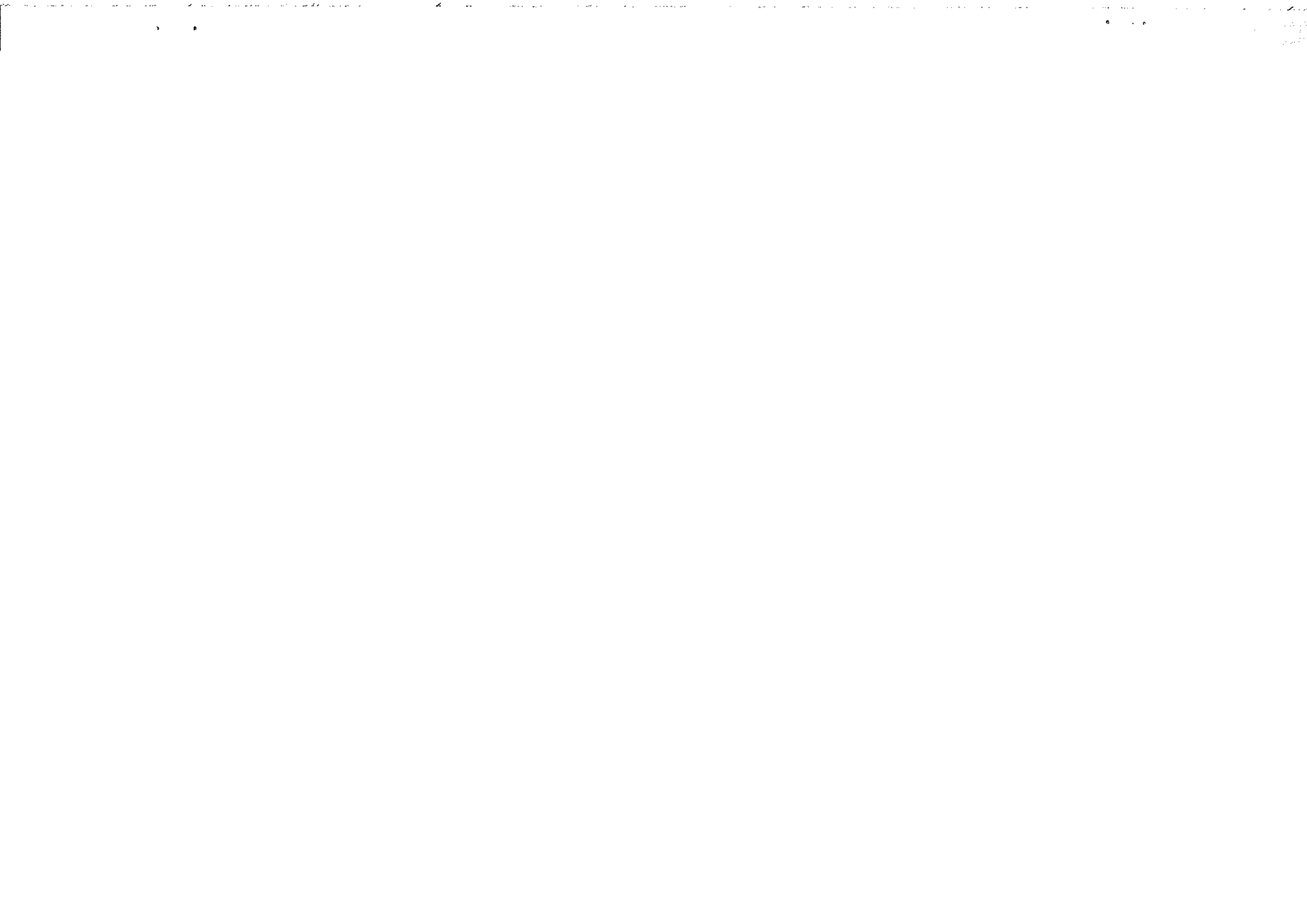
○: Parts common to LM55GC


Catalog No.	Code No.	Part Name	Qty /Unit	Common Part	Retail Price
7-36	K0200080002	8S washer	4		
7-37	K5000080002	8 washer	2		
7-38	K5276000013	Left latch	1		
7-39	K5276000023	Right latch	1		
7-40	K0041060202	6 + countersunk head screw 20	4		
7-41	K0200060002	6S washer	4		
7-42	K0100060002	6 nut	4		
7-43	K4200000040	Baroness name	1		
7-44	K0100080002	8 nut	2		
7-45	K0000080152	8 bolt 15	2		

**7. Grass catcher/tools** Items 7-21 through 7-31 are optional tools (and are not included with the mower).

LM55GD • LM55GDF  
LM65GD • LM65GDF LM65TD • LM65TDS





 **KYOEISHA CO., LTD.**  
Turt Care Machinery  
Tel : (0533) 84-1221  
Fax: (0533) 84-1220

Head Office  
1-26, Miyuki-cho, Toyokawa,  
Aichi-Pref. 442-8530 Japan.