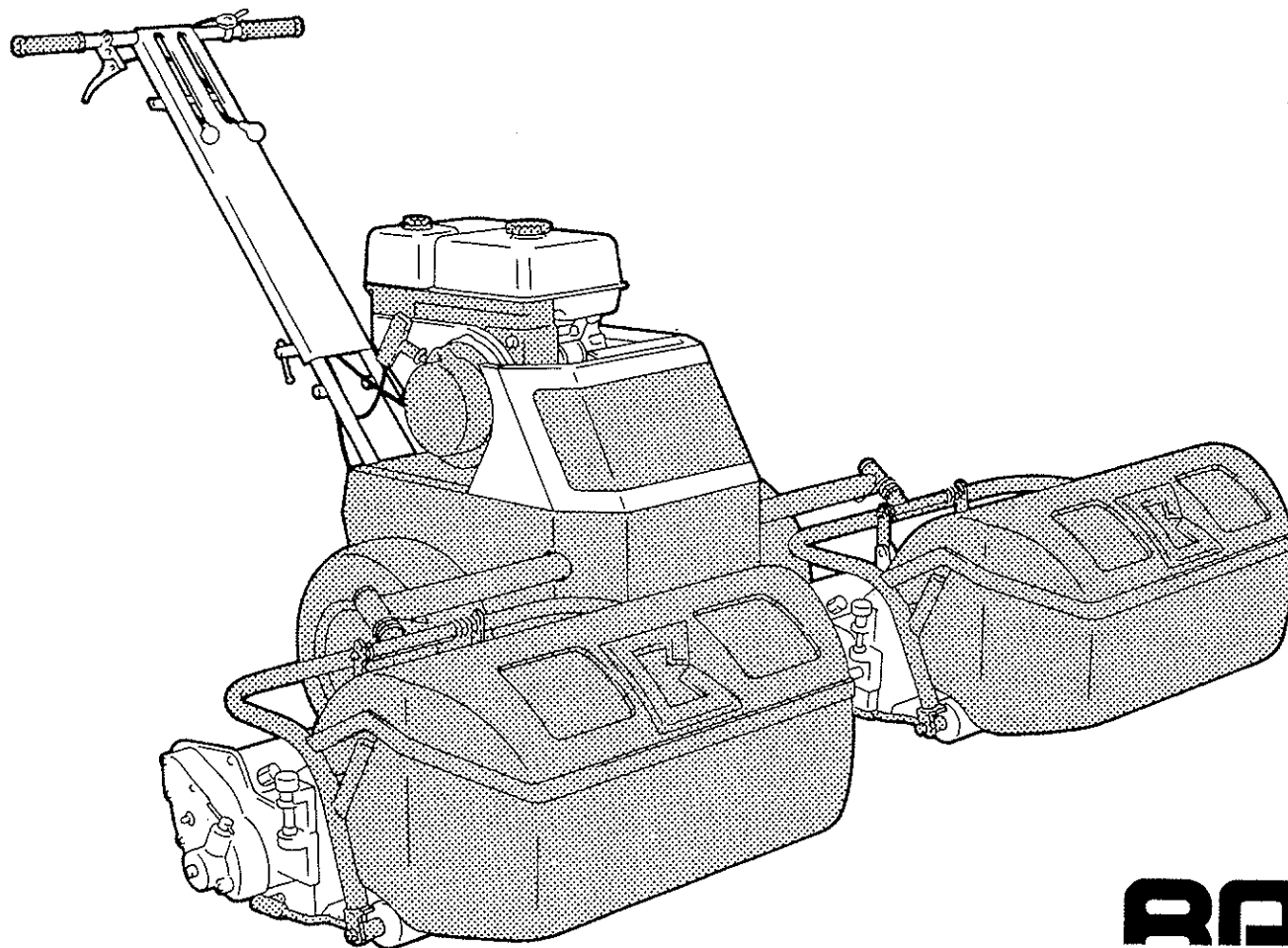


TWIN GREEN MOWER

LM210G

BARONESS LAWN MOWER

Owner's Operation Manual and Parts Catalog



BARONESS

CONTENTS

Contents	1
Notes	1
Introduction	2
Owner's Operation Manual	
1. Specifications	3
2. Safety Precautions	4
3. Names of Components	4
4. Operating Procedure	4
4-1. Starting the Engine	4
4-2. Stopping the Engine	4
4-3. Travel	5
4-4. Mowing	5
5. Riding Unit	6
5-1. Attachment Procedure	6
6. Preliminary Inspection	6
6-1. Main Unit	6
6-2. Mower Units	6
7. Main Unit Adjustment Procedures	6
7-1. Handle Height	6
7-2. Brake	7
7-3. Travel and Reel Belts	7
8. Adjustment of Mower Units	7
8-1. Names of Components	7
8-2. Removal and Installation of Mower Units	7
8-3. Mowing Height	8
8-4. Lapping	8
8-5. Blade Engagement	9
8-6. Blade Alignment	9
8-7. Cylindrical Grinding of Blade Reel Cylinder	9

8-8. Installation of Blade Reel Cylinder	9
9. Lubrication	10
10. Engine Regular Inspection	10
11. Long-Term Storage	10

Parts Catalog

Ordering Parts	12
1. Mower Unit	13 • 14 • 15 • 16
2. Mower Attachment Unit	17 • 18
3. Frame/Transmission Unit A	19 • 20
4. Frame/Transmission Unit B	21 • 22
5. Engine/Tension Unit	23 • 24
6. Transmission	25 • 26
7. Wheels	27 • 28
8. Handle	29 • 30
9. Cover	31 • 32
10. Tools	33 • 34
11. Riding Unit	35 • 36

NOTES

● Since the name of the lawn mower may be different, when making inquiries regarding the lawn mower currently being used, please inform us of the machine number.

● The contents of this manual are subject to change without notice.

Introduction

Thank you for your purchase of the BARONESS TWIN GREEN MOWER LM210G. Please read this owner's operation manual, engine operation manual and lapping machine instruction manual carefully before using this product. The user is also requested to properly handle and store the product based on a complete understanding of its performance to ensure that it is used safely and efficiently.

Twin Green Mower
LM210G

BARONESS LAWN MOWER

Owner's Operation Manual

1. Specifications

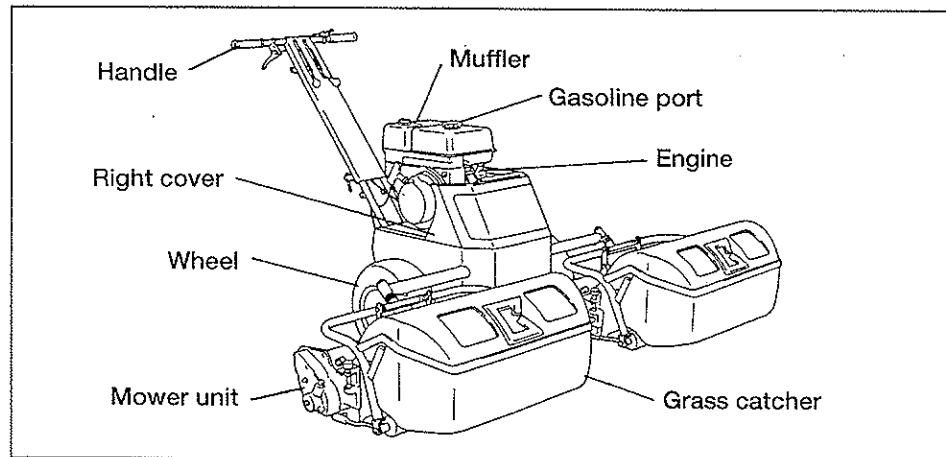
Model		LM210G	
Length		1770 mm	
Width		1705 mm	
Height		1015 mm	
Weight	Total weight	155 kg	
	Mower weight	24 kg (per unit)	
Traveling Unit	Transmission		
	All-gear (built-in differential)		
	2 speeds forward, 1 speed reverse		
	Speed	Working speed	4.4 km/h (engine speed: 3,000 rpm)
		Moving speed	7.1 km/h (engine speed: 3,000 rpm)
	Wheels		C190-13 x 6.50-6
Brake		Internal expanding brake	
Clutch		Belt tension type	
Engine		Mitsubishi GM181L (max. output: 6 PS)	

Mower Unit	Reel diameter	102 mm
	Reel width	557 mm
	No. of blades	9
	Clutch	Belt tension type

2. Safety Precautions

- (1) Since both the blade reel cylinder and bottom blade are sharp, use sufficient caution when handling.
- (2) Never place hands or feet near the mower unit when the blade reel cylinder is turning.
- (3) When descending a slope, always make the mower travel slowly with the clutch engaged. Disengaging the clutch will release the engine brake.
- (4) Only add gasoline after stopping the engine and be careful not to add gasoline beyond the prescribed amount. Adding an excessive amount of gasoline results in the risk of fire when the muffler is hot.
- (5) Do not touch the muffler with your hands or other parts of the body when the engine is running since the muffler becomes hot.
- (6) Since exhaust fumes are toxic, never run the mower indoors in a sealed room.

3. Names of Components



4. Operating Procedure

4-1. Starting the Engine

- (1) Check that the traveling clutch lever and reel clutch lever are both in the OFF positions.
- (2) Open the fuel valve.
- (3) Close the choke lever (the choke is to be fully closed during cold weather or when the engine is cold, or fully or partially open during hot weather, and when restarting immediately after stopping).
- (4) Move the throttle lever from low speed position to about 1/3 open in the high speed direction.
- (5) When the starting knob is pulled out slowly, it will begin to feel heavy at a certain point. When pulled out a little further, it reaches a point where operation temporarily becomes lighter. From that point, return the starting knob all the way to its original position and then pull it out firmly.
- (6) Once the engine has started, gradually open the choke lever while monitoring how the engine runs.
- (7) After the engine has started, allow it to run for 1-2 minutes in the low speed position without applying a load.
- (8) Gradually move the throttle lever towards the high speed position and set it at the required engine speed.

CAUTION

Do not touch the V-belt, pulley or any rotating parts while the engine is running.

4-2. Stopping the Engine

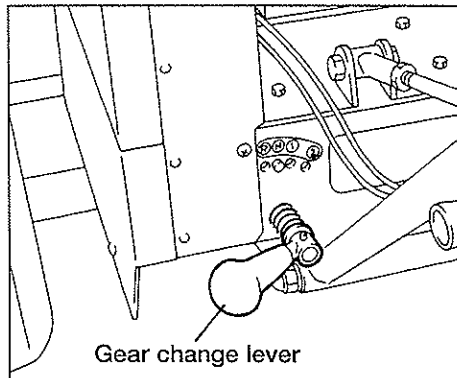
- (1) Move the throttle lever to the low speed position and allow the engine to run at that position for 1-2 minutes.
- (2) Press the stop button until the engine stops.
- (3) Close the fuel valve.
- (4) Slowly pull the starter knob of the recoil starter and return it at the point it begins to feel heavy. (This prevents entry of outside air into the engine.)

4-3.Travel

(1) Gear Change Lever

The gear change lever is located at the base of the handle on the left side. It can be set to the "R", "N", "1" and "2" positions in that order moving from left to right. When changing gears, select the required gear position after checking that the traveling clutch lever is in the OFF position.

"R": Reverse "N": Neutral
 "1": Working speed "2": Moving speed



(2) Traveling Clutch Lever

The traveling clutch lever is located on the right side of the handle center. Pulling the lever towards you causes the mower to move forward or backward, while pushing the lever forward causes the mower to stop. Since sudden operation of the traveling clutch lever can cause the mower to move suddenly, always make sure to operate this lever slowly.

(3) Brake Lever

The brake lever is located on the right side of the handle, and the brake is activated by squeezing down on the lever. (The brake can also be locked enabling it to be used as a parking brake by pressing the lock button at the base of the lever while the lever is squeezed.)

CAUTION

Check that the traveling clutch lever is in the OFF position at this time.

4-4.Mowing

(1) Reel Clutch Lever

The reel clutch lever is located on the left side of the center of the handle. The reel turns when this lever is pulled towards you, and stops when returned by pushing forward.

CAUTION

Only allow the reel to turn immediately prior to cutting work. Do not allow the reel to turn when not performing cutting work since that can cause seizure of the blades.

(2) Clutch Handles

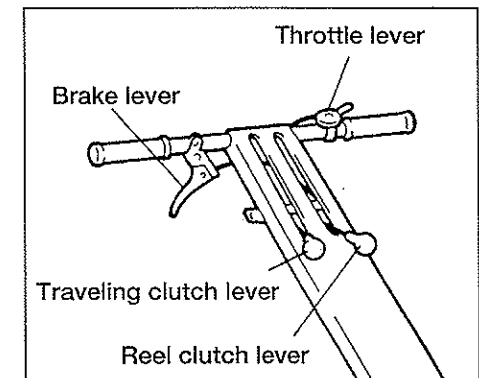
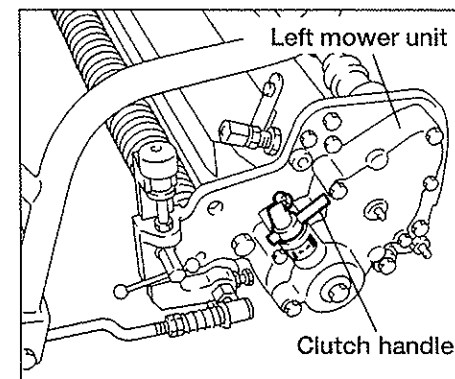
Clutch handles are provided for the left and right mowers. When desiring to mow with only one mower unit such as when moving the edge of a green, move the clutch handle to the left or right to stop one of the mower units.

Left mower unit: Turning the handle to the left engages the clutch.

Right mower unit: Turning the handle to the right engages the clutch.

CAUTION

Try to use the mower so that the blades of the left and right mower units wear evenly.



5. Riding Unit

This lawn mower is available with an optional riding unit. This can be used when moving the mower. When moving, align the brake of the riding unit with the brake of the main unit.

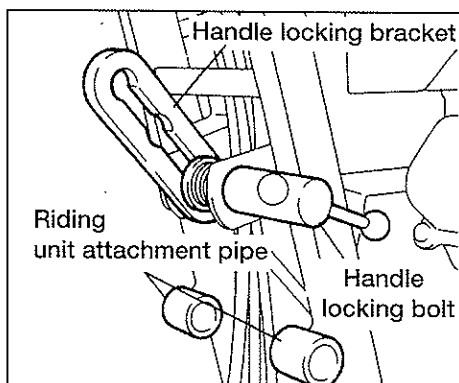
5-1. Attachment Procedure

- (1) Loosen the handle locking bolt on the right side of the handle, raise the handle to the upright position and then tighten the handle locking bolt to lock the handle in position.

CAUTION

At this time, only tighten the handle locking bolt after first confirming that the handle locking bolt is positioned correctly in the slot of the handle locking bracket that determines handle height.

- (2) Attach the riding unit to the riding unit attachment pipe located beneath the handle with the attachment pin.



6. Preliminary Inspection

6-1. Main Unit

- (1) Check the engine oil.
- (2) Clean the air cleaner.
- (3) Check the amount of gasoline remaining in the tank by looking at the gauge on the fuel tank. (The tank capacity : 4 ℓ)
- (4) Check that the handle is locked in position.
- (5) Check for any abnormalities in the V-belt.
- (6) Check the tire air pressure (0.8 kg/cm²).
- (7) Check for any loose nuts or bolts.
- (8) Check for any problems with the operation of all components.

6-2. Mower Units

- (1) Check the mowing height and cutting quality of each mower unit.
- (2) Check that the clutch handles of the left and right mower units are in the ON position.

7. Main Unit Adjustment Procedure

7-1. Handle Height

Remove the handle locking bolt on the right side of the handle and loosen the lock nut of the handle locking bracket. Adjust the length of the handle locking bracket by turning the handle locking bracket, and then tighten the lock nut and attach the handle locking bolt.

- Turning the handle locking bracket to the left: Lowers the handle
- Turning the handle locking bracket to the right: Raises the handle

CAUTION

At this time, only tighten the handle locking bolt after first confirming that the handle locking bolt is positioned correctly in the slot of the handle locking bracket that determines handle height.

7-2. Brake

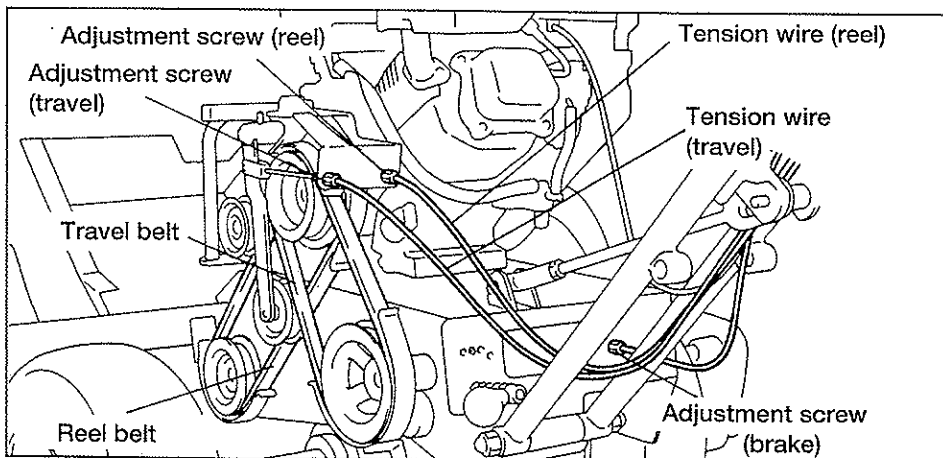
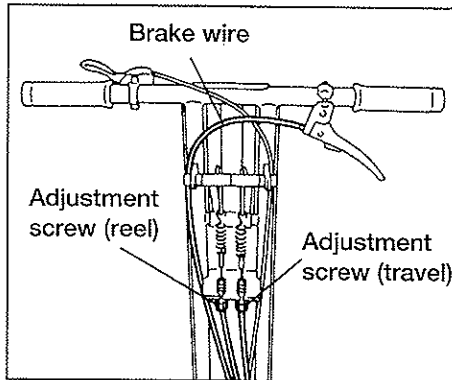
Loosen the lock nut located on the right side near the base of the handle and turn the break wire adjustment screw to the left to adjust the brake for optimum braking performance.

CAUTION

At this time, confirm that the brake lever can be locked with brake holding.

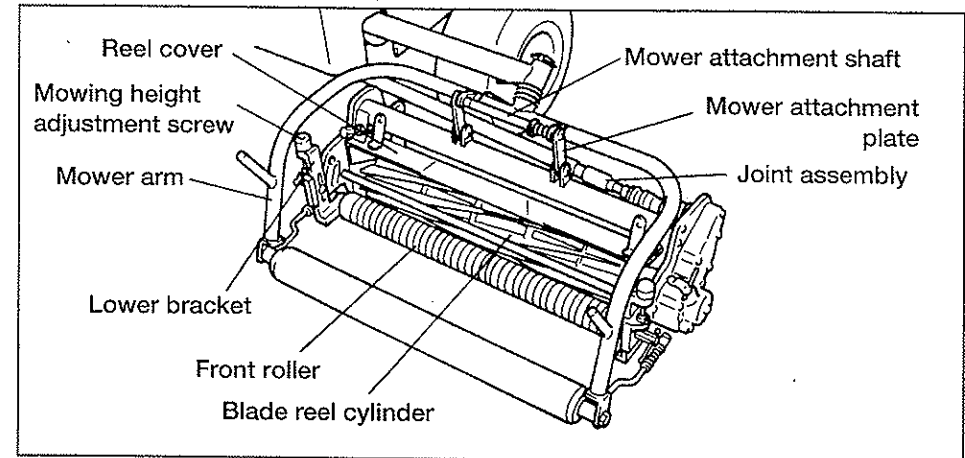
7-3. Travel and Reel Belts

Adjust the travel and reel belts by removing the cover on the left side of the main unit and turning the adjustment screws located on both ends of the tension wires.



8. Adjustment of Mower Units

8-1. Names of Components



8-2. Removal and Installation of Mower Units

- (1) Remove the grass catcher from the mower arm.
- (2) Turn the mower attachment shaft 90 degrees and remove the mower attachment plate.
- (3) Remove the mower attachment fitting and position it upright to suspend the mower arm.
- (4) Remove the mower unit from the main unit while pulling out the spline shaft from joint assembly.
- (5) Attach the mower unit to the mower arm by following the opposite procedure from that described above.

CAUTION

Always make sure to remove or install the mower units with the engine turned off and the mower positioned at a flat and level location.

8-3. Mowing Height

- (1) Align the mowing height gauge at the desired mowing height. (The minimum mowing height is as shown in the table below depending on the thickness of the bottom blade.)

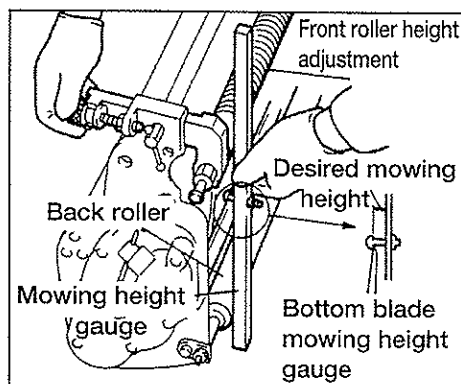
Blade thickness (mm)	Minimum mowing height (mm)	Code number
1.8	3.0	K2511000190
2.5	3.5	K2511000050
3.0	4.0	K2510000060

※The standard blade thickness of the LM210G is 2.5 mm.

CAUTION

The maximum mowing height is 10 mm.

- (2) Loosen the locking screw of the roller bracket and move the front roller up or down with the mowing height adjustment screw.
- (3) Determine the position of the front roller with the mowing height gauge.
- (4) Repeat this adjustment in the same manner on the right and left ends.
- (5) Tighten the locking screw and securely fix the roller bracket in position.



8-4. Lapping

- (1) Check the entire width of the blade reel cylinder to determine those locations that are able to easily cut a piece of newspaper and those that cannot. (It is recommended to make a mark at those locations that cut easily.)

CAUTION

Always make sure to perform the above check when lapping.

- (2) Attach the lapping shaft to the end of the blade reel cylinder shaft and connect it to the lapping machine.
 - Left mower: Attach the lapping shaft to the left side of the blade reel cylinder shaft.
 - Right mower: Attach the left lapping shaft to the right side of the blade reel cylinder shaft.
- (3) Rotate the blade reel cylinder in the opposite direction from mowing rotation, and apply abrasive with a brush to only those locations that easily cut the newspaper.

CAUTION

Since the blade is worn down at those locations that do not cut the newspaper easily, never apply abrasive to those locations.

- (4) Since the left side of the blade reel cylinder (as viewed from the direction of the operator) wears down more rapidly than the right side, apply a larger amount of abrasive to the right side. Blend powder (#200 to #400) and oil at the ratio of 1 to 3 or 1 to 4 to prepare the abrasive.
- (4) Rotate the blade reel cylinder for a short time with the abrasive applied and stop rotating when the contact sound can no longer be heard. Recheck the entire width of the blade reel cylinder to determine those locations where newspaper is cut easily and those where it is not.
- (5) Repeat steps (3) and (4) until the blade reel cylinder and bottom blade engage (make contact) uniformly over their entire surfaces and then apply abrasive over the entire blade reel cylinder to perform final lapping.
- (6) After lapping is completed, carefully remove all abrasive with steam, etc.

CAUTION

Since both the blade reel cylinder and bottom blade have sharp blades, use sufficient caution when handling.

Be particularly careful of the fingers when rotating the blade reel cylinder during checking of blade sharpness with newspaper. The service life of the blades can be maximally extended by lapping the blade reel cylinder cylindrically.

8-5. Blade Engagement

(when the edges of the blade reel cylinder and bottom blade are in parallel)

- (1) Turning the bottom blade adjuster nuts on the left and right mower units to the right results in slight engagement, while turning it to the left results in firm engagement. (Make sure that the blade engagement is balanced on both sides.)
- (2) Adjust blade engagement so that the blade reel cylinder and bottom blade are able to cut newspaper sharply without leaving a jagged edge over their entire width (make sure that the blade reel cylinder rotates easily by hand at this time).

CAUTION

In the case the pressure of the spring that pushes the bottom blade against the blade reel cylinder has decreased due to wearing of the blades, spring pressure can be adjusted by turning the threaded adjusting pipe.

8-6. Blade Alignment

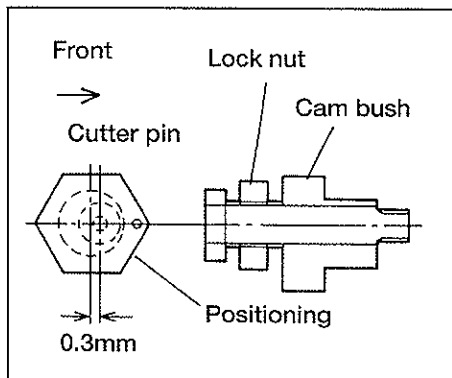
(when the edges of the blade reel cylinder and bottom blade are not in parallel)

- (1) Loosen the lock nut holding the cutter pin on the side on which a gap has formed between the blade reel cylinder and bottom blade, and turn the cam bush by the amount of the gap.

CAUTION

Turn the cam bush by 30 degrees to raise the bottom blade by 0.1 mm. The bottom blade can be adjusted within a maximum range of 0.3 mm by turning the cam bush.

- (2) Tighten the lock nut when adjustment has been completed.



8-7. Cylindrical Grinding of Blade Reel Cylinder

- (1) Grind the blade reel to shape a cylinder when it has worn down and become conical.
- (2) Inquire at the dealer where the mower was purchased regarding cylindrical grinding of the blade reel cylinder.

8-8. Installation of Blade Reel Cylinder

- (1) Apply an ample amount of grease (EXCELITE EP1) to the bearings and oil seals on the right and left sides of the blade reel cylinder.

CAUTION

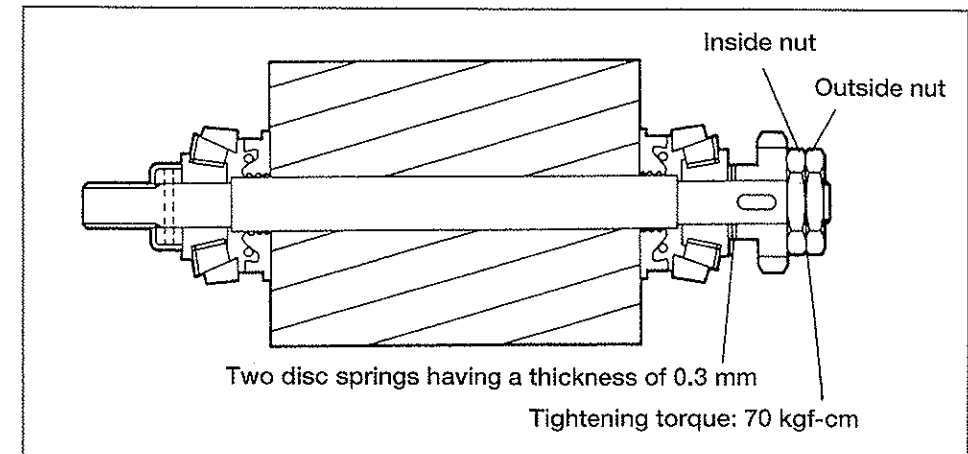
Replace the bearings and oil seals on the right and left sides of the blade reel cylinder with new ones.

- (2) Attach the blade reel cylinder to the mower unit, and completely tighten the inside nut so that there is no play in the bearing.
- (3) Return the inside nut to the location where the blade reel cylinder rotates easily by hand and there is no play in the bearing.

CAUTION

The tightening torque at this time is 70kg·cm in general.

- (4) Lock the blade reel cylinder in position with the outside nut.



9. Lubrication

Since grease nipples are provided at the locations of major sliding parts, periodically inject approximately 1 g of grease (EXCELITE EP1) into each grease nipple (1-2 injections with a small manual grease gun).

Lubricated locations	Operating time	
	Every 10 hours	Every 50 hours
Transmission gear case intermediate shaft	○	
Mower 1st shaft	○	
Mower intermediate shaft	○	
Mower front and rear rollers		○

CAUTION

Since needle bearings are used at those locations lubricated every 10 hours, particular caution is required when injecting grease.

10. Engine Regular Inspection

Maintenance and inspection should be performed according to the inspection table shown below to ensure that the engine is operating under the optimum conditions at all

Inspection items	Operating time		
	Every 8 hours	Every 15 hours	Every 50 hours
Inspection and addition of engine oil	○		
Changing the engine oil	First time		Second time forward
Cleaning the air cleaner		○	

Refer to the engine operation manual for further details.

11. Long-Term Storage

- (1) Refer to the engine operation manual for information relating to long-term storage of the engine.
- (2) Carefully clean the mower and apply grease and lubricating oil to all sliding parts.
- (3) Replace the bearings and oil seals on the left and right sides of the blade reel cylinders every season.

CAUTION

Make sure to replace these even if actual usage time is short.

Bearings: Tapered roller 30204JRP6

Oil seals: Oil seal 254210FA

MEMO

Twin Green Mower
LM210G

BARONESS LAWN MOWER

Parts Catalog

☆Ordering Parts:

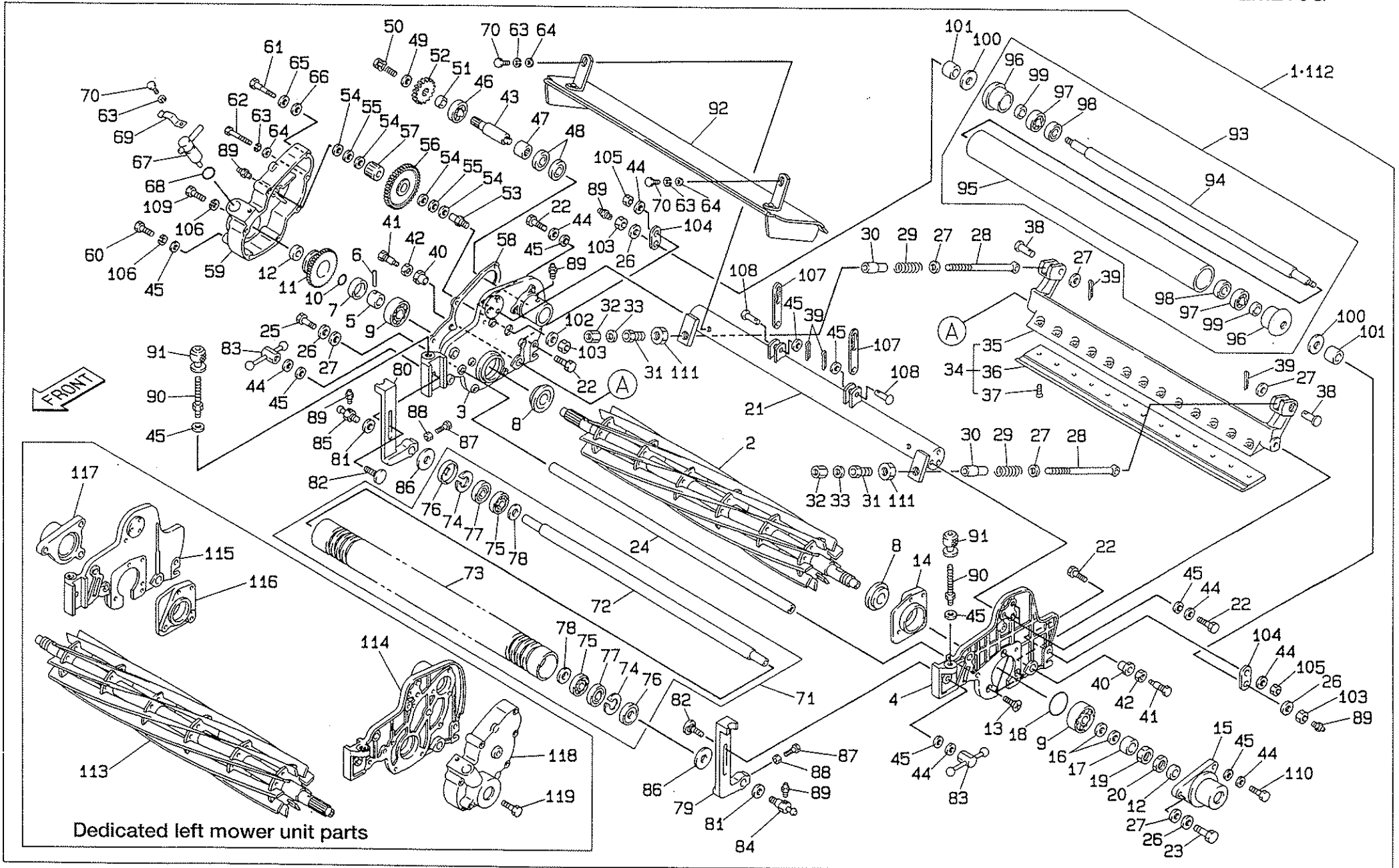
Although the parts shown in the following tables are controlled by computer, to prevent errors in shipping, please indicate the catalog number, code number and part name when ordering parts.

Example:

Catalog No.	Code No.	Part Name	Qty
1-1	LM210G-0130Z0	Right mower Ass'y	1

1. Mower Unit

LM210G



Catalog No.	Code No.	Part Name	Qty /Unit	Retail Price
1-1	LM210G-0130Z0	Right mower ass'y	1	
1-2	K280540090R	Blade reel cylinder 557	1	
1-3	LM54GA-0102ZR	R mower right frame	1	
1-4	LM210G-0103AR	R mower left frame	1	
1-5	K6213000040	Left bearing collar	2	
1-6	K6051045280	4.5 heat-treated pin 28	2	
1-7	K5300000283	Pinning cover	2	
1-8	K0830000020	Oil seal 254210FA	4	
1-9	K0631302040	Tapered roller 30204JRP6	4	
1-10	K0880018000	O-ring P18	2	
1-11	LM54G-0108Z0	32-tooth reel gear	2	
1-12	K0821628070	Oil seal MHSA16287	4	
1-13	K0041080203	8+ Countersunk head screw 20	6	
1-14	LM54GA-0110Z0	Left reel housing	1	
1-15	LM54G-0111ZR	Reel shaft cover	1	
1-16	K0220200001	20 corrugated washer	4	
1-17	K6212000250	20.2 STKM collar 25.417	2	
1-18	K0880050000	O-ring P50	2	
1-19	K0160000133	20 small nut 10P1.5	2	
1-20	K0160000083	20 small nut 8P1.5	2	
1-21	LM210G-0113ZR	Mower stay	2	
1-22	K0000080203	8 bolt 20	16	
1-23	K0071000593	10 knock bolt 40	2	
1-24	LM54GA-0114Z3	Mower front stay 603.4	2	
1-25	LM54GA-0115Z3	Knock bolt 25	2	
1-26	K0211100001	10 disc spring H	8	
1-27	K5000100003	10 washer	12	
1-28	K6511000052	Cutter adjustment bolt 185	4	
1-29	K1000000073	3.5 compression spring 17.560	4	
1-30	LM54GA-0117Z3	Collar 53.5	4	
1-31	K6081000033	Threaded pipe with cutter adjuster	4	
1-32	K0160000033	10 bottm blade adjuster nut	4	
1-33	K5011010163	1 SPCC washer 1016	4	
1-34	LM54G-0119A0	Bottom blade COMP	2	
1-35	LM54GA-0120AR	Bottom blade base	2	

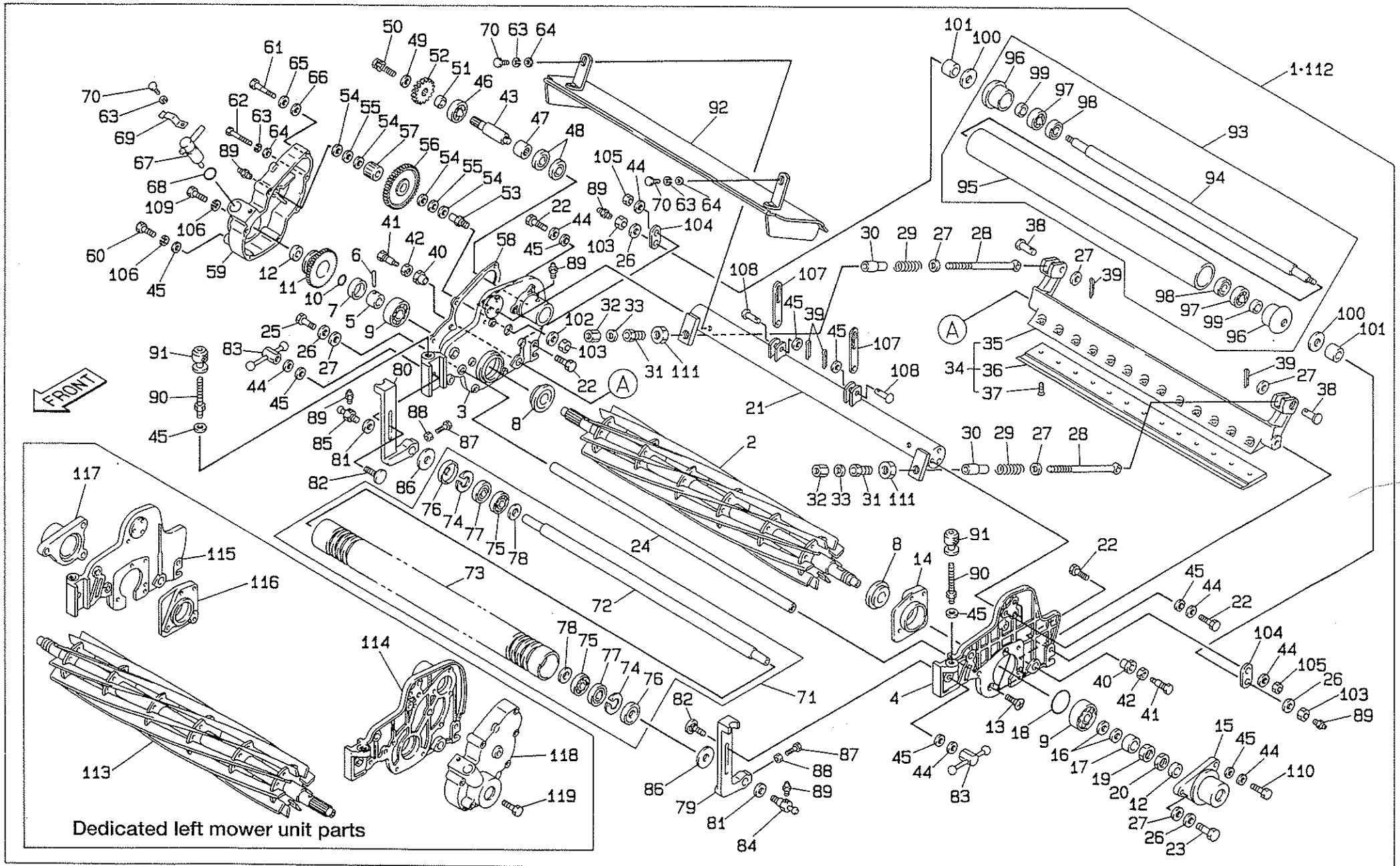
Catalog No.	Code No.	Part Name	Qty /Unit	Retail Price
1-36	K2511000050	55G bottom blade no. 1	2	
1-37	K0071000223	6 heat-treated countersunk head screw 12	26	
1-38	K6032000053	10 flat head pin 32	4	
1-39	K0300025203	2.5 cotter pin 20	8	
1-40	K6010000010	Cam bush	4	
1-41	K6082000010	Cutter pin R	4	
1-42	K0160000110	Lock nut	4	
1-43	LM54G-0123Z3	Shaft 1	2	
1-44	K0213080001	8 disc spring washer 1H	24	
1-45	K5000080003	8 washer	30	
1-46	K0613060030	Bearing 60032RDC3	2	
1-47	K0736000010	Needle TAF212920OG	2	
1-48	K0871212940	Needle seal DS21294	4	
1-49	K5012308202	2.3SPPC washer 820	2	
1-50	K0006080163	8 bolt 16S	2	
1-51	LM54G-0124Z0	17.1 collar 2210.7	2	
1-52	K6186000020	16-tooth gear	2	
1-53	LM54GA-0125Z0	Intermediate shaft	2	
1-54	K5051013280	1C5191P washer 1328	8	
1-55	K5020813280	0.8NBS55 washer 1328	4	
1-56	LM54G-0126Z0	37-tooth gear	2	
1-57	K0701317120	Needle KT131712	2	
1-58	LM54G-0127Z0	Case packing	2	
1-59	LM210G-0128ZR	Gear cover, right	1	
1-60	K0000080163	8 bolt 16	2	
1-61	LM210G-0130Z3	6 knock bolt 54	2	
1-62	K0000060503	6 bolt 50	12	
1-63	K0200060003	6S washer	18	
1-64	K5000060003	6 washer	16	
1-65	K0212070003	7 disc spring washer 1L	2	
1-66	K5000070003	7 washer	2	
1-67	K7321000103	Clutch handle	2	
1-68	K0880015000	O-ring P15	2	
1-69	K1090000053	Clutch clamp spring	2	
1-70	K0000060163	6 bolt 16	6	

1. Mower Unit

LM210G

1. Mower Unit

LM210G



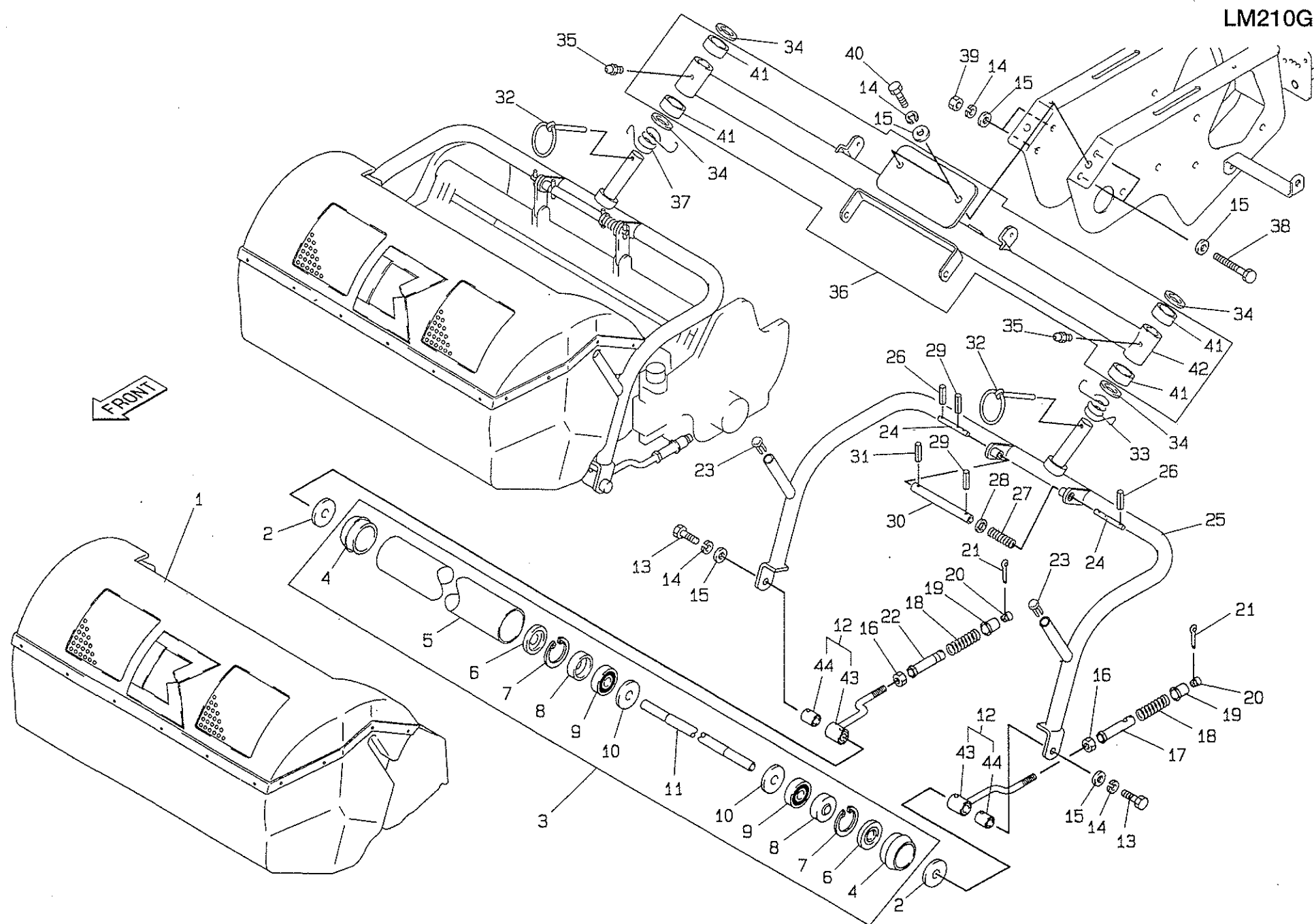
Catalog No.	Code No.	Part Name	Qty /Unit	Retail Price
1- 71	LM54G--0129Z0	Front roller ass'y	2	
1- 72	K6131000010	Front roller shaft 596	2	
1- 73	LM54G--0131Z0	Grooved roller 577	2	
1- 74	K0402042001	Stop ring R42	4	
1- 75	K0613062020	Bearing 62022RDC3	4	
1- 76	K0861000020	Oil seal TA1542.38	4	
1- 77	K0861000030	Oil seal 6202	4	
1- 78	K5051015280	1C5191P washer 1528	4	
1- 79	LM54GA-0105Z0	Left roller bracket	2	
1- 80	LM54GA-0106Z0	Right roller bracket	2	
1- 81	K5050310140	0.3C5191P washer 1014	0~10	
1- 82	K0025080303	8 square-base round-head bolt 30	4	
1- 83	K1330000030	Screw with handle P1.25	4	
1- 84	KN54G--0132Z0	Left mower attachment bolt	2	
1- 85	LM54G--0133Z0	Right mower attachment bolt	2	
1- 86	K5051015470	1 C5191P washer 1547	4	
1- 87	K0000060203	6 bolt 20	4	
1- 88	K0100060003	6 nut	4	
1- 89	K1440000012	Grease nipple	12	
1- 90	LM54G--0134Z0	Adjustment screw	4	
1- 91	K6084000063	Roller adjustment bracket	4	
1- 92	LM54GA-0135ZR	Reel cover	2	
1- 93	LM54GA-0136Z0	Rear roller ass'y	2	
1- 94	LM54GA-0137Z0	Rear roller shaft	2	
1- 95	LM54G--0138Z0	Mower rear roller	2	
1- 96	LM54G--0139Z0	Roller housing	4	
1- 97	K0613062020	Bearing 62022RDC3	4	
1- 98	K0811635090	Oil seal MHS16359	4	
1- 99	K0801525040	Oil seal MH15254	4	
1-100	K5051015280	1C5191P washer 1528	2	
1-101	LM54GA-0140Z3	Collar	4	
1-102	K0210100001	10 disc spring L	2	
1-103	K0160000283	10 nut 3P10H1	6	
1-104	LM54G--0148Z3	Stopper	4	
1-105	K0100080003	8 nut	4	

Catalog No.	Code No.	Part Name	Qty /Unit	Retail Price
1-106	K0200080003	8S washer	4	
1-107	LM210G-0114Z3	Mower attachment plate 95	4	
1-108	K6041080252	8 knife attachment pin 25.6	4	
1-109	K0016080163	8 left threaded bolt 16	1	
1-110	K0000080353	8 bolt 35	4	
1-111	K0160000123	Cutter adjusting lock nut	4	
1-112	LM210G-0131Z0	Left mower ass'y	1	
1-113	K282100090R	Blade reel cylinder 557	1	
1-114	LM210G-0104ZR	L mower left frame	1	
1-115	LM210G-0105AR	L mower right frame	1	
1-116	LM210G-0110A0	L mower right reel housing	1	
1-117	LM210G-0111ZR	L mower right reel shaft cover	1	
1-118	LM210G-0129ZR	Left gear cover	1	
1-119	K0001080163	8 bolt 16P1	1	

1. Mower Unit

LM210G

2. Mower Attachment Unit



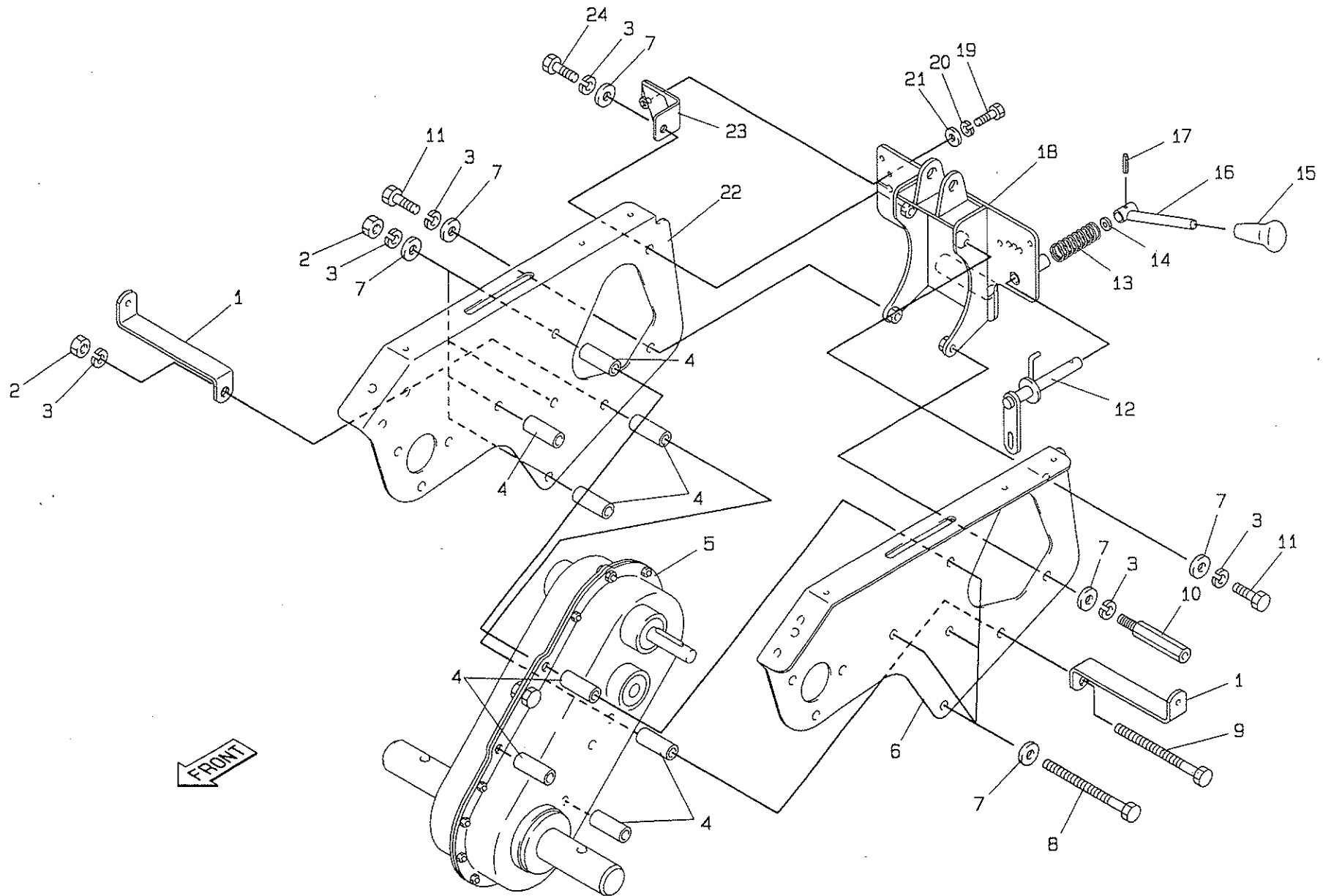
Catalog No.	Code No.	Part Name	Qty /Unit	Retail Price
2-1	LM210G-0207Z0	Grass catcher 210COMP	2	
2-2	K5051015470	1C5191 washer 1547	4	
2-3	LM54G--0810Z0	60 roller 590 ass'y	2	
2-4	LM54G--0812Z0	Roller housing 60	4	
2-5	K6223000022	54 roller pipe 60560	2	
2-6	K0861000020	Oil seal TA1542.38	4	
2-7	K0402042001	Stop ring R42	4	
2-8	K0861000030	Oil seal 6202	4	
2-9	K0613062020	Bearing 6202RDC3	4	
2-10	K5051015280	1C5191P washer 1528	4	
2-11	K6131000060	Roller shaft 651	2	
2-12	LM54G--0823Z0	Mower attachment bracket COMP	4	
2-13	K0000100303	10 bolt 30	4	
2-14	K0200100003	10S washer	8	
2-15	K5000100003	10 washer	10	
2-16	K0107100003	10 nut 3P1	4	
2-17	LM54G--0804Z3	Left pipe	2	
2-18	K10000000673	1 compression spring 1843	4	
2-19	LM54G--0808Z3	Stopper	4	
2-20	LM54G--0806Z3	Locking screw	4	
2-21	K0300025253	2.5 cotter pin 25	4	
2-22	LM54G--0805Z3	Right pipe	2	
2-23	K1310000060	Cap 12.7	4	
2-24	LM210G-0203Z3	8 attachment shaft 65	4	
2-25	LM210G-0201ZD	Mower arm	2	
2-26	K0320040201	4 spring pin 20	4	
2-27	K1000000223	1.2 compression spring 16.943	2	
2-28	K5011614223	1.6SPCC washer 1422	2	
2-29	K0320030201	3 spring pin 20	4	
2-30	LM210G-0204Z3	14 attachment shaft 128	2	
2-31	K0320030141	3 spring pin 14	2	
2-32	K6061060003	6 clip pin	2	
2-33	LM210G-0209Z3	Mower left spring	1	
2-34	K5051022350	1C5191P washer 2235	4	
2-35	K1440000012	Grease nipple	2	

Catalog No.	Code No.	Part Name	Qty /Unit	Retail Price
2-36	LM210G-0206Z0	Mower arm attachment bracket COMP	1	
2-37	LM210G-0210Z3	Mower right spring	1	
2-38	K0003101203	10 bolt 120	2	
2-39	K0100100003	10 nut	2	
2-40	K0000100253	10 bolt 25	2	
2-41	K6000000310	22 bush 2813	4	
2-42	LM210G-0205ZD	Mower arm attachment bracket	1	
2-43	LM54G--0803Z3	Mower attachment fitting	4	
2-44	K6000000150	15 bush with hole 2029	4	

2. Mower Attachment Unit	LM210G
---------------------------------	---------------

3. Frame/Transmission Unit A

LM210G



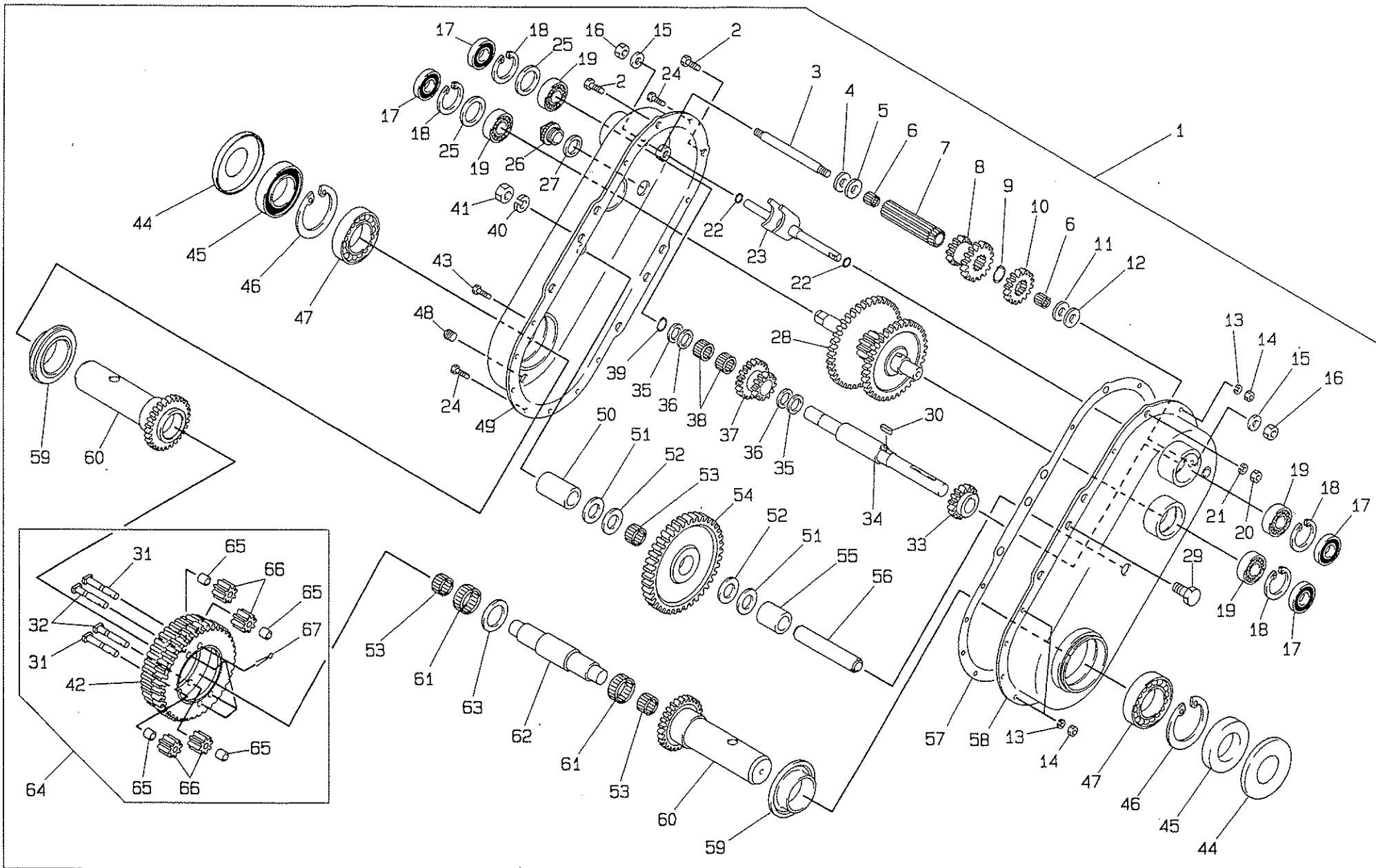
Catalog No.	Code No.	Part Name	Qty /Unit	Retail Price
3-1	LM210G-0308Z3	Cover attachment plate	2	
3-2	K0100100003	10 nut	5	
3-3	K0200100003	10S washer	9	
3-4	K6212001203	10.2STKM collar 1643.85	8	
3-5	LM210G-0309ZD	Transmission ass'y 210	1	
3-6	LM210G-0301Z3	Left transmission frame	1	
3-7	K5000100003	10 washer	12	
3-8	K0003101203	10 bolt 120	4	
3-9	K0003101253	10 bolt 125	1	
3-10	LM210G-0306Z3	Attachment bolt 94	1	
3-11	K0000100253	10 bolt 25	2	
3-12	LM210G-0304Z2	Gear change lever shaft	1	
3-13	K1000000213	1.4 compression spring 2168	1	
3-14	K5011012223	1SPCC washer 1222	1	
3-15	K1300000040	9 black handle grip 35.5	1	
3-16	LM210G-0305Z3	Gear change lever	1	
3-17	K0320040181	4 spring pin 18	1	
3-18	LM210G-0303Z3	Gear change lever attachment bracket	1	
3-19	K0000080203	8 bolt 20	1	
3-20	K0200080003	8S washer	1	
3-21	K5000080003	8 washer	1	
3-22	LM210G-0302Z3	Right transmission frame	1	
3-23	LM210G-0307Z3	Brake attachment reinforcing bracket	1	
3-24	K0000100303	10 bolt 30	1	

Catalog No.	Code No.	Part Name	Qty /Unit	Retail Price

3. Frame/Transmission Unit A	LM210G
------------------------------	--------

4. Frame/Transmission Unit B

LM210G



Catalog No.	Code No.	Part Name	Qty /Unit	Retail Price
4-1	LM210G-0309ZD	Transmission ass'y 210	1	
4-2	K0000060160	6 bolt 16	2	
4-3	LM80C-0121Z0	2nd shaft	1	
4-4	K5051010220	1C5191P washer 1022	1	
4-5	K5021010220	1NBS55 washer 1022	1	
4-6	K0701013130	Needle KT101313	2	
4-7	LM80C-0123B0	2nd shaft spline pipe	1	
4-8	LM80C-0127Z0	2nd shaft 14-tooth, 20-tooth gear	1	
4-9	K0401020001	Stop ring S20	1	
4-10	LM80C-0125A0	2nd shaft 18-tooth gear	1	
4-11	K5021010260	1NBS55 washer 1026	1	
4-12	K5051010260	1C5191P washer 1026	1	
4-13	K0200050003	5S washer	10	
4-14	K0100050003	5 nut	10	
4-15	K5012008182	2SPCC washer 818	2	
4-16	K0100080003	8 nut	2	
4-17	K0841535070	Oil seal AJN15367	4	
4-18	K0402035001	Stop ring R35	4	
4-19	K0613062020	Bearing 62022RDC3	4	
4-20	K0100060000	6 nut	2	
4-21	K0200060000	6S washer	2	
4-22	K0880009000	O-ring P9	2	
4-23	LM80C-0119Z0	Shifter shaft	1	
4-24	K0071000031	5 transmission case knock bolt	2	
4-25	K5060225350	0.29SPTE washer 2535	2	
4-26	K1400000010	Oil level plug 18	1	
4-27	K4010217250	2 oil sheet 17.525	1	
4-28	LM80C-0134B0	3rd shaft 12-tooth gear	1	
4-29	K0000100203	10 bolt 20	2	
4-30	K0500404160	4 double-ended round key 416	1	
4-31	K6033000010	Differential pin A	2	
4-32	K6033000020	Differential pin B	2	
4-33	LM80C-0108A0	1st shaft 17-tooth gear	1	
4-34	LM80C-0107Z0	1st shaft	1	
4-35	K5051015220	1C5191P washer 1522	2	

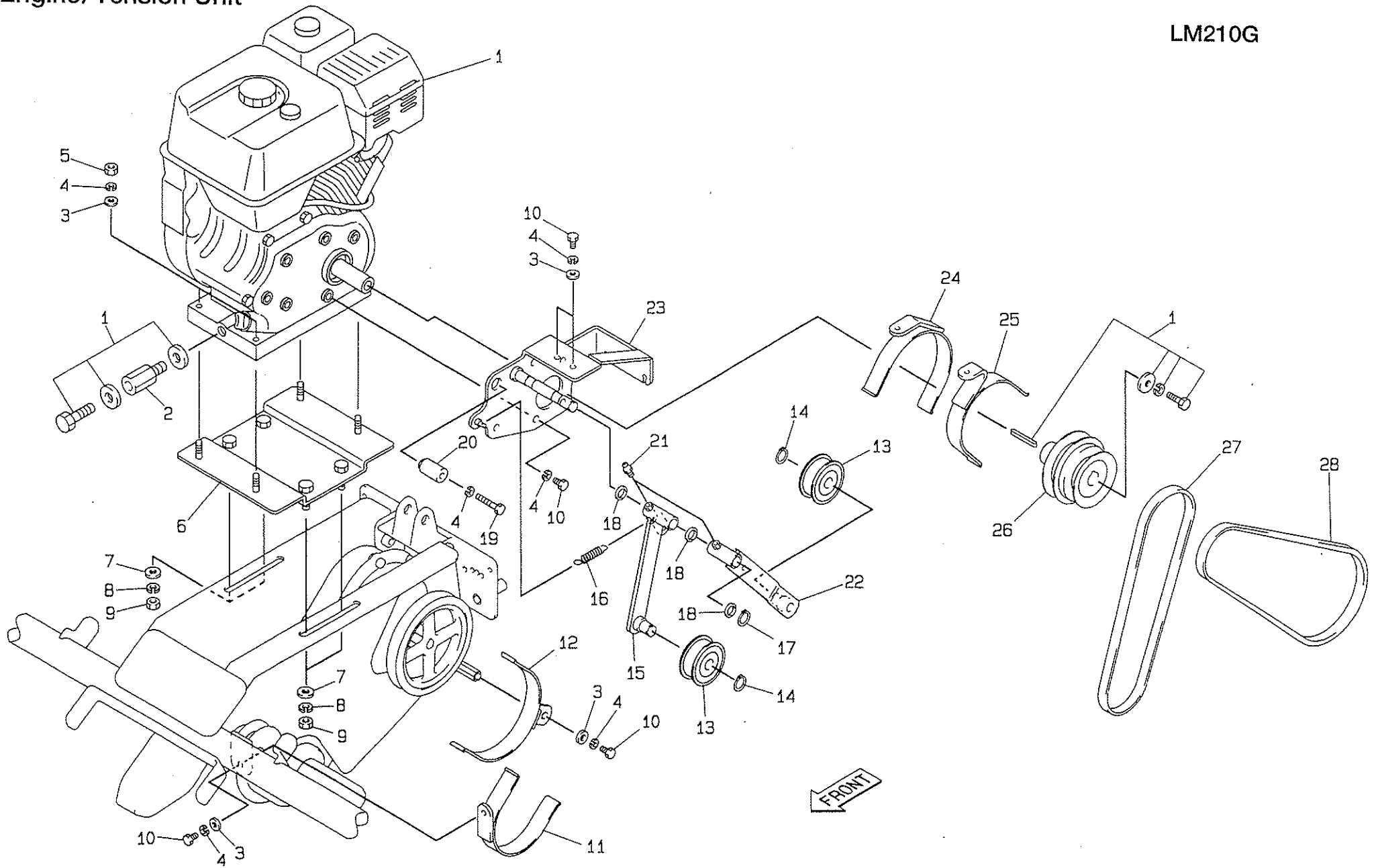
Catalog No.	Code No.	Part Name	Qty /Unit	Retail Price
4-36	K5021015220	1NBS55 washer 1522	2	
4-37	LM80C-0110A0	Back gear	1	
4-38	K0750150130	Needle R15/13	2	
4-39	K0401015001	Stop ring S15	1	
4-40	K0200100003	10S washer	2	
4-41	K0100100003	10 nut	2	
4-42	K7001000010	Axle 50-tooth gear	1	
4-43	K0033050121	5 heat-treated 8T bolt 12	8	
4-44	K0891000010	Axle seal 35686.5	2	
4-45	K0860000080	Oil seal TBX356212	2	
4-46	K0402062001	Stop ring R62	2	
4-47	K0613060070	Bearing 60072RDC3	2	
4-48	K1420000010	Exhaust port plug	1	
4-49	LM80C-0102Z0	Left transmission case	1	
4-50	LM80C-0145Z0	4th shaft right collar	1	
4-51	K5051017300	1C5191P washer 1730	2	
4-52	K5021017300	1NBS55 washer 1730	2	
4-53	K0750170130	Needle R17/13	3	
4-54	K6186000010	50-tooth gear	1	
4-55	LM80C-0141Z0	4th shaft left collar	1	
4-56	LM80C-0140A0	4th shaft pipe	1	
4-57	K4011000200	Transmission case packing	1	
4-58	LM80C-0101A0	Right transmission case	1	
4-59	K6202000090	30-tooth differential gear receiver	2	
4-60	LM80C-0147Z3	30-tooth differential gear	2	
4-61	K0702630130	Needle KT263013	2	
4-62	K6155000070	Connecting shaft	1	
4-63	K5051026370	1C5191P washer 2637	1	
4-64	K8000000010	50-tooth differential gear ass'y	1	
4-65	K6211000040	7SGP collar 10.59.5	4	
4-66	K6183000030	8-tooth pinion gear	4	
4-67	K0300025163	2.5 cotter pin 16	4	

4. Frame/Transmission Unit B

LM210G

5. Engine/Tension Unit

LM210G



Catalog No.	Code No.	Part Name	Qty /Unit	Retail Price
5-1	K 2 6 0 0 0 0 0 1 2 0	Mitsubishi engine GM181L	1	
5-2	L M 5 5 G B—0 7 2 7 B 3	Threaded pipe of waste oil	1	
5-3	K 5 0 0 0 0 8 0 0 0 3	8 washer	8	
5-4	K 0 2 0 0 0 8 0 0 0 3	8S washer	14	
5-5	K 0 1 0 0 0 8 0 0 0 3	8 nut	4	
5-6	L M 2 1 0 G—0 4 1 0 Z 3	Engine base	1	
5-7	K 5 0 0 0 1 0 0 0 0 3	10 washer	4	
5-8	K 0 2 0 0 1 0 0 0 0 3	10S washer	4	
5-9	K 0 1 0 0 1 0 0 0 0 3	10 nut	4	
5-10	K 0 0 0 0 0 8 0 1 6 3	8 bolt 16	9	
5-11	L M 2 1 0 G—0 4 0 8 Z 3	Reel belt stopper	1	
5-12	L M 2 1 0 G—0 4 0 9 Z 3	Traveling belt stopper	1	
5-13	K 2 4 7 0 1 8 0 6 0 0	Tension pulley 1860	2	
5-14	K 0 4 0 1 0 1 7 0 0 1	Stop ring S17	2	
5-15	L M 2 1 0 G—0 4 0 3 A 2	Reel tension lever	1	
5-16	K 1 0 3 0 0 0 0 0 0 3 2	1.2U hook spring 10.456	1	
5-17	K 0 4 0 1 0 1 5 0 0 1	Stop ring S15	1	
5-18	K 5 0 1 1 0 1 6 2 2 2	1SPCC washer 1622	3	
5-19	K 0 0 0 0 0 8 0 4 5 3	8 bolt 45	1	
5-20	L M 2 1 0 G—0 4 0 2 Z 3	Lever stopper	1	
5-21	K 1 4 4 0 0 0 0 0 1 2	Grease nipple	2	
5-22	L M 2 1 0 G—0 4 0 4 A 2	Traveling tension lever	1	
5-23	L M 2 1 0 G—0 4 0 1 Z 3	Tension attachment bracket	1	
5-24	L M 2 1 0 G—0 4 0 6 Z 3	Engine belt stopper, small	1	
5-25	L M 2 1 0 G—0 4 0 7 Z 3	Engine belt stopper, large	1	
5-26	L M 2 1 0 G—0 4 0 5 Z 3	Engine pulley	1	
5-27	K 2 3 4 2 0 3 4 0 0 0	V-belt OLB34	1	
5-28	K 2 3 4 2 0 2 8 0 0 0	V-belt OLB28	1	

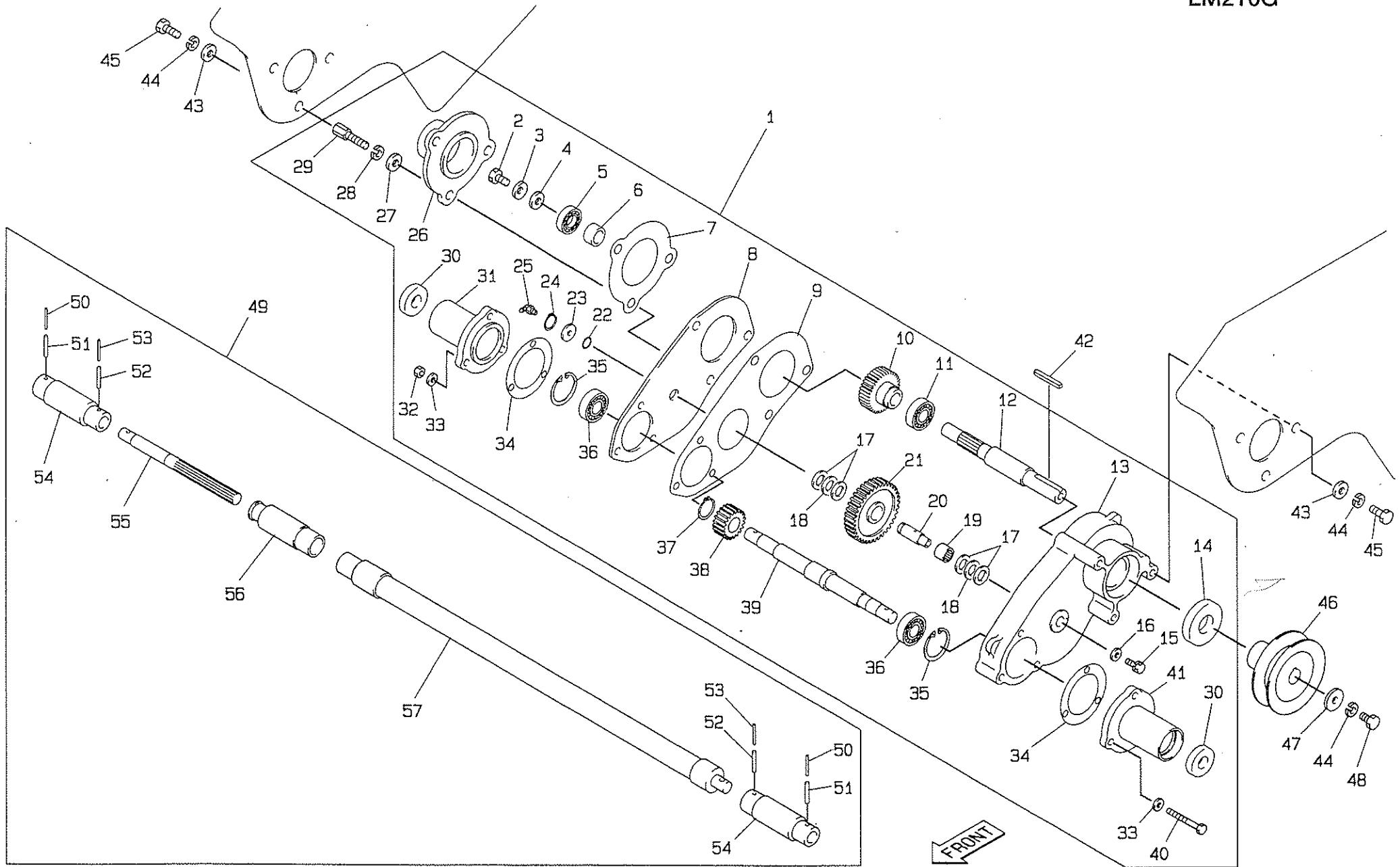
Catalog No.	Code No.	Part Name	Qty /Unit	Retail Price

5. Engine/Tension Unit

LM210G

6. Transmission

LM210G



Catalog No.	Code No.	Part Name	Qty /Unit	Retail Price
6-1	LM210G-0518Z0	Gear case ass'y	1	
6-2	K0010080151	8 heat-treated bolt 15	1	
6-3	K0213080001	8 disc spring washer 1H	1	
6-4	K5001080003	8 washer 21	1	
6-5	K0616062020	Bearing 62022NSEC3	1	
6-6	LM210G-0513Z0	1st shaft collar	1	
6-7	LM210G-0507Z0	Packing	1	
6-8	LM210G-0501Z3	Gear case cover	1	
6-9	LM210G-0511Z0	Case packing	1	
6-10	LM210G-0504Z0	31-tooth gear	1	
6-11	K0616062030	Bearing 62032NSEC3	1	
6-12	LM210G-0503Z3	1st shaft	1	
6-13	LM210G-0502ZD	Gear case	1	
6-14	K0852242080	Oil seal PJN22428	1	
6-15	K0006060163	6 bolt 16S	1	
6-16	K5012306202	2.3SPCC washer 620	1	
6-17	K5051013220	1C5191P washer 1322	4	
6-18	K5020813220	0.8NBS55 washer 1322	2	
6-19	K0701317120	Needle KT131712	1	
6-20	LM54G-0505A0	Intermediate shaft	1	
6-21	LM210G-0506Z0	35-tooth gear	1	
6-22	K0880012500	O-ring P12.5	1	
6-23	K5011013223	1SPCC washer 1322	1	
6-24	K0401013001	Stop ring S13	1	
6-25	K1440000046	C-shaped grease nipple PT1/8	1	
6-26	LM210G-0505ZD	1st shaft housing	1	
6-27	K5000080003	8 washer	3	
6-28	K0200080003	8S washer	3	
6-29	LM210G-0514Z3	Attachment bolt	3	
6-30	K0841535070	Oil seal AJN15357	2	
6-31	LM210G-0510ZD	Right housing	1	
6-32	K0100060003	6 nut	3	
6-33	K5000060003	6 washer	6	
6-34	LM54G-0509Z0	Packing	2	
6-35	K0402032001	Stop ring R32	2	

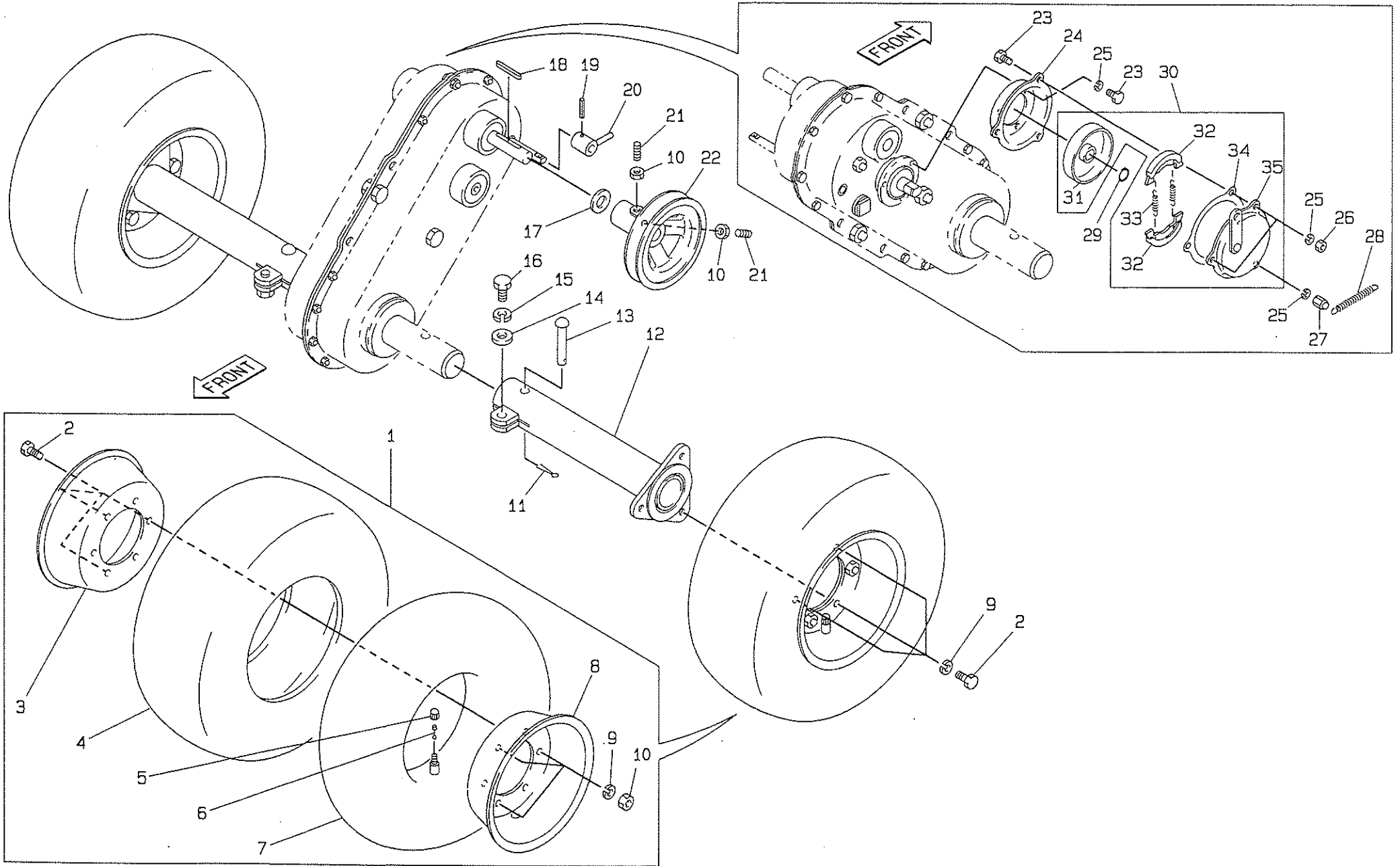
Catalog No.	Code No.	Part Name	Qty /Unit	Retail Price
6-36	K0601060020	Bearing 6002C3	2	
6-37	K0401017001	Stop ring S17	1	
6-38	LM210G-0512Z0	16-tooth gear	1	
6-39	LM210G-0508Z3	Transmission shaft	1	
6-40	K0003060503	6 bolt 50	3	
6-41	LM210G-0509ZD	Left housing	1	
6-42	K0500505310	5 double-ended round key 531.5	1	
6-43	K5000080003	8 washer	6	
6-44	K0200080003	8S washer	7	
6-45	K0000080203	8 bolt 20	6	
6-46	LM210G-0515Z3	Reel transmission pulley	1	
6-47	K5012308262	2.3SPCC washer 826	1	
6-48	K0000080163	8 bolt 16	1	
6-49	LM210G-0519Z0	Joint ass'y	2	
6-50	K0320025251	2.5 spring 25	4	
6-51	K0320040251	4 spring pin 25	4	
6-52	K0320040221	4 spring pin 22	4	
6-53	K0320025221	2.5 spring pin 22	4	
6-54	K1620000040	Joint TBJ14SBC	4	
6-55	LM210G-0517Z3	Spline shaft	2	
6-56	K4032000030	24 boot 250	2	
6-57	LM210G-0516Z3	Spline sleeve with boss	2	

6. Transmission

LM210G

7. Wheels

LM210G



Catalog No.	Code No.	Part Name	Qty /Unit	Retail Price
7-1	K 2 0 4 0 0 0 0 1 6 0	Tire 13 x 6.50 -6 ass'y	2	
7-2	K 0 0 0 0 0 8 0 1 6 3	8 bolt 16	12	
7-3	K 2 0 9 0 0 0 0 4 1 L	Wheel 5SPW-6	2	
7-4	K 2 0 4 1 0 0 0 1 0 0	Tire C190-13 x 6.50 - 6	2	
7-5	K 2 0 9 3 0 0 0 0 1 0	Valve cap	2	
7-6	K 2 0 9 2 0 0 0 0 2 0	Valve core No. 9000	2	
7-7	K 2 0 9 1 0 0 0 1 9 0	Tube 6.50-6TR244	2	
7-8	K 2 0 9 0 0 0 0 4 2 L	Wheel 5SPW - 6 with valve hole	2	
7-9	K 0 2 0 0 0 8 0 0 0 3	8S washer	12	
7-10	K 0 1 0 0 0 8 0 0 0 3	8 nut	8	
7-11	K 0 3 0 0 0 2 5 2 0 3	2.5 cotter pin 20	2	
7-12	L M 2 1 0 G-0 6 0 1 Z 3	Axle attachment base	2	
7-13	K 6 0 4 1 1 0 0 5 4 3	Axle attachment pin 54	2	
7-14	K 5 0 0 0 1 0 0 0 0 3	10 washer	2	
7-15	K 0 2 0 0 1 0 0 0 0 3	10S washer	2	
7-16	K 0 0 0 0 1 0 0 2 0 3	10 bolt 20	2	
7-17	K 5 0 5 1 0 1 5 2 8 0	1C5191P washer 1528	1	
7-18	K 0 5 0 0 4 0 4 3 5 0	4 double-end round key 435.5	1	
7-19	K 0 3 2 0 0 4 0 2 0 1	4 spring pin 20	1	
7-20	L M 2 1 0 G-0 6 0 4 Z 3	Shifter movement bracket	1	
7-21	K 0 0 2 3 0 8 0 2 0 1	8 hollow set 20	2	
7-22	L M 2 1 0 G-0 6 0 2 Z 3	Transmission pulley	1	
7-23	K 0 0 0 0 0 6 0 1 2 3	6 bolt 12	6	
7-24	L M 2 1 0 G-0 6 0 3 Z 3	Brake attachment cover	1	
7-25	K 0 2 0 0 0 6 0 0 0 3	6S washer	6	
7-26	K 0 1 0 0 0 6 0 0 0 3	6 nut	2	
7-27	K 0 1 6 0 0 0 0 4 3 2	6 hook spring nut	1	
7-28	K 1 0 3 0 0 0 0 0 5 2	1U hook spring 8.575	1	
7-29	K 0 4 0 1 0 1 4 0 0 1	Stop ring S14	1	
7-30	K 1 7 2 0 0 0 0 0 2 0	Brake M-0060810	1	
7-31	M-0 0 6 0 5 1 0-1 1	Brake drum	1	
7-32	M-0 0 6 0 5 1 0-1 2	Brake shoe	2	
7-33	M-0 0 6 0 5 1 0-8	Shoe return spring	2	
7-34	M-0 0 6 0 5 1 0-1 4	Packing	1	
*7-35	*M-0 0 6 0 5 1 0-1	Brake cover	1	

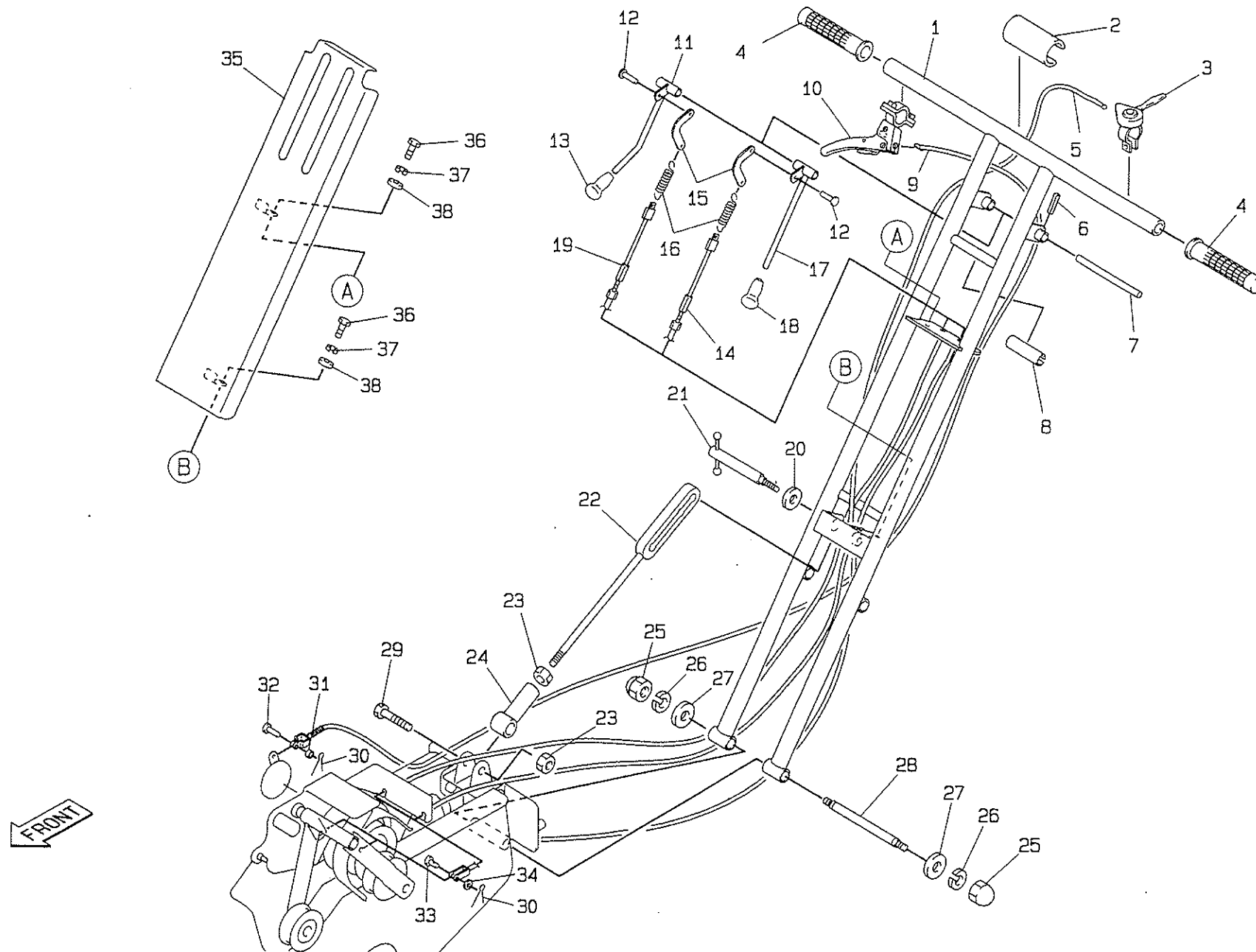
Catalog No.	Code No.	Part Name	Qty /Unit	Retail Price
	*M-0 0 6 0 5 1 0-6	Cam pin	1	
	*M-0 0 6 0 5 1 0-7	Shoe support pin	1	
	*M-0 0 6 0 8 1 0-9	Brake lever	1	
	*M-0 0 6 0 5 1 0-1 0	Flat washer	1	
	*M-0 0 6 0 5 1 0-1 3	O-ring	1	
	(*7-35 consists of *M Parts)			

7. Wheels

LM210G

8. Handle

LM210G



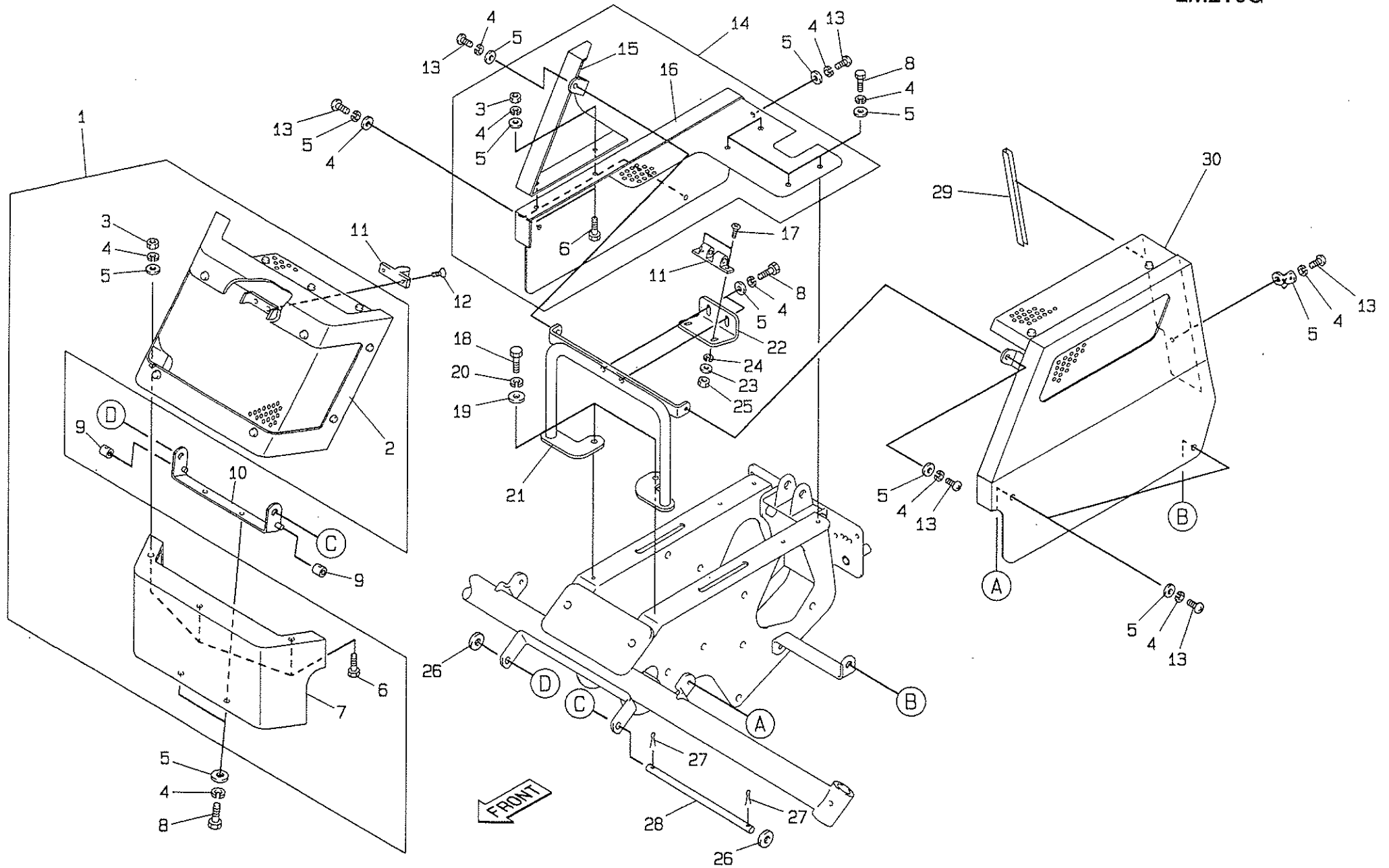
Catalog No.	Code No.	Part Name	Qty /Unit	Retail Price
8-1	LM210G-0701ZR	Handle	1	
8-2	LM210G-0713Z0	Stopper rubber	1	
8-3	K1203201754	Throttle lever E320175	1	
8-4	K1300000210	Black handle grip 25.4	2	
8-5	K1110142000	Throttle wire 1420	1	
8-6	K0320030181	3 spring pin 18	1	
8-7	LM210G-0704Z3	Clutch lever attachment shaft	1	
8-8	LM210G-0714Z0	Stopper rubber pipe	1	
8-9	K1120129000	Brake wire 1290	1	
8-10	K1241212074	Brake lever E121207	1	
8-11	LM210G-0703Z3	Traveling clutch lever	1	
8-12	K4501000012	Connecting pin	2	
8-13	K1300000040	9 black grip 35.5	1	
8-14	K1140101500	Tension wire 1015	1	
8-15	LM210G-0705Z3	Clutch wire contact	2	
8-16	K1040000022	2.6 hook spring 1569.7	2	
8-17	LM210G-0702Z3	Reel clutch lever	1	
8-18	K1300000050	9 red grip 35.5	1	
8-19	K1140104500	Tension wire 1045	1	
8-20	K5012314252	2.3SPCC washer 1425	1	
8-21	LM210G-0708Z0	Handle locking bolt COMP	1	
8-22	LM210G-0707Z3	Handle locking bracket	1	
8-23	K0100100003	10 nut	2	
8-24	LM210G-0706Z3	Handle height adjuster	1	
8-25	K0110120003	12 box nut	2	
8-26	K0200120003	12S washer	2	
8-27	K5000120003	12 washer	2	
8-28	LM210G-0711Z3	Handle attachment bolt	1	
8-29	LM210G-0710Z3	M10 locking bolt	1	
8-30	K0300016123	1.6 cotter pin 12	3	
8-31	K6210000082	5.2 collar 83	1	
8-32	K6030050123	5 flat head pin 12	1	
8-33	K6031060172	6 heat-treated flat head pin 17	2	
8-34	K5012306162	2.3SPCC washer 616	2	
8-35	LM210G-0712ZR	Handle cover	1	

Catalog No.	Code No.	Part Name	Qty /Unit	Retail Price
8-36	K0000060163	6 bolt 16	2	
8-37	K0200060003	6S washer	2	
8-38	K5000060003	6 washer	2	

8. Handle	LM210G
------------------	---------------

9. Cover

LM210G



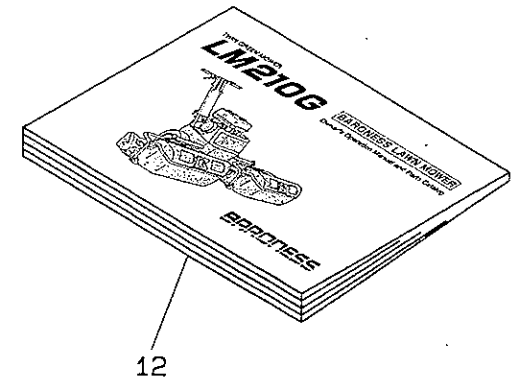
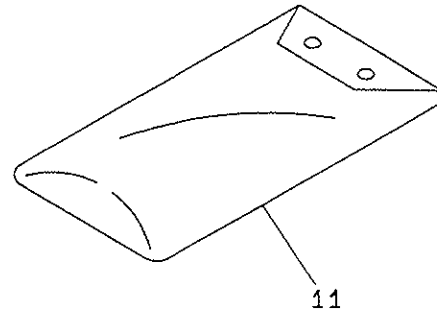
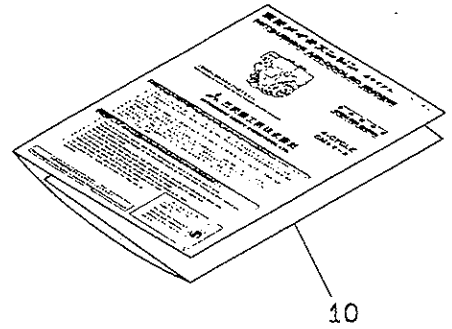
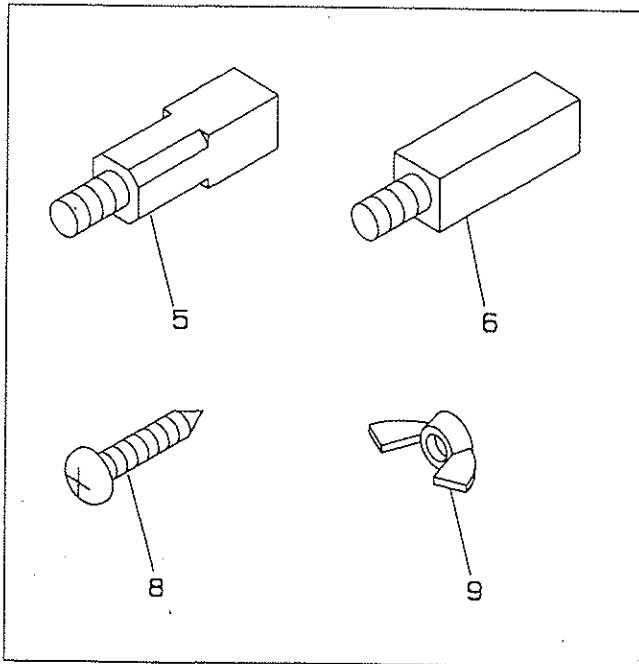
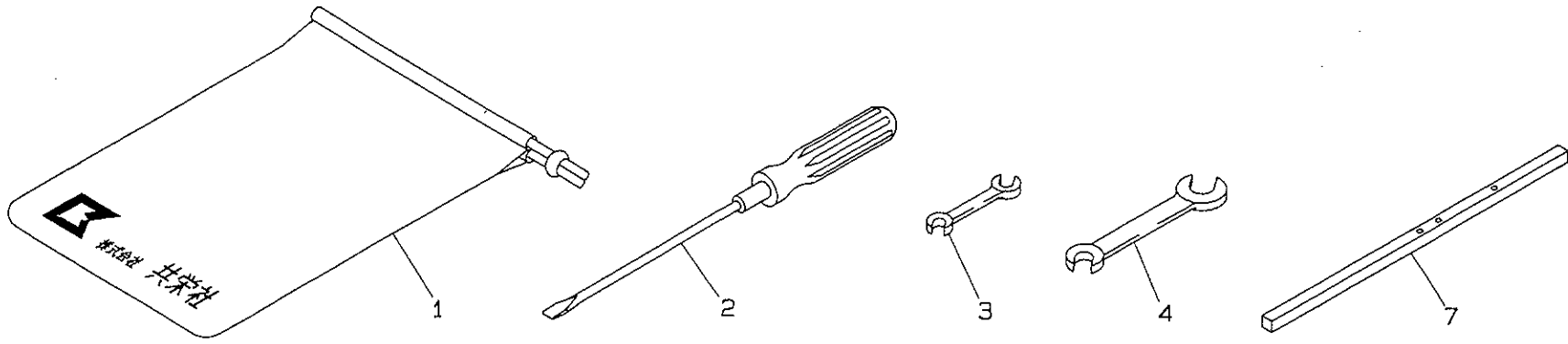
Catalog No.	Code No.	Part Name	Qty /Unit	Retail Price
9-1	L M 2 1 0 G—0 8 1 7 Z 0	Front cover ass'y	1	
9-2	L M 2 1 0 G—0 8 1 4 Z 0	Front upper cover COMP	1	
9-3	K 0 1 0 0 0 6 0 0 0 3	6 nut	5	
9-4	K 0 2 0 0 0 6 0 0 0 3	6S washer	21	
9-5	K 5 0 0 0 0 6 0 0 0 3	6 washer	21	
9-6	K 0 0 0 0 0 6 0 1 2 3	6 bolt 12	5	
9-7	L M 2 1 0 G—0 8 0 4 Z D	Front lower cover	1	
9-8	K 0 0 0 0 0 6 0 1 4 3	6 bolt 14	8	
9-9	K 4 0 3 1 0 0 0 0 3 0	15 rubber vibration insulator 7.5 15	2	
9-10	L M 2 1 0 G—0 8 1 3 Z 3	Cover attachment bracket	1	
9-11	K 1 5 2 1 0 0 0 0 5 0	Ball catcher TL-91	1	
9-12	K 0 0 4 1 0 3 0 1 0 3	3+ countersunk head screw 10	2	
9-13	K 0 0 4 2 0 6 0 1 2 3	6+ round head screw 12	8	
9-14	L M 2 1 0 G—0 8 1 5 Z 0	Right cover ass'y	1	
9-15	L M 2 1 0 G—0 8 0 5 Z R	Right upper cover	1	
9-16	L M 2 1 0 G—0 8 0 6 Z D	Right lower cover	1	
9-17	K 0 0 4 1 0 3 0 1 4 3	3+ countersunk head screw 14	2	
9-18	K 0 0 0 0 0 8 0 2 0 3	8 bolt 20	2	
9-19	K 5 0 0 0 0 8 0 0 0 3	8 washer	2	
9-20	K 0 2 0 0 0 8 0 0 0 3	8S washer	2	
9-21	L M 2 1 0 G—0 8 1 0 Z 3	Cover front attachment bracket	1	
9-22	L M 2 1 0 G—0 8 1 1 Z 3	Ball catcher attachment plate	1	
9-23	K 5 0 0 0 0 3 0 0 0 3	3 washer	2	
9-24	K 0 2 0 0 0 3 0 0 0 3	3S washer	2	
9-25	K 0 1 0 0 0 3 0 0 0 3	3 nut	2	
9-26	K 5 0 0 0 1 0 0 0 0 3	10 washer	2	
9-27	K 0 3 0 0 0 2 5 1 6 3	2.5 cotter pin 16	2	
9-28	L M 2 1 0 G—0 8 1 2 Z 3	Cover attachment shaft	1	
9-29	K 3 1 9 7 0 0 1 9 0 0	Small black trim 190	1	
9-30	L M 2 1 0 G—0 8 1 6 Z 0	Right cover COMP	1	

Catalog No.	Code No.	Part Name	Qty /Unit	Retail Price

9. Cover	LM210G
-----------------	---------------

10. Tools

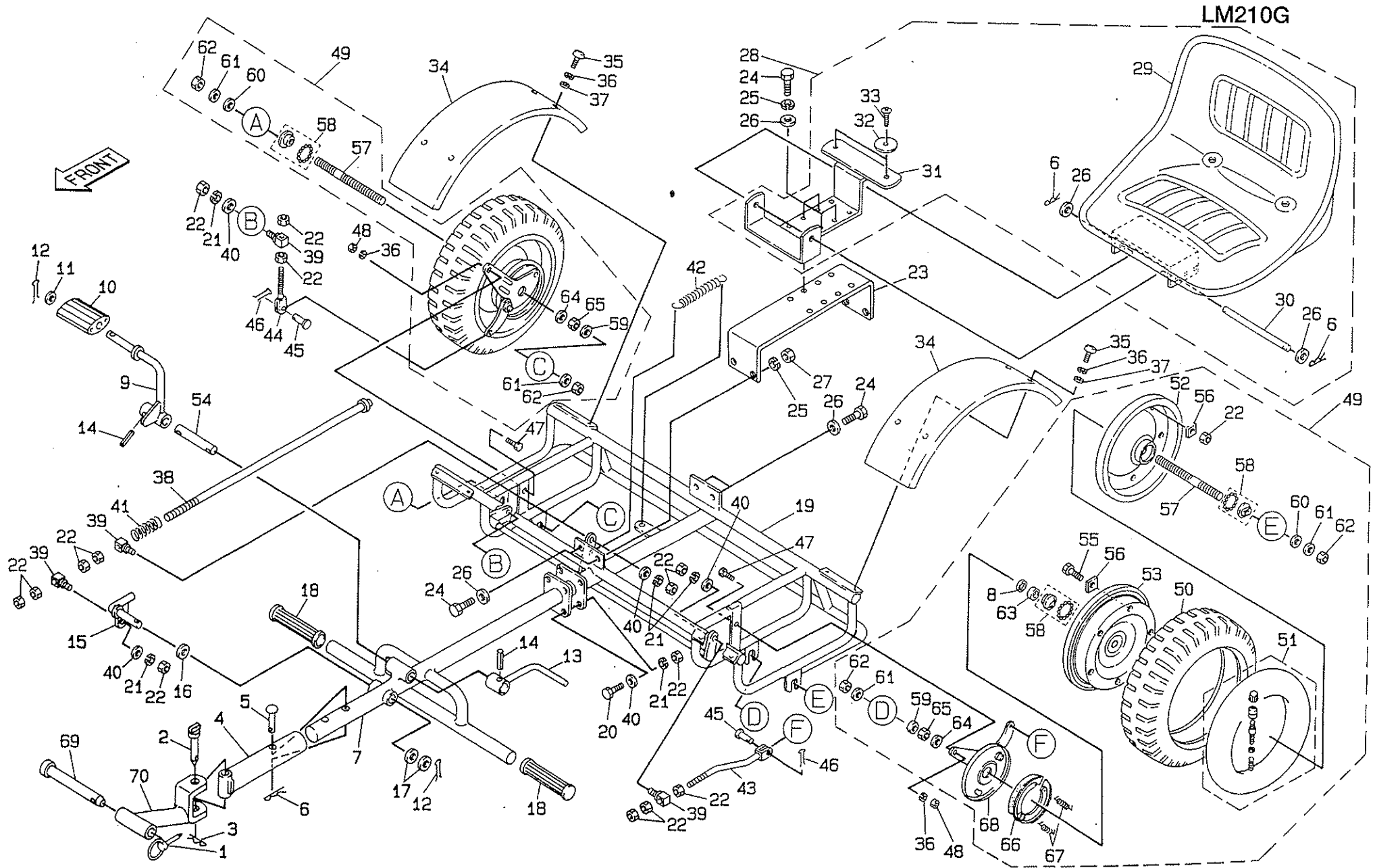
LM210G



Catalog No.	Code No.	Part Name	Qty /Unit	Retail Price
10-1	K 4 8 0 1 0 0 0 0 2 0	Tool bag	1	
10-2	K 4 8 2 0 0 0 0 0 2 0	- screwdriver N through 200	1	
10-3	K 4 8 1 0 0 8 0 1 0 2	Spanner 8 x 10	1	
10-4	K 4 8 1 0 1 3 0 1 7 2	Spanner 13 x 17	1	
10-5	K 6 0 9 0 0 0 0 3 3 2	Reel lapping shaft	1	
10-6	LM 2 1 0 G - 1 0 0 1 Z 3	Left reel lapping shaft	1	
10-7	K 6 0 9 0 0 0 0 0 7 2	Mowing height gauge 3	1	
10-8	K 0 0 4 6 0 6 0 3 0 2	6+ tapping screw C-1 round head 30	1	
10-9	K 0 1 4 1 0 6 0 0 0 2	6 butterfly nut 3	1	
10-10	K 2 6 0 0 GM 1 8 0 L 0 1	Engine operation manual	1	
10-11	K 2 6 0 0 GM 1 8 0 L 1 0	Engine tool set	1	
10-12	LM 2 1 0 G - 9 3 D - 0 E	Parts list	1	

Catalog No.	Code No.	Part Name	Qty /Unit	Retail Price

11. Riding Unit



Catalog No.	Code No.	Part Name	Qty /Unit	Retail Price
11-1	K 6 0 6 1 0 6 0 0 0 2	6 clip pin	1	
11-2	K 6 0 6 2 0 0 0 0 1 2	12.7 hitch pin 66	1	
11-3	K 0 3 3 1 3 0 0 0 0 2	13 snap pin	1	
11-4	K 7 1 4 5 0 0 0 0 3 R	44 joint bracket 200	1	
11-5	K 6 0 4 1 1 0 0 5 4 2	Tow bar attachment pin 54	1	
11-6	K 0 3 3 1 0 0 0 0 0 2	10 snap pin	3	
11-7	L M 2 1 0 S L 0 1 0 3 Z R	Riding unit tow bar	1	
11-8	K 2 0 9 6 0 0 0 1 2 2	1 washer 16.225	2	
11-9	L M 2 1 0 S L 0 1 0 4 Z 2	Brake pedal	1	
11-10	K 4 0 5 0 0 0 0 0 3 0	Brake pedal rubber 12.7	1	
11-11	K 5 0 1 2 0 1 3 2 0 2	2SPCC washer 12.820	1	
11-12	K 0 3 0 0 0 2 5 3 2 2	2.5 cotter pin 32	2	
11-13	K 7 3 4 5 0 0 0 1 3 2	Return lever	1	
11-14	K 0 3 2 0 0 4 0 2 2 1	4 spring pin 22	2	
11-15	K 7 3 4 5 0 0 0 0 9 2	Brake rod lever	1	
11-16	K 5 0 5 1 0 1 3 2 2 0	1C5191P washer 1322	1	
11-17	K 5 0 1 1 0 1 3 2 4 2	1SPCC washer 1324	2	
11-18	K 1 3 0 0 0 0 0 1 5 0	20 green grip 31	2	
11-19	K 7 8 9 9 0 0 0 2 3 R	Riding unit platform	1	
11-20	K 0 0 0 0 0 8 0 2 5 2	8 bolt 25	4	
11-21	K 0 2 0 0 0 8 0 0 0 2	8S washer	8	
11-22	K 0 1 0 0 0 8 0 0 0 2	8 nut	27	
11-23	L M 2 1 0 S L 0 1 0 6 Z R	Saddle attachment plate	1	
11-24	K 0 0 0 0 1 0 0 2 5 2	10 bolt 25	8	
11-25	K 0 2 0 0 1 0 0 0 0 2	10S washer	8	
11-26	K 5 0 0 0 1 0 0 0 0 2	10 washer	10	
11-27	K 0 1 0 0 1 0 0 0 0 2	10 nut	4	
11-28	K 1 7 0 0 0 0 0 0 4 0	Saddle GTM with base ass'y	1 set	
11-29	K 1 7 0 1 0 0 0 0 1 0	Saddle GTM	1	
11-30	K 1 7 0 1 0 0 0 0 2 2	Saddle shaft GTM	1	
11-31	K 1 7 0 1 0 0 0 0 3 R	Saddle attachment bracket GTM	1	
11-32	K 1 7 0 1 0 0 0 0 4 0	Saddle holding rubber GTM	2	
11-33	K 0 0 4 1 0 6 0 1 6 2	6+ countersunk head screw 16	2	
11-34	K 5 3 7 0 0 0 0 2 6 R	Wheel cover	2	
11-35	K 0 0 4 2 0 6 0 1 0 2	6+ round head screw 10	8	

Catalog No.	Code No.	Part Name	Qty /Unit	Retail Price
11-36	K 0 2 0 0 0 6 0 0 0 2	6S washer	10	
11-37	K 5 0 0 0 0 6 0 0 0 2	6 washer	8	
11-38	L M 2 1 0 S L 0 1 0 7 Z 2	Brake rod	1	
11-39	K 6 0 9 0 0 0 0 0 6 2	Spring adjuster	4	
11-40	K 5 0 0 0 0 8 0 0 0 2	8 washer	8	
11-41	K 1 0 0 0 0 0 0 0 7 2	3.5 compression spring 17.560	1	
11-42	K 1 0 2 0 0 0 0 0 1 2	2 round hook spring 1884	1	
11-43	K 7 3 4 5 0 0 0 1 2 2	Left brake lever shaft	1	
11-44	K 7 3 4 5 0 0 0 1 1 2	Right brake lever shaft	1	
11-45	K 6 0 3 0 0 5 0 1 5 2	5 flat head pin 15	2	
11-46	K 0 3 0 0 0 2 0 1 6 2	2 cotter pin 16	2	
11-47	K 0 0 0 0 0 6 0 2 0 2	6 bolt 20	2	
11-48	K 0 1 0 0 0 6 0 0 0 2	6 nut	2	
11-49	K 2 0 3 0 0 0 0 0 5 0	Tire 3.00 - 8 ass'y	2 sets	
11-50	K 2 0 3 1 0 0 0 0 4 0	Tire 3.00 - 82PR	2	
11-51	K 2 0 9 1 0 0 0 1 4 0	Tube 3.00-8	2	
11-52	K 2 0 9 0 0 0 0 0 8 L	Wheel 3.00-8 with valve hole	2	
11-53	K 2 0 9 0 0 0 0 0 9 L	Wheel 3.00-8	2	
11-54	L M 2 1 0 S L 0 1 0 5 Z 2	Brake pedal attachment shaft	1	
11-55	K 0 0 0 0 0 8 0 1 6 2	8 bolt 16	10	
11-56	K 2 0 9 6 0 0 0 1 4 0	Wheel washer	20	
11-57	K 2 0 9 6 0 0 0 0 1 2	Riding unit wheel shaft	2	
11-58	K 2 0 9 6 0 0 0 0 2 0	Riding unit bearing	4	
11-59	K 6 2 1 2 0 0 0 2 3 2	16STKM collar 25.47.5	2	
11-60	K 6 2 1 2 0 0 0 2 4 2	16STKM collar 25.45.5	2	
11-61	K 2 0 9 6 0 0 0 1 1 0	2 washer 17.229	4	
11-62	K 2 0 9 6 0 0 0 0 9 0	BC5/8 nut 12	4	
11-63	K 2 0 9 6 0 0 0 1 3 2	Riding unit collar	2	
11-64	K 2 0 9 6 0 0 0 0 5 2	1 washer 2030	2	
11-65	K 2 0 9 6 0 0 0 1 0 0	Brake cover attachment nut	2	
11-66	K 2 0 9 6 0 0 0 0 6 0	Riding unit brake shoe	2 set	
11-67	K 2 0 9 6 0 0 0 0 7 2	Riding unit brake return spring	4	
11-68	K 2 0 9 6 0 0 0 0 8 2	Riding unit brake cover	2	
11-69	L M 2 1 0 S L 0 1 0 1 Z 2	16 attachment pin 155	1	
11-70	L M 2 1 0 S L 0 1 0 2 Z 2	Joint attachment bracket	1	

11. Riding Unit

LM210G

MEMO

MEMO

KYOISHA CO., LTD.

BRONSS
Turf Care Machinery
Tel : (0533) 84-1221
Fax: (0533) 84-1220

Head Office
1-26, Miyuki-cho, Toyokawa,
Aichi-Pref, 442-8530 Japan.

