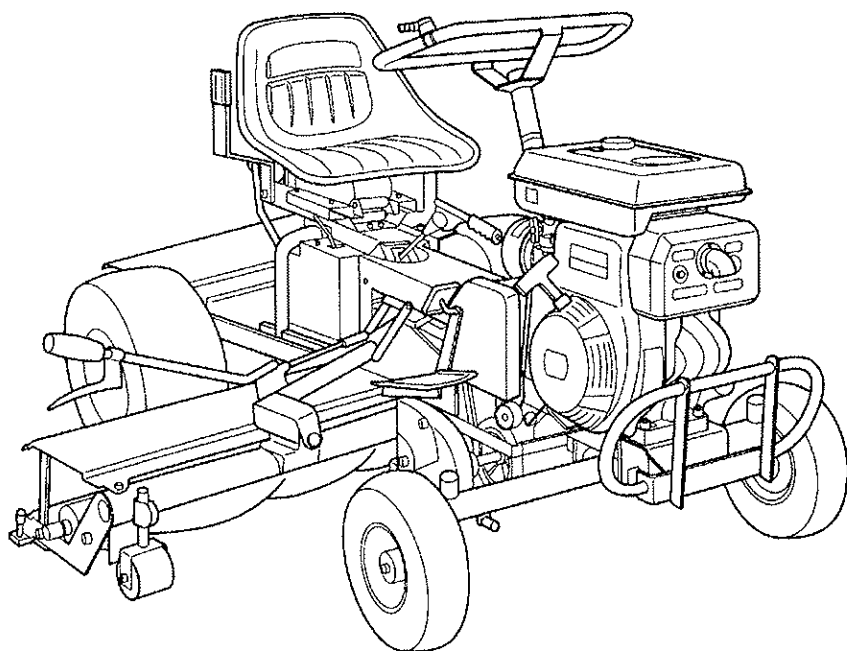


SUPER MOWER  
***LM180BS***  
SAXON PETROL MODEL



**BARONESS**  
Lawn Mower

Owner's Handling Manual & Parts Catalog  
for Saxon Petrol 2007 Model

Read this manual before using the machine.

 **KYOEISHA CO., LTD.**



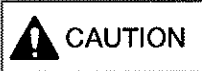
## Greeting

Thank you very much for the riding-type triple lawn mower, Baroness Super Mower LM180B.

This manual explains the method of correct handling, adjustments, and inspection of LM180B. Prior to use, carefully read this Handling Manual, as well as the separate Handling Manual for Engine to thoroughly understand the contents for safe, correct operation.

### = NOTE =

- ◆ "Right and left" described in this Manual apply to cases where the machine is viewed from the driver's seat.
- ◆ This machine cannot be driven on a public road.
- ◆ The contents of this Manual are subject to change for improvement without notice.



- Marks attached to this Handling Manual and the machine indicate precautions for safety. Read them carefully.
- Understand well the operating procedures and safety precautions before operating the machine.
- The marks and explanatory sentences should be kept clean. If they are lost or damaged, attach new marks.

## Warning Marks



Negligence of the warning will cause death or serious injury.



Negligence of the warning may cause death or serious injury.



Negligence of the warning may cause injury.

## Symbols



----- Caution mark



50h

----- Grease  
Every 50hours



----- Hot surface  
Burn on hand



----- Attention to  
exhaust gas



----- See Handling Manual



----- Danger mark  
Hand cut



----- Hand may be  
caught in belt



----- Danger of mower  
falling



----- Gasoline



----- Danger mark  
Foot cut

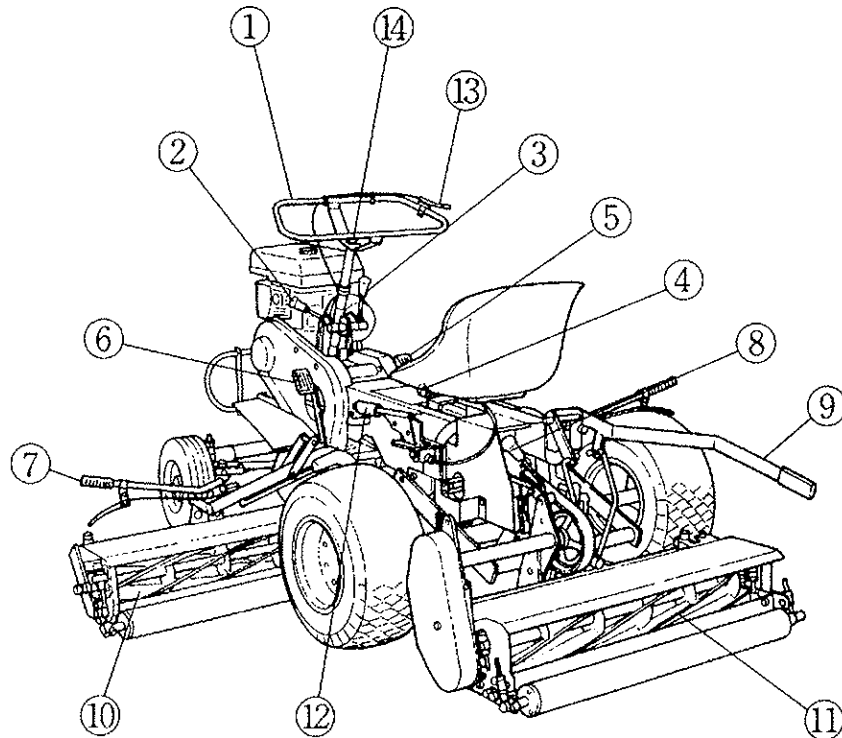


----- Caution: Flammable



----- Watch for flying objects

## 2. Names of Portions



(Fig. 1)

No.	Name	No.	Name
①	Handle	⑧	Clutch lever for rear mower
②	Traveling clutch lever	⑨	Lifting lever (for rear mower)
③	Clutch lever for right/left mowers	⑩	Left blade reel cylinder
④	Change lever	⑪	Rear blade reel cylinder
⑤	Brake pedal	⑫	Side brake
⑥	Diff-lock pedal	⑬	Throttle lever
⑦	Lifting lever (for right/left mowers)	⑭	Engine stop switch

Table 1

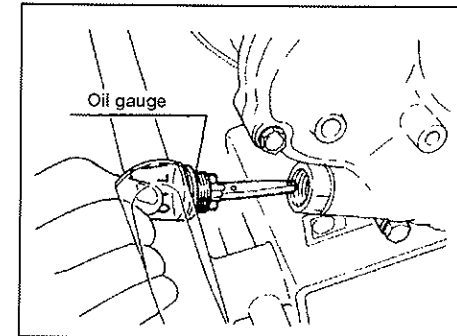
## 3. Inspection before Use



### 3-1 Inspection of Engine Oil

For details, see the separate Handling Manual for Engine.

Check the engine oil at a flat place. Put in the oil gauge (without screwing it in) through the oil filter port to check that the oil level is between the two knurl lines on the gauge. If not, supply oil.



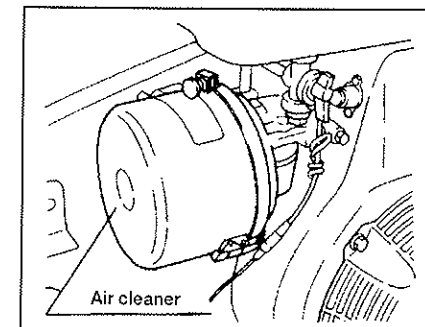
(Fig. 2)

### 3-2 Inspection of Air Cleaner



For details, see the separate Handling Manual for Engine.

If the air cleaner element is heavily contaminated, engine starting failure, insufficient output, or malfunction will result, and the engine life will be extremely shortened as well. For the cleaning method, see 7-2 Cleaning of Air Cleaner.



(Fig. 3)

### 3-3. Inspection of Fuel



When fuel is insufficient, supply lead-free gasoline for automobiles.  
The tank capacity is approx. 6 litres.

### 3-4. Inspection of Oil Leakage

Check the bottom of the machine for oil leakage.

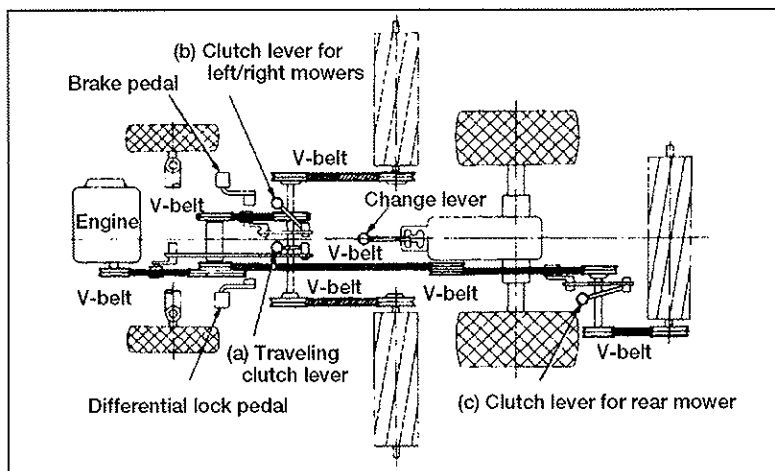
### 3-5. Inspection of Tires

The mowing height changes according to the pneumatic pressure of the tire.  
Keep the pneumatic pressure constant at all times.

	Size of tire	Pneumatic pressure
Front wheel	4.00-5	2.0 kg/cm <sup>2</sup>
Rear wheel	18x8.50-8	0.8 kg/cm <sup>2</sup>

### 3-6. Inspection of Belts

Excessive belt tension will damage bearings or break shafts. If belts are excessively loose, slippage and belt damage will result, or the reel rotation and operation speed will not be high enough for mowing. Check the belt for appropriate tension and make sure that there is no crack.



(Fig.4)

Belts are installed as shown in Fig.4. (6 types; 8 in total)

For adjustment of belts, refer to "4-11 Adjustment of Belt Tension."

### 3-7. Inspection of Mowers

Check the three mower units for the mowing height and sharpness of blades.

## 4. Operation and Adjustment of Each Section

### 4-1. Start / Stop of Engine



For details, refer to the engine Handling manual.

#### 1) Start

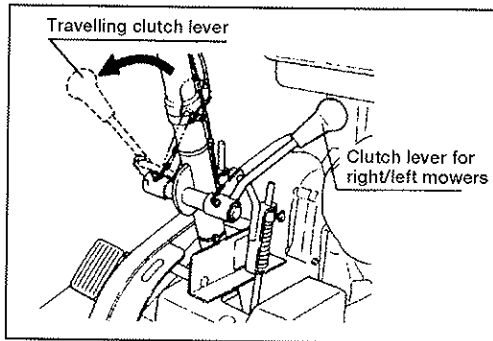
- ① Open the fuel cock, which is under the fuel tank.
- ② Move the throttle lever from the low-speed side slightly to the high-speed side.
- ③ Pull the choke button. Pull the button halfway for restarting, as necessary.
- ④ Pull the start rope hard.
- ⑤ After the engine has started, slowly return the choke button.
- ⑥ Warm up the engine at a slow speed for 1-2 minutes without a load.
- ⑦ Gradually move the throttle lever to high-speed side.

#### 2) Stop

- ① Move the throttle lever to the slow-speed, and continue idling for 1-2 minutes.
- ② Turn off the engine switch.
- ③ Close the fuel cock.

### 4-2 Operation of Travelling Clutch Lever

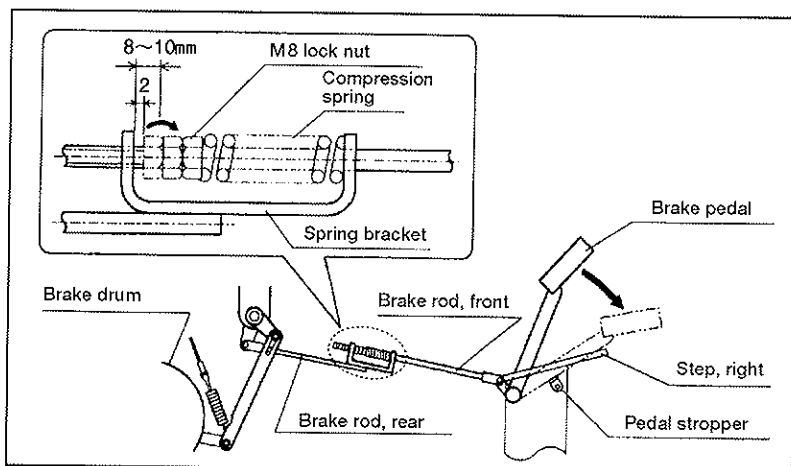
Pull the lever slowly to prevent sudden starting. Start the machine while allowing the belt to slip in the same way as clutch-slipping. (Fig. 5)



(Fig. 5)

### 4-3 Operation and Adjustment of Brake Pedal

To stop the machine, depress the brake pedal with your right foot until it hits the pedal stopper. If the pedal play increases or the brake does not work properly even if the pedal is depressed up to the stopper, shorten the rod by loosening the lock nut and screwing in the nut. Adjust it so that the clearance between the spring bracket and the double nut will be 8-10mm when the pedal is depressed up to the stopper. (If smaller than 8mm, the brake does not work properly, and if larger than 10mm, the brake may be damaged.) (Fig. 7)



(Fig. 6)

### 4-4 Operation and Adjustment of Diff-Lock Pedal

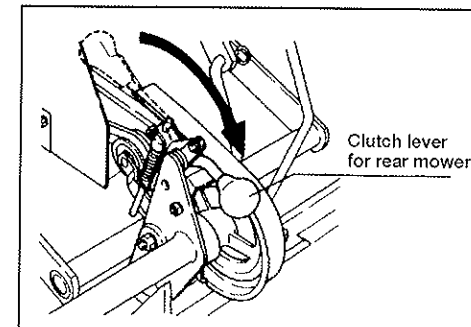
If the pedal on the left is depressed, the differential device is locked to enhance linearity, thus preventing slipping. If the pedal play increases, make adjustment with the adjusting bolts at both ends of the wire.

### 4-5 Operation of Clutch Lever for Right/Left Mowers

Pull this lever to rotate the right/left mowers. The right and left mowers rotate simultaneously.

### 4-6 Operation of Clutch Lever for Rear Mower

Pull this lever to rotate the rear mower.

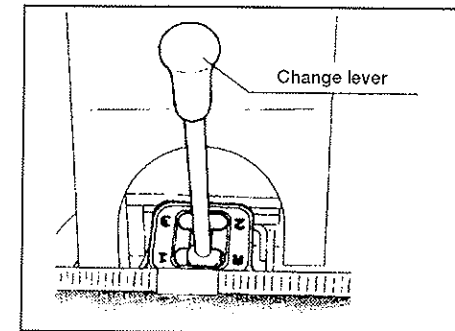


(Fig. 7)

### 4-7 Operation of Change Lever

A direct change system is adopted for the change lever. The speed change positions are shown in the figure.

- ◆ Do not change the lever position during travelling.



(Fig. 8)

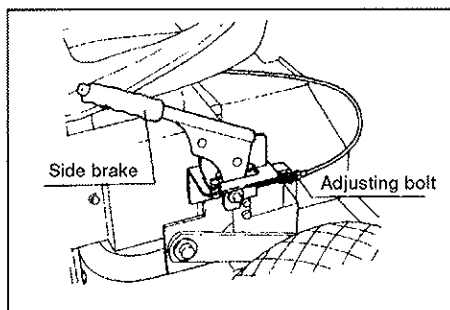
## 4-8 Operation and Adjustment of Side Brake

### 1) Operation

The side brake is located on the left side of the saddle. Pull it completely for parking.

While pressing the pushbutton, return the brake lever correctly.

- ◆ For parking on a hill, apply scotch in addition to pulling the side brake.



(Fig. 9)

### 2) Adjustment

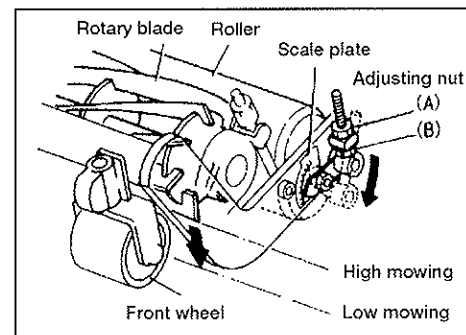
If the side brake does not work properly, make adjustment with the adjusting bolts at both ends of the wire. (Fig. 9)

## 4-9 Adjustment of Mowing Height

The mowing height is adjusted by moving up/down the roller.

- ① To increase mowing height  
→ Loosen the nut A and lower the roller.
- ② To decrease mowing height  
→ Loosen the nut B and raise the roller.

- ◆ The front wheel is provided to prevent the blade reel cylinder from damaging a convex portion of the lawn surface. It should not be grounded but should be raised 10-20mm.

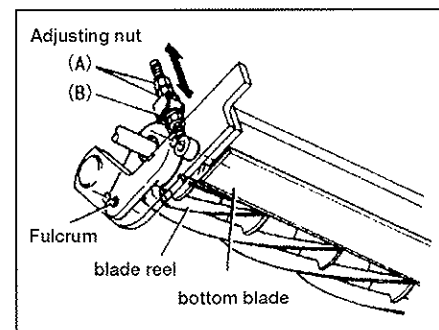


(Fig. 10)

## 4-10 Adjustment of Blade Engagement

To adjust the engagement between the blade reel cylinder and bottom blade, bring the edges entirely into slight contact with each other by using the adjusting nuts so that newspaper can be cut.

- ① If gap is created between edges  
→ Slightly loosen the nut B and tighten A.
  - ② If tight and difficult to turn  
→ Slightly loosen the nut A and tighten B.
- ◆ If the newspaper cannot be cut at some places even if the blades are in slight contact, grind them by lapping in good time.



(Fig. 11)

### 4-11 Adjustment of Belt Tension

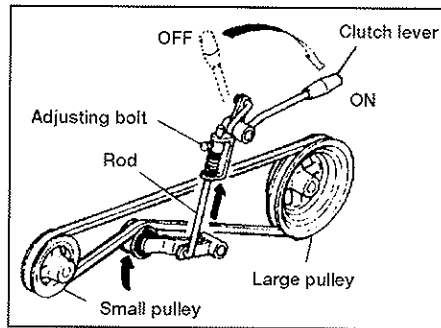
The belt tension is adjusted by changing the rod length with the adjusting bolt or nut.

#### 1) Belt tension clutch (3 places)

Loosen the adjusting bolt, and change the length of the rod.

◆ Make adjustment so that the belt and large pulley are stopped when the clutch lever is set to OFF.

- ① Traveling clutch
- ② Right/left mowers clutch
- ③ Rear Mower clutch

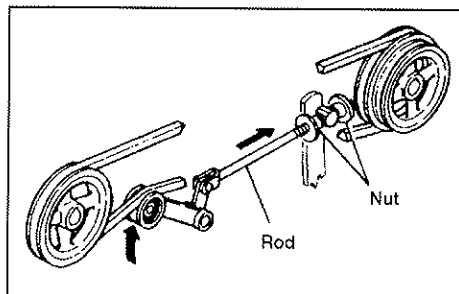


(Fig. 12)

#### 2) Portions where belt is always tensioned (2 places)

Loosen the adjusting nut, and change the length of the rod.

- ① Between mission pulley and large pulley on the intermediate shaft.
- ② Between outside pulleys of rear mower portion.



(Fig. 13)

## 5. Mowing Work



Do not put your hands and feet near the blade reel cylinder when it is rotating.

### 5-1 How to Operate

- ① Before starting the engine, check the following points.
  - The change lever must be in the neutral position.
  - The travelling clutch lever must be in the "OFF" position.
- ② Start the engine.
- ③ Pull the clutch levers of the right/left mowers and rear mower.
- ④ Slowly pull the travelling clutch lever in the same way as clutch-slipping.
- ◆ When the machine is started through the above operations, the blade reel cylinders rotate and the mowing work starts.

### 5-2 Adjustment before Work

- ① Check the sharpness of the blade. The blade is sharp if newspaper can be cut well.
- ② Try mowing to see if the mowing height of the three mowers is the same.

## 6. Method of Lapping

Lapping is intermediate finishing that is required temporarily before resharpening the blade. Both blade reel cylinder and bottom blade are simultaneously lapped by applying the abrasive while turning the blade reel cylinder in the direction opposite to the mowing direction.

#### 1) Things to be prepared (special-order products)

- ① Lapping machine ..... Baroness RM20
- ② Abrasive ..... FEL-PRO Clover Reel Sharpening Compound  
(genuine product)
- ③ Brush ..... Paint brush
- ④ Tool ..... 17 spanner, etc.
- ⑤ Others ..... Strips of newspaper, gloves, etc.



## 2) Procedure

For details, see the Handling Manual of Lapping Machine.



- ① Bring the blade reel cylinder and the bottom blade into slight contact with each other uniformly at right and left. Cut newspaper into strips and check which portion of the blade is dull.
  - ② Connect the lapping machine and the blade reel cylinder shaft of the mower.
  - ③ Rotate the blade reel cylinder in the direction opposite to the mowing direction and apply the abrasive with a brush to the portion where the newspaper was cut well.
  - ④ Idle the machine for a while, and then switch off the lapping machine when contact noise is no longer heard.
  - ⑤ Trialily cut the newspaper strips with the entire width of the blade reel cylinder, and note portions of cutting well and not well.
- ◆ Repeat the above steps ①~⑤ When the blade reel cylinder and bottom blade are uniformly engaged (brought into contact) with each other entirely, wash off the abrasive to finish the work.

**! DANGER**



- ◆ The edges are very sharp. Be sure to wear gloves when touching the blades.
- ◆ The blade reel cylinder must be rotated in the direction opposite to the mowing direction.
- ◆ It is dangerous when you apply the abrasive with a brush to the rotating blade reel cylinder. Be careful that your hand and brush will not be caught.
- ◆ When cutting the newspaper, pay attention to your fingers that will turn the blade reel cylinder.
- ◆ Should the abrasive enter your eyes, immediately wash your eyes with water. If the condition is serious, consult a doctor.

## 7. Maintenance and Inspection of Portions

Before checking, clean the machine body. The parts of operating portions and consumables should be periodically maintained and replaced as necessary.

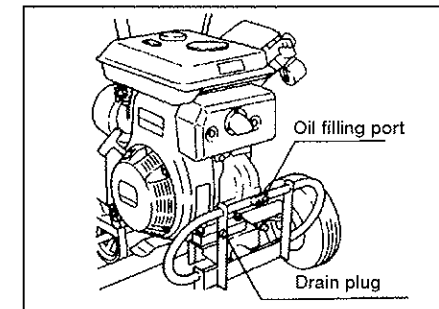
### 7-1 Change of Engine Oil



For details, see the Handling Manual for Engine.

If the engine oil is contaminated or running short or if poor-quality oil is used, the life of the engine will be extremely shortened. For changing oil, drain the oil through the drain plug when the engine is stopped and warm.

First time	after 20-hour operation
Second time and later	every 50-hour operation
Oil quantity	approx. 1.2 litres
SAE viscosity	SAE30 in summer, SAE20 in winter



(Fig. 14)

### 7-2 Cleaning of Air Cleaner



For details, see the Handling Manual for Engine.

Periodically clean the air cleaner so that clean air can be supplied to the engine.

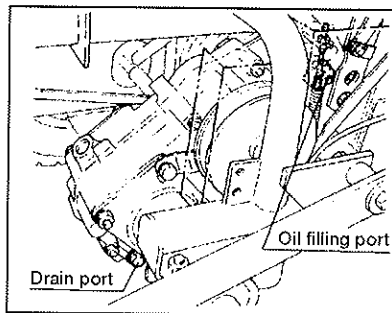
- ① Clean the urethane foam with white kerosene, and then immerse it in a mixture of three parts white kerosene and one part engine oil, and firmly squeeze before installing.
- ② Clean the element with white kerosene, immerse it in the mixture of three parts white kerosene and one part engine oil, and then shake/squeeze it before installing.

### 7-3 Change of Mission Oil

The oil filling port is located at the top on the right side of the mission case.

The drain port is located at the bottom on the right side of the mission case.

First time	after 50-hour operation
Second time and later	every 300 hours or every year
Oil quantity	approx. 2 litres
Specified oil	Oil No. 90 for automobile



(Fig. 15)

### 7-4 Oiling and Greasing 50h

Always supply oil to moving parts and periodically grease them with a grease nipple.

### 7-5 Inspection of Parts

Check and maintain bearings, various seals, belts, pulleys, wires, tires, plugs, etc. periodically, and replace parts as necessary.

### 7-6 Maintenance List

◆Do maintenance earlier than the time shown below as necessary.

Maintenance item		Hourly	50H	200H	Yearly
Engine	Inspection/supply of engine oil	○			
	Change of engine oil		○		
	Cleaning of ignition plugs		○		
	Cleaning of air cleaner		○		
	Cleaning of fuel strainer			○	
	Adjustment of ignition plug clearance			○	
	Removal of cylinder head carbon				○
	Cleaning of carburetor				○
	Checking/fitting of inlet valve/exhaust valve				○
	Overhaul				○
Machine	Inspection of tire air pressure	○			
	Inspection of looseness of screws	○			
	Inspection of fuel level	○			
	Inspection of oil leakage	○			
	Inspection of cutting quality of blade	○			
	Oil supply to sliding portions		○		
	Inspection of belt tension		○		
	Adjustment of wires		○		

Table 2

## 8. Inspection for Long Storage

For the engine, see the Handling Manual of Engine.



### 1) Changing oil

Change the engine oil/mission oil, etc.

### 2) Oiling

Supply oil to moving parts, and apply grease to the blade reel cylinder and bottom blade to prevent rusting.



### 3) Draining fuel

If the engine is not used for one month or longer, drain the fuel from the fuel tank and carburetor to prevent defective starting and operation due to deterioration of the fuel.

### 4) Air pressure of tires

Set the air pressure slightly higher than the standard, and place the tires on plates to protect them from humidity.

### 5) Storage place

Cover the machine and store it at a dry place not exposed to rain.

## 9. Specifications

### 1) Mowers

Number of units	3
Mowing width	188cm
Reel diameter	16.3cm
Reel width	Right/left 66cm, rear 77cm
Number of reel blades	7 (5 optional)
Mowing height	13-50mm

Table 3

### 2) Engine

Name	Robin EH30B
Type	Air-cooled 4-cycle vertical OHV type gasoline engine
Total displacement	291cc
Continuous rated output	7.8PS/1800rpm
Maximum output	9.0PS/1800rpm
Maximum torque	3.9kgm/1250rpm
Fuel consumption	230g/PS <sub>h</sub> (at continuous rated output)
Specified lubricating oil	Engine oil for automobile (SAE30 API CF/SF)
Quantity of lubricating oil	1.2 litres
Fuel tank capacity	6 litres (lead-free gasoline for automobile)

Table 4

### 3) Machine

Number of speeds	Forward : 3 speeds, backward : 1 speed
Speed	1st speed : 3.1km/h
	2nd speed : 6.4km/h
	3rd speed : 9.4km/h
	Back : 3.1km/h
Grade ability	20
Travelling clutch	Belt tension type
Brake	Internal expanding type 5 inches
Wheel	Front 4.00-5
	Rear 18x8.50-8
Minimum turning radius	230cm
Total length	215cm
Total width	208cm
Total height	102cm
Total weight	350kg (with mowers)
Efficiency	84a/h (mowing width x 2nd speed x 0.7)

Table 5



## Parts Catalog

### Note

#### (Inquiry about This Machine)

Since the type may be changed sequentially, inform us also of the machine type and No.  
The contents of the catalog are subject to change without notice.

#### (Ordering Parts)

Parts are controlled with a computer. To prevent shipping of wrong parts,  
inform us of the catalog No., code No., and part name when ordering parts.

Example	Catalog No.	Code No.	Part name	Quantity
	9-2	LM180A-0802Z3	Mission pulley	1

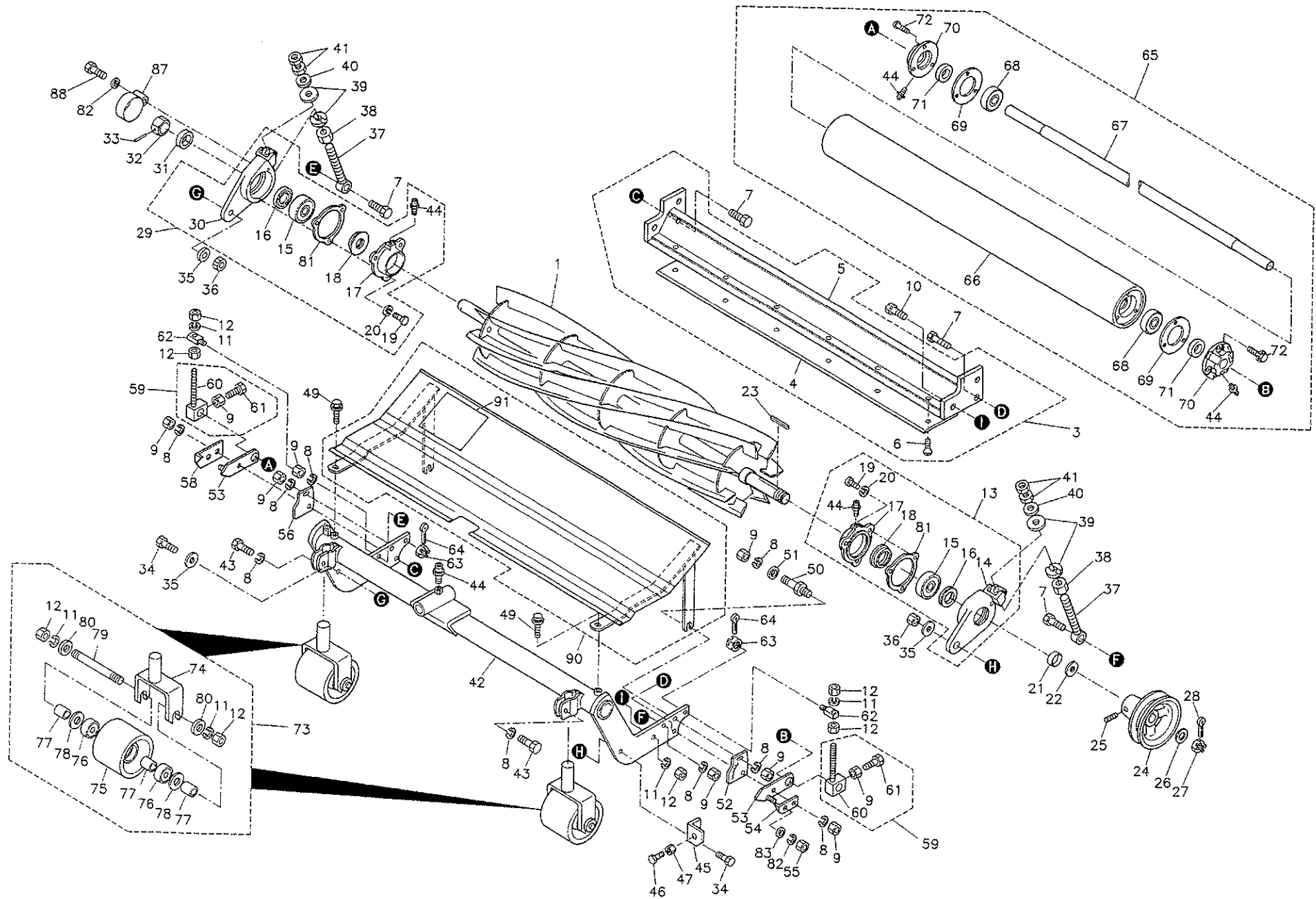


Catalog No.	Code No.	Part Name	Qty /Unit	Common Part	Retail Price
1-1	K 2 8 1 8 5 0 L 7 A R	Blade reel cylinder 660-7L	1		
1-2	K 2 8 1 8 5 0 L 5 A R	Blade reel cylinder 660-5L (option)	1		
1-3	K 8 0 2 2 0 0 0 0 2 0	180 right-left knife ass'y	1	○	
1-4	K 2 5 1 0 0 0 0 0 3 0	7 bottom blade 85-662	1	○	
1-5	K 7 4 4 2 0 0 0 0 6 R	Bottom blade mount 732	1	○	
1-6	K 0 0 7 1 0 0 0 0 9 2	10 heat-treated-countersunk head screw 20	6	○	
1-7	K 0 0 0 0 1 0 0 3 5 2	10 bolt 35	4	○	
1-8	K 0 2 0 0 1 0 0 0 0 2	10S washer	10	○	
1-9	K 0 1 0 0 1 0 0 0 0 2	10 nut	10	○	
1-10	K 0 0 0 0 1 2 0 3 5 2	12 bolt 35	2	○	
1-11	K 0 2 0 0 1 2 0 0 0 2	12S washer	6	○	
1-12	K 0 1 0 0 1 2 0 0 0 2	12 nut	10	○	
1-13	L M 1 8 0 B - 0 1 0 6 Z 0	Reel bracket metal left B Ass'y	1set	○	
1-14	L M 1 8 0 A - 0 1 0 9 Z 2	Reel bracket metal left B	1	○	
1-15	K 0 6 0 2 0 6 3 0 4 0	Bearing 6304Z	2	○	
1-16	K 0 8 6 0 0 0 0 0 5 0	Dustproof seal	2	○	
1-17	K 6 9 0 3 0 0 0 0 4 2	Housing cover	2	○	
1-18	K 0 8 2 2 5 4 2 0 8 0	Oil seal MHSA25428	2	○	
1-19	K 0 0 0 0 0 6 0 1 5 2	6 bolt 15	6	○	
1-20	K 0 2 0 0 0 6 0 0 0 2	6S washer	6	○	
1-21	K 6 2 1 2 0 0 0 1 6 2	20.2 STKM collar 25.4 4.75	1	○	
1-22	K 5 0 3 0 5 2 0 4 0 0	0.5C2801P washer 2040	1	○	
1-23	K 0 5 5 0 0 0 0 0 5 0	5 x 5 x 42 special key	1	○	
1-24	K 2 4 2 0 0 0 0 0 1 D	B1V pulley 20134	1	○	
1-25	K 0 0 2 3 0 8 0 0 8 1	8 hollow set 8	2	○	
1-26	K 5 0 7 3 2 2 0 4 0 2	3.2 SPHC washer 2040	1	○	
1-27	K 0 1 7 0 0 0 0 0 1 2	20 slotted special nut	1	○	
1-28	K 0 3 0 0 0 3 2 3 6 2	3.2 cotter pin 36	1	○	
1-29	L M 1 8 0 B - 0 1 1 3 Z 0	Reel bracket metal right A Ass'y	1set	○	
1-30	L M 1 8 0 A - 0 1 1 0 Z 2	Reel bracket metal right A	1	○	
1-31	K 4 0 3 1 0 0 0 2 4 0	Waterproof cap	1		
1-32	K 6 0 8 0 0 0 0 0 3 2	Lapping shaft	1		
1-33	K 0 3 2 0 0 3 0 2 5 1	3 spring pin 25	1	○	
1-34	L M 1 8 0 A - 0 1 2 0 Z 2	Shaft bolt	2	○	
1-35	K 5 0 7 3 2 1 5 3 0 2	3.2 PHC washer 14.530	3	○	
1-36	K 0 1 4 5 1 4 0 0 0 2	14U nut P1.5	2	○	
1-37	K 6 5 1 1 0 0 0 0 9 2	Cutter adjusting bolt 100	2	○	
1-38	L M 1 8 0 A - 0 1 3 5 Z 2	M10 fine nut	2	○	
1-39	K 6 5 0 0 0 0 0 1 0 2	5SS41 washer 10.522	4	○	
1-40	K 5 0 5 1 0 1 0 2 0 0	1C5191P washer 1020	2	○	
1-41	K 0 1 0 6 1 0 0 0 0 2	10 nut P1	4	○	
1-42	L M 1 8 0 B - 0 1 4 0 A R	Mower frame left	1	○	
1-43	K 0 0 1 0 1 0 0 2 5 2	10 heat-treated bolt 25	2	○	
1-44	K 1 4 4 0 0 0 0 0 1 0	Grease nipple	5	○	
1-45	L M 1 8 0 A - 1 0 1 5 A 2	Scraper for left mower	1	○	

Catalog No.	Code No.	Part Name	Qty /Unit	Common Part	Retail Price
1-46	K 0 0 0 0 0 6 0 4 0 2	6 bolt 40	1	○	
1-47	K 0 1 0 0 0 6 0 0 0 2	6 nut	1	○	
1-48					
1-49	K 0 0 0 7 0 8 0 2 0 2	8 bolt 20SW	2	○	
1-50	L M 1 8 0 A - 0 1 4 7 Z 2	Reel cover bolt	2	○	
1-51	K 5 0 0 0 1 0 0 0 0 2	10 Washer	2	○	
1-52	L M 1 8 0 B - 0 1 6 0 Z 0	Mowing height scale plate left	1	○	
1-53	L M 1 8 0 B - 0 1 5 0 A 2	Mowing height adjusting plate	2	○	
1-54	L M 1 8 0 A - 0 2 5 1 Z 2	Mowing height adjusting needle left	1	○	
1-55	K 0 1 0 0 0 8 0 0 0 2	8 nut	2	○	
1-56	L M 1 8 0 B - 0 1 6 2 Z 0	Mowing height scale plate right	1	○	
1-57					
1-58	L M 1 8 0 A - 0 2 5 2 Z 2	Mowing height adjusting needle right	1	○	
1-59	L M 1 8 0 B - 0 1 5 3 Z 0	Mowing height adjusting screw Ass'y	2sets	○	
1-60	L M 1 8 0 B - 0 1 5 4 Z 2	Mowing height adjusting screw	2	○	
1-61	K 0 0 0 0 1 0 0 2 5 2	10 bolt 25	2	○	
1-62	L M 1 8 0 B - 0 1 5 6 Z 2	Fixed shaft	2	○	
1-63	K 0 1 2 4 1 2 0 0 0 2	12 slotted nut low	2	○	
1-64	K 0 3 0 0 0 3 2 2 5 2	3.2 cotter pin 25	2	○	
1-65	L M 1 8 0 B - 0 1 5 8 A 0	Roller assy	1set	○	
1-66	K 7 4 0 0 0 0 0 1 6 D	76.2 roller 674	1		
1-67	L M 1 8 0 B - 0 1 5 9 Z 0	Roller shaft	1	○	
1-68	K 0 6 0 2 0 6 2 0 3 0	Bearing 6203Z	2		
1-69	K 4 0 1 5 1 3 6 6 5 0	1 fiber 3665	2		
1-70	K 6 8 1 0 0 0 0 0 7 0	Seal housing	2		
1-71	K 0 8 2 1 7 3 0 0 8 0	Oil seal MHSA1730080	2		
1-72	K 0 0 0 6 0 6 0 1 5 2	6 bolt 15S	6		
1-73	L M 1 8 0 B - 1 2 0 1 Z 0	Front roller Ass'y	2sets	○	
1-74	L M 1 8 0 A - 1 2 0 4 Z 2	Front wheel bracked metal	2	○	
1-75	K 6 8 0 9 0 0 0 0 2 0	Roller 76 66	2	○	
1-76	K 0 6 0 8 0 6 2 0 1 0	Bearing 62012RS	4	○	
1-77	K 6 2 1 1 0 0 0 0 5 2	12.7 SGP collar 17.3163	6	○	
1-78	K 5 0 3 0 5 1 2 3 0 0	0.5 C2801P washer 1230	4	○	
1-79	K 0 0 7 0 0 0 0 0 3 2	12 double-end stud 115	2	○	
1-80	K 5 0 0 0 1 2 0 0 0 2	12 washer	4	○	
1-81	K 4 0 1 1 0 0 0 1 5 0	Packing	2	○	
1-82	K 0 2 0 0 0 8 0 0 0 2	8S washer	3	○	
1-83	K 5 0 0 0 0 8 0 0 0 2	8 washer	2	○	
1-84					
1-85					
1-86					
1-87	L M 1 8 0 B - 0 1 6 4 Z 2	Shaft cover	1		
1-88	K 0 0 0 0 0 8 0 4 0 2	8 bolt 40	1		
1-89					
1-90	L M 1 8 0 B S 0 1 8 0 A 0	Reel cover left for export COMP	1		
1-91	K 4 2 0 5 0 0 1 2 8 0	DANGER Mark	1		

LM180BS

## 2 Right Mower Portion

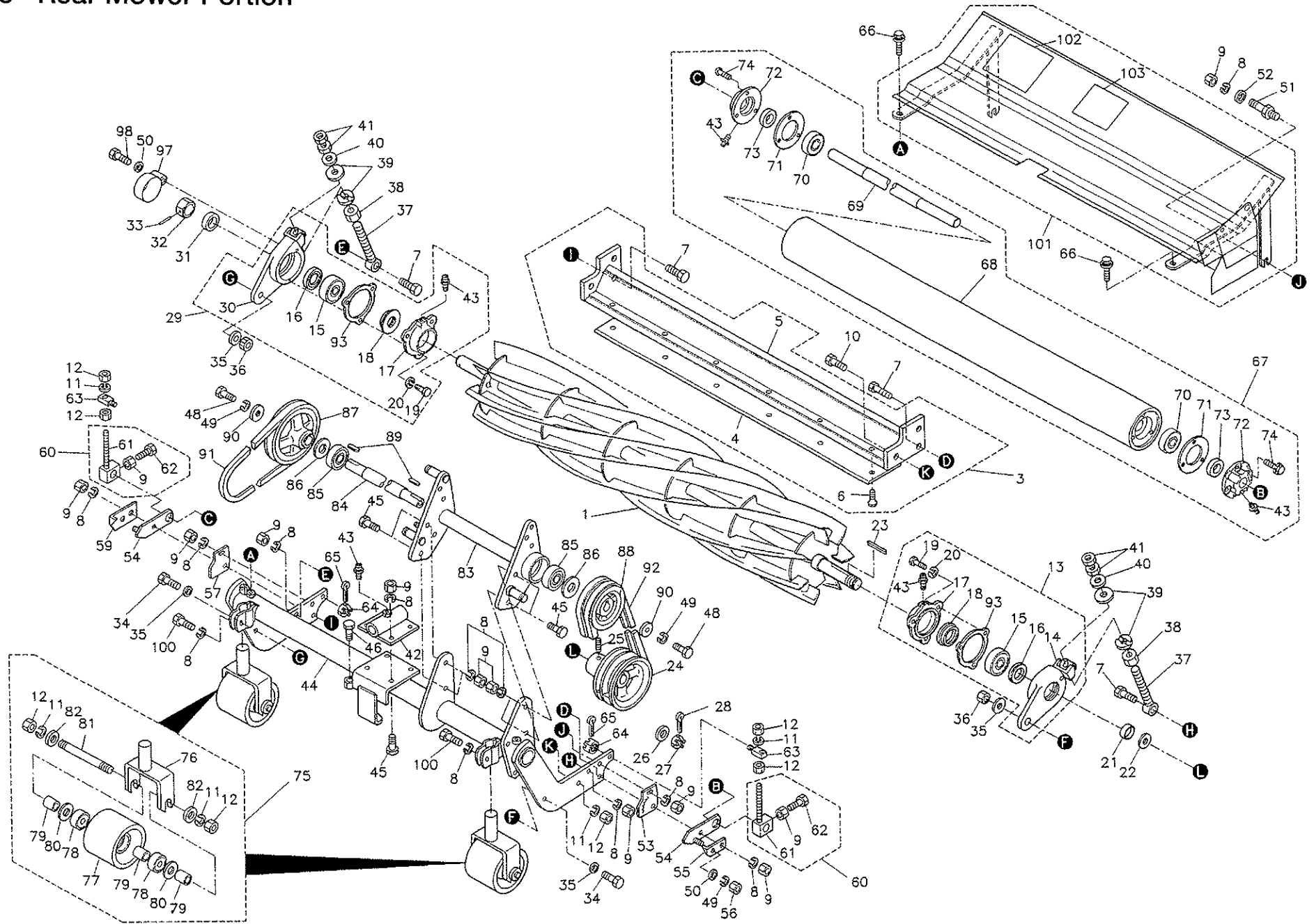




Catalog No.	Code No.	Part Name	Qty /Unit	Common Part	Retail Price
2-1	K 2 8 1 8 5 0 R 7 A R	Blade reel cylinder 660-7R	1		
2-2	K 2 8 1 8 5 0 R 5 A R	Blade reel cylinder 660-5R (option)	1		
2-3	K 8 0 2 2 0 0 0 0 2 0	180 right-left knife Ass'y	1	○	
2-4	K 2 5 1 0 0 0 0 0 3 0	7 bottom blade 85-662	1	○	
2-5	K 7 4 4 2 0 0 0 0 6 R	Bottom blade mount 732	1	○	
2-6	K 0 0 7 1 0 0 0 0 9 2	10 heat-treated-countersunk head screw 20	6	○	
2-7	K 0 0 0 0 1 0 0 3 5 2	10 bolt 35	4	○	
2-8	K 0 2 0 0 1 0 0 0 0 2	10S washer	10	○	
2-9	K 0 1 0 0 1 0 0 0 0 2	10 nut	10	○	
2-10	K 0 0 0 0 1 2 0 3 5 2	12 bolt 35	2	○	
2-11	K 0 2 0 0 1 2 0 0 0 2	12S washer	6	○	
2-12	K 0 1 0 0 1 2 0 0 0 2	12 nut	10	○	
2-13	L M 1 8 0 B - 0 1 0 7 Z 0	Reel bracket metal left A Ass'y	1set	○	
2-14	L M 1 8 0 A - 0 1 0 8 Z 2	Reel bracket metal left A	1	○	
2-15	K 0 6 0 2 0 6 3 0 4 0	Bearing 6304Z	2	○	
2-16	K 0 8 6 0 0 0 0 0 5 0	Dustproof seal	2	○	
2-17	K 6 9 0 3 0 0 0 0 4 2	Housing cover	2	○	
2-18	K 0 8 2 2 5 4 2 0 8 0	Oil seal MHSA25428	2	○	
2-19	K 0 0 0 0 0 6 0 1 5 2	6 bolt 15	6	○	
2-20	K 0 2 0 0 0 6 0 0 0 2	6S washer	6	○	
2-21	K 6 2 1 2 0 0 0 1 6 2	20.2 STKM collar 25.4 4.75	1	○	
2-22	K 5 0 3 0 5 2 0 4 0 0	0.5 C2801P washer 2040	1	○	
2-23	K 0 5 5 0 0 0 0 0 5 0	5 x 5 x 42 special key	1	○	
2-24	K 2 4 2 0 0 0 0 0 1 2	B1V pulley 20134	1	○	
2-25	K 0 0 2 3 0 8 0 0 8 1	8 hollow set 8	2	○	
2-26	K 5 0 7 3 2 2 0 4 0 2	3.2 SPHC washer 2040	1	○	
2-27	K 0 1 7 0 0 0 0 0 1 2	20 slotted special nut	1	○	
2-28	K 0 3 0 0 0 3 2 3 6 2	3.2 cotter pin 36	1	○	
2-29	L M 1 8 0 B - 0 1 1 2 Z 0	Reel bracket metal right B Ass'y	1set	○	
2-30	L M 1 8 0 A - 0 1 1 1 Z 2	Reel bracket metal right B	1	○	
2-31	K 4 0 3 1 0 0 0 2 4 0	Waterproof cap	1		
2-32	K 6 0 8 0 0 0 0 0 3 2	Lapping shaft	1		
2-33	K 0 3 2 0 0 3 0 2 5 1	3 spring pin 25	1	○	
2-34	L M 1 8 0 A - 0 1 2 0 Z 2	Shaft bolt	2	○	
2-35	K 5 0 7 3 2 1 5 3 0 2	3.2 PHC washer 14.530	3	○	
2-36	K 0 1 4 5 1 4 0 0 0 2	14U nut P1.5	2	○	
2-37	K 6 5 1 1 0 0 0 0 9 2	Cutter adjusting bolt 100	2	○	
2-38	L M 1 8 0 A - 0 1 3 5 Z 2	M10 fine nut	2	○	
2-39	K 6 5 0 0 0 0 0 1 0 2	5SS41 washer 10.522	4	○	
2-40	K 5 0 5 1 0 1 0 2 0 0	1C5191P washer 1020	2	○	
2-41	K 0 1 0 6 1 0 0 0 0 2	10 nut P1	4	○	
2-42	L M 1 8 0 B - 0 1 4 1 A R	Mower frame right	1	○	
2-43	K 0 0 1 0 1 0 0 2 5 2	10 heat-treated bolt 25	2	○	
2-44	K 1 4 4 0 0 0 0 0 1 0	Grease nipple	5	○	
2-45	L M 1 8 0 A - 1 0 2 3 A 2	Scraper for right mower	1	○	

Catalog No.	Code No.	Part Name	Qty /Unit	Common Part	Retail Price
2-46	K 0 0 0 0 0 6 0 4 0 2	6 bolt 40	1	○	
2-47	K 0 1 0 0 0 6 0 0 0 2	6 nut	1	○	
2-48					
2-49	K 0 0 0 7 0 8 0 2 0 2	8 bolt 20SW	2	○	
2-50	L M 1 8 0 A - 0 1 4 7 Z 2	Reel cover bolt	2	○	
2-51	K 5 0 0 0 1 0 0 0 0 2	10 washer	2	○	
2-52	L M 1 8 0 B - 0 1 6 0 Z 0	Mowing height scale plate left	1	○	
2-53	L M 1 8 0 B - 0 1 5 0 A 2	Mowing height adjusting plate	2	○	
2-54	L M 1 8 0 A - 0 2 5 1 Z 2	Mowing height adjusting needle left	1	○	
2-55	K 0 1 0 0 0 8 0 0 0 2	8 nut	2	○	
2-56	L M 1 8 0 B - 0 1 6 2 Z 0	Mowing height scale plate right	1	○	
2-57					
2-58	L M 1 8 0 A - 0 2 5 2 Z 2	Mowing height adjusting needle right	1	○	
2-59	L M 1 8 0 B - 0 1 5 3 Z 0	Mowing height adjusting screw Ass'y	2sets	○	
2-60	L M 1 8 0 B - 0 1 5 4 Z 2	Mowing height adjusting screw	2	○	
2-61	K 0 0 0 0 1 0 0 2 5 2	10 bolt 25	2	○	
2-62	L M 1 8 0 B - 0 1 5 6 Z 2	Fixed shaft	2	○	
2-63	K 0 1 2 4 1 2 0 0 0 2	12 Slotted nut low	2	○	
2-64	K 0 3 0 0 0 3 2 2 5 2	3.2 cotter pin 25	2	○	
2-65	L M 1 8 0 B - 0 1 5 8 A 0	Roller assy	1set	○	
2-66	K 7 4 0 0 0 0 0 1 6 D	76.2 roller 674	1		
2-67	L M 1 8 0 B - 0 1 5 9 Z 0	Roller shaft	1	○	
2-68	K 0 6 0 2 0 6 2 0 3 0	Bearing 6203Z	2		
2-69	K 4 0 1 5 1 3 6 6 5 0	1 fiber 3665	2		
2-70	K 6 8 1 0 0 0 0 0 7 0	Seal housing	2		
2-71	K 0 8 2 1 7 3 0 0 8 0	Oil seal MHSA1730080	2		
2-72	K 0 0 0 6 0 6 0 1 5 2	6 bolt 15S	6		
2-73	L M 1 8 0 B - 1 2 0 1 Z 0	Front roller Ass'y	2sets	○	
2-74	L M 1 8 0 A - 1 2 0 4 Z 2	Front wheel bracket metal	2	○	
2-75	K 6 8 0 9 0 0 0 0 2 0	Roller 76 66	2	○	
2-76	K 0 6 0 8 0 6 2 0 1 0	Bearing 62012RS	4	○	
2-77	K 6 2 1 1 0 0 0 0 5 2	12.7SGP collar 17.3 16.3	6	○	
2-78	K 5 0 3 0 5 1 2 3 0 0	0.5C2801P washer 1230	4	○	
2-79	K 0 0 7 0 0 0 0 0 3 2	12 double-end stud 115	2	○	
2-80	K 5 0 0 0 1 2 0 0 0 2	12 Washer	4	○	
2-81	K 4 0 1 1 0 0 0 1 5 0	Packing	2	○	
2-82	K 0 2 0 0 0 8 0 0 0 2	8S washer	3	○	
2-83	K 5 0 0 0 0 8 0 0 0 2	8 washer	2	○	
2-84					
2-85					
2-86					
2-87	L M 1 8 0 B - 0 1 6 4 Z 2	Shaft cover	1		
2-88	K 0 0 0 0 0 8 0 4 0 2	8 bolt 40	1		
2-89					
2-90	L M 1 8 0 B S 2 3 8 0 A 0	Reel cover right for export COMP	1		
2-91	K 4 2 0 5 0 0 1 2 8 0	DANGER Mark	1		

### 3 Rear Mower Portion

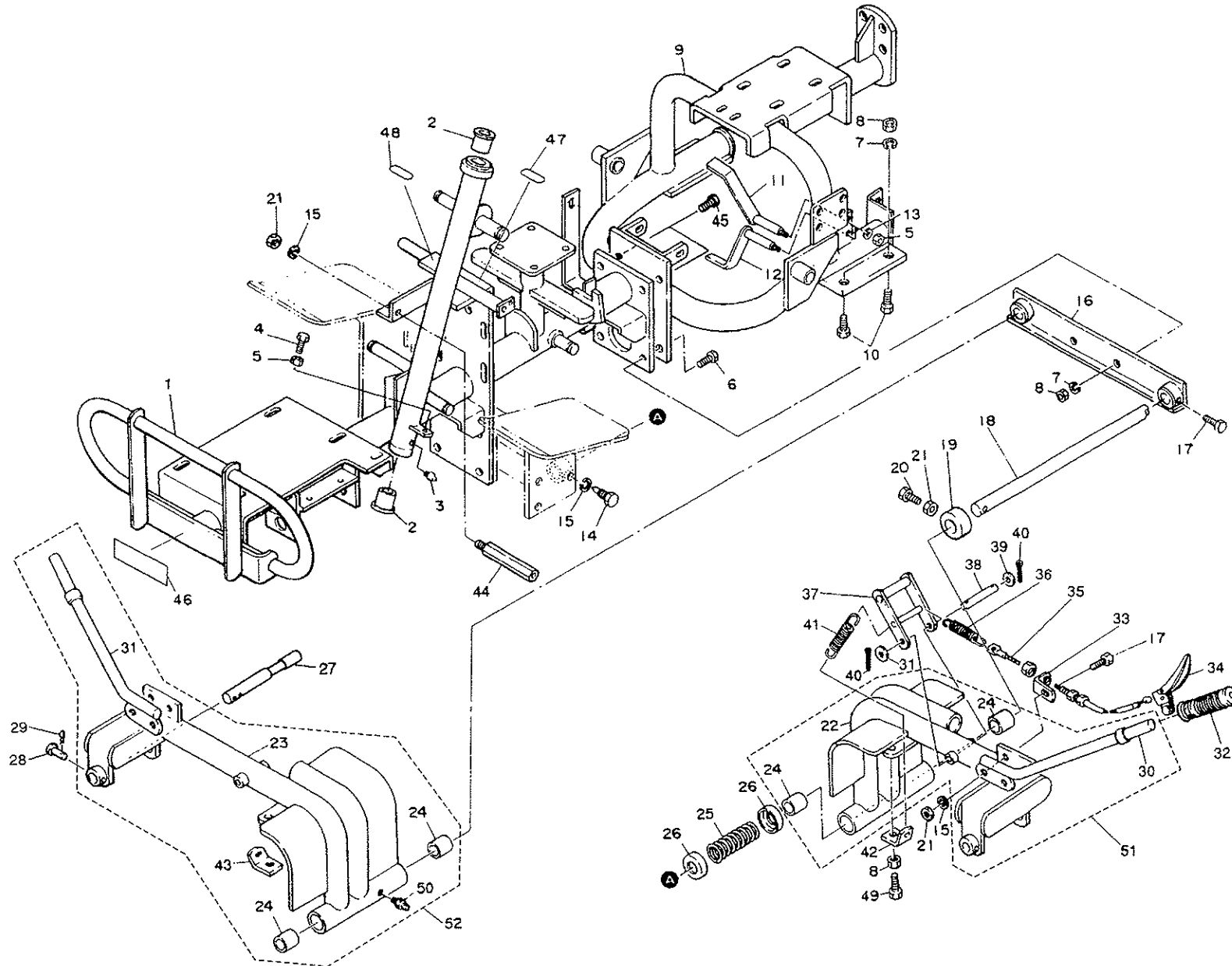


Catalog No.	Code No.	Part Name	Qty /Unit	Common Part	Retail Price
3-1	K 2 8 1 8 0 2 0 7 B R	Blade reel cylinder 766-7	1		
3-2	K 2 8 1 8 0 2 0 5 B R	Blade reel cylinder 766-5 (option)	1		
3-3	K 8 0 2 2 0 0 0 0 3 0	180 rear knife Ass'y	1	○	
3-4	K 2 5 1 0 0 0 0 0 2 0	7 Bottom blade 85-770-51	1	○	
3-5	K 7 4 4 2 0 0 0 0 7 R	Bottom blade mount 840	1	○	
3-6	K 0 0 7 1 0 0 0 0 9 2	10 heat-treated - countersunk head screw 20	7	○	
3-7	K 0 0 0 0 1 0 0 3 5 2	10 bolt 35	4	○	
3-8	K 0 2 0 0 1 0 0 0 0 2	10S washer	16	○	
3-9	K 0 1 0 0 1 0 0 0 0 2	10 nut	16	○	
3-10	K 0 0 0 0 1 2 0 3 5 2	12 bolt 35	2	○	
3-11	K 0 2 0 0 1 2 0 0 0 2	12S washer	6	○	
3-12	K 0 1 0 0 1 2 0 0 0 2	12 nut	11	○	
3-13	L M 1 8 0 B - 0 1 0 7 Z 0	Reel bracket metal left A Ass'y	1set	○	
3-14	L M 1 8 0 A - 0 1 0 8 Z 2	Reel bracket metal left A	1	○	
3-15	K 0 6 0 2 0 6 3 0 4 0	Bearing 6304Z	2	○	
3-16	K 0 8 6 0 0 0 0 0 0 5 0	Dustproof seal	2	○	
3-17	K 6 9 0 3 0 0 0 0 4 2	Housing cover	2	○	
3-18	K 0 8 2 2 5 4 2 0 8 0	Oil seal MHSA25428	2	○	
3-19	K 0 0 0 0 6 0 1 5 2	6 bolt 15	6	○	
3-20	K 0 2 0 0 0 6 0 0 0 2	6S washer	6	○	
3-21	K 6 2 1 2 0 0 0 1 6 2	20.2 STKM collar 25.4 4.75	1	○	
3-22	K 5 0 3 0 5 2 0 4 0 0	0.5 C2801P washer 2040	1	○	
3-23	K 0 5 5 0 0 0 0 0 5 0	5 x 5 x 42 special key	1	○	
3-24	L M 1 8 0 A - 0 2 2 5 B D	Rear reel pulley	1	○	
3-25	K 0 0 2 3 0 8 0 0 8 1	8 hollow set 8	2	○	
3-26	K 5 0 7 3 2 2 0 4 0 2	3.2 SPHC washer 2040	1	○	
3-27	K 0 1 7 0 0 0 0 0 1 2	20 Slotted special nut	1	○	
3-28	K 0 3 0 0 0 3 2 3 6 2	3.2 cotter pin 36	1	○	
3-29	L M 1 8 0 B - 0 1 1 2 Z 0	Reel bracket metal right B Ass'y	1set	○	
3-30	L M 1 8 0 A - 0 1 1 1 Z 2	Reel bracket metal right B	1	○	
3-31	K 4 0 3 1 0 0 0 2 4 0	Waterproof cap	1		
3-32	K 6 0 8 0 0 0 0 0 3 2	Lapping shaft	1		
3-33	K 0 3 2 0 0 3 0 2 5 1	3 spring pin 25	1	○	
3-34	L M 1 8 0 A - 0 1 2 0 Z 2	Shaft bolt	2	○	
3-35	K 5 0 7 3 2 1 5 3 0 2	3.2 PHC washer 14.530	4	○	
3-36	K 0 1 4 5 1 4 0 0 0 2	14U nut P1.5	2	○	
3-37	K 6 5 1 1 0 0 0 0 9 2	Cutter adjusting bolt 100	2	○	
3-38	L M 1 8 0 A - 0 1 3 5 Z 2	M10 fine nut	2	○	
3-39	K 6 5 0 0 0 0 1 0 2	5SS41 washer 10.522	4	○	
3-40	K 5 0 5 1 0 1 0 2 0 0	1C5191P washer 1020	2	○	
3-41	K 0 1 0 6 1 0 0 0 0 2	10 nut P1	4	○	
3-42	L M 1 8 0 A - 0 2 9 6 A R	Rear mower oscillating metal part	1	○	
3-43	K 1 4 4 0 0 0 0 0 1 0	Grease nipple	5	○	
3-44	L M 1 8 0 B - 0 2 4 1 B R	Mower frame rear	1	○	
3-45	K 0 0 0 0 1 0 0 3 0 2	10 bolt 30	4	○	
3-46	K 0 0 0 0 1 2 0 4 0 2	12 bolt 40	1	○	
3-47					
3-48	K 0 0 0 0 0 8 0 2 0 2	8 bolt 15	2	○	
3-49	K 0 2 0 0 0 8 0 0 0 2	8S washer	3	○	
3-50	K 5 0 0 0 0 8 0 0 0 2	8 washer	2	○	
3-51	L M 1 8 0 A - 0 1 4 7 Z 2	Reel cover bolt	2	○	

Catalog No.	Code No.	Part Name	Qty /Unit	Common Part	Retail Price
3-52	K 5 0 0 0 1 0 0 0 0 2	10 washer	2		
3-53	L M 1 8 0 B - 0 1 6 0 Z 0	Mowing height scale plate left	1	○	
3-54	L M 1 8 0 B - 0 2 6 3 A 2	Mowing height adjusting plate rear	2	○	
3-55	L M 1 8 0 A - 0 2 5 1 Z 2	Mowing height adjusting needle left	1	○	
3-56	K 0 1 0 0 0 8 0 0 0 2	8 nut	2	○	
3-57	L M 1 8 0 B - 0 1 6 2 Z 0	Mowing height scale plate right	1	○	
3-58					
3-59	L M 1 8 0 A - 0 2 5 2 Z 2	Mowing height adjusting needle right	1	○	
3-60	L M 1 8 0 B - 0 1 5 3 Z 0	Mowing height adjusting screw Ass'y	2sets	○	
3-61	L M 1 8 0 B - 0 1 5 4 Z 2	Mowing height adjusting screw	2	○	
3-62	K 0 0 0 0 1 0 0 2 5 2	10 bolt 25	4	○	
3-63	L M 1 8 0 B - 0 1 5 6 Z 2	Fixed shaft	2	○	
3-64	K 0 1 2 4 1 2 0 0 0 2	12 slotted nut low	2	○	
3-65	K 0 3 0 0 0 3 2 2 5 2	3.2 cotter pin 25	2	○	
3-66	K 0 0 0 7 0 8 0 2 0 3	8 bolt 20SW	2	○	
3-67	L M 1 8 0 B - 0 2 5 8 A 0	Rear roller Ass'y	1set	○	
3-68	K 7 4 0 0 0 0 0 1 8 D	76.2 roller 782	1		
3-69	L M 1 8 0 B - 0 2 5 9 Z 0	Rear roller shaft	1	○	
3-70	K 0 6 0 2 0 6 2 0 3 0	Bearing 6203Z	2	○	
3-71	K 4 0 1 5 1 3 6 6 5 0	1 fiber 3665	2		
3-72	K 6 8 1 0 0 0 0 0 7 0	Seal housing	2		
3-73	K 0 8 2 1 7 3 0 0 8 0	Oil seal MHSA1730080	2		
3-74	K 0 0 0 6 0 6 0 1 5 2	6 bolt 15S	6		
3-75	L M 1 8 0 B - 1 2 0 1 Z 0	Front roller Ass'y	2sets		
3-76	L M 1 8 0 A - 1 2 0 4 Z 2	Front wheel bracket metal	2	○	
3-77	K 6 8 0 9 0 0 0 0 2 0	Roller 76 66	2	○	
3-78	K 0 6 0 8 0 6 2 0 1 0	Bearing 62012RS	4	○	
3-79	K 6 2 1 1 0 0 0 0 5 2	12.7 SGP collar 17.3 16.3	6	○	
3-80	K 5 0 3 0 5 1 2 3 0 0	0.5 C2801P washer 1230	4	○	
3-81	K 0 0 7 0 0 0 0 0 3 2	12 double-end stud 115	2	○	
3-82	K 5 0 0 0 1 2 0 0 0 2	12 washer	4	○	
3-83	L M 1 8 0 A - 0 2 7 1 B R	Rear mower bearing	1	○	
3-84	L M 1 8 0 A - 0 2 7 2 A 0	Rear mower transmission shaft	1	○	
3-85	K 0 6 0 4 0 6 2 0 4 0	Bearing 6204ZZ	2	○	
3-86	K 5 0 3 0 5 2 0 4 3 0	0.5 C2801P washer 2043	2	○	
3-87	L M 1 8 0 A - 0 2 7 5 Z 2	Rear mower transmission pulley	1	○	
3-88	L M 1 8 0 A - 0 2 7 6 Z D	Rear reel transmission pulley	1	○	
3-89	K 0 5 0 0 5 0 5 2 5 0	5 double round key 525	2	○	
3-90	K 5 0 7 3 2 0 8 3 2 2	3.2 SPHC washer 832	2	○	
3-91	K 2 3 4 2 0 5 8 0 0 0	V belt OLB58	1	○	
3-92	K 2 3 2 3 0 2 9 0 0 0	V belt GLA29	2	○	
3-93	K 4 0 1 1 0 0 0 1 5 0	Packing	2	○	
3-94					
3-95					
3-96					
3-97	L M 1 8 0 B - 0 1 6 4 Z 2	Shaft cover	1		
3-98	K 0 0 0 0 0 8 0 4 0 2	8 bolt 40	1		
3-100	K 0 0 1 0 1 0 0 2 5 2	10 heat-treated bolt 25	2		
3-101	L M 1 8 0 B S 0 2 8 0 A 0	Reel cover rear for export COMP	1		
3-102	K 4 2 0 5 0 0 1 2 8 0	DANGER Mark	1		
3-103	K 4 2 0 5 0 0 1 3 2 0	PREVENT PREMATURE WEAR Mark	1		

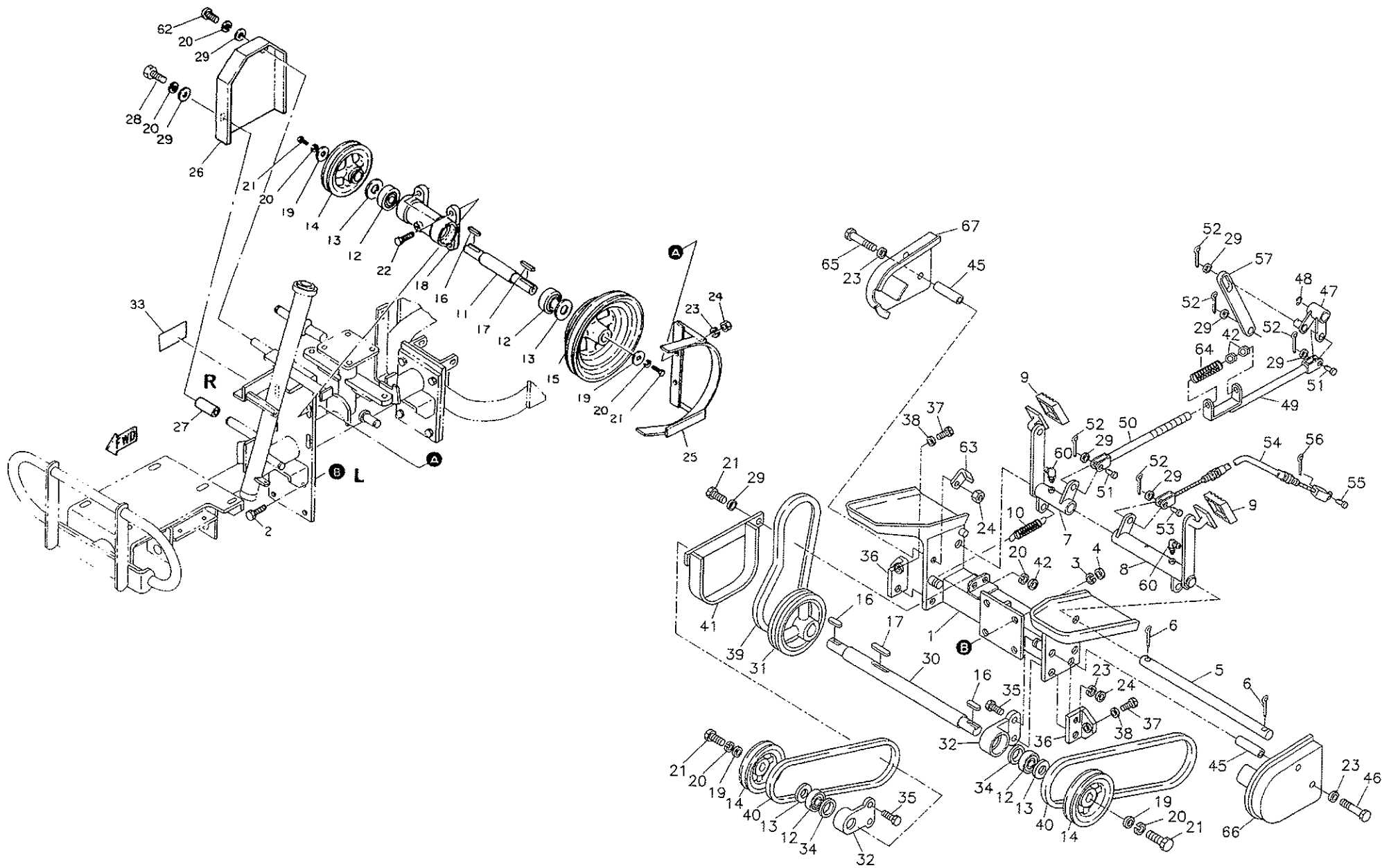
LM180BS

# 4 Frame Portion





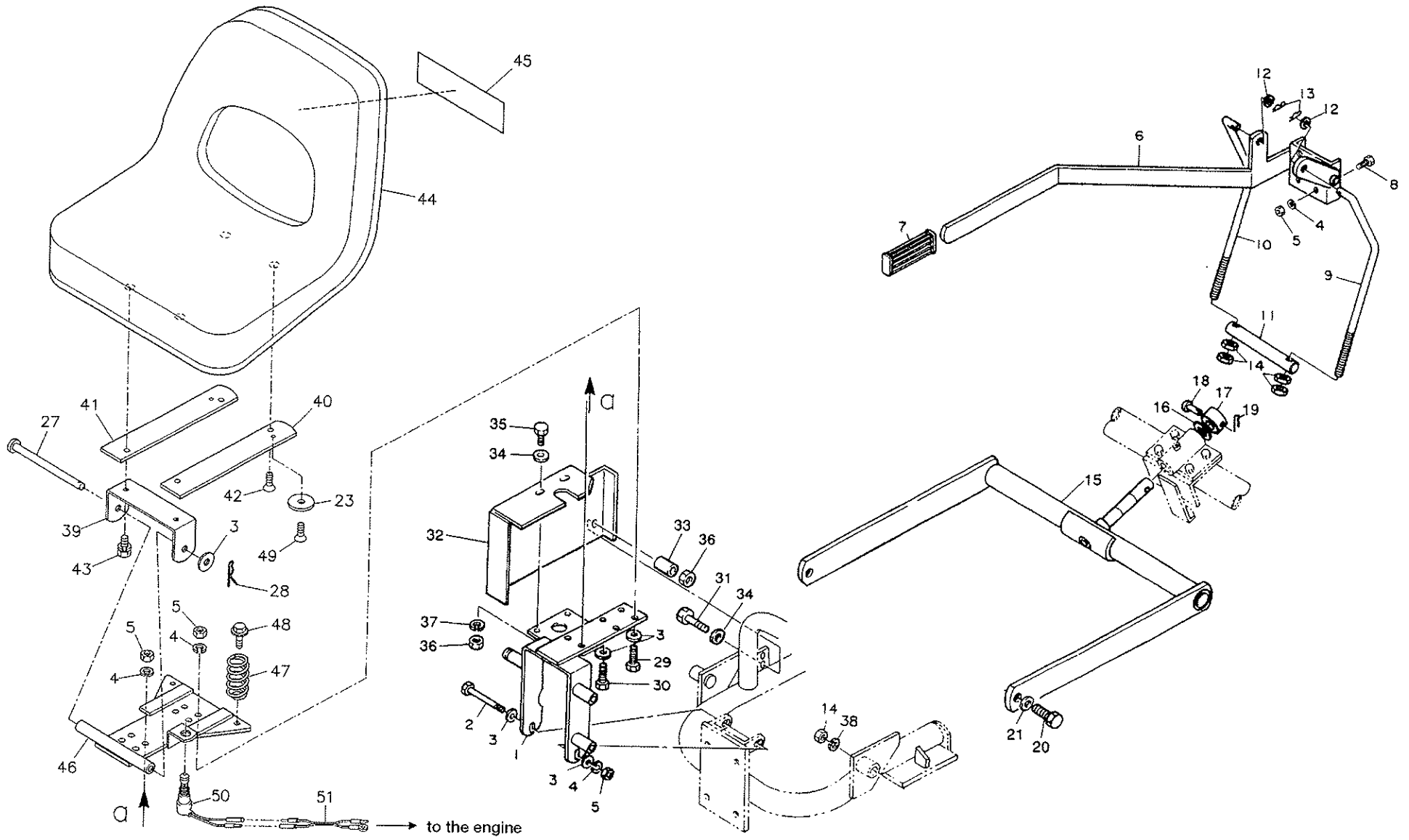
# 5 Intermediate Shaft Portion



Catalog No.	Code No.	Part Name	Qty /Unit	Common Part	Retail Price
5-1	LM180A-0303AD	Lower frame front	1	○	
5-2	K0000120352	12 bolt 35	8	○	
5-3	K0200120002	12S washer	12	○	
5-4	K0100120002	12 nut	14	○	
5-5	LM180A-0306A2	Brake shaft	1	○	
5-6	K0300032252	3.2 cotter pin 25	2	○	
5-7	LM180B-0309Z2	Brake pedal	1	○	
5-8	LM180B-0310Z2	Diff-lock pedal	1	○	
5-9	K4050000010	Pedal rubber 55-75	2	○	
5-10	K1030000042	2 U hook spring 1480	2	○	
5-11	LM180A-0312A0	Intermediate shaft	1	○	
5-12	K0604062040	Bearing 6204ZZ	4	○	
5-13	K5030520430	0.5 C2801P washer 2043	4	○	
5-14	K242000002D	B1V pulley 20124	3	○	
5-15	LM180A-0316Z2	Intermediate shaft double pulley	1	○	
5-16	K0500505250	5 double round key 525	3	○	
5-17	K0500505350	5 double round key 535.5	2	○	
5-18	LM180B-0319ZD	Intermediate shaft bearing	1	○	
5-19	K5073208322	3.2 SPHC washer 832	4	○	
5-20	K0200080002	8S washer	2	○	
5-21	K0000080202	8 bolt 20	2	○	
5-22	K0000100402	10 bolt 40	4	○	
5-23	K0200100002	10S washer	12	○	
5-24	K0100100002	10 nut	13	○	
5-25	LM180B-0335Z2	Belt stopper	1		
5-26	LM180B-1035BR	Belt cover F	1		
5-27	LM180B-1036Z2	9.2 SGP collar 13.840	1		
5-28	K0003080502	8 bolt 55	1		
5-29	K5000080002	8 washer	16	○	
5-30	LM180A-0325A0	Intermediate shaft lower	1	○	
5-31	LM180A-0328A2	Intermediate shaft lower pulley	1	○	
5-32	LM180B-0330Z2	Intermediate shaft lower bearing	2	○	
5-33	K4200000160	Nameplate (with adhesive)	1		
5-34	K0812242110	Oil seal MHS224211	2	○	
5-35	K0000100352	10 bolt 35	4	○	

Catalog No.	Code No.	Part Name	Qty /Unit	Common Part	Retail Price
5-36	LM180A-1024A2	Scraper	2	○	
5-37	K0000060402	6 bolt 40	4	○	
5-38	K0100060002	6 nut	1	○	
5-39	K2342031000	V belt OLB31	1	○	
5-40	K2342041000	V belt OLB41	2	○	
5-41	LM180B-0337ZD	Belt stopper	1	○	
5-42	K0100080002	8 nut	3	○	
5-43					
5-44					
5-45	LM180A-1020A2	10.2 STKM collar 1662	4	○	
5-46	K0003100802	10 bolt 80	3	○	
5-47	LM180A-0425A2	Power converting metal part	1	○	
5-48	K0400012002	Stop ring E12	1	○	
5-49	LM180B-0481Z2	Brake rod rear	1	○	
5-50	LM180B-0480Z2	Brake rod front	1	○	
5-51	K6030080172	8 flat head pin 17	2	○	
5-52	K0300025162	2.5 cotter pin 16	5	○	
5-53	K6040080222	8 round head pin 22	1	○	
5-54	K1190069000	Diff-lock wire 690	1	○	
5-55	K6030050152	5 flat head pin 15	1	○	
5-56	K0300020162	2 cotter pin 16	1	○	
5-57	LM180A-0430A2	Connecting plate	1	○	
5-58					
5-59					
5-60	K1440000020	C-type Grease nipple	2		
5-61	K5000100002	10 washer	4	○	
5-62	K0042080202	8 cross-recessed round head screw 20	1		
5-63	LM180B-0390Z2	Brake pedal stopper	1		
5-64	K1000000072	3.5 compression spring 17.560	1		
5-65	K0003100902	10 bolt 90	1		
5-66	LM180AS2401ZD	Pulley cover left	1		
5-67	LM180AS2402ZD	Pulley cover right	1		

# 6 Rear Mower Lifting Portion



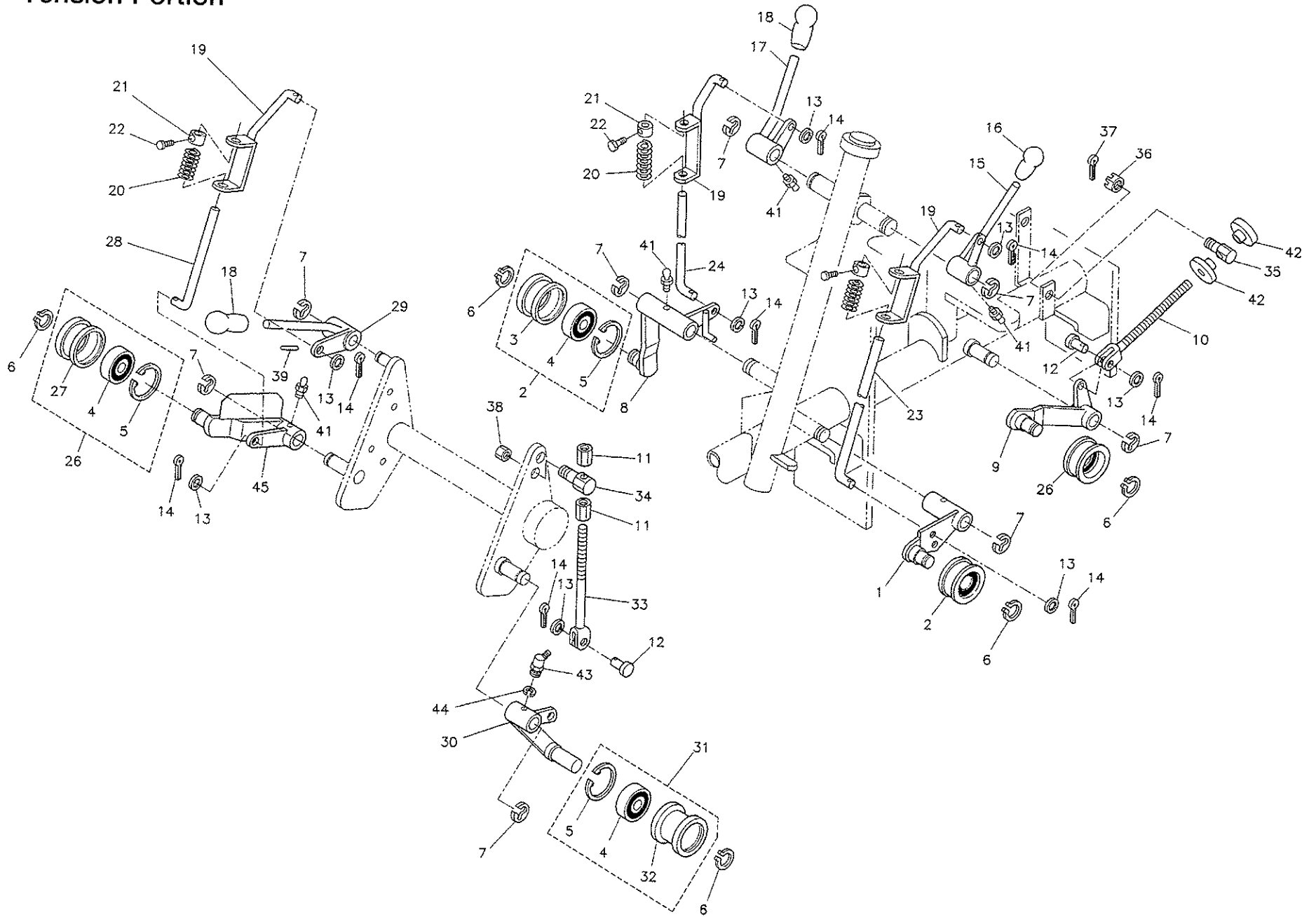


Catalog No.	Code No.	Part Name	Qty /Unit	Common Part	Retail Price
6-1	L M 1 8 0 B - 0 4 0 4 Z D	Upper frame	1		
6-2	K 0 0 0 3 1 0 1 3 0 2	10 bolt 130	1		
6-3	K 5 0 0 0 1 0 0 0 0 2	10 washer	6	○	
6-4	K 0 2 0 0 1 0 0 0 0 2	10S washer	10	○	
6-5	K 0 1 0 0 1 0 0 0 0 2	10 nut	10	○	
6-6	L M 1 8 0 B - 0 4 0 8 Z D	Lifting lever	1	○	
6-7	K 1 3 0 0 0 0 0 0 9 0	Square lever grip	1	○	
6-8	K 0 0 0 0 1 0 0 2 5 2	10 bolt 25	4	○	
6-9	L M 1 8 0 B - 0 4 0 9 Z 2	Lifting connecting shaft left	1	○	
6-10	L M 1 8 0 B - 0 4 1 1 Z 2	Lifting connecting shaft right	1	○	
6-11	L M 1 8 0 A - 0 4 1 0 Z 2	Lifting shaft	1	○	
6-12	K 5 0 0 0 1 2 0 0 0 2	12 washer	2	○	
6-13	K 0 3 3 1 3 0 0 0 0 2	13 snap pin	3	○	
6-14	K 0 1 0 0 1 2 0 0 0 2	12 nut	10	○	
6-15	L M 1 8 0 B - 0 4 6 1 Z D	Rear mower lifting arm	1	○	
6-16	K 5 0 5 1 0 2 5 3 5 0	1 C5191P washer 2535	1	○	
6-17	L M 1 8 0 A - 0 4 6 3 Z 2	Stopper collar	1	○	
6-18	K 6 0 4 0 0 8 0 4 0 2	8 round head pin 40	1	○	
6-19	K 0 3 3 0 8 0 0 0 0 2	8 snap pin	1	○	
6-20	L M 1 8 0 A - 0 4 7 6 Z 2	Supporting shaft pin	2	○	
6-21	K 5 0 7 4 5 1 6 4 0 2	4.5 SPHC washer 1640	2	○	
6-22					
6-23	K 1 7 0 1 0 0 0 0 4 0	Saddle bracket rubber GTM	2	○	
6-24					
6-25					
6-26					
6-27	K 1 7 0 1 0 0 0 0 2 2	Saddle shaft GTM	1	○	
6-28	K 0 3 3 1 0 0 0 0 0 2	10 snap pin	2	○	
6-29	K 0 0 0 0 1 0 0 3 5 2	10 bolt 35	2	○	
6-30	K 0 0 0 0 1 0 0 3 0 2	10 bolt 30	2	○	

Catalog No.	Code No.	Part Name	Qty /Unit	Common Part	Retail Price
6-31	K 0 0 0 3 0 8 0 5 0 2	8 bolt 50	1		
6-32	L M 1 8 0 B - 1 0 3 7 Z R	Brake cover	1		
6-33	L M 1 8 0 B - 1 0 3 8 Z 2	9.2 SGP collar 13.8 33	1		
6-34	K 5 0 0 0 0 8 0 0 0 2	8 washer	3	○	
6-35	K 0 0 0 0 0 8 0 1 5 2	8 bolt 15	2	○	
6-36	K 0 1 0 0 0 8 0 0 0 2	8 nut	3	○	
6-37	K 0 2 0 0 0 8 0 0 0 2	8S washer	2	○	
6-38	K 0 2 0 0 1 2 0 0 0 2	12S washer	2	○	
6-39	L M 1 8 0 B S 0 4 8 2 Z D	Seat mounting plate	1		
6-40	L M 1 8 0 B S 0 4 8 3 A D	Seat mounting reinforcement left	1		
6-41	L M 1 8 0 B S 0 4 8 4 A D	Seat mounting reinforcement right	1		
6-42	K 0 0 4 1 0 8 0 1 5 2	8 cross-recessed countersunk head screw 15	2		
6-43	K 0 0 0 6 0 8 0 2 0 2	8 bolt 20S	2		
6-44	K 1 7 0 0 0 0 0 1 0 0	K2 seat	1		
6-45	K 4 2 0 1 0 0 0 4 3 0	SAXSON TRIPLE Mark	1		
6-46	L M 1 8 0 B S 0 4 7 0 A D	Saddle mounting bracket	1		
6-47	K 1 0 0 0 0 0 0 8 1 8	5 compression spring 3260	2		
6-48	K 0 0 0 7 0 8 0 2 0 2	8 bolt 20 SW	2		
6-49	K 0 0 4 1 0 6 0 1 2 2	6 cross-recessed countersunk head screw 12	2		
6-50	K 3 6 7 1 0 0 0 0 3 0	Safety switch G1780	1		
6-51	L M 1 8 0 B T 1 6 1 0 Z 0	Safety switch wiring	1		

LM180BS

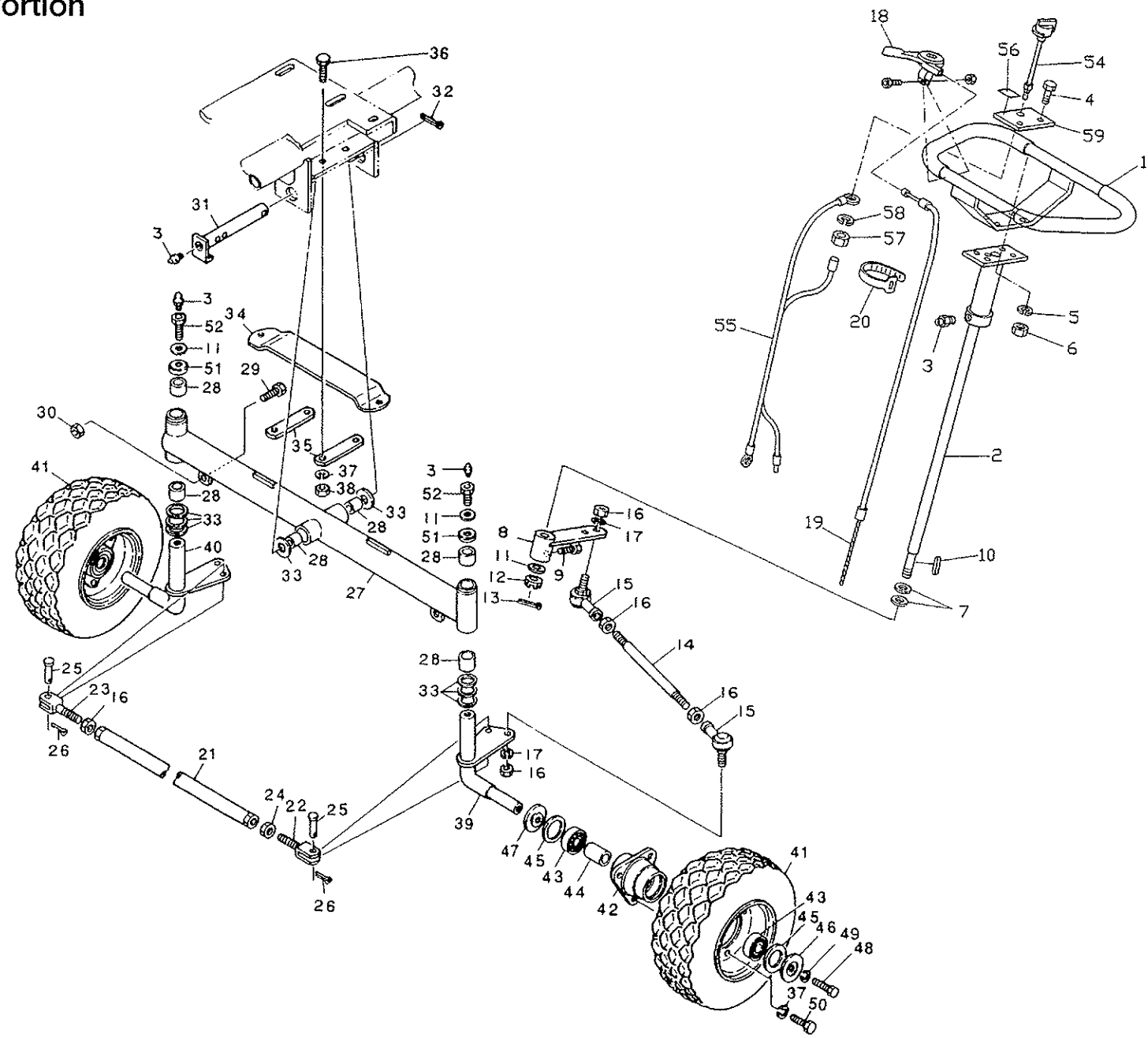
# 7 Tension Portion



Catalog No.	Code No.	Part Name	Qty /Unit	Common Part	Retail Price
7-1	L M 1 8 0 B-0 5 0 1 B 2	Tension lever	1	○	
7-2	K 8 0 3 0 0 0 0 0 7 0	Tension pulley Ass'y 1846	2sets	○	
7-3	K 2 4 7 1 1 8 0 4 6 2	Tension pulley 1846	2	○	
7-4	K 0 6 1 2 0 6 2 0 3 0	Bearing 62032RD	5	○	
7-5	K 0 4 0 2 0 4 0 0 0 1	Stop ring R40	2	○	
7-6	K 0 4 0 1 0 1 7 0 0 1	Stop ring S17	5	○	
7-7	K 0 4 0 0 0 1 2 0 0 2	Stop ring E12	8	○	
7-8	L M 1 8 0 B-0 5 0 7 A 2	Tension lever	1	○	
7-9	L M 1 8 0 B-0 5 4 6 Z 2	Tension lever	1	○	
7-10	L M 1 8 0 B-0 5 0 9 Z 2	Belt tension shaft	1	○	
7-11	K 0 1 6 0 0 0 0 3 5 2	8 tall nut	2	○	
7-12	K 6 0 3 0 0 8 0 1 7 2	8 flat head pin 17	2	○	
7-13	K 5 0 0 0 0 8 0 0 0 2	8 washer	8	○	
7-14	K 0 3 0 0 0 2 5 1 6 2	2.5 cotter pin 16	8	○	
7-15	L M 1 8 0 B-0 5 1 3 Z 2	Traveling clutch lever	1	○	
7-16	K 1 3 0 0 0 0 0 0 4 0	9 Grip; black 35.5	1	○	
7-17	L M 1 8 0 B-0 5 1 5 Z 2	Clutch lever	1	○	
7-18	K 1 3 0 0 0 0 0 0 5 0	9 Grip; red 35.5	2	○	
7-19	L M 1 8 0 B-0 5 2 2 Z 2	Rod-tension metal fitting	3	○	
7-20	K 1 0 0 0 0 0 0 0 4 2	3.2 compression spring 16.960	3	○	
7-21	K 6 2 1 8 0 0 0 0 2 2	8.5 tapped collar 1915	3	○	
7-22	K 0 0 0 0 0 8 0 1 5 2	8 bolt 15	3	○	
7-23	L M 1 8 0 A-0 5 2 6 Z 2	Tension rod;left	1	○	
7-24	L M 1 8 0 A-0 5 2 7 Z 2	Tension rod;right	1	○	
7-25					
7-26	K 8 0 3 0 0 0 0 0 8 0	Tension pulley Ass'y 22150	2sets	○	
7-27	K 2 4 7 1 2 2 1 5 0 2	Tension pulley 22150	2	○	
7-28	L M 1 8 0 A-0 5 3 2 Z 2	Tension rod;rear	1	○	
7-29	L M 1 8 0 B-0 5 3 3 Z 2	Rear clutch lever	1	○	
7-30	L M 1 8 0 B-0 5 4 8 Z 2	Tension lever	1	○	

Catalog No.	Code No.	Part Name	Qty /Unit	Common Part	Retail Price
7-31	K 8 0 3 0 0 0 0 0 9 0	Tension pulley Ass'y 30150	1set	○	
7-32	K 2 4 7 1 3 0 1 5 0 2	Tension pulley 30150	1	○	
7-33	L M 1 8 0 A-0 5 3 6 Z 2	Belt tension-shaft	1	○	
7-34	L M 1 8 0 A-0 5 3 7 B 2	Fixing shaft	1	○	
7-35	K 6 0 8 4 0 0 0 0 1 2	Fixing shaft	1	○	
7-36	K 0 1 2 4 1 2 0 0 0 2	12 Short nut with groove	1	○	
7-37	K 0 3 0 0 0 3 2 2 5 2	3.2 cotter pin 25	1	○	
7-38	K 0 1 0 0 1 2 0 0 0 2	12 nut	1	○	
7-39					
7-40					
7-41	K 1 4 4 0 0 0 0 0 1 0	Grease nipple	4		
7-42	K 0 1 4 9 0 8 3 2 0 2	8 tall nut 20	2		
7-43	K 1 4 4 0 0 0 0 0 3 0	B-type grease nipple	1		
7-44	K 0 2 0 0 0 6 0 0 0 2	6S washer	1		
7-45	L M 1 8 0 B S 0 5 4 7 Z 2	Tension lever	1		

# 8 Handle Portion

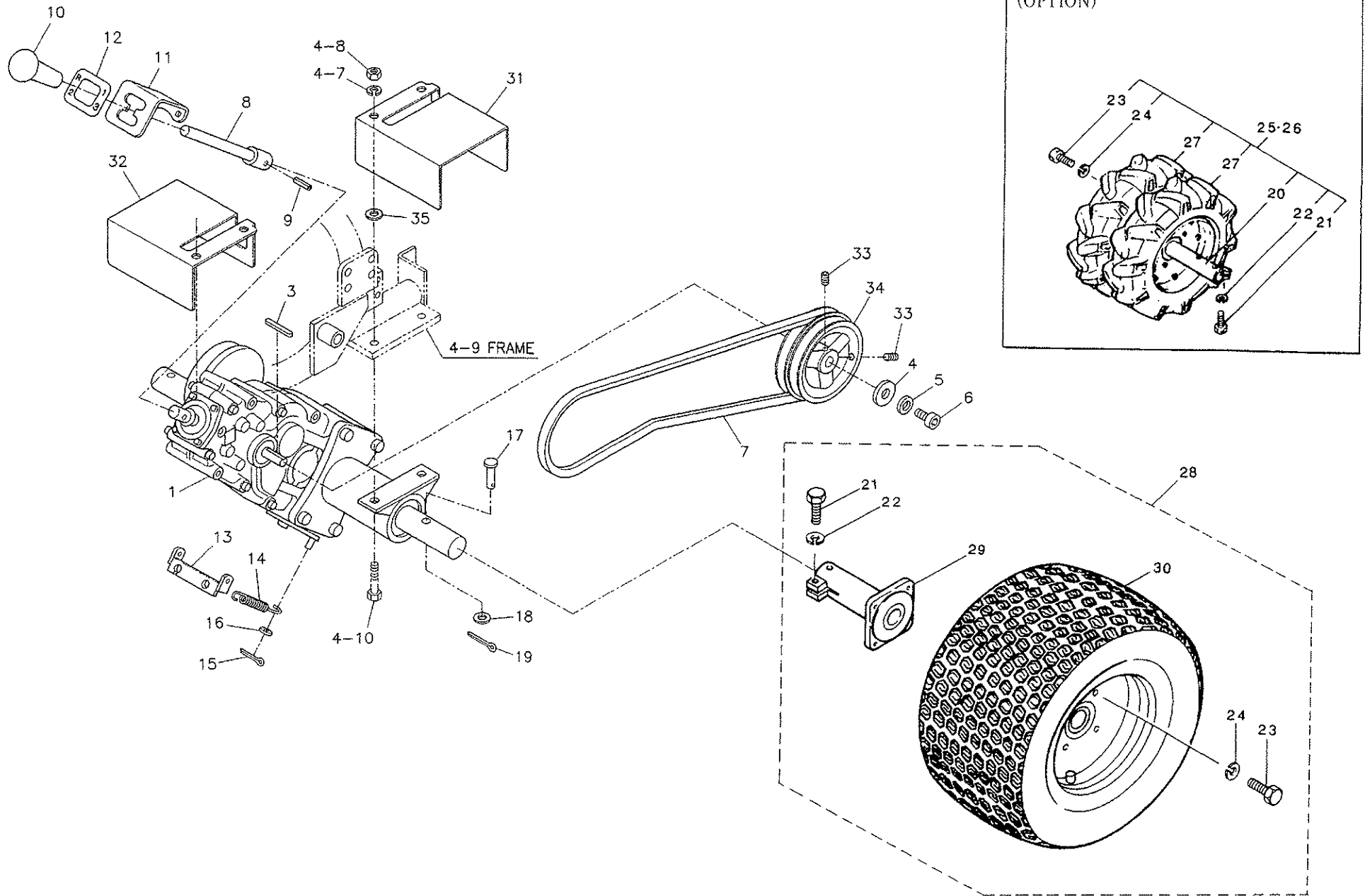


Catalog No.	Code No.	Part Name	Qty /Unit	Common Part	Retail Price
8-1	LM180BS0701ZD	Handle	1	○	
8-2	LM180A-0702CD	Handle shaft	1	○	
8-3	K1440000010	Grease nipple	4	○	
8-4	K0010060202	6 heat-treated bolt 20	4	○	
8-5	K0200060002	6S washer	4	○	
8-6	K0100060002	6 nut	4	○	
8-7	K5051017300	1C5191P washer 1730	2	○	
8-8	LM180A-0706A2	Arm	1	○	
8-9	K0000080152	8 bolt 15	1	○	
8-10	K0500404310	4 double round key 431.5	1	○	
8-11	K5000120002	12 washer	1	○	
8-12	K0124120002	12 slotted nut low	1	○	
8-13	K0300032252	3.2 cotter pin 25	1	○	
8-14	LM180A-0713Z2	Relay rod	1	○	
8-15	K1604120000	L-ball LHSA12	2	○	
8-16	K0100120002	12 nut	5	○	
8-17	K0200120002	12S washer	2	○	
8-18	K1203521000	Throttle lever E352100	1	○	
8-19	LM180AT1608Z0	Throttle wire	1	○	
8-20	K4242000022	Wire band 115	1	○	
8-21	LM180A-0712Z2	Tie rod	1	○	
8-22	LM180A-0715Z2	Adjusting metal left	1	○	
8-23	LM180A-0716Z2	Adjusting metal right	1	○	
8-24	K0180120002	12 left-hand thread nut	1	○	
8-25	K6031100252	10 heat-treated flat head pin 25	2	○	
8-26	K0300032202	3.2 cotter pin 20	2	○	
8-27	LM180A-0601ZD	Front axle	1	○	
8-28	K6000000050	22.3 bush 2620	6	○	
8-29	K0000100402	10 bolt 40	2	○	
8-30	K0100100002	10 nut	2	○	

Catalog No.	Code No.	Part Name	Qty /Unit	Common Part	Retail Price
8-31	LM180A-0603Z2	Front pin	1	○	
8-32	K0300040322	4 cotter pin 32	1	○	
8-33	K5051022350	1C5191P washer 2235	8	○	
8-34	LM180A-0620ZD	Plate spring	1	○	
8-35	LM180A-0621Z2	Plate spring mounting plate	2	○	
8-36	K0000080302	8 bolt 30	4	○	
8-37	K0200080002	8S washer	10	○	
8-38	K0100080002	8 nut	4	○	
8-39	LM180BS0606Z8	Front wheel axle left	1	○	
8-40	LM180BS0607Z8	Front wheel axle right	1	○	
8-41	K2060000010	Tire 4.00-5 Ass'y	2	○	
8-42	K2160000072	Front wheel mounting seat	2	○	
8-43	K0606062040	Bearing 6204RS	4	○	
8-44	K6212000180	20.2STKM collar 25.4 40	2	○	
8-45	K4010132500	1 oil sheet 3250	4	○	
8-46	K5090000222	Mounting seat outer cover	2	○	
8-47	K5090000232	Mounting seat inner cover	2	○	
8-48	K0000100252	10 bolt 25	2	○	
8-49	K0200100002	10S washer	2	○	
8-50	K0000080202	8 bolt 20	6	○	
8-51	LM180A-0616Z2	Dustproof cover	2	○	
8-52	K0071000082	12 bolt with nipple hole 15	2	○	
8-53					
8-54	K3662000050	Engine switch	1		
8-55	K3620000450	Engine switch wiring 820	1		
8-56	K4203000670	Engine switch mark	1		
8-57	K0102080002	8 nut 3	1		
8-58	K0210080002	8 Disc spring L	1		
8-59	LM180B-0721ZD	Stop switch mounting plate	1		

LM180BS

# 9 Mission Portion

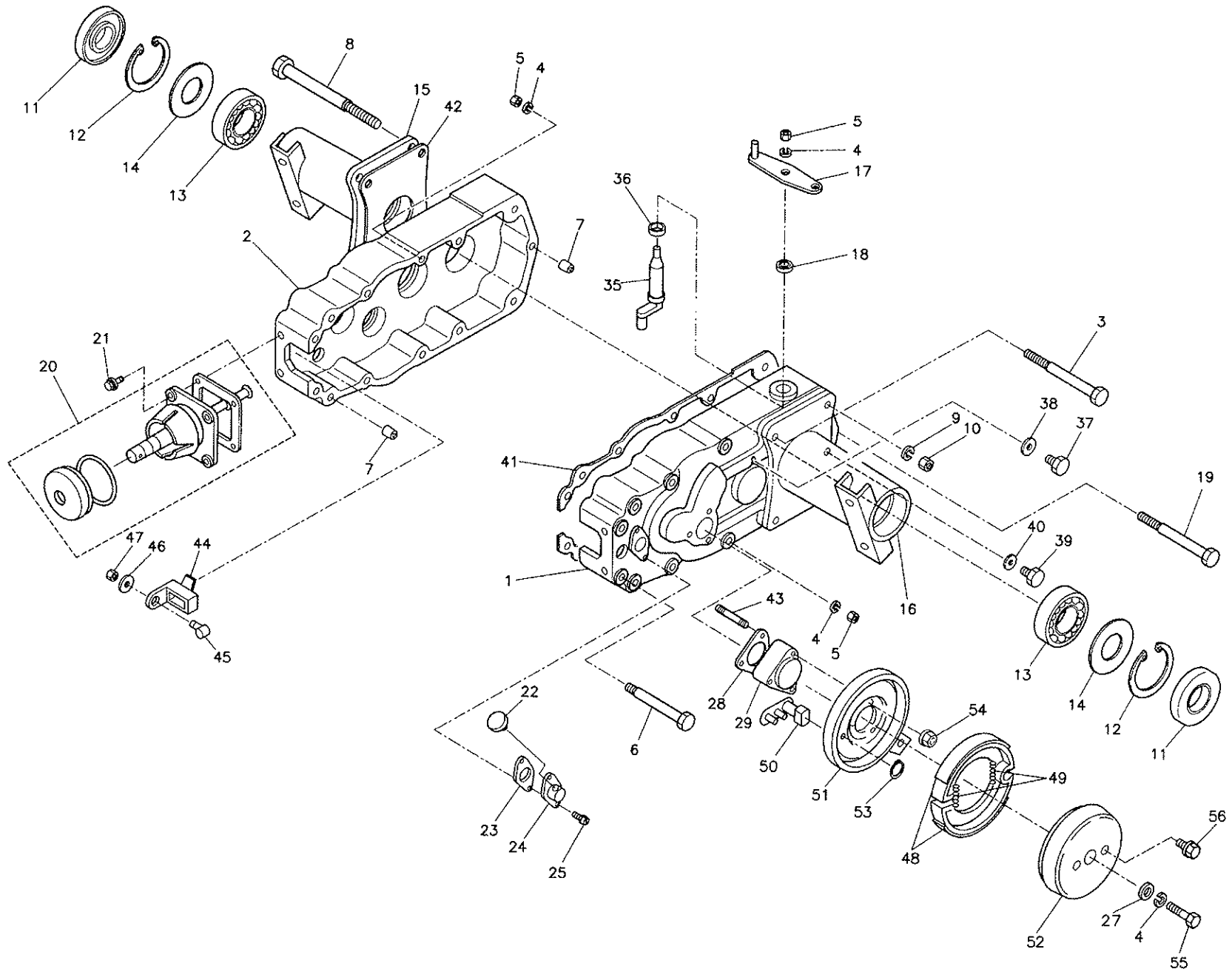


Catalog No.	Code No.	Part Name	Qty /Unit	Common Part	Retail Price
9- 1	K 2 7 0 0 0 0 2 3 0	Fuji mission MC81GA07	1	○	
9- 2					
9- 3	K 0 5 0 0 5 0 5 2 5 0	5 double round key 525	1	○	
9- 4	K 5 0 1 2 3 0 6 2 5 2	2.3 SPCC washer 625	1	○	
9- 5	K 0 2 0 0 0 6 0 0 0 2	6S washer	1	○	
9- 6	K 0 0 1 0 0 6 0 1 5 1	6 heat-treated bolt 15	1	○	
9- 7	K 2 3 4 2 0 6 6 0 0 0	V-belt OLB66	1	○	
9- 8	L M 1 8 0 A - 0 8 0 6 A 2	Change lever	1	○	
9- 9	K 0 3 2 0 0 5 0 2 5 1	5 spring pin 25	1	○	
9-10	K 1 3 0 0 0 0 0 0 3 0	11 grip black 36	1	○	
9-11	L M 1 8 0 A - 0 8 0 9 Z 2	Change guide plate	1	○	
9-12	L M 1 8 0 A - 0 8 1 0 Z 0	Change character plate	1	○	
9-13	K 7 3 5 0 0 0 0 0 3 2	Wire bracket metal	1	○	
9-14	K 1 0 4 0 0 0 0 0 3 D	2 hook spring 16104.5	1	○	
9-15	K 0 3 0 0 0 2 0 1 6 2	2 cotter pin 16	1	○	
9-16	K 5 0 0 0 0 6 0 0 0 2	6 washer	2	○	
9-17	K 6 0 4 1 1 1 0 6 3 2	11.5 heat-treated round head pin 63.5	2	○	
9-18	K 5 0 0 0 1 2 0 0 0 2	12 washer	2	○	
9-19	K 0 3 0 0 0 3 2 2 0 2	3.2 cotter pin 20	2	○	
9-20	L M 1 8 0 B - 0 8 1 7 Z 2	Wheel mounting seat	2	○	
9-21	K 0 0 0 0 1 2 0 3 5 2	12 bolt 35	2	○	
9-22	K 0 2 0 0 1 2 0 0 0 2	12S washer	2	○	
9-23	K 0 0 1 0 1 0 0 2 5 2	10 heat-treated bolt 25	8	○	
9-24	K 0 2 0 0 1 0 0 0 0 2	10S washer	8	○	
9-25	L M 1 8 0 A - 0 8 3 7 Z 0	Rear wheel set left (option)	1set	○	
9-26	L M 1 8 0 A - 0 8 3 8 Z 0	Rear wheel set right (option)	1set	○	
9-27	K 2 0 0 0 0 0 0 1 6 0	Tire 4.00-8 Ass'y	4sets	○	
9-28	L M 1 8 0 B - 0 8 3 6 Z 0	Rear wheel set Ass'y	2sets	○	
9-29	L M 1 8 0 B - 0 8 3 5 Z 2	Wheel mounting seat	2	○	
9-30	K 2 0 4 0 0 0 0 0 3 0	Tire PD3-18 x 8.50-8 Ass'y	2sets	○	

Catalog No.	Code No.	Part Name	Qty /Unit	Common Part	Retail Price
9-31	L M 1 8 0 B S 2 1 0 4 Z D	Rear wheel shaft cover left	1		
9-32	L M 1 8 0 B S 2 1 0 5 Z D	Rear wheel shaft cover right	1		
9-33	K 0 0 2 3 0 8 0 2 5 1	8 hollow set 25	2		
9-34	L M 1 8 0 A S 0 8 0 2 A 2	Mission pulley	1		
9-35	K 5 0 7 4 5 1 2 2 5 2	4.5 SPHC washer 1225	4		

LM180BSD

# 10 Mission Case Portion



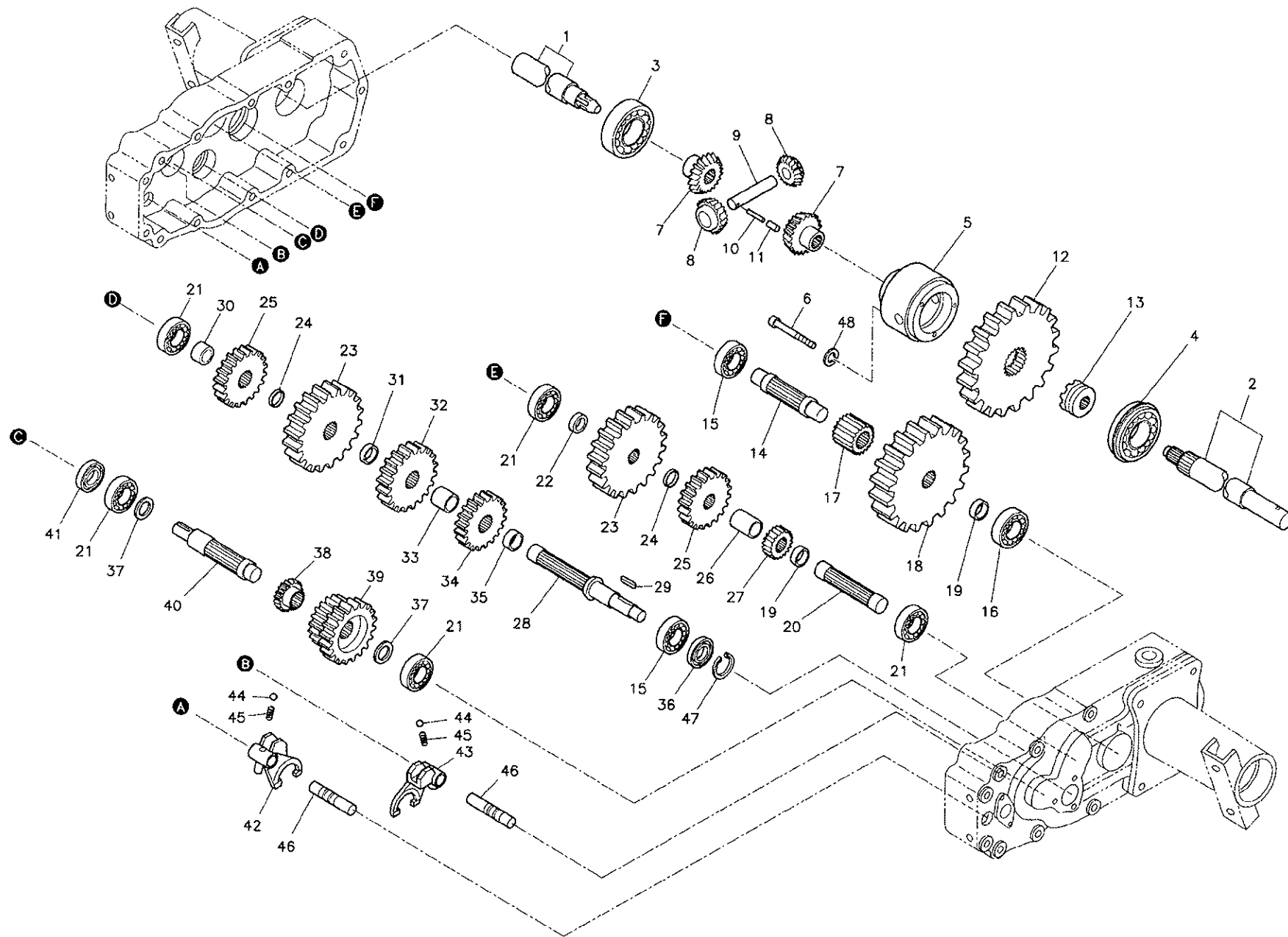


Catalog No.	Code No.	Part Name	Qty /Unit	Common Part	Retail Price
10-1	P 2 1 1 1 - 8 0 3 2 2 0	Case L	1		
10-2	P 2 1 1 1 - 8 0 3 3 1 8	Case R	1		
10-3	P 0 1 0 7 - 0 8 1 2 0 0	8 bolt 120	1		
10-4	P 0 4 1 0 - 0 8 0 0 0 0	8 washer S	11		
10-5	P 0 3 0 4 - 0 8 2 0 0 0	8 nut	8		
10-6	P 0 1 0 7 - 0 8 0 9 0 0	8 bolt 90	4		
10-7	P 2 1 5 5 - 4 0 1 7 0 9	Knock pipe	2		
10-8	P 2 1 0 1 - 4 0 4 9 0 7	Bolt 10-160	4		
10-9	P 0 4 1 0 - 1 0 0 0 0 0	10 washer S	4		
10-10	P 0 3 0 4 - 1 0 2 0 0 0	10 nut	4		
10-11	P 2 1 0 4 - 4 1 9 0 0 1	Oil seal 357213	2		
10-12	P 2 1 0 1 - 4 1 0 2 0 9	72 retaining ring R	2		
10-13	P 0 5 0 1 - 6 2 0 7 0 0	Ball BRG 6207	2		
10-14	P 2 1 0 2 - 4 2 6 2 0 3	Washer 35720.8	2		
10-15	P 2 3 1 0 - 6 0 5 1 0 8	Axle case R COMP	1		
10-16	P 2 3 1 0 - 6 0 5 0 0 9	Axle case L COMP	1		
10-17	P 2 3 4 0 - 4 0 8 7 1 3	Diff-lock lever COMP	1		
10-18	P 2 1 0 4 - 4 0 0 4 0 1	Oil seal 14248	1		
10-19	P 0 1 0 7 - 0 8 1 1 5 0	8 bolt 115	2		
10-20	P 2 4 4 0 - 0 0 5 7 0 0	Change Ass'y	1		
10-21	P 0 0 2 7 - 0 8 0 2 0 1	8 bolt SW20	4		
10-22	P 2 1 0 5 - 4 0 4 0 0 2	Plug G20	1		
10-23	P 2 1 5 3 - 4 0 4 8 0 1	PK oil filling port	1		
10-24	P 2 1 5 7 - 4 0 1 9 0 5	Oil filling port	1		
10-25	P 0 0 3 0 - 0 6 0 1 6 0	6 round head screw S16	2		
10-26					
10-27	P 2 1 0 2 - 4 2 7 3 0 9	Washer 8283.2	1		
10-28	P 2 1 5 3 - 4 0 7 0 0 0	PK brake	1		
10-29	P 2 1 1 4 - 4 0 1 0 0 9	Holder BK	1		
10-30					

Catalog No.	Code No.	Part Name	Qty /Unit	Common Part	Retail Price
10-31					
10-32					
10-33					
10-34					
10-35	P 2 1 4 4 - 4 0 5 3 0 5	Shifter (diff)	1		
10-36	P 2 1 0 3 - 4 0 5 4 0 7	Collar 15206.5	1		
10-37	P 2 1 0 5 - 4 0 0 1 0 3	Plug 8	1		
10-38	P 2 1 0 5 - 4 0 0 2 0 2	Gasket 8	1		
10-39	P 2 1 0 5 - 4 0 0 8 0 6	Plug 14	1		
10-40	P 2 1 0 5 - 4 0 0 9 0 5	Gasket 14	1		
10-41	P 2 1 5 3 - 7 0 0 5 0 9	PK case	1		
10-42	P 2 1 5 3 - 4 0 7 3 0 7	PK axle case	2		
10-43	P 0 1 7 6 - 0 8 0 5 0 3	8 stud 50	3		
10-44	P 2 3 4 0 - 4 0 4 0 0 1	Stopper COMP	1		
10-45	P 2 1 5 4 - 4 0 2 4 0 0	Stopper pin	1		
10-46	P 2 1 0 2 - 4 0 8 4 0 9	Washer 8221	1		
10-47	P 0 3 0 4 - 0 8 3 0 0 0	8 nut	1		
10-48	P 2 1 5 0 - 0 0 1 3 0 4	Brake shoe	2		
10-49	P 2 1 5 0 - 0 0 1 5 0 2	Spring	2		
10-50	P 2 1 5 0 - 0 0 1 2 0 5	BK lever COMP	1		
10-51	P 2 1 5 0 - 0 0 1 1 0 6	BK cover COMP	1		
10-52	P 2 1 5 0 - 0 0 1 8 0 9	Drum BK	1		
10-53	P 0 6 0 0 - 0 1 8 0 0 0	18 retaining ring S	1		
10-54	P 2 1 0 1 - 4 3 2 5 0 6	Flange nut 8	3		
10-55	P 0 1 5 7 - 0 8 0 2 5 0	8 flange bolt	1		
10-56	P 0 1 5 7 - 0 8 0 1 4 0	8 flange bolt	2		

LM180B

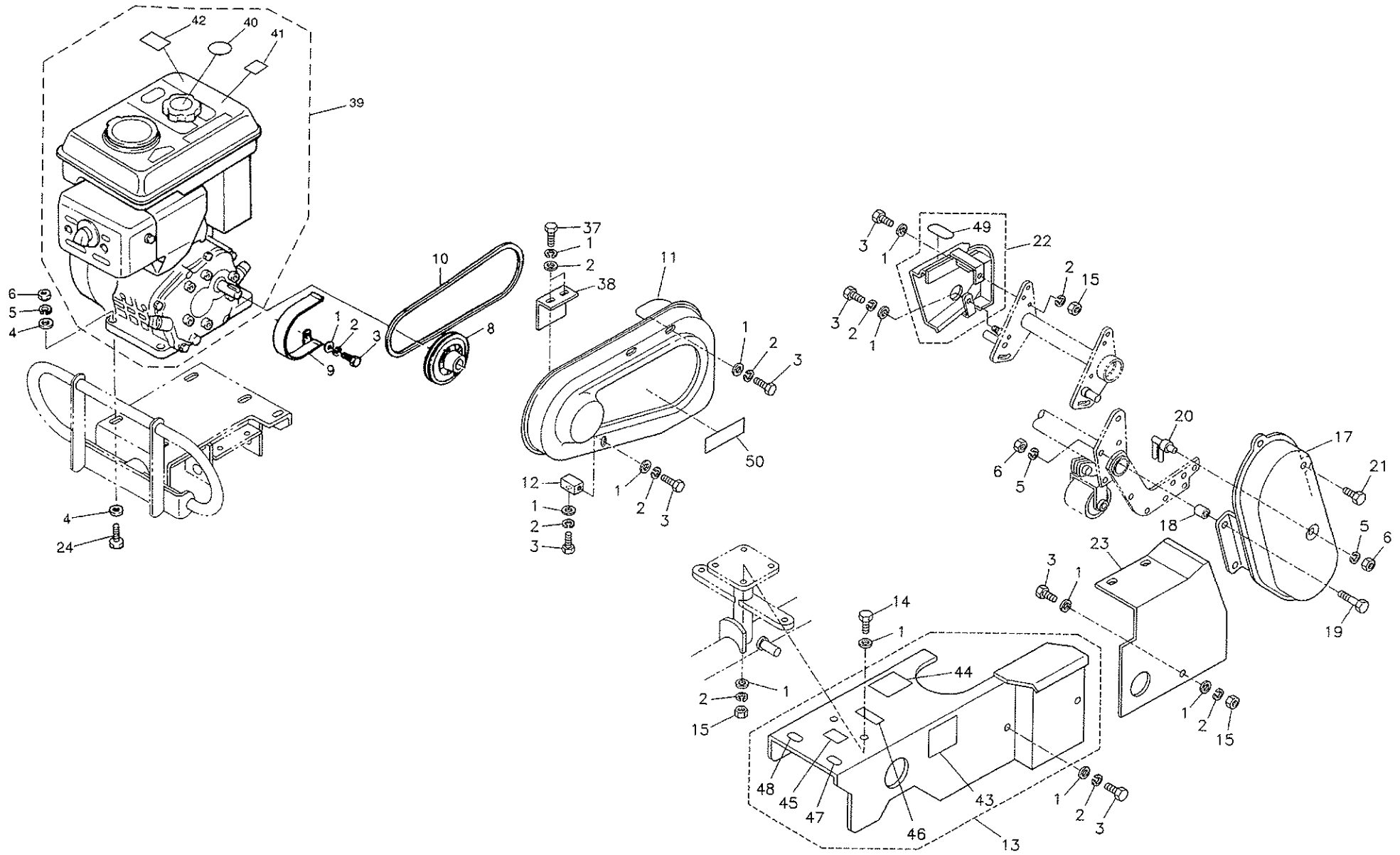
# 11 Gear Portion



Catalog No.	Code No.	Part Name	Qty /Unit	Common Part	Retail Price
11-1	P 2 1 3 3 - 6 7 2 0 0 4	G shaft R	1		
11-2	P 2 1 3 3 - 6 7 1 9 0 8	G shaft L	1		
11-3	P 0 5 0 1 - 6 2 0 6 0 0	Ball BRG 6206	1		
11-4	P 0 5 0 1 - 6 2 0 6 6 0	Ball BRG 6206NR	1		
11-5	P 2 1 3 6 - 6 0 0 3 0 3	Diff case	1		
11-6	P 2 1 0 1 - 4 1 4 2 1 8	Bolt 8-57	1		
11-7	P 2 1 2 0 - 4 0 1 9 4 5	Diff side gear	2		
11-8	P 2 1 2 0 - 4 0 1 8 4 6	Bevel pinion	2		
11-9	P 2 1 3 1 - 4 0 5 0 0 4	Diff shaft	1		
11-10	P 0 4 6 0 - 0 5 0 2 8 0	5 pin S28	1		
11-11	P 0 4 5 2 - 0 8 0 1 6 0	8 pin 16	1		
11-12	P 2 1 2 9 - 4 0 5 7 2 4	Gear L48	1		
11-13	P 2 1 3 5 - 4 0 3 2 0 4	Clutch	1		
11-14	P 2 1 3 2 - 4 0 4 5 0 1	Shaft D	1		
11-15	P 0 5 0 1 - 6 2 0 4 0 0	Ball BRG 6204	2		
11-16	P 0 5 0 1 - 6 3 0 4 0 0	Ball BRG 6304	1		
11-17	P 2 1 2 2 - 4 0 4 3 0 6	Gear K15	1		
11-18	P 2 1 2 2 - 4 0 4 2 0 7	Gear J54	1		
11-19	P 2 1 0 3 - 4 1 2 1 0 2	Collar 20259	2		
11-20	P 2 1 3 2 - 4 0 4 4 0 2	Shaft C	1		
11-21	P 0 5 0 1 - 6 3 0 3 0 0	Ball BRG 6303	5		
11-22	P 2 1 0 3 - 4 1 1 9 0 7	Collar 17257.5	1		
11-23	P 2 1 2 2 - 4 0 4 0 0 9	Gear D43	2		
11-24	P 0 7 0 1 - 2 0 1 0 0 0	Washer	2		
11-25	P 2 1 2 2 - 4 0 3 5 0 7	Gear S29	2		
11-26	P 2 1 0 3 - 4 1 2 3 0 0	Collar 202534	1		
11-27	P 2 1 2 2 - 4 0 3 4 0 8	Gear 115	1		
11-28	P 2 1 3 3 - 4 2 6 5 0 0	Shaft B	1		
11-29	P 0 4 8 0 - 0 5 0 2 5 0	5 key 525	1		
11-30	P 2 1 0 3 - 4 1 1 8 0 8	Collar 172515.5	1		

Catalog No.	Code No.	Part Name	Qty /Unit	Common Part	Retail Price
11-31	P 2 1 0 3 - 4 1 2 2 0 1	Collar 20257.5	1		
11-32	P 2 1 2 2 - 4 0 4 1 0 8	Gear E33	1		
11-33	P 2 1 0 3 - 4 1 1 4 0 2	Collar 202524	1		
11-34	P 2 1 2 2 - 4 0 3 3 0 9	Gear F28	1		
11-35	P 2 1 0 3 - 4 1 2 0 0 3	Collar 202511.5	1		
11-36	P 2 1 0 4 - 4 0 0 5 0 0	Oil seal 20407	1		
11-37	P 0 7 0 1 - 1 7 2 0 0 0	Washer	2		
11-38	P 2 1 2 2 - 4 0 3 8 1 5	Gear A16	1		
11-39	P 2 1 2 2 - 4 0 3 9 0 3	Gear BC25-31	1		
11-40	P 2 1 3 3 - 4 0 3 5 0 3	Shaft A	1		
11-41	P 2 1 0 4 - 4 0 6 8 0 9	Oil seal 17407	1		
11-42	P 2 1 4 4 - 4 0 4 0 0 1	Shifter fork A	1		
11-43	P 2 1 4 4 - 4 0 8 1 0 8	Shifter fork BC	1		
11-44	P 0 6 5 0 - 0 5 0 1 6 0	5/16 steel ball	2		
11-45	P 2 1 5 2 - 4 0 0 2 0 0	Spring (fork)	2		
11-46	P 2 1 4 1 - 4 0 0 5 0 1	Shifter shaft A	2		
11-47	P 2 1 5 2 - 4 0 0 3 0 9	Retaining ring 20	1		
11-48	P 0 4 1 0 - 0 8 0 0 0 0	8 washer S	4		

# 12 Engine Portion



Catalog No.	Code No.	Part Name	Qty /Unit	Common Part	Retail Price
12-1	K 5 0 0 0 0 8 0 0 0 2	8 washer	17	○	
12-2	K 0 2 0 0 0 8 0 0 0 2	8S washer	14	○	
12-3	K 0 0 0 0 0 8 0 2 0 2	8 bolt 20	5	○	
12-4	K 5 0 0 0 1 0 0 0 0 2	10 washer	8	○	
12-5	K 0 2 0 0 1 0 0 0 0 2	10S washer	11	○	
12-6	K 0 1 0 0 1 0 0 0 0 2	10 nut	7	○	
12-7					
12-8	LM 1 8 0 A - 1 6 0 2 Z 2	Engine pulley	1	○	
12-9	LM 1 8 0 A - 1 6 0 7 Z 2	Belt stopper	1	○	
12-10	K 2 3 4 3 0 4 9 0 0 0	V-belt GLB49	1	○	
12-11	LM 1 8 0 B - 1 0 1 7 A R	Belt cover A	1	○	
12-12	LM 1 8 0 A - 1 0 0 2 B 2	Cover mounting metal	1	○	
12-13	LM 1 8 0 B S 1 0 4 0 B 0	Belt cover B COMP	1		
12-14	K 0 0 0 0 0 8 0 2 5 2	8 bolt 25	3	○	
12-15	K 0 1 0 0 0 8 0 0 0 2	8 nut	7	○	
12-16					
12-17	LM 1 8 0 B - 1 0 2 6 Z R	Belt cover C	1	○	
12-18	K 6 2 1 1 0 0 0 0 5 2	12.7 SGP collar 17.3163	2	○	
12-19	K 0 0 0 0 1 0 0 4 0 2	10 bolt 40	2	○	
12-20	LM 1 8 0 A - 1 0 2 5 Z 2	Scraper	1	○	
12-21	K 0 0 0 0 0 8 0 1 5 2	8 bolt 15	1	○	
12-22	LM 1 8 0 B S 1 0 4 2 A 0	Belt cover D COMP	1	○	
12-23	LM 1 8 0 B - 1 0 1 9 Z R	Belt cover E	1	○	
12-24	K 0 0 0 0 1 0 0 4 5 2	10 Bolt 45	4	○	
12-25					
12-26					
12-27					
12-28					
12-29					
12-30					

Catalog No.	Code No.	Part Name	Qty /Unit	Common Part	Retail Price
12-31					
12-32					
12-33					
12-34					
12-35					
12-36					
12-37	K 0 0 0 0 0 8 0 1 2 2	8 bolt 12	2		
12-38	LM 1 8 0 B - 1 0 4 2 Z R	Supplementary cover	1		
12-39	LM 1 8 0 B T 1 6 0 9 Z 0	Robin EH300B67001 COMP	1		
12-40	K 4 2 0 5 0 0 1 3 0 0	ENGINE OIL WARNING Mark	1		
12-41	K 4 2 0 5 0 0 1 3 3 0	NOISE WARNING Mark	1		
12-42	K 4 2 0 9 0 0 0 7 2 0	LWA 105 Mark	1		
12-43	K 4 2 0 5 0 0 1 2 9 0	HEALTH&SAFETY WARNING Mark	1		
12-44	K 4 2 0 5 0 0 1 3 1 0	SAFETY INSTRUCTIONS Mark	1		
12-45	K 4 2 0 9 0 0 0 6 4 0	CE Mark	1		
12-46	LM 1 8 0 A - 2 2 2 1 Z 0	MADE IN JAPAN Mark	1		
12-47	LM 1 8 0 A - 2 2 2 4 Z 0	DIFFER LOCK PEDAL Mark	1		
12-48	LM 1 8 0 A - 2 2 2 5 Z 0	BRAKE PEDAL Mark	1		
12-49	LM 1 8 0 A - 2 2 2 6 Z 0	CUTTER REVOLUTION Mark	1		
12-50	LM 1 8 0 B - 1 0 1 3 Z 0	LM180B Mark	1		

LM180BS



**KYOEISHA CO., LTD.**

**BARONESS**

## **CE Declaration of Conformity**

We, **Kyoeisha Co., Ltd.** of 1-26 Miyuki-cho, Toyokawa, Aichi-pref. 442-8530 Japan  
declare that :

Equipment Ride-on lawnmower  
Model name / number BARONESS / LM180BT

in accordance with the following Directives :

98/37/EC The Machinery Directive and its amending directives

has been designed and manufactured using the following specifications :

EN 292-1 Safety of machinery – Basic concepts, general principles for design –  
Part 1 : Basic terminology, methodology

EN 292-2 Safety of machinery – Basic concepts, general principles for design –  
Part 2 : Technical principles and specifications

EN 836 Garden equipment – Powered lawnmowers – Safety

Signed : *Katsunori Makino*

Name : **Katsunori Makino**

Position : **Development Dept. Manager**

Date : **January 23, 2006**

## Manufacturers Declaration of Conformity for

### Product Identification

Product : Ride-on lawnmower  
Brand : BARONESS ( Saxon )  
Type : LM180BT  
Starting Serial No. : 13118  
Measured Sound Power Level : LWA 103.63 dB  
Guaranteed Sound Power Level : LWA 105 dB  
Manufacturer  
Name : Kyoetsiha Co., Ltd.  
Address : 1-26 Miyuki-cho, Toyokawa, Aichi-pref.,  
Japan

### Technical Documentation

Keeper's Name : Kyoetsiha Co., Ltd.  
Keeper's Address : 1-26 Miyuki-cho, Toyokawa, Aichi-pref.,  
Japan

### Conformity Assessment Procedure :

Internal Control of Production with Assessment of  
Technical Documentation and Periodical Checking  
( Annex VI ) of 2000/14/EC

### Involved Notified Body

Name : SNC-H  
Address : 11, Route de Sandweiler  
5230 Sandweiler  
Luxembourg

### Technical Construction File

Date : January 23, 2006  
Technical Construction File No. : No. TC180BT-02  
Test Laboratory : TUV Rheinland Luxembourg GmbH  
Centre Commercial "Le2000" Z.I. Route de Bettembourg  
L-3378 LIVANGE Luxembourg

### Means of conformity

The product is in conformity with the Directive relating to the noise emission in the environment by equipment for use outdoors 2000/14/EC, in accordance with Article 12 of the Directive.

**References of other Community Directives applied**  
98/37/EC


Signature :



Katsunaki Makino  
Manager  
Development Dept.  
Kyoetsiha Co., Ltd.

Date :

January 23, 2006

 **KYOISHA CO., LTD.**  
Turt Care Machinery  
Tel : (0533)84-1221  
Fax : (0533)84-1220

Head Office  
1-26, Miyuki-cho, Toyokawa,  
Aichi-Pref. 442-8530 Japan.