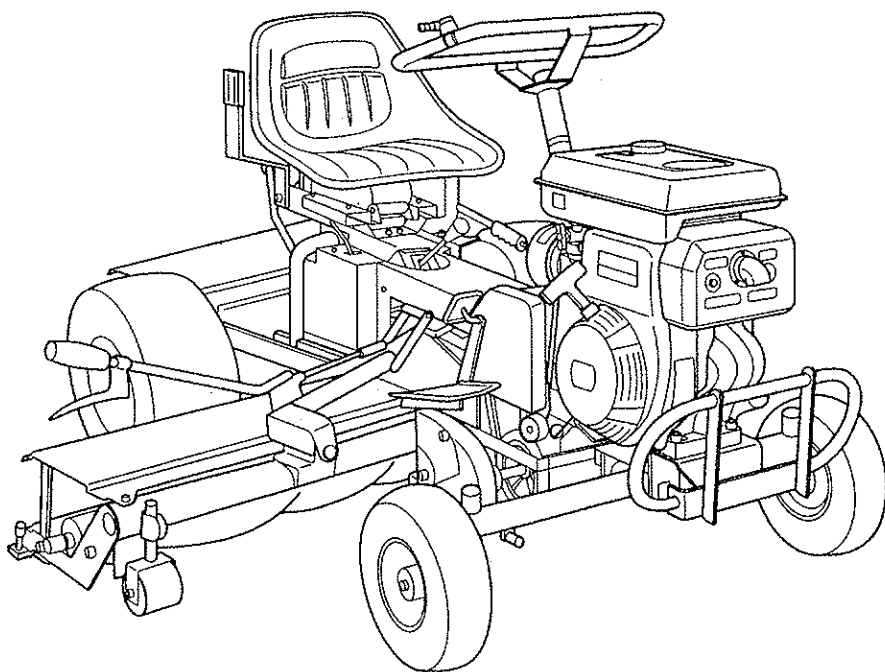


SUPER MOWER
LM180BSD
SAXON DIESEL MODEL

BARONESS
Lawn Mower



Owner's Handling Manual & Parts Catalog
for Saxon Diesel 2003 Model

Read this manual before using the machine.

 **KYOEISHA CO., LTD.**

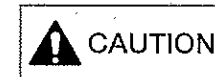
Greeting

Thank you very much for the riding-type triple lawn mower, Baroness Super Mower LM180B.

This manual explains the method of correct handling, adjustments, and inspection of LM180B. Prior to use, carefully read this Handling Manual, as well as the separate Handling Manual for Engine to thoroughly understand the contents for safe, correct operation.

= NOTE =

- ◆ "Right and left" described in this Manual apply to cases where the machine is viewed from the driver's seat.
- ◆ This machine cannot be driven on a public road.
- ◆ The contents of this Manual are subject to change for improvement without notice.



- Marks attached to this Handling Manual and the machine indicate precautions for safety. Read them carefully.
- Understand well the operating procedures and safety precautions before operating the machine.
- The marks and explanatory sentences should be kept clean. If they are lost or damaged, attach new marks.

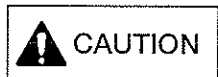
Warning Marks



Negligence of the warning will cause death or serious injury.

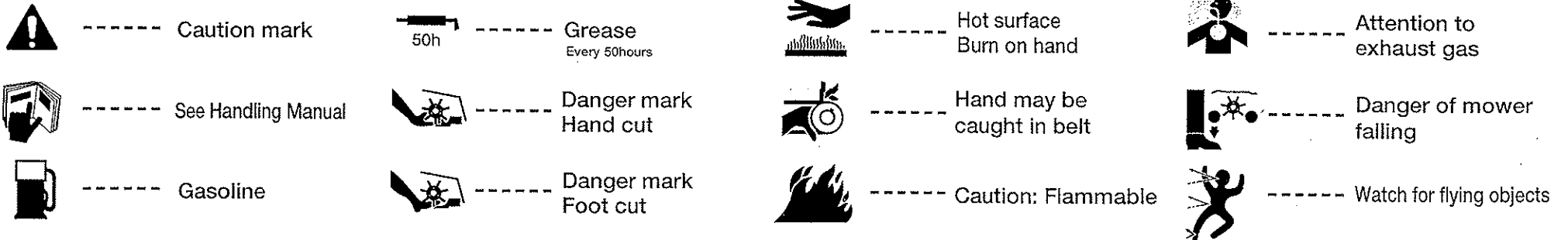


Negligence of the warning may cause death or serious injury.



Negligence of the warning may cause injury.

Symbols



Contents

Handling Manual

Warning for Marks 1

WARNING 1. Safety Precautions 3
CAUTION

DANGER 1-1 Safety Check before Work 3
CAUTION 1-2 Safety Check during Work 3
 1-3 Safety Check after Work 3

2. Names of Portions 4

3. Inspection before Use 4

3-1 Inspection of Engine Oil 4

3-2 Inspection of Air Cleaner 4

3-3 Inspection of Fuel 5

3-4 Inspection of Oil Leakage 5

3-5 Inspection of Tires 5

3-6 Inspection of Belts 5

3-7 Inspection of Mowers 5

4. Operation and Adjustment of Each Section 5

4-1 Start / Stop of Engine 5

▲ 4-2 Operation of Travelling Clutch Lever 6

4-3 Operation and Adjustment of Brake Pedal 6

4-4 Operation and Adjustment of Diff-Lock Pedal 6

4-5 Operation of Clutch Lever for Right/Left Mowers 6

4-6 Operation of Clutch Lever for Rear Mower 6

4-7 Operation of Change Lever 6

4-8 Operation and Adjustment of Side Brake 7

4-9 Adjustment of Mowing Height 7

4-10 Adjustment of Blade Engagement 7

4-11 Adjustment of Belt Tension 8

DANGER 5. Mowing Work 8

5-1 How to Operate 8

5-2 Adjustment before Working 8

DANGER 6. Method of Lapping 8

7. Maintenance and Inspection of Portions 9

7-1 Change of Engine Oil 9

7-2 Cleaning of Air Cleaner 9

7-3 Change of Mission Oil 10

7-4 Oiling and Greasing 10

7-5 Inspection of Parts 10

7-6 Maintenance List 10

8. Inspection for Long Storage 11

9. Specifications 11

Parts Catalog

1. Left Mower Portion 14

2. Right Mower Portion 16

3. Rear Mower Portion 18

4. Frame Portion 20

5. Intermediate Shaft Portion 22

6. Rear Mower Lifting Portion 24

7. Tension Portion 26

8. Handle Portion 28

9. Mission Portion 30

10. Mission Case Portion 32

11. Gear Portion 34

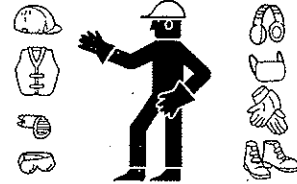
12. Engine Portion 36

13. Side Brake Installation & Accessory Tools 38

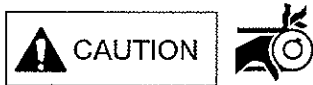
1. Safety Precautions

Before operating, understand correct operating procedures and safety precautions.

1-1 Safety Check before Work



- ① Wear clothes that fit your body. Wear protectors (goggles, safety shoes, helmet, gloves, etc.) that suit the work.
- ② Learn how to stop the engine in an emergency. When the engine is started, put the change lever in the neutral position.



- ③ Belts, pulleys, rotating shafts, etc. are very dangerous when exposed. Check that all the covers are installed at specified positions.
- ④ Check that the brake, steering wheel, tires are normal.
- ⑤ Check that bolts and nuts are not loose. If they are, tighten them.

1) Cautions when engine is started

- ① Check that the side brake is pulled.
- ② Keep away from children and other persons, and operate the machine alone.
- ③ Start the engine only from the driver's seat.



- ④ Do not operate the engine in a poorly-ventilated place. The exhaust gas contains noxious carbon monoxide.

1-2 Safety Check during Work


- ① Pull the traveling lever slowly to prevent sudden starting.




- ② Be careful not to drop the mower when lifting it.

- ③  Do not put your hand or foot near the blade reel cylinders when they are rotating.

- ④  The blade reel cylinders and bottom blades are very sharp. Handle them carefully.

- ⑤  Fire is strictly prohibited during fuel supply. Supply fuel outdoors after the engine is stopped and cooled.

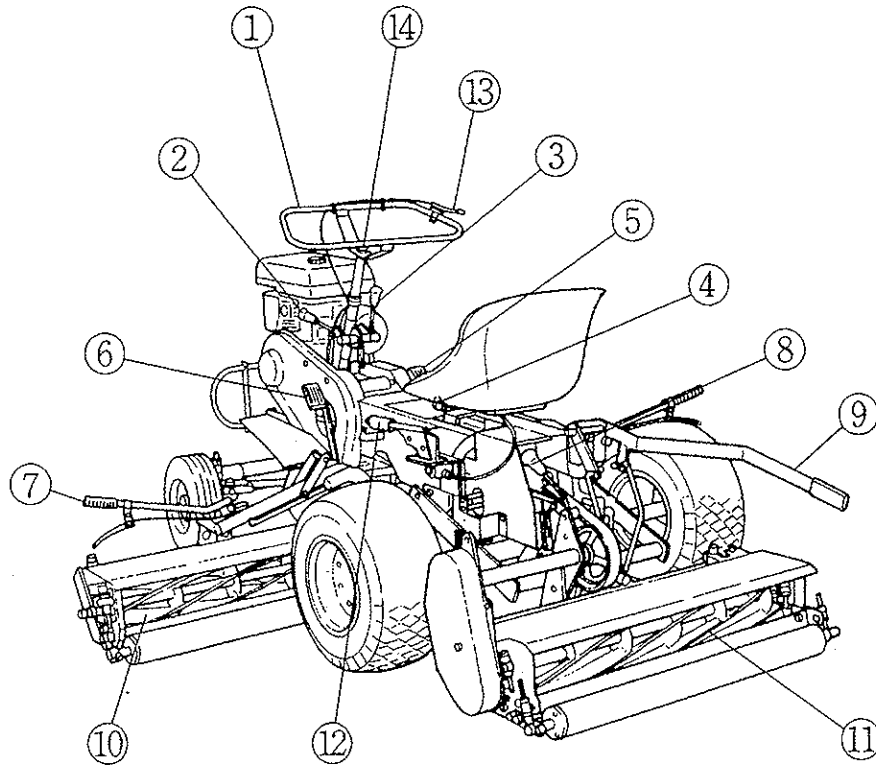
- ⑥  The engine is very hot during operation. Do not put your hand or combustibles near the muffler and engine.

- ⑦ Always operate the machine at a speed that allows emergency stopping. Avoid sudden starting or sudden turning. Travel at low speed especially when travelling downhill.
- ⑧ Do not operate at a place in danger of falling or slipping.
- ⑨ When leaving the driver's seat, park the machine at a flat place, stop the engine, and pull the side brake.
- ⑩ If any machine abnormality such as abnormal vibration or abnormal noise is noticed during operation, immediately stop the engine, investigate the cause and completely repair before restarting.

1-3 Safety Check after Work

- ① For adjusting, repairing or cleaning, choose a flat place and pull the parking brake.
- ② When doing any work under the raised mower portion or machine, use proper supports to hold it up.
- ③ Keep the caution marks and explanations clean at all times. If they are lost or damaged, attach new labels.
- ④ Do not remodel the machine without permission, otherwise malfunction or danger will result.
- ⑤ Do not store the machine indoors with the fuel left in the tank.
- ⑥ Cool the engine before covering the machine with a sheet, etc.

2. Names of Portions



(Fig. 1)

No.	Name	No.	Name
①	Handle	⑧	Clutch lever for rear mower
②	Traveling clutch lever	⑨	Lifting lever (for rear mower)
③	Clutch lever for right/left mowers	⑩	Left blade reel cylinder
④	Change lever	⑪	Rear blade reel cylinder
⑤	Brake pedal	⑫	Side brake
⑥	Diff-lock pedal	⑬	Throttle lever
⑦	Lifting lever (for right/left mowers)	⑭	Engine stop switch

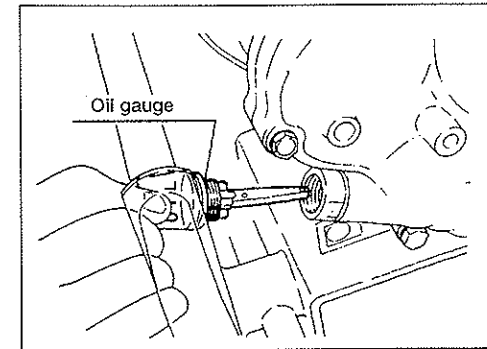
Table 1

3. Inspection before Use



3-1 Inspection of Engine Oil

For details, see the separate Handling Manual for Engine.
Check the engine oil at a flat place. Put in the oil gauge (without screwing it in) through the oil filter port to check that the oil level is between the two knurl lines on the gauge. If not, supply oil.

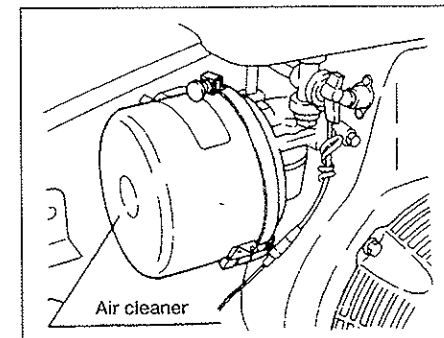


(Fig. 2)

3-2 Inspection of Air Cleaner



For details, see the separate Handling Manual for Engine.
If the air cleaner element is heavily contaminated, engine starting failure, insufficient output, or malfunction will result, and the engine life will be extremely shortened as well. For the cleaning method, see 7-2 Cleaning of Air Cleaner.



(Fig. 3)

3-3. Inspection of Fuel



When fuel is insufficient, supply lead-free gasoline for automobiles.
The tank capacity is approx. 6 litres.

3-4. Inspection of Oil Leakage

Check the bottom of the machine for oil leakage.

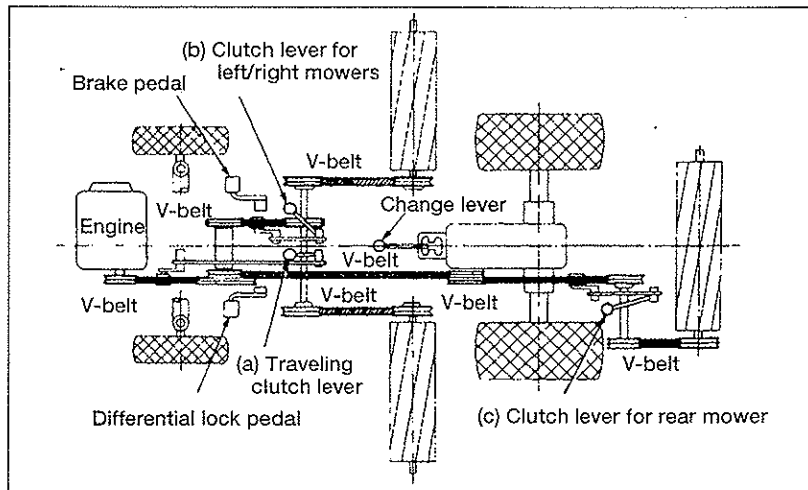
3-5. Inspection of Tires

The mowing height changes according to the pneumatic pressure of the tire.
Keep the pneumatic pressure constant at all times.

	Size of tire	Pneumatic pressure
Front wheel	4.00-5	2.0 kg/cm ²
Rear wheel	18x8.50-8	0.8 kg/cm ²

3-6. Inspection of Belts

Excessive belt tension will damage bearings or break shafts. If belts are excessively loose, slippage and belt damage will result, or the reel rotation and operation speed will not be high enough for mowing. Check the belt for appropriate tension and make sure that there is no crack.



(Fig.4)

Belts are installed as shown in Fig.4. (6 types; 8 in total)

For adjustment of belts, refer to "4-11 Adjustment of Belt Tension."

3-7. Inspection of Mowers

Check the three mower units for the mowing height and sharpness of blades.

4. Operation and Adjustment of Each Section

4-1. Start / Stop of Engine



For details, refer to the engine Handling manual.

1) Start

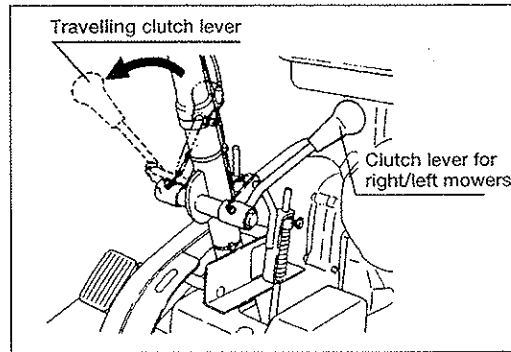
- ① Open the fuel cock, which is under the fuel tank.
- ② Move the throttle lever from the low-speed side slightly to the high-speed side.
- ③ Pull the choke button. Pull the button halfway for restarting, as necessary.
- ④ Pull the start rope hard.
- ⑤ After the engine has started, slowly return the choke button.
- ⑥ Warm up the engine at a slow speed for 1-2 minutes without a load.
- ⑦ Gradually move the throttle lever to high-speed side.

2) Stop

- ① Move the throttle lever to the slow-speed, and continue idling for 1-2 minutes.
- ② Turn off the engine switch.
- ③ Close the fuel cock.

4-2 Operation of Travelling Clutch Lever

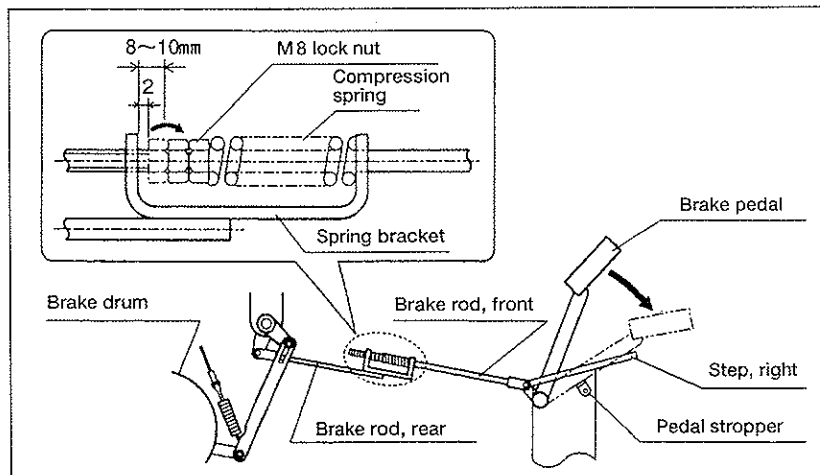
Pull the lever slowly to prevent sudden starting. Start the machine while allowing the belt to slip in the same way as clutch-slipping. (Fig. 5)



(Fig. 5)

4-3 Operation and Adjustment of Brake Pedal

To stop the machine, depress the brake pedal with your right foot until it hits the pedal stopper. If the pedal play increases or the brake does not work properly even if the pedal is depressed up to the stopper, shorten the rod by loosening the lock nut and screwing in the nut. Adjust it so that the clearance between the spring bracket and the double nut will be 8-10mm when the pedal is depressed up to the stopper. (If smaller than 8mm, the brake does not work properly, and if larger than 10mm, the brake may be damaged.) (Fig. 7)



(Fig. 6)

4-4 Operation and Adjustment of Diff-Lock Pedal

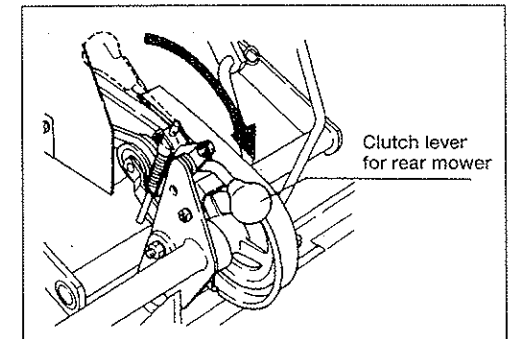
If the pedal on the left is depressed, the differential device is locked to enhance linearity, thus preventing slipping. If the pedal play increases, make adjustment with the adjusting bolts at both ends of the wire.

4-5 Operation of Clutch Lever for Right/Left Mowers

Pull this lever to rotate the right/left mowers. The right and left mowers rotate simultaneously.

4-6 Operation of Clutch Lever for Rear Mower

Pull this lever to rotate the rear mower.

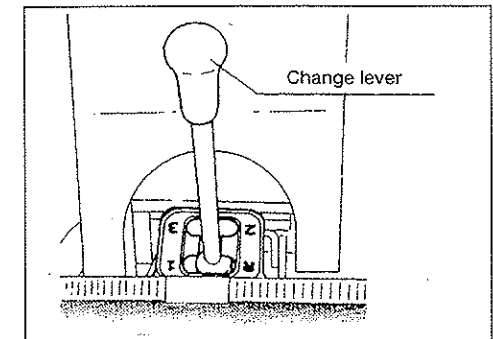


(Fig. 7)

4-7 Operation of Change Lever

A direct change system is adopted for the change lever. The speed change positions are shown in the figure.

◆ Do not change the lever position during travelling.



(Fig. 8)

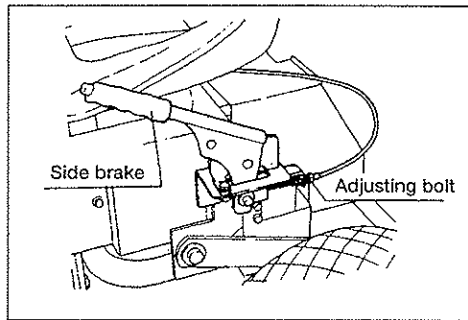
4-8 Operation and Adjustment of Side Brake

1) Operation

The side brake is located on the left side of the saddle. Pull it completely for parking.

While pressing the pushbutton, return the brake lever correctly.

- ◆ For parking on a hill, apply scotch in addition to pulling the side brake.



(Fig. 9)

2) Adjustment

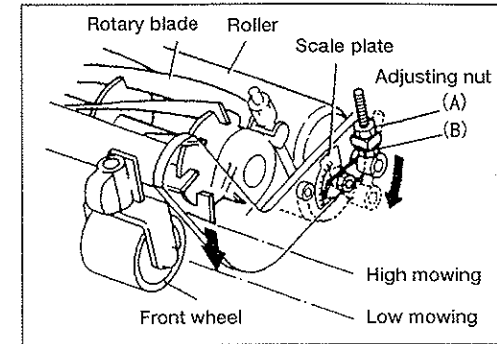
If the side brake does not work properly, make adjustment with the adjusting bolts at both ends of the wire. (Fig. 9)

4-9 Adjustment of Mowing Height

The mowing height is adjusted by moving up/down the roller.

- ① To increase mowing height
→ Loosen the nut A and lower the roller.
- ② To decrease mowing height
→ Loosen the nut B and raise the roller.

- ◆ The front wheel is provided to prevent the blade reel cylinder from damaging a convex portion of the lawn surface. It should not be grounded but should be raised 10-20mm.

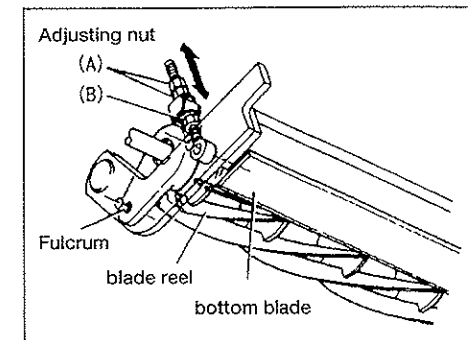


(Fig. 10)

4-10 Adjustment of Blade Engagement

To adjust the engagement between the blade reel cylinder and bottom blade, bring the edges entirely into slight contact with each other by using the adjusting nuts so that newspaper can be cut.

- ① If gap is created between edges
→ Slightly loosen the nut B and tighten A.
 - ② If tight and difficult to turn
→ Slightly loosen the nut A and tighten B.
- ◆ If the newspaper cannot be cut at some places even if the blades are in slight contact, grind them by lapping in good time.



(Fig. 11)

4-11 Adjustment of Belt Tension

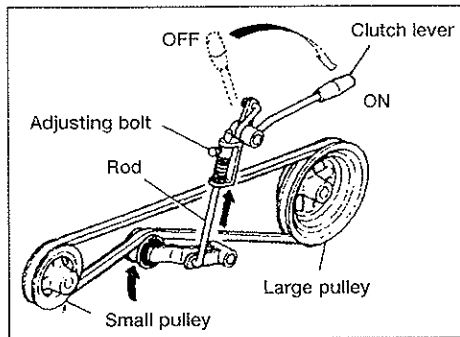
The belt tension is adjusted by changing the rod length with the adjusting bolt or nut.

1) Belt tension clutch (3 places)

Loosen the adjusting bolt, and change the length of the rod.

◆ Make adjustment so that the belt and large pulley are stopped when the clutch lever is set to OFF.

- ① Traveling clutch
- ② Right/left mowers clutch
- ③ Rear Mower clutch

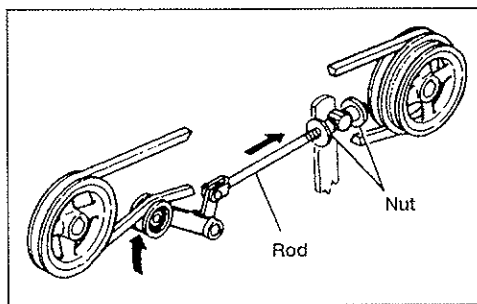


(Fig. 12)

2) Portions where belt is always tensioned (2 places)

Loosen the adjusting nut, and change the length of the rod.

- ① Between mission pulley and large pulley on the intermediate shaft.
- ② Between outside pulleys of rear mower portion.



(Fig. 13)

5. Mowing Work



Do not put your hands and feet near the blade reel cylinder when it is rotating.

5-1 How to Operate

- ① Before starting the engine, check the following points.
 - The change lever must be in the neutral position.
 - The travelling clutch lever must be in the "OFF" position.
- ② Start the engine.
- ③ Pull the clutch levers of the right/left mowers and rear mower.
- ④ Slowly pull the travelling clutch lever in the same way as clutch-slipping.
- ◆ When the machine is started through the above operations, the blade reel cylinders rotate and the mowing work starts.

5-2 Adjustment before Work

- ① Check the sharpness of the blade. The blade is sharp if newspaper can be cut well.
- ② Try mowing to see if the mowing height of the three mowers is the same.

6. Method of Lapping

Lapping is intermediate finishing that is required temporarily before sharpening the blade. Both blade reel cylinder and bottom blade are simultaneously lapped by applying the abrasive while turning the blade reel cylinder in the direction opposite to the mowing direction.

1) Things to be prepared (special-order products)

- ① Lapping machine Baroness RM20
- ② Abrasive FEL-PRO Clover Reel Sharpening Compound (genuine product)
- ③ Brush Paint brush
- ④ Tool 17 spanner, etc.
- ⑤ Others Strips of newspaper, gloves, etc.

2) Procedure

For details, see the Handling Manual of Lapping Machine.



- ① Bring the blade reel cylinder and the bottom blade into slight contact with each other uniformly at right and left. Cut newspaper into strips and check which portion of the blade is dull.
 - ② Connect the lapping machine and the blade reel cylinder shaft of the mower.
 - ③ Rotate the blade reel cylinder in the direction opposite to the mowing direction and apply the abrasive with a brush to the portion where the newspaper was cut well.
 - ④ Idle the machine for a while, and then switch off the lapping machine when contact noise is no longer heard.
 - ⑤ Tially cut the newspaper strips with the entire width of the blade reel cylinder, and note portions of cutting well and not well.
- ◆ Repeat the above steps ①~⑤ When the blade reel cylinder and bottom blade are uniformly engaged (brought into contact) with each other entirely, wash off the abrasive to finish the work.



- ◆ The edges are very sharp. Be sure to wear gloves when touching the blades.
- ◆ The blade reel cylinder must be rotated in the direction opposite to the mowing direction.
- ◆ It is dangerous when you apply the abrasive with a brush to the rotating blade reel cylinder. Be careful that your hand and brush will not be caught.
- ◆ When cutting the newspaper, pay attention to your fingers that will turn the blade reel cylinder.
- ◆ Should the abrasive enter your eyes, immediately wash your eyes with water. If the condition is serious, consult a doctor.

7. Maintenance and Inspection of Portions

Before checking, clean the machine body. The parts of operating portions and consumables should be periodically maintained and replaced as necessary.

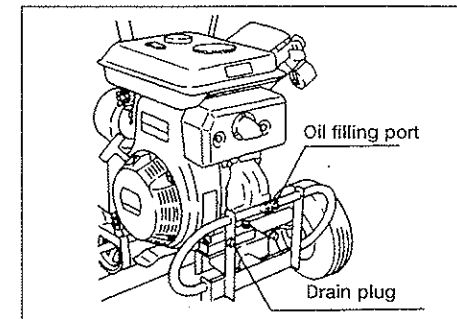
7-1 Change of Engine Oil



For details, see the Handling Manual for Engine.

If the engine oil is contaminated or running short or if poor-quality oil is used, the life of the engine will be extremely shortened. For changing oil, drain the oil through the drain plug when the engine is stopped and warm.

First time	after 20-hour operation
Second time and later	every 50-hour operation
Oil quantity	approx. 1.2 litres
SAE viscosity	SAE30 in summer, SAE20 in winter



(Fig. 14)

7-2 Cleaning of Air Cleaner



For details, see the Handling Manual for Engine.

Periodically clean the air cleaner so that clean air can be supplied to the engine.

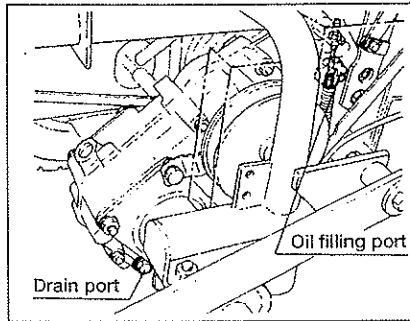
- ① Clean the urethane foam with white kerosene, and then immerse it in a mixture of three parts white kerosene and one part engine oil, and firmly squeeze before installing.
- ② Clean the element with white kerosene, immerse it in the mixture of three parts white kerosene and one part engine oil, and then shake/squeeze it before installing.

7-3 Change of Mission Oil

The oil filling port is located at the top on the right side of the mission case.

The drain port is located at the bottom on the right side of the mission case.

First time	after 50-hour operation
Second time and later	every 300 hours or every year
Oil quantity	approx. 2 litres
Specified oil	Oil No. 90 for automobile



(Fig. 15)

7-4 Oiling and Greasing 50h

Always supply oil to moving parts and periodically grease them with grease nipple.

7-5 Inspection of Parts

Check and maintain bearings, various seals, belts, pulleys, wires, tires, plugs, etc. periodically, and replace parts as necessary.

7-6 Maintenance List

◆Do maintenance earlier than the time shown below as necessary.

Maintenance item		Hourly	50H	200H	Yearly
Engine	Inspection/supply of engine oil	○			
	Change of engine oil		○		
	Cleaning of ignition plugs		○		
	Cleaning of air cleaner		○		
	Cleaning of fuel strainer			○	
	Adjustment of ignition plug clearance			○	
	Removal of cylinder head carbon				○
	Cleaning of carburetor				○
	Checking/fitting of inlet valve/exhaust valve				○
	Overhaul				○
Machine	Inspection of tire air pressure	○			
	Inspection of looseness of screws	○			
	Inspection of fuel level	○			
	Inspection of oil leakage	○			
	Inspection of cutting quality of blade	○			
	Oil supply to sliding portions		○		
	Inspection of belt tension		○		
	Adjustment of wires		○		

Table 2

8. Inspection for Long Storage

For the engine, see the Handling Manual of Engine.



1) Changing oil

Change the engine oil/mission oil, etc.

2) Oiling

Supply oil to moving parts, and apply grease to the blade reel cylinder and bottom blade to prevent rusting.



50h

3) Draining fuel

If the engine is not used for one month or longer, drain the fuel from the fuel tank and carburetor to prevent defective starting and operation due to deterioration of the fuel.

4) Air pressure of tires

Set the air pressure slightly higher than the standard, and place the tires on plates to protect them from humidity.

5) Storage place

Cover the machine and store it at a dry place not exposed to rain.

9. Specifications

1) Mowers

Number of units	3
Mowing width	188cm
Reel diameter	16.3cm
Reel width	Right/left 66cm, rear 77cm
Number of reel blades	7 (5 optional)
Mowing height	13-50mm

Table 3

2) Engine

Name	Robin DY35D
Type	Air-cooled 4-cycle diesel one-lunger
Total displacement	348cc
Continuous rated output	6.5PS/3600rpm
Maximum output	7.5PS/3600rpm
Maximum torque	1.75kgm/2400rpm
Specified lubricating oil	Diesel engine oil SAE30 API CF/SF
Quantity of lubricating oil	1 litres
Fuel tank capacity	4.5 litres
Note	Recommended engine speed (Factory setting) Max. 3000rpm Idling 1200rpm

Table 4

3) Machine

Number of speeds	Forward : 3 speeds, backward : 1 speed
Speed	1st speed : 3.1km/h
	2nd speed : 6.4km/h
	3rd speed : 9.4km/h
	Back : 3.1km/h
Grade ability	20
Travelling clutch	Belt tension type
Brake	Internal expanding type 5 inches
Wheel	Front 4.00-5
	Rear 18x8.50-8
Minimum turning radius	230cm
Total length	215cm
Total width	208cm
Total height	102cm
Total weight	350kg (with mowers)
Efficiency	84a/h (mowing width x 2nd speed x 0.7)

Table 5

Parts Catalog

Note

(Inquiry about This Machine)

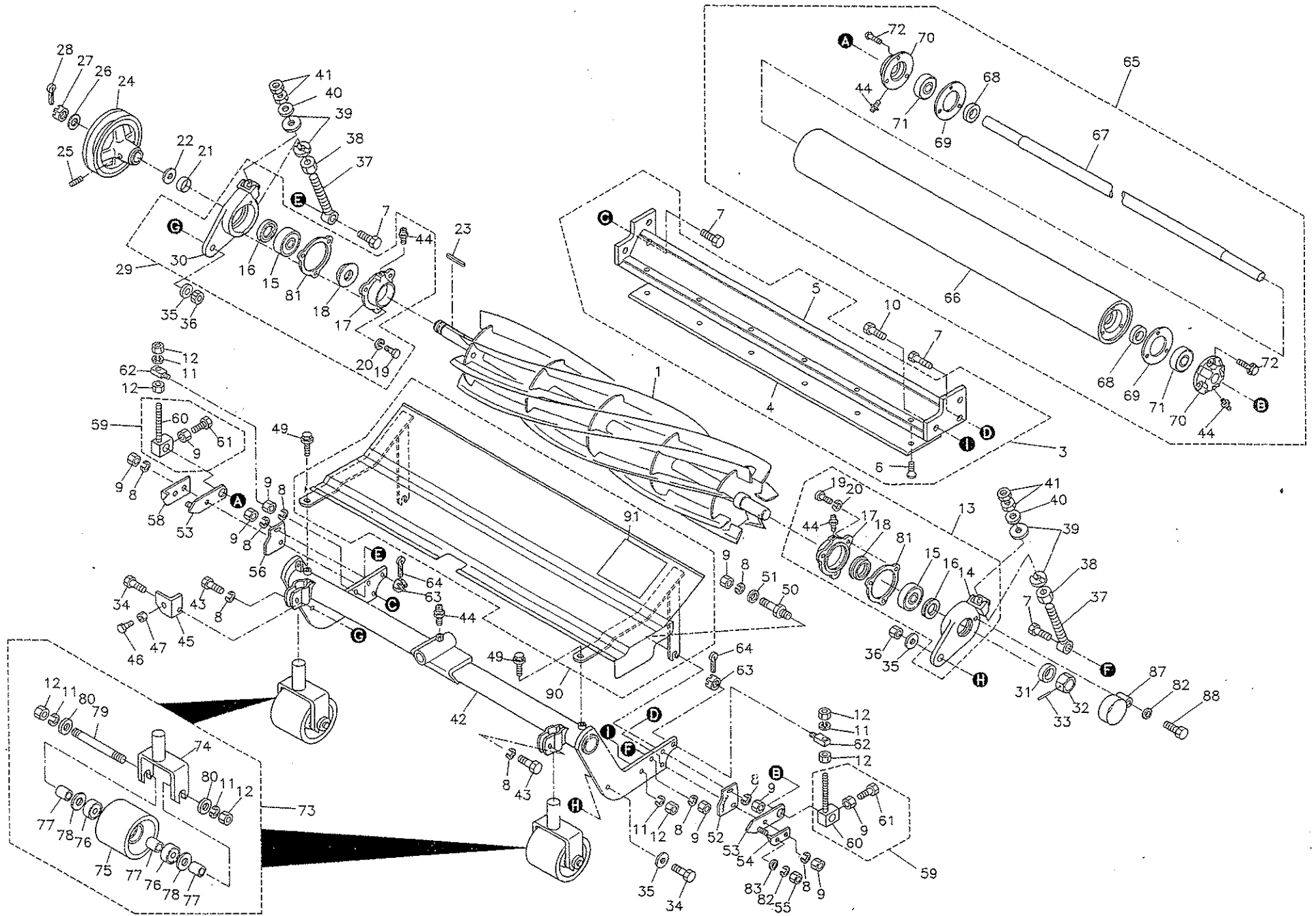
Since the type may be changed sequentially, inform us also of the machine type and No.
The contents of the catalog are subject to change without notice.

(Ordering Parts)

Parts are controlled with a computer. To prevent shipping of wrong parts,
inform us of the catalog No., code No., and part name when ordering parts.

Example	Catalog No.	Code No.	Part name	Quantity
	9-2	LM180A-0802Z3	Mission pulley	1

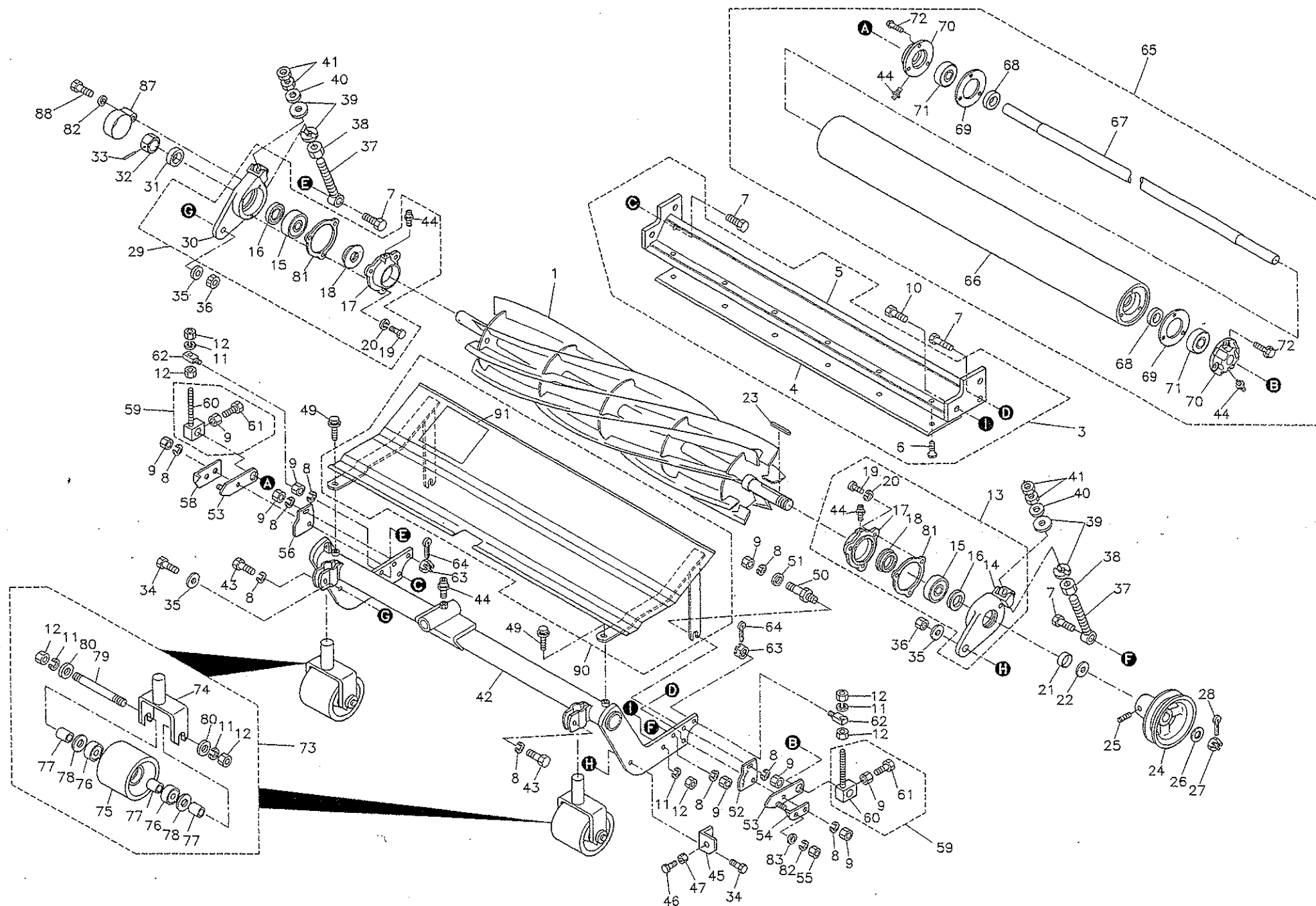
1 Left Mower Portion



Catalog No.	Code No.	Part Name	Qty /Unit	Common Part	Retail Price
1-1	K 2 8 1 8 5 0 L 7 A R	Blade reel cylinder 660-7L	1		
1-2	K 2 8 1 8 5 0 L 5 A R	Blade reel cylinder 660-5L (option)	1		
1-3	K 8 0 2 2 0 0 0 0 2 0	180 right-left knife ass'y	1	○	
1-4	K 2 5 1 0 0 0 0 0 3 0	7 bottom blade 85-662	1	○	
1-5	K 7 4 4 2 0 0 0 0 6 R	Bottom blade mount 732	1	○	
1-6	K 0 0 7 1 0 0 0 0 9 2	10 heat-treated-countersunk head screw 20	6	○	
1-7	K 0 0 0 0 1 0 0 3 5 2	10 bolt 35	4	○	
1-8	K 0 2 0 0 1 0 0 0 0 2	10S washer	10	○	
1-9	K 0 1 0 0 1 0 0 0 0 2	10 nut	10	○	
1-10	K 0 0 0 0 1 2 0 3 5 2	12 bolt 35	2	○	
1-11	K 0 2 0 0 1 2 0 0 0 2	12S washer	6	○	
1-12	K 0 1 0 0 1 2 0 0 0 2	12 nut	10	○	
1-13	L M 1 8 0 B - 0 1 0 6 Z 0	Reel bracket metal left B Ass'y	1set	○	
1-14	L M 1 8 0 A - 0 1 0 9 Z 2	Reel bracket metal left B	1	○	
1-15	K 0 6 0 2 0 6 3 0 4 0	Bearing 6304Z	2	○	
1-16	K 0 8 6 0 0 0 0 0 5 0	Dustproof seal	2	○	
1-17	K 6 9 0 3 0 0 0 0 4 2	Housing cover	2	○	
1-18	K 0 8 2 2 5 4 2 0 8 0	Oil seal MHSA25428	2	○	
1-19	K 0 0 0 0 0 6 0 1 5 2	6 bolt 15	6	○	
1-20	K 0 2 0 0 0 6 0 0 0 2	6S washer	6	○	
1-21	K 6 2 1 2 0 0 0 1 6 2	20.2 STKM collar 25.4 4.75	1	○	
1-22	K 5 0 3 0 5 2 0 4 0 0	0.5C2801P washer 2040	1	○	
1-23	K 0 5 5 0 0 0 0 0 5 0	5 x 5 x 42 special key	1	○	
1-24	K 2 4 2 0 0 0 0 0 1 D	B1V pulley 20134	1	○	
1-25	K 0 0 2 3 0 8 0 0 8 1	8 hollow set 8	2	○	
1-26	K 5 0 7 3 2 2 0 4 0 2	3.2 SPHC washer 2040	1	○	
1-27	K 0 1 7 0 0 0 0 0 1 2	20 slotted special nut	1	○	
1-28	K 0 3 0 0 0 3 2 3 6 2	3.2 cotter pin 36	1	○	
1-29	L M 1 8 0 B - 0 1 1 3 Z 0	Reel bracket metal right A Ass'y	1set	○	
1-30	L M 1 8 0 A - 0 1 1 0 Z 2	Reel bracket metal right A	1	○	
1-31	K 4 0 3 1 0 0 0 2 4 0	Waterproof cap	1		
1-32	K 6 0 8 0 0 0 0 0 3 2	Lapping shaft	1		
1-33	K 0 3 2 0 0 3 0 2 5 1	3 spring pin 25	1	○	
1-34	L M 1 8 0 A - 0 1 2 0 Z 2	Shaft bolt	2	○	
1-35	K 5 0 7 3 2 1 5 3 0 2	3.2 PHC washer 14.530	3	○	
1-36	K 0 1 4 5 1 4 0 0 0 2	14U nut P1.5	2	○	
1-37	K 6 5 1 1 0 0 0 0 9 2	Cutter adjusting bolt 100	2	○	
1-38	L M 1 8 0 A - 0 1 3 5 Z 2	M10 fine nut	2	○	
1-39	K 6 5 0 0 0 0 0 1 0 2	5SS41 washer 10.522	4	○	
1-40	K 5 0 5 1 0 1 0 2 0 0	1C5191P washer 1020	2	○	
1-41	K 0 1 0 6 1 0 0 0 0 2	10 nut P1	4	○	
1-42	L M 1 8 0 B - 0 1 4 0 Z R	Mower frame left	1	○	
1-43	K 0 0 1 0 1 0 0 2 5 2	10 heat-treated bolt 25	2	○	
1-44	K 1 4 4 0 0 0 0 0 1 2	Grease nipple	5	○	
1-45	L M 1 8 0 A - 1 0 1 5 A 2	Scraper for left mower	1	○	

Catalog No.	Code No.	Part Name	Qty /Unit	Common Part	Retail Price
1-46	K 0 0 0 0 0 6 0 4 0 2	6 bolt 40	1	○	
1-47	K 0 1 0 0 0 6 0 0 0 2	6 nut	1	○	
1-48					
1-49	K 0 0 0 7 0 8 0 2 0 2	8 bolt 20SW	2	○	
1-50	L M 1 8 0 A - 0 1 4 7 Z 2	Reel cover bolt	2	○	
1-51	K 5 0 0 0 1 0 0 0 0 2	10 Washer	2	○	
1-52	L M 1 8 0 B - 0 1 6 0 Z 0	Mowing height scale plate left	1	○	
1-53	L M 1 8 0 B - 0 1 5 0 A 2	Mowing height adjusting plate	2	○	
1-54	L M 1 8 0 A - 0 2 5 1 Z 2	Mowing height adjusting needle left	1	○	
1-55	K 0 1 0 0 0 8 0 0 0 2	8 nut	2	○	
1-56	L M 1 8 0 B - 0 1 6 2 Z 0	Mowing height scale plate right	1	○	
1-57					
1-58	L M 1 8 0 A - 0 2 5 2 Z 2	Mowing height adjusting needle right	1	○	
1-59	L M 1 8 0 B - 0 1 5 3 Z 0	Mowing height adjusting screw Ass'y	2sets	○	
1-60	L M 1 8 0 B - 0 1 5 4 Z 2	Mowing height adjusting screw	2	○	
1-61	K 0 0 0 0 1 0 0 2 5 2	10 bolt 25	2	○	
1-62	L M 1 8 0 B - 0 1 5 6 Z 2	Fixed shaft	2	○	
1-63	K 0 1 2 4 1 2 0 0 0 2	12 slotted nut low	2	○	
1-64	K 0 3 0 0 0 3 2 2 5 2	3.2 cotter pin 25	2	○	
1-65	L M 1 8 0 B - 0 1 5 8 A 0	Roller assy	1set	○	
1-66	K 7 4 0 0 0 0 0 1 6 D	76.2 roller 674	1		
1-67	L M 1 8 0 B - 0 1 5 9 Z 0	Roller shaft	1		
1-68	K 0 6 0 2 0 6 2 0 3 0	Bearing 6203Z	2		
1-69	K 4 0 1 5 1 3 6 6 5 0	1 fiber 3665	2		
1-70	K 6 8 1 0 0 0 0 0 7 0	Seal housing	2		
1-71	K 0 8 2 1 7 3 0 0 8 0	Oil seal MHSA1730080	2		
1-72	K 0 0 0 6 0 6 0 1 5 2	6 bolt 15S	6		
1-73	L M 1 8 0 B - 1 2 0 1 Z 0	Front roller Ass'y	2sets	○	
1-74	L M 1 8 0 A - 1 2 0 4 Z 2	Front wheel bracked metal	2	○	
1-75	K 6 8 0 9 0 0 0 0 2 0	Roller 76 66	2	○	
1-76	K 0 6 0 8 0 6 2 0 1 0	Bearing 62012RS	4	○	
1-77	K 6 2 1 1 0 0 0 0 5 2	12.7 SGP collar 17.3163	6	○	
1-78	K 5 0 3 0 5 1 2 3 0 0	0.5 C2801P washer 1230	4	○	
1-79	K 0 0 7 0 0 0 0 0 3 2	12 double-end stud 115	2	○	
1-80	K 5 0 0 0 1 2 0 0 0 2	12 washer	4	○	
1-81	K 4 0 1 1 0 0 0 1 5 0	Packing	2	○	
1-82	K 0 2 0 0 0 8 0 0 0 2	8S washer	3	○	
1-83	K 5 0 0 0 0 8 0 0 0 2	8 washer	2	○	
1-84					
1-85					
1-86					
1-87	L M 1 8 0 B - 0 1 6 4 Z 2	Shaft cover	1		
1-88	K 0 0 0 0 0 8 0 4 0 2	8 bolt 40	1		
1-89					
1-90	L M 1 8 0 B S 0 1 8 0 A 0	Reel cover left for export COMP	1		
1-91	K 4 2 0 5 0 0 1 2 8 0	DANGER Mark	1		

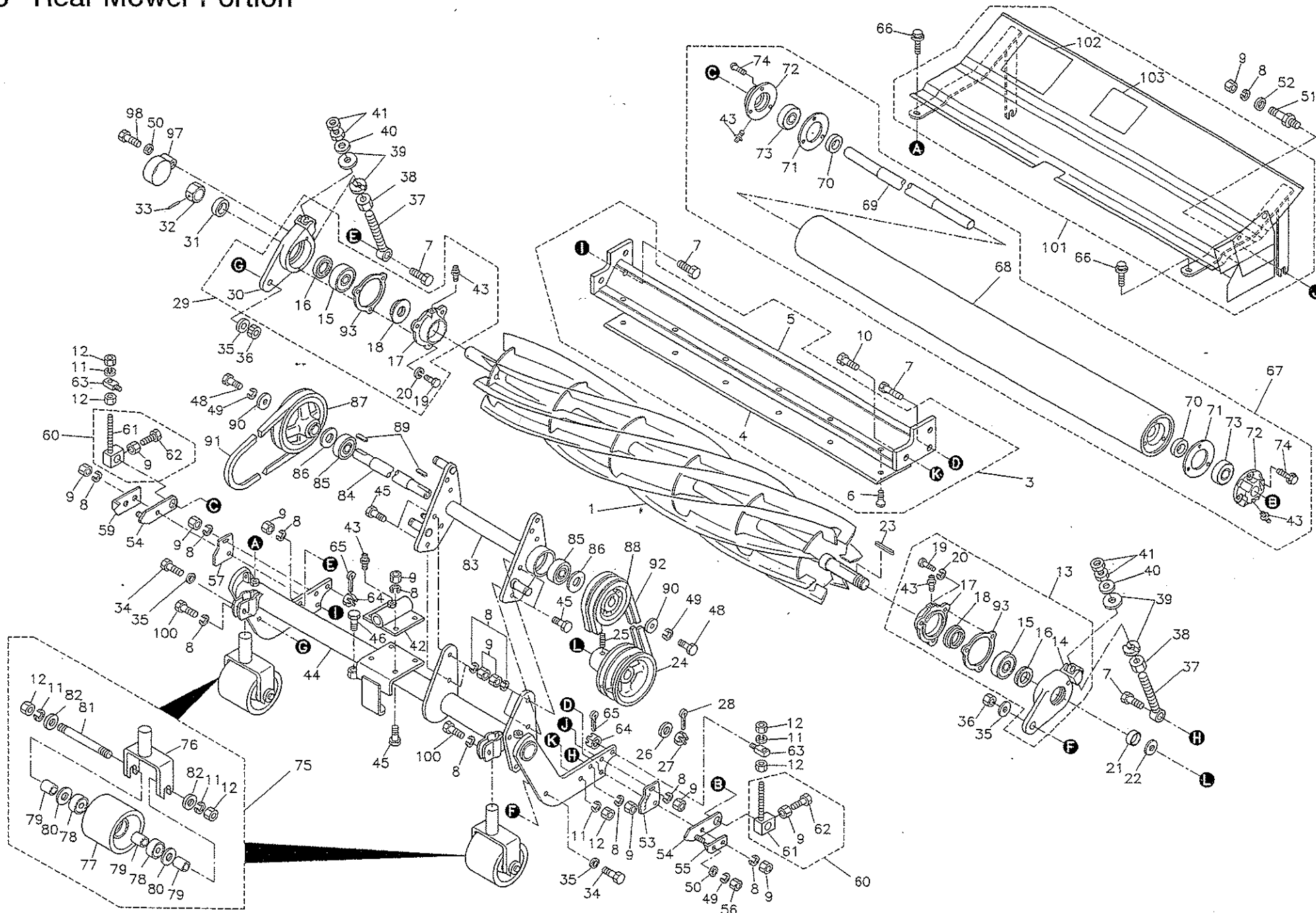
2 Right Mower Portion



Catalog No.	Code No.	Part Name	Qty /Unit	Common Part	Retail Price
2-1	K 2 8 1 8 5 0 R 7 A R	Blade reel cylinder 660-7R	1		
2-2	K 2 8 1 8 5 0 R 5 A R	Blade reel cylinder 660-5R (option)	1		
2-3	K 8 0 2 2 0 0 0 0 2 0	180 right-left knife Ass'y	1	○	
2-4	K 2 5 1 0 0 0 0 0 3 0	7 bottom blade 85-662	1	○	
2-5	K 7 4 4 2 0 0 0 0 6 R	Bottom blade mount 732	1	○	
2-6	K 0 0 7 1 0 0 0 0 9 2	10 heat-treated-countersunk head screw 20	6	○	
2-7	K 0 0 0 0 1 0 0 3 5 2	10 bolt 35	4	○	
2-8	K 0 2 0 0 1 0 0 0 0 2	10S washer	10	○	
2-9	K 0 1 0 0 1 0 0 0 0 2	10 nut	10	○	
2-10	K 0 0 0 0 1 2 0 3 5 2	12 bolt 35	2	○	
2-11	K 0 2 0 0 1 2 0 0 0 2	12S washer	6	○	
2-12	K 0 1 0 0 1 2 0 0 0 2	12 nut	10	○	
2-13	L M 1 8 0 B - 0 1 0 7 Z 0	Reel bracket metal left A Ass'y	1set	○	
2-14	L M 1 8 0 A - 0 1 0 8 Z 2	Reel bracket metal left A	1	○	
2-15	K 0 6 0 2 0 6 3 0 4 0	Bearing 6304Z	2	○	
2-16	K 0 8 6 0 0 0 0 0 5 0	Dustproof seal	2	○	
2-17	K 6 9 0 3 0 0 0 0 4 2	Housing cover	2	○	
2-18	K 0 8 2 2 5 4 2 0 8 0	Oil seal MHSA25428	2	○	
2-19	K 0 0 0 0 0 6 0 1 5 2	6 bolt 15	6	○	
2-20	K 0 2 0 0 0 6 0 0 0 2	6S washer	6	○	
2-21	K 6 2 1 2 0 0 0 1 6 2	20.2 STKM collar 25.4 4.75	1	○	
2-22	K 5 0 3 0 5 2 0 4 0 0	0.5 C2801P washer 2040	1	○	
2-23	K 0 5 5 0 0 0 0 0 5 0	5 x 5 x 42 special key	1	○	
2-24	K 2 4 2 0 0 0 0 0 1 2	B1V pulley 20134	1	○	
2-25	K 0 0 2 3 0 8 0 0 8 1	8 hollow set 8	2	○	
2-26	K 5 0 7 3 2 2 0 4 0 2	3.2 SPHC washer 2040	1	○	
2-27	K 0 1 7 0 0 0 0 0 1 2	20 slotted special nut	1	○	
2-28	K 0 3 0 0 0 3 2 3 6 2	3.2 cotter pin 36	1	○	
2-29	L M 1 8 0 B - 0 1 1 2 Z 0	Reel bracket metal right B Ass'y	1set	○	
2-30	L M 1 8 0 A - 0 1 1 1 Z 2	Reel bracket metal right B	1	○	
2-31	K 4 0 3 1 0 0 0 2 4 0	Waterproof cap	1		
2-32	K 6 0 8 0 0 0 0 0 3 2	Lapping shaft	1		
2-33	K 0 3 2 0 0 3 0 2 5 1	3 spring pin 25	1	○	
2-34	L M 1 8 0 A - 0 1 2 0 Z 2	Shaft bolt	2	○	
2-35	K 5 0 7 3 2 1 5 3 0 2	3.2 PHC washer 14.530	3	○	
2-36	K 0 1 4 5 1 4 0 0 0 2	14U nut P1.5	2	○	
2-37	K 6 5 1 1 0 0 0 0 9 2	Cutter adjusting bolt 100	2	○	
2-38	L M 1 8 0 A - 0 1 3 5 Z 2	M10 fine nut	2	○	
2-39	K 6 5 0 0 0 0 0 1 0 2	5SS41 washer 10.522	4	○	
2-40	K 5 0 5 1 0 1 0 2 0 0	1C5191P washer 1020	2	○	
2-41	K 0 1 0 6 1 0 0 0 0 2	10 nut P1	4	○	
2-42	L M 1 8 0 B - 0 1 4 1 Z R	Mower frame right	1	○	
2-43	K 0 0 1 0 1 0 0 2 5 2	10 heat-treated bolt 25	2	○	
2-44	K 1 4 4 0 0 0 0 0 1 2	Grease nipple	5	○	
2-45	L M 1 8 0 A - 1 0 2 3 A 2	Scraper for right mower	1	○	

Catalog No.	Code No.	Part Name	Qty /Unit	Common Part	Retail Price
2-46	K 0 0 0 0 0 6 0 4 0 2	6 bolt 40	1	○	
2-47	K 0 1 0 0 0 6 0 0 0 2	6 nut	1	○	
2-48					
2-49	K 0 0 0 7 0 8 0 2 0 2	8 bolt 20SW	2	○	
2-50	L M 1 8 0 A - 0 1 4 7 Z 2	Reel cover bolt	2	○	
2-51	K 5 0 0 0 1 0 0 0 0 2	10 washer	2	○	
2-52	L M 1 8 0 B - 0 1 6 0 Z 0	Mowing height scale plate left	1	○	
2-53	L M 1 8 0 B - 0 1 5 0 A 2	Mowing height adjusting plate	2	○	
2-54	L M 1 8 0 A - 0 2 5 1 Z 2	Mowing height adjusting needle left	1	○	
2-55	K 0 1 0 0 0 8 0 0 0 2	8 nut	2	○	
2-56	L M 1 8 0 B - 0 1 6 2 Z 0	Mowing height scale plate right	1	○	
2-57					
2-58	L M 1 8 0 A - 0 2 5 2 Z 2	Mowing height adjusting needle right	1	○	
2-59	L M 1 8 0 B - 0 1 5 3 Z 0	Mowing height adjusting screw Ass'y	2sets	○	
2-60	L M 1 8 0 B - 0 1 5 4 Z 2	Mowing height adjusting screw	2	○	
2-61	K 0 0 0 0 1 0 0 2 5 2	10 bolt 25	2	○	
2-62	L M 1 8 0 B - 0 1 5 6 Z 2	Fixed shaft	2	○	
2-63	K 0 1 2 4 1 2 0 0 0 2	12 Slotted nut low	2	○	
2-64	K 0 3 0 0 0 3 2 2 5 2	3.2 cotter pin 25	2	○	
2-65	L M 1 8 0 B - 0 1 5 8 A 0	Roller assy	1set	○	
2-66	K 7 4 0 0 0 0 0 1 6 D	76.2 roller 674	1		
2-67	L M 1 8 0 B - 0 1 5 9 Z 0	Roller shaft	1		
2-68	K 0 6 0 2 0 6 2 0 3 0	Bearing 6203Z	2		
2-69	K 4 0 1 5 1 3 6 6 5 0	1 fiber 3665	2		
2-70	K 6 8 1 0 0 0 0 0 7 0	Seal housing	2		
2-71	K 0 8 2 1 7 3 0 0 8 0	Oil seal MHSA1730080	2		
2-72	K 0 0 0 6 0 6 0 1 5 2	6 bolt 15S	6		
2-73	L M 1 8 0 B - 1 2 0 1 Z 0	Front roller Ass'y	2sets	○	
2-74	L M 1 8 0 A - 1 2 0 4 Z 2	Front wheel bracket metal	2	○	
2-75	K 6 8 0 9 0 0 0 0 2 0	Roller 76 66	2	○	
2-76	K 0 6 0 8 0 6 2 0 1 0	Bearing 62012RS	4	○	
2-77	K 6 2 1 1 0 0 0 0 5 2	12.7SGP collar 17.3 16.3	6	○	
2-78	K 5 0 3 0 5 1 2 3 0 0	0.5C2801P washer 1230	4	○	
2-79	K 0 0 7 0 0 0 0 0 3 2	12 double-end stud 115	2	○	
2-80	K 5 0 0 0 1 2 0 0 0 2	12 Washer	4	○	
2-81	K 4 0 1 1 0 0 0 1 5 0	Packing	2	○	
2-82	K 0 2 0 0 0 8 0 0 0 2	8S washer	3	○	
2-83	K 5 0 0 0 0 8 0 0 0 2	8 washer	2	○	
2-84					
2-85					
2-86					
2-87	L M 1 8 0 B - 0 1 6 4 Z 2	Shaft cover	1		
2-88	K 0 0 0 0 0 8 0 4 0 2	8 bolt 40	1		
2-89					
2-90	L M 1 8 0 B S 2 3 8 0 A 0	Reel cover right for export COMP	1		
2-91	K 4 2 0 5 0 0 1 2 8 0	DANGER Mark	1		

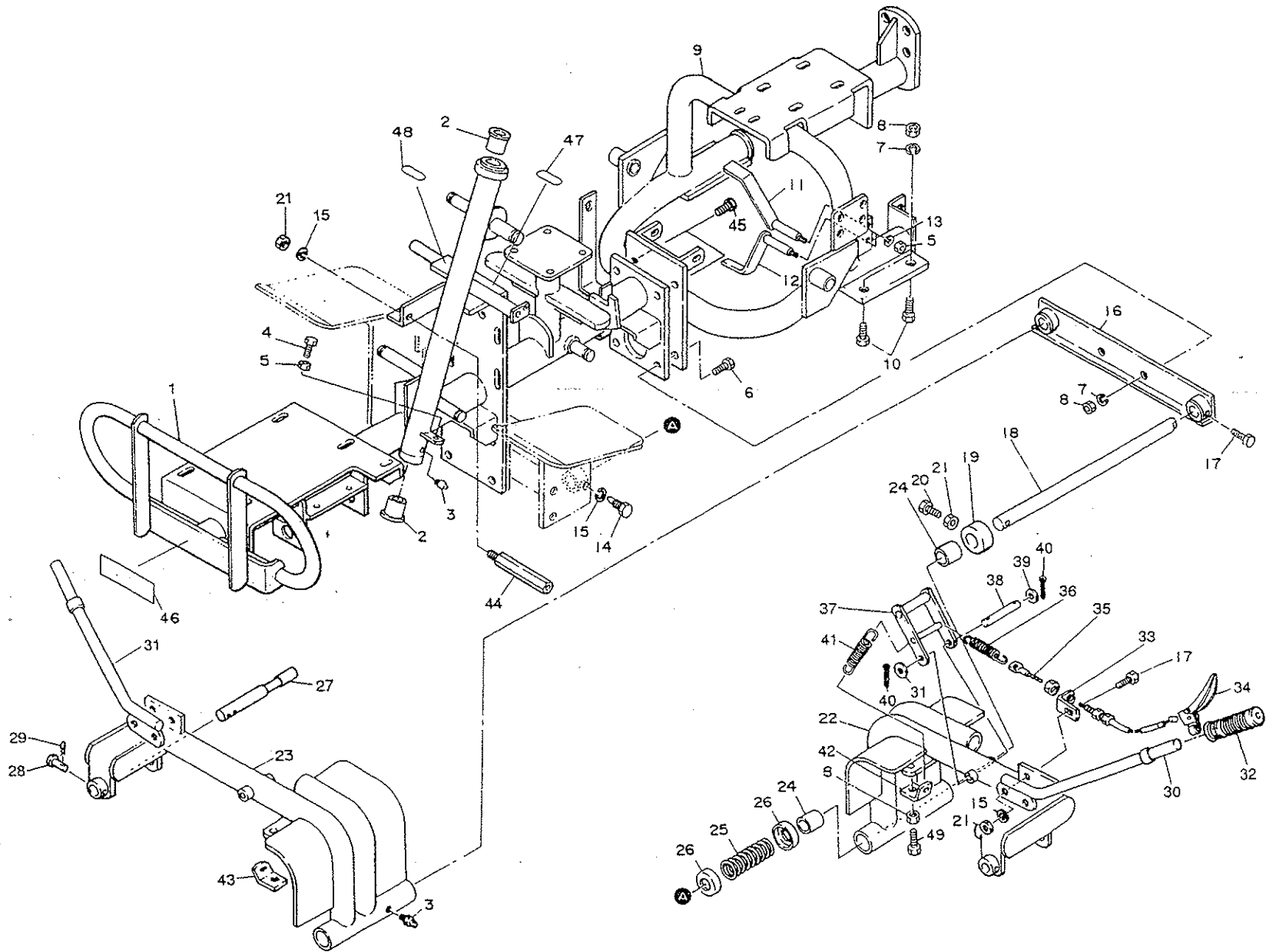
3 Rear Mower Portion



Catalog No.	Code No.	Part Name	Qty /Unit	Common Part	Retail Price
3-1	K 2 8 1 8 0 2 0 7 B R	Blade reel cylinder 766-7	1		
3-2	K 2 8 1 8 0 2 0 5 B R	Blade reel cylinder 766-5 (option)	1		
3-3	K 8 0 2 2 0 0 0 0 3 0	180 rear knife Ass'y	1	○	
3-4	K 2 5 1 0 0 0 0 0 2 0	7 Bottom blade 85-770-51	1	○	
3-5	K 7 4 4 2 0 0 0 0 7 R	Bottom blade mount 840	1	○	
3-6	K 0 0 7 1 0 0 0 0 9 2	10 heat-treated - countersunk head screw 20	7	○	
3-7	K 0 0 0 0 1 0 0 3 5 2	10 bolt 35	4	○	
3-8	K 0 2 0 0 1 0 0 0 0 2	10S washer	16	○	
3-9	K 0 1 0 0 1 0 0 0 0 2	10 nut	16	○	
3-10	K 0 0 0 0 1 2 0 3 5 2	12 bolt 35	2	○	
3-11	K 0 2 0 0 1 2 0 0 0 2	12S washer	6	○	
3-12	K 0 1 0 0 1 2 0 0 0 2	12 nut	11	○	
3-13	L M 1 8 0 B - 0 1 0 7 Z 0	Reel bracket metal left A Ass'y	1set	○	
3-14	L M 1 8 0 A - 0 1 0 8 Z 2	Reel bracket metal left A	1	○	
3-15	K 0 6 0 2 0 6 3 0 4 0	Bearing 6304Z	2	○	
3-16	K 0 8 6 0 0 0 0 0 5 0	Dustproof seal	2	○	
3-17	K 6 9 0 3 0 0 0 0 4 2	Housing cover	2	○	
3-18	K 0 8 2 2 5 4 2 0 8 0	Oil seal MHA25428	2	○	
3-19	K 0 0 0 0 0 6 0 1 5 2	6 bolt 15	6	○	
3-20	K 0 2 0 0 0 6 0 0 0 2	6S washer	6	○	
3-21	K 6 2 1 2 0 0 0 1 6 2	20.2 STKM collar 25.4 4.75	1	○	
3-22	K 5 0 3 0 5 2 0 4 0 0	0.5 C2801P washer 2040	1	○	
3-23	K 0 5 5 0 0 0 0 0 5 0	5 x 5 x 42 special key	1	○	
3-24	L M 1 8 0 A - 0 2 2 5 B D	Rear reel pulley	1	○	
3-25	K 0 0 2 3 0 8 0 0 8 1	8 hollow set 8	2	○	
3-26	K 5 0 7 3 2 2 0 4 0 2	3.2 SPHC washer 2040	1	○	
3-27	K 0 1 7 0 0 0 0 0 1 2	20 Slotted special nut	1	○	
3-28	K 0 3 0 0 0 3 2 3 6 2	3.2 cotter pin 36	1	○	
3-29	L M 1 8 0 B - 0 1 1 2 Z 0	Reel bracket metal right B Ass'y	1set	○	
3-30	L M 1 8 0 A - 0 1 1 1 Z 2	Reel bracket metal right B	1	○	
3-31	K 4 0 3 1 0 0 0 2 4 0	Waterproof cap	1		
3-32	K 6 0 8 0 0 0 0 0 3 2	Lapping shaft	1		
3-33	K 0 3 2 0 0 3 0 2 5 1	3 spring pin 25	1	○	
3-34	L M 1 8 0 A - 0 1 2 0 Z 2	Shaft bolt	2	○	
3-35	K 5 0 7 3 2 1 5 3 0 2	3.2 PHC washer 14.530	4	○	
3-36	K 0 1 4 5 1 4 0 0 0 2	14U nut P1.5	2	○	
3-37	K 6 5 1 1 0 0 0 0 9 2	Cutter adjusting bolt 100	2	○	
3-38	L M 1 8 0 A - 0 1 3 5 Z 2	M10 fine nut	2	○	
3-39	K 6 5 0 0 0 0 0 1 0 2	5SS41 washer 10.522	4	○	
3-40	K 5 0 5 1 0 1 0 2 0 0	1C5191P washer 1020	2	○	
3-41	K 0 1 0 6 1 0 0 0 0 2	10 nut P1	4	○	
3-42	L M 1 8 0 A - 0 2 9 6 A R	Rear mower oscillating metal part	1	○	
3-43	K 1 4 4 0 0 0 0 0 1 2	Grease nipple	5	○	
3-44	L M 1 8 0 B - 0 2 4 1 Z R	Mower frame rear	1	○	
3-45	K 0 0 0 0 1 0 0 3 0 2	10 bolt 30	4	○	
3-46	K 0 0 0 0 1 2 0 4 0 2	12 bolt 40	1	○	
3-47					
3-48	K 0 0 0 0 0 8 0 2 0 2	8 bolt 15	2	○	
3-49	K 0 2 0 0 0 8 0 0 0 2	8S washer	3	○	
3-50	K 5 0 0 0 0 8 0 0 0 2	8 washer	2	○	
3-51	L M 1 8 0 A - 0 1 4 7 Z 2	Reel cover bolt	2	○	

Catalog No.	Code No.	Part Name	Qty /Unit	Common Part	Retail Price
3-52	K 5 0 0 0 1 0 0 0 0 2	10 washer	2		
3-53	L M 1 8 0 B - 0 1 6 0 Z 0	Mowing height scale plate left	1	○	
3-54	L M 1 8 0 B - 0 2 6 3 A 2	Mowing height adjusting plate rear	2	○	
3-55	L M 1 8 0 A - 0 2 5 1 Z 2	Mowing height adjusting needle left	1	○	
3-56	K 0 1 0 0 0 8 0 0 0 2	8 nut	2	○	
3-57	L M 1 8 0 B - 0 1 6 2 Z 0	Mowing height scale plate right	1	○	
3-58				○	
3-59	L M 1 8 0 A - 0 2 5 2 Z 2	Mowing height adjusting needle right	1		
3-60	L M 1 8 0 B - 0 1 5 3 Z 0	Mowing height adjusting screw Ass'y	2sets	○	
3-61	L M 1 8 0 B - 0 1 5 4 Z 2	Mowing height adjusting screw	2	○	
3-62	K 0 0 0 0 1 0 0 2 5 2	10 bolt 25	4	○	
3-63	L M 1 8 0 B - 0 1 5 6 Z 2	Fixed shaft	2	○	
3-64	K 0 1 2 4 1 2 0 0 0 2	12 slotted nut low	2	○	
3-65	K 0 3 0 0 0 3 2 2 5 2	3.2 cotter pin 25	2	○	
3-66	K 0 0 0 7 0 8 0 2 0 3	8 bolt 20SW	2	○	
3-67	L M 1 8 0 B - 0 2 5 8 A 0	Rear roller Ass'y	1set	○	
3-68	K 7 4 0 0 0 0 0 1 8 D	76.2 roller 782	1	○	
3-69	L M 1 8 0 B - 0 2 5 9 Z 0	Rear roller shaft	1		
3-70	K 0 6 0 2 0 6 2 0 3 0	Bearing 6203Z	2		
3-71	K 4 0 1 5 1 3 6 6 5 0	1 fiber 3665	2		
3-72	K 6 8 1 0 0 0 0 0 7 0	Seal housing	2		
3-73	K 0 8 2 1 7 3 0 0 8 0	Oil seal MHA1730080	2		
3-74	K 0 0 0 6 0 6 0 1 5 2	6 bolt 15S	6		
3-75	L M 1 8 0 B - 1 2 0 1 Z 0	Front roller Ass'y	2sets		
3-76	L M 1 8 0 A - 1 2 0 4 Z 2	Front wheel bracket metal	2	○	
3-77	K 6 8 0 9 0 0 0 0 2 0	Roller 76 66	2	○	
3-78	K 0 6 0 8 0 6 2 0 1 0	Bearing 62012RS	4	○	
3-79	K 6 2 1 1 0 0 0 0 5 2	12.7 SGP collar 17.3 16.3	6	○	
3-80	K 5 0 3 0 5 1 2 3 0 0	0.5 C2801P washer 1230	4	○	
3-81	K 0 0 7 0 0 0 0 0 3 2	12 double-end stud 115	2	○	
3-82	K 5 0 0 0 1 2 0 0 0 2	12 washer	4	○	
3-83	L M 1 8 0 A - 0 2 7 1 B R	Rear mower bearing	1	○	
3-84	L M 1 8 0 A - 0 2 7 2 Z 0	Rear mower transmission shaft	1	○	
3-85	K 0 6 0 4 0 6 2 0 4 0	Bearing 6204ZZ	2	○	
3-86	K 5 0 3 0 5 2 0 4 3 0	0.5 C2801P washer 2043	2	○	
3-87	L M 1 8 0 A - 0 2 7 5 Z 2	Rear mower transmission pulley	1	○	
3-88	L M 1 8 0 A - 0 2 7 6 Z D	Rear reel transmission pulley	1	○	
3-89	K 0 5 0 0 5 0 5 2 5 0	5 double round key 525	2	○	
3-90	K 5 0 7 3 2 0 8 3 2 2	3.2 SPHC washer 832	2	○	
3-91	K 2 3 4 2 0 5 8 0 0 0	V belt OLB58	1	○	
3-92	K 2 3 2 3 0 2 9 0 0 0	V belt GLA29	2	○	
3-93	K 4 0 1 1 0 0 0 1 5 0	Packing	2	○	
3-94				○	
3-95					
3-96					
3-97	L M 1 8 0 B - 0 1 6 4 Z 2	Shaft cover	1		
3-98	K 0 0 0 0 0 8 0 4 0 2	8 bolt 40	1		
3-100	K 0 0 1 0 1 0 0 2 5 2	10 heat-treated bolt 25	2		
3-101	L M 1 8 0 B S 0 2 8 0 A 0	Reel cover rear for export COMP	1		
3-102	K 4 2 0 5 0 0 1 2 8 0	DANGER Mark	1		
3-103	K 4 2 0 5 0 0 1 3 2 0	PREVENT PREMATURE WEAR Mark	1		

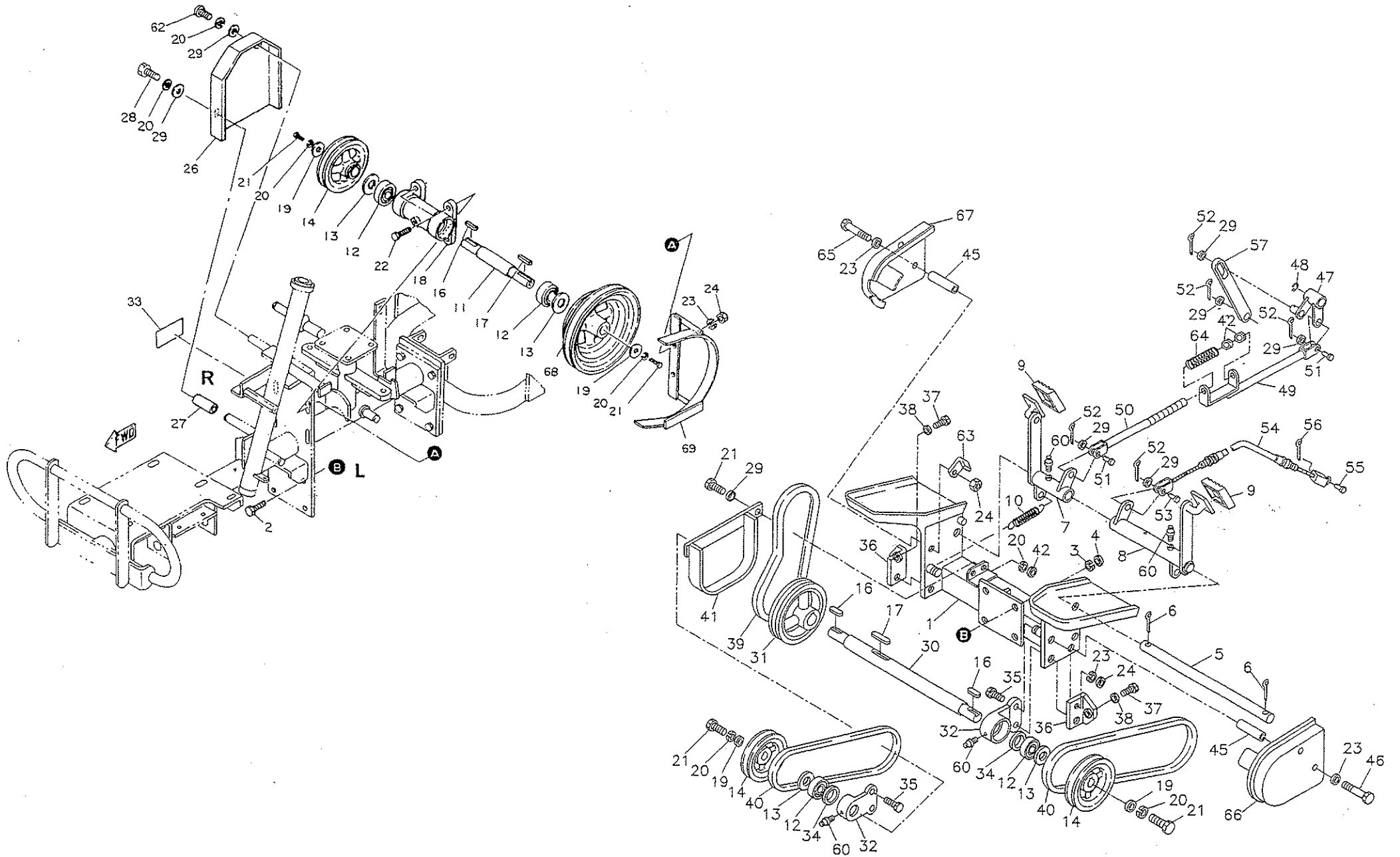
4 Frame Portion



Catalog No.	Code No.	Part Name	Qty /Unit	Common Part	Retail Price
4-1	LM180B-0301BD	Front frame	1		
4-2	K6010000080	17.3 bush with hole 2222	2	○	
4-3	K1440000012	Grease nipple	3	○	
4-4	K0000080202	8 bolt 20	3	○	
4-5	K0100080002	8 nut	4	○	
4-6	K0000120402	12 bolt 40	2	○	
4-7	K0200120002	12S washer	12	○	
4-8	K0100120002	12 nut	14	○	
4-9	LM180B-0401ZD	Rear frame	1	○	
4-10	K0000120352	12 bolt 35	4	○	
4-11	LM180A-0450Z2	Belt stopper upper	1	○	
4-12	LM180A-0451Z2	Belt stopper lower	1	○	
4-13	K0200080002	8S washer	6	○	
4-14	LM180A-0308Z2	Supporting shaft fixing bolt	2	○	
4-15	K0200100002	10S washer	11	○	
4-16	LM180BS0305ZD	Lower frame rear	1	○	
4-17	K0000100202	10 bolt 20	4	○	
4-18	LM180A-0343Z2	Right/left mower supporting shaft	2	○	
4-19	K6218000082	22.5 tapped collar 3820	2	○	
4-20	K0000100252	10 bolt 25	2	○	
4-21	K0100100002	10 nut	13	○	
4-22	LM180B-0347AD	Left mower lifting arm	1		
4-23	LM180B-0348AD	Right mower lifting arm	1		
4-24	K6000000320	22.3 bush 3025	4	○	
4-25	K1000000293	5 compression spring 38130	2	○	
4-26	LM180A-0345Z2	Spring bracket	4	○	
4-27	LM180BS0384Z2	Oscillating shaft	2		
4-28	K6040080402	8 round head pin 40	2	○	
4-29	K0340800002	8 Snap pin	2	○	
4-30	LM180A-0358ZD	Lifting lever left	1	○	

Catalog No.	Code No.	Part Name	Qty /Unit	Common Part	Retail Price
4-31	LM180A-0359ZD	Lifting lever right	1	○	
4-32	K1300000080	Handle grip 15.5	2	○	
4-33	LM180B-0380Z2	Wire mounting plate	2	○	
4-34	K1211111024	Right clutch lever E111102	2	○	
4-35	K1170051200	Hook wire 512	2	○	
4-36	K1030000048	2U hook spring 1480	2	○	
4-37	LM180A-0374BD	Arm-hooking frame	2	○	
4-38	K6151000062	10 double-hole shaft 77	2	○	
4-39	K5000100002	10 washer	2	○	
4-40	K0300032202	3.2 cotter pin 20	4	○	
4-41	K1030000038	1.2U hook spring 10.456	2	○	
4-42	LM180A-0379Z2	Spring clamp left	1	○	
4-43	LM180A-0385Z2	Spring clamp right	1	○	
4-44	LM180A-1003A2	Cover fitting shaft	1	○	
4-45	K0000120352	12 bolt 35	2		
4-46	K4201000420	SAXON Mark	1		
4-47	LM180A-2223Z0	MAIN CLUCH LEVER Mark	1		
4-48	LM180A-2226Z0	CUTTER REVOLUTION Mark	1		
4-49	K0000120302	12 bolt 30	2		

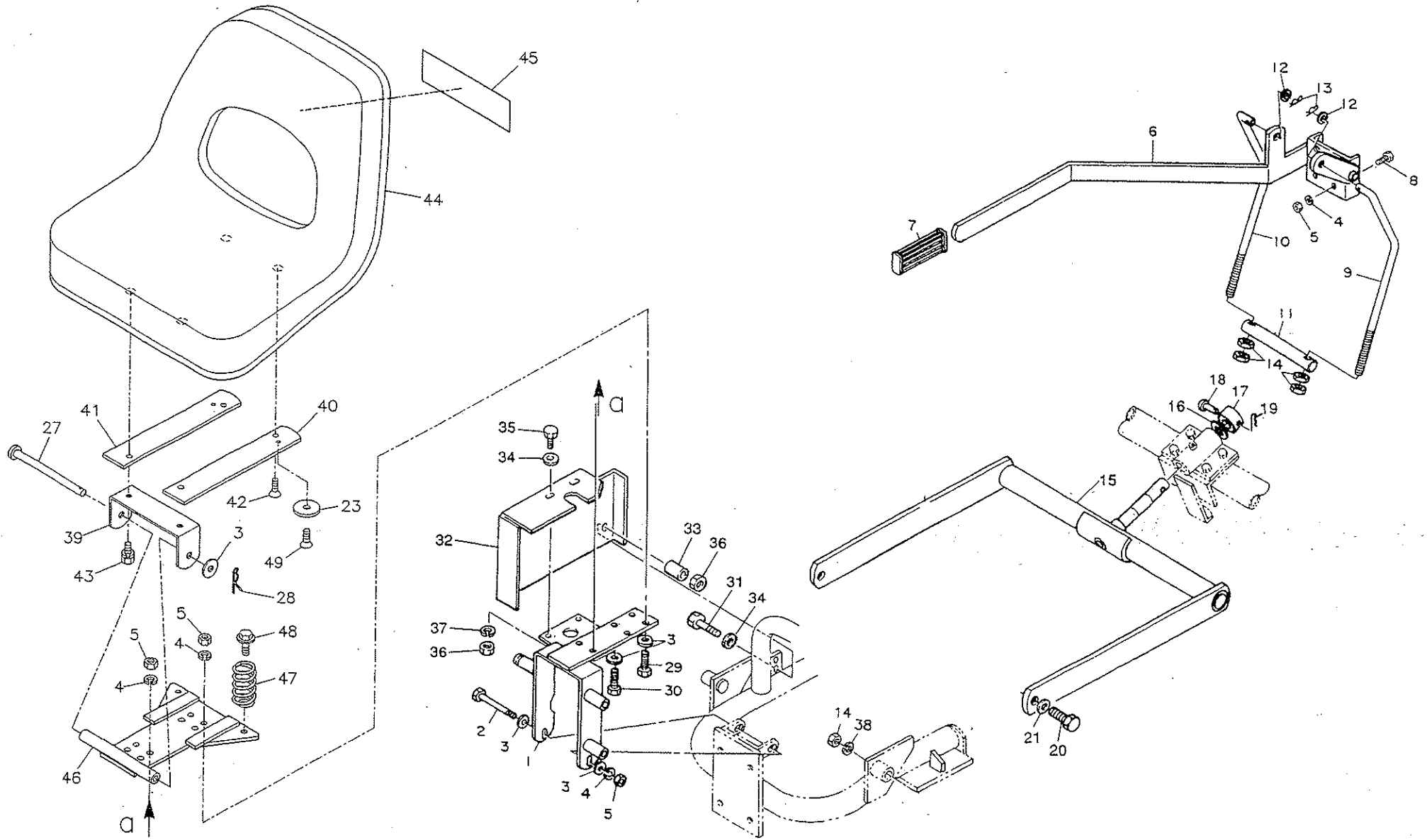
5 Intermediate Shaft Portion



Catalog No.	Code No.	Part Name	Qty /Unit	Common Part	Retail Price
5-1	LM180A-0303AD	Lower frame front	1	○	
5-2	K0000120352	12 bolt 35	8	○	
5-3	K0200120002	12S washer	12	○	
5-4	K0100120002	12 nut	14	○	
5-5	LM180A-0306A2	Brake shaft	1	○	
5-6	K0300032252	3.2 cotter pin 25	2	○	
5-7	LM180B-0309Z2	Brake pedal	1	○	
5-8	LM180B-0310Z2	Diff-lock pedal	1	○	
5-9	K4050000010	Pedal rubber 55-75	2	○	
5-10	K1030000042	2U hook spring 1480	2	○	
5-11	LM180A-0312A0	Intermediate shaft	1	○	
5-12	K0604062040	Bearing 6204ZZ	4	○	
5-13	K5030520430	0.5 C2801P washer 2043	4	○	
5-14	K242000002D	B1V pulley 20124	3	○	
5-15					
5-16	K0500505250	5 double round key 525	3	○	
5-17	K0500505350	5 double round key 535.5	2	○	
5-18	LM180B-0319ZD	Intermediate shaft bearing	1	○	
5-19	K5073208322	3.2 SPHC washer 832	4	○	
5-20	K0200080002	8S washer	2	○	
5-21	K0000080202	8 bolt 20	2	○	
5-22	K0000100402	10 bolt 40	4	○	
5-23	K0200100002	10S washer	12	○	
5-24	K0100100002	10 nut	13	○	
5-25					
5-26	LM180B-1035BR	Belt cover F	1		
5-27	LM180B-1036Z2	9.2 SGP collar 13.840	1		
5-28	K0003080502	8 bolt 55	1		
5-29	K5000080002	8 washer	16	○	
5-30	LM180A-0325A0	Intermediate shaft lower	1	○	
5-31	LM180A-0328A2	Intermediate shaft lower pulley	1	○	
5-32	LM180B-0330Z2	Intermediate shaft lower bearing	2	○	
5-33	K4200000160	Nameplate (with adhesive)	1		
5-34	K0812242110	Oil seal MHS224211	2	○	
5-35	K0000100352	10 bolt 35	4	○	

Catalog No.	Code No.	Part Name	Qty /Unit	Common Part	Retail Price
5-36	LM180A-1024A2	Scraper	2	○	
5-37	K0000060402	6 bolt 40	4	○	
5-38	K0100060002	6 nut	1	○	
5-39	K2342031000	V belt OLB31	1	○	
5-40	K2342041000	V belt OLB41	2	○	
5-41	LM180B-0337ZD	Belt stopper	1	○	
5-42	K0100080002	8 nut	3	○	
5-43					
5-44					
5-45	LM180A-1020A2	10.2 STKM collar 1662	4	○	
5-46	K0003100802	10 bolt 80	3	○	
5-47	LM180A-0425A2	Power converting metal part	1	○	
5-48	K0400012002	Stop ring E12	1	○	
5-49	LM180B-0481Z2	Brake rod rear	1	○	
5-50	LM180B-0480Z2	Brake rod front	1	○	
5-51	K6030080172	8 flat head pin 17	2	○	
5-52	K0300025162	2.5 cotter pin 16	5	○	
5-53	K6040080222	8 round head pin 22	1	○	
5-54	K1190069000	Diff-lock wire-690	1	○	
5-55	K6030050152	5 flat head pin 15	1	○	
5-56	K0300020162	2 cotter pin 16	1	○	
5-57	LM180A-0430A2	Connecting plate	1	○	
5-58					
5-59					
5-60	K1440000012	Grease nipple	4		
5-61	K5000100002	10 Washer	4	○	
5-62	K0042080202	8 cross-recessed round head screw 20	1		
5-63	LM180B-0390Z2	Brake pedal stopper	1		
5-64	K1000000072	3.5 compression spring 17.560	1		
5-65	K0003100902	10 bolt 90	1		
5-66	LM180AS2401ZD	Pulley cover left	1		
5-67	LM180AS2402ZD	Pulley cover right	1		
5-68	LM180A-0316Z2	Intermediate shaft double pulley	1		
5-69	LM180B-0335Z2	Belt stopper	1		

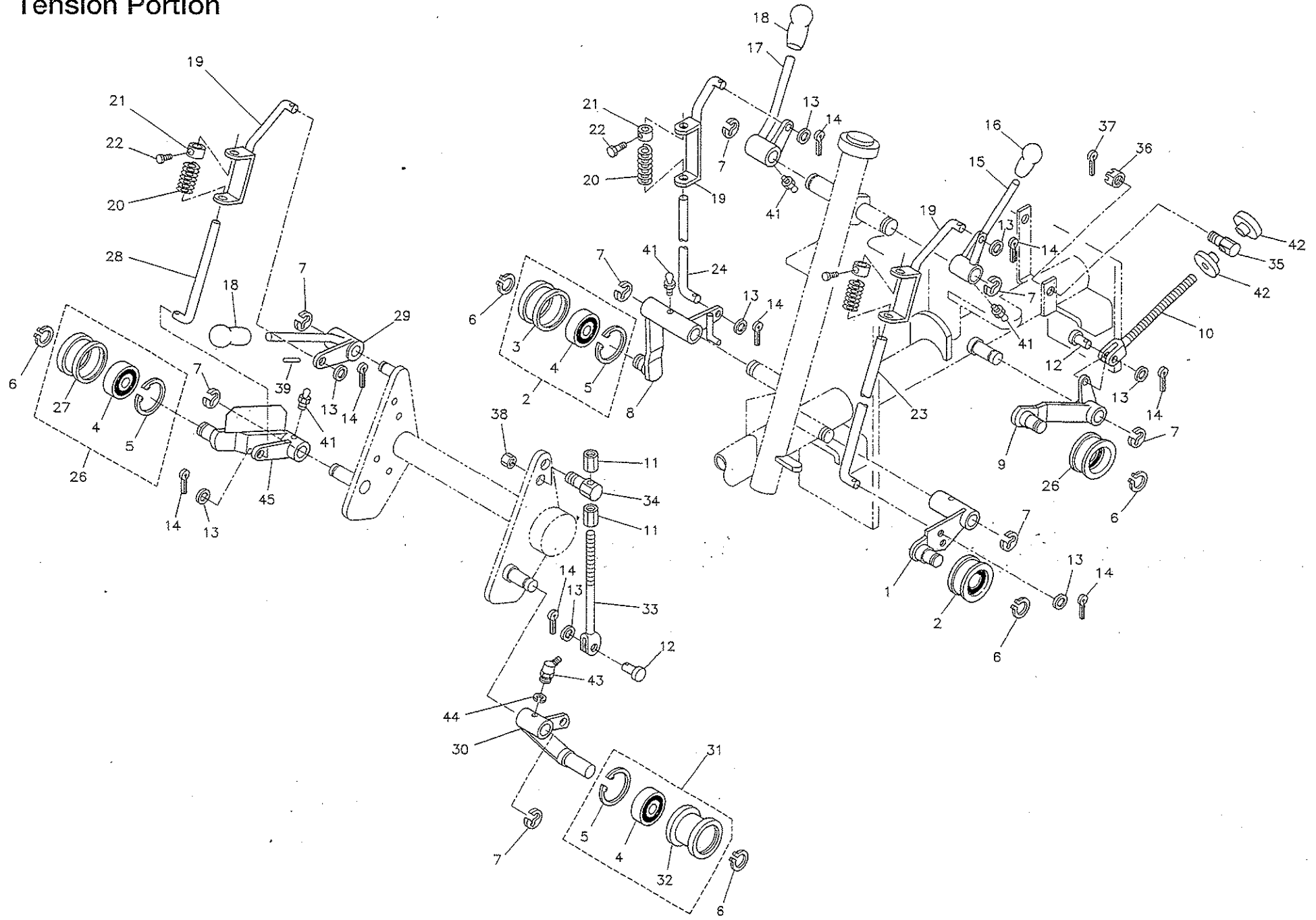
6 Rear Mower Lifting Portion



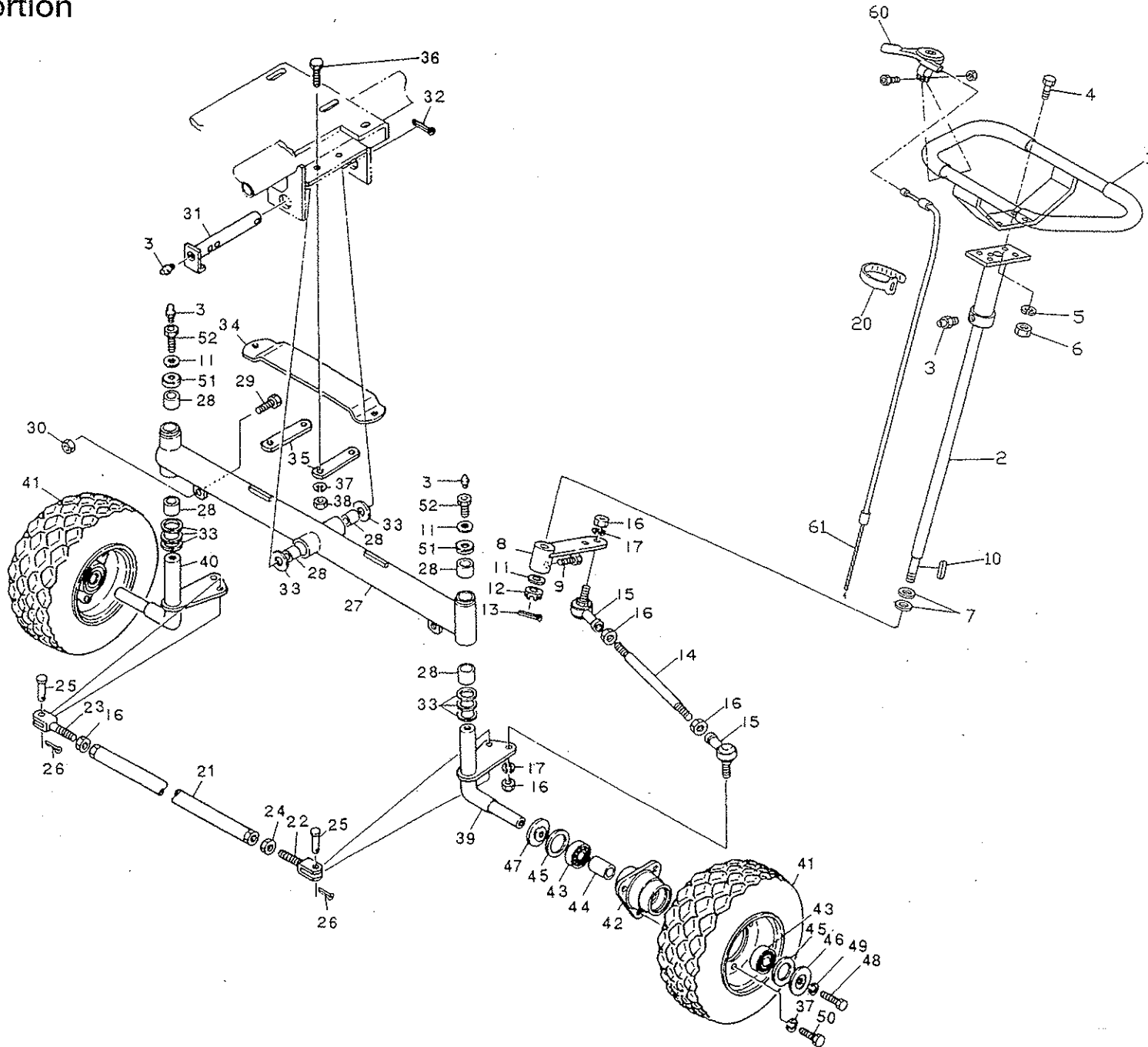
Catalog No.	Code No.	Part Name	Qty /Unit	Common Part	Retail Price
6-1	LM180B-0404ZD	Upper frame	1		
6-2	K0003101302	10 bolt 130	1		
6-3	K5000100002	10 washer	6	○	
6-4	K0200100002	10S washer	10	○	
6-5	K0100100002	10 nut	10	○	
6-6	LM180B-0408ZD	Lifting lever	1	○	
6-7	K1300000090	Square lever grip	1	○	
6-8	K0000100252	10 bolt 25	4	○	
6-9	LM180B-0409A2	Lifting connecting shaft left	1	○	
6-10	LM180B-0411A2	Lifting connecting shaft right	1	○	
6-11	LM180A-0410Z2	Lifting shaft	1	○	
6-12	K5000120002	12 washer	2	○	
6-13	K0331300002	13 snap pin	3	○	
6-14	K0100120002	12 nut	10	○	
6-15	LM180B-0461ZD	Rear mower lifting arm	1	○	
6-16	K5051025350	1 C5191P washer 2535	1	○	
6-17	LM180A-0463Z2	Stopper collar	1	○	
6-18	K6040080402	8 round head pin 40	1	○	
6-19	K0330800002	8 snap pin	1	○	
6-20	LM180A-0476Z2	Supporting shaft pin	2	○	
6-21	K5074516402	4.5 SPHC washer 1640	2	○	
6-22					
6-23	K1701000040	Saddle bracket rubber GTM	2	○	
6-24					
6-25					
6-26					
6-27	K1701000022	Saddle shaft GTM	1	○	
6-28	K0331000002	10 snap pin	2	○	
6-29	K0000100352	10 bolt 35	2	○	
6-30	K0000100302	10 bolt 30	2	○	

Catalog No.	Code No.	Part Name	Qty /Unit	Common Part	Retail Price
6-31	K0003080502	8 bolt 50	1		
6-32	LM180B-1037ZR	Brake cover	1		
6-33	LM180B-1038Z2	9.2 SGP collar 13.8 33	1		
6-34	K5000080002	8 washer	3	○	
6-35	K0000080152	8 bolt 15	2	○	
6-36	K0100080002	8 nut	3	○	
6-37	K0200080002	8S washer	2	○	
6-38	K0200120002	12S washer	2	○	
6-39	LM180BS0482ZD	Seat mounting plate	1		
6-40	LM180BS0483AD	Seat mounting reinforcement left	1		
6-41	LM180BS0484AD	Seat mounting reinforcement right	1		
6-42	K0041080152	8 cross-recessed countersunk head screw 15	2		
6-43	K0006080202	8 bolt 20S	2		
6-44	K1700000100	K2 seat	1		
6-45	K4201000430	SAXSON TRIPLE Mark	1		
6-46	LM180BS0470ZD	Saddle mounting bracket	1		
6-47	K1000000818	5 compression spring 3260	2		
6-48	K0007080202	8 bolt 20 SW	2		
6-49	K0041060122	6 cross-recessed countersunk head screw 12	2		

7 Tension Portion



8 Handle Portion

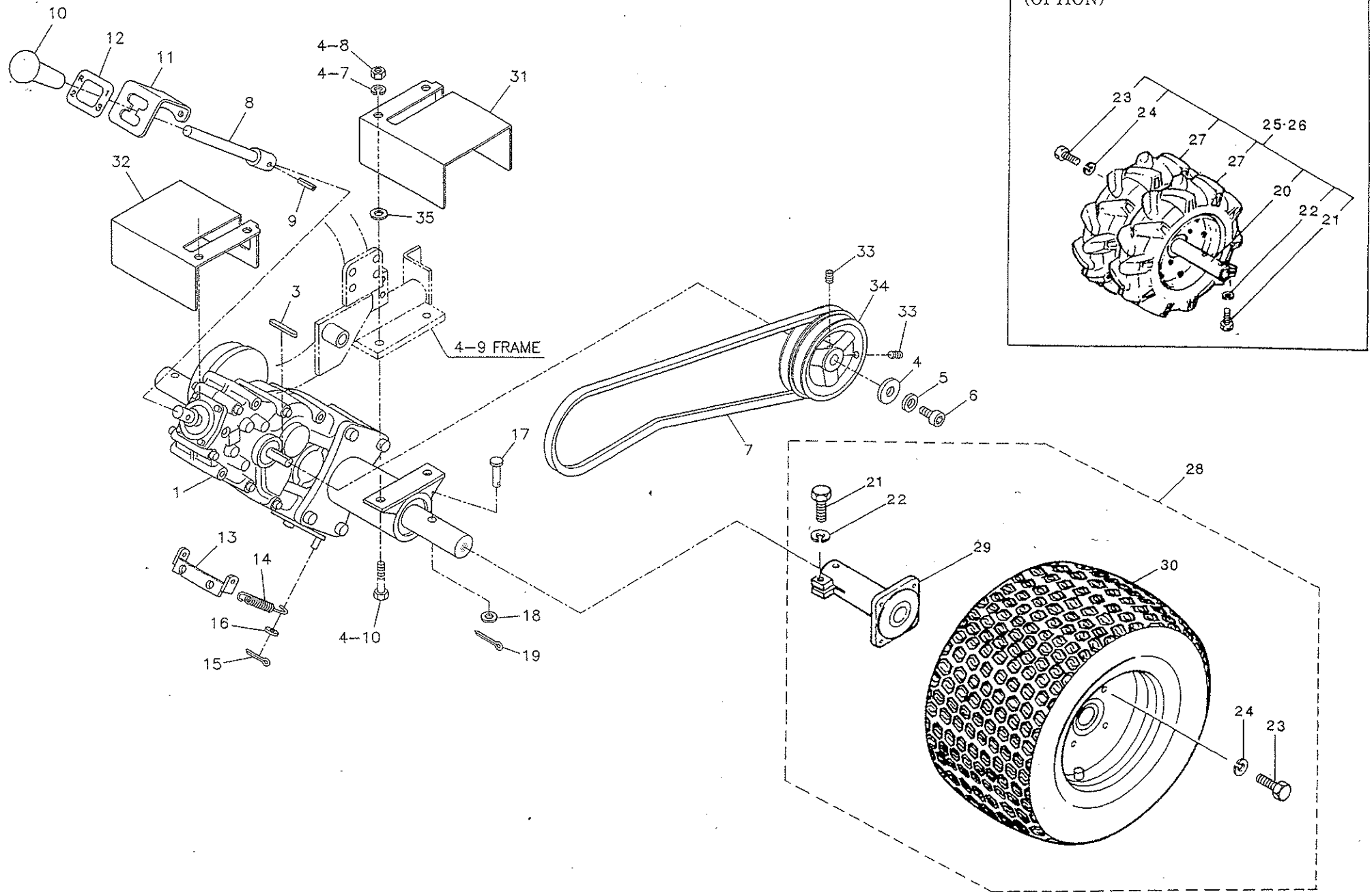


Catalog No.	Code No.	Part Name	Qty /Unit	Common Part	Retail Price
8-1	LM180BS0701ZD	Handle	1	○	
8-2	LM180A-0702CD	Handle shaft	1	○	
8-3	K1440000012	Grease nipple	4	○	
8-4	K0010060202	6 heat-treated bolt 20	4	○	
8-5	K0200060002	6S washer	4	○	
8-6	K0100060002	6 nut	4	○	
8-7	K5051017300	1 C5191P washer 1730	2	○	
8-8	LM180A-0706A2	Arm	1	○	
8-9	K0000080152	8 bolt 15	1	○	
8-10	K0500404310	4 double round key 431.5	1	○	
8-11	K5000120002	12 washer	1	○	
8-12	K0124120002	12 slotted nut low	1	○	
8-13	K0300032252	3.2 cotter pin 25	1	○	
8-14	LM180A-0713Z2	Relay rod	1	○	
8-15	K1604120000	L-ball LHSA12	2	○	
8-16	K0100120002	12 nut	5	○	
8-17	K0200120002	12S washer	2	○	
8-18					
8-19					
8-20	K4242000022	Wire band 115	1	○	
8-21	LM180A-0712Z2	Tie rod	1	○	
8-22	LM180A-0715Z2	Adjusting metal left	1	○	
8-23	LM180A-0716Z2	Adjusting metal right	1	○	
8-24	K0180120002	12 left-hand thread nut	1	○	
8-25	K6031100252	10 heat-treated flat head pin 25	2	○	
8-26	K0300032202	3.2 cotter pin 20	2	○	
8-27	LM180A-0601ZD	Front axle	1	○	
8-28	K6000000050	22.3 bush 2620	6	○	
8-29	K0000100402	10 bolt 40	2	○	
8-30	K0100100002	10 nut	2	○	

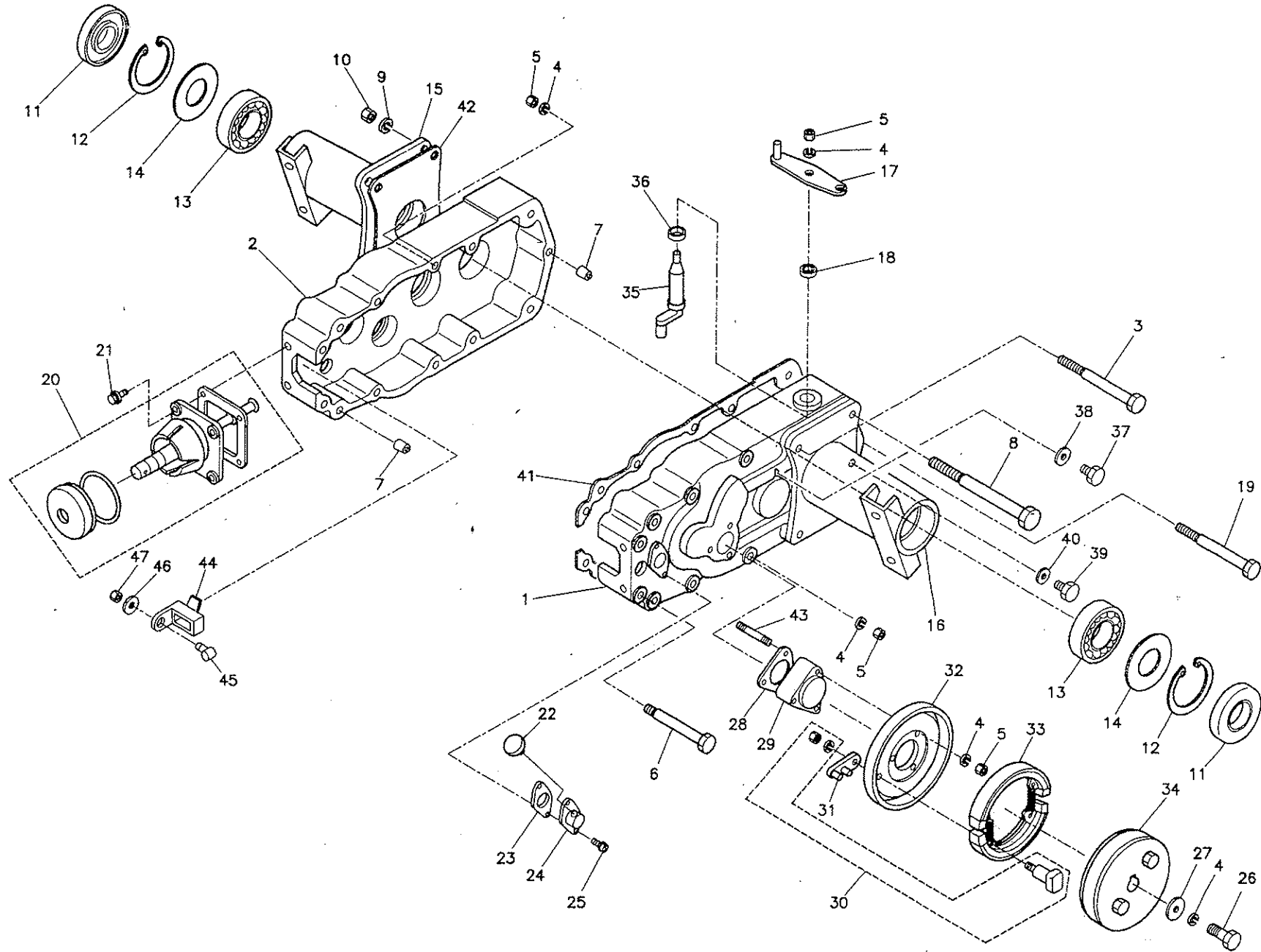
Catalog No.	Code No.	Part Name	Qty /Unit	Common Part	Retail Price
8-31	LM180A-0603Z2	Front pin	1	○	
8-32	K0300040322	4 cotter pin 32	1	○	
8-33	K5051022350	1 C5191P washer 2235	8	○	
8-34	LM180A-0620ZD	Plate spring	1	○	
8-35	LM180A-0621Z2	Plate spring mounting plate	2	○	
8-36	K0000080302	8 bolt 30	4	○	
8-37	K0200080002	8S washer	10	○	
8-38	K0100080002	8 nut	4	○	
8-39	LM180BS0606Z8	Front wheel axle left	1	○	
8-40	LM180BS0607Z8	Front wheel axle right	1	○	
8-41	K2060000010	Tire 4.00-5 Ass'y	2	○	
8-42	K2160000072	Front wheel mounting seat	2	○	
8-43	K0606062040	Bearing 6204RS	4	○	
8-44	K6212000180	20.2 STKM collar 25.4 40	2	○	
8-45	K4010132500	1 oil seat 3250	4	○	
8-46	K5090000222	Mounting seat outer cover	2	○	
8-47	K5090000232	Mounting seat inner cover	2	○	
8-48	K0000100252	10 bolt 25	2	○	
8-49	K0200100002	10S washer	2	○	
8-50	K0000080202	8 bolt 20	6	○	
8-51	LM180A-0616Z2	Dustproof cover	2	○	
8-52	K0071000082	12 bolt with nipple hole 15	2	○	
8-53					
8-54					
8-55					
8-56					
8-57					
8-58					
8-60	K1203531150	Throttle lever 353115	1		
8-61	LM180AU1605Z0	Throttle wire 1575	1		

LM180BSD

9 Mission Portion



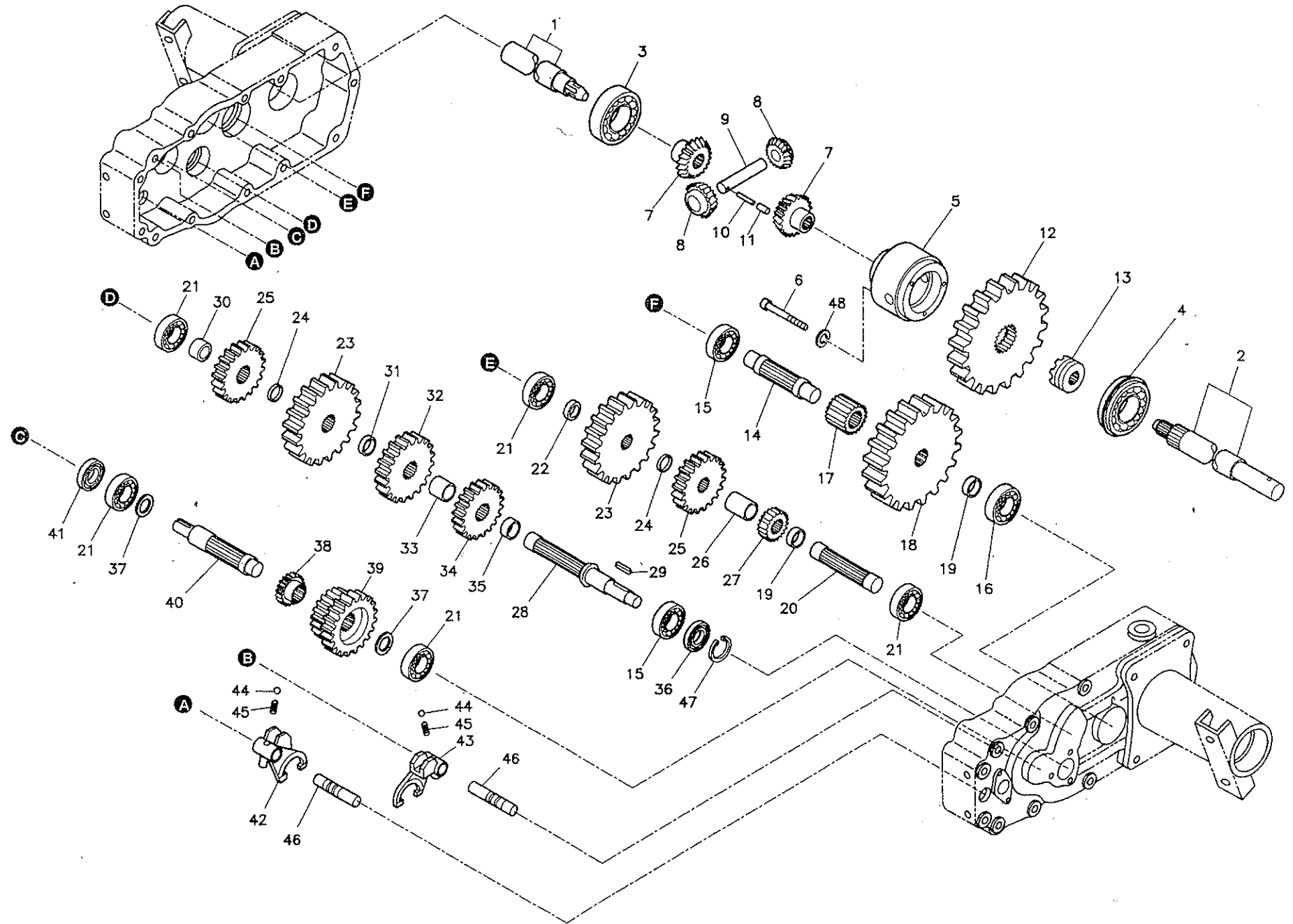
10 Mission Case Portion



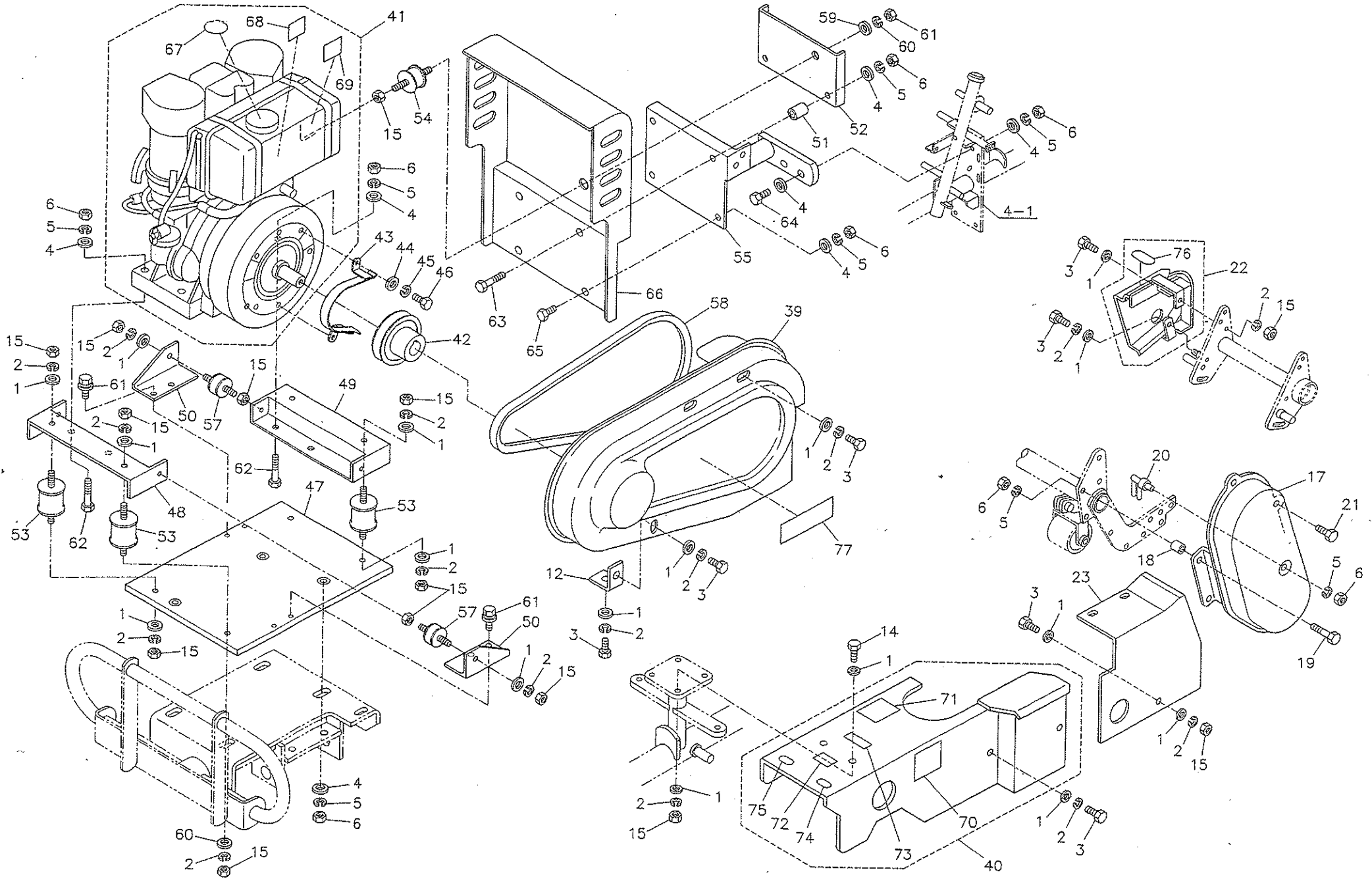
Catalog No.	Code No.	Part Name	Qty /Unit	Common Part	Retail Price
10-1	2 1 1 1 - 8 0 3 2 2 0	Case L	1		
10-2	2 1 1 1 - 8 0 3 3 1 8	Case R	1		
10-3	0 1 0 7 - 0 8 1 2 0 0	8 bolt 120	1		
10-4	0 4 1 0 - 0 8 0 0 0 0	8 washer S	14		
10-5	0 3 0 4 - 0 8 2 0 0 0	8 nut	11		
10-6	0 1 0 7 - 0 8 0 9 0 0	8 bolt 90	4		
10-7	2 1 5 5 - 4 0 1 7 0 9	Knock pipe	2		
10-8	2 1 0 1 - 4 0 4 9 0 7	Bolt 10-160	4		
10-9	0 4 1 0 - 1 0 0 0 0 0	10 washer S	4		
10-10	0 3 0 4 - 1 0 2 0 0 0	10 nut	4		
10-11	2 1 0 4 - 4 1 9 0 0 1	Oil seal 357213	2		
10-12	2 1 0 1 - 4 1 0 2 0 9	72 retaining ring R	2		
10-13	0 5 0 1 - 6 2 0 7 0 0	Ball BRG 6207	2		
10-14	2 1 0 2 - 4 2 6 2 0 3	Washer 35720.8	2		
10-15	2 3 1 0 - 6 0 5 1 0 8	Axle case R COMP	1		
10-16	2 3 1 0 - 6 0 5 0 0 9	Axle case L COMP	1		
10-17	2 3 4 0 - 4 0 8 7 1 3	Diff-lock lever COMP	1		
10-18	2 1 0 4 - 4 0 0 4 0 1	Oil seal 14248	1		
10-19	0 1 0 7 - 0 8 1 1 5 0	8 bolt 115	2		
10-20	2 4 4 0 - 0 0 5 7 0 0	Change Ass'y	1		
10-21	0 0 2 7 - 0 8 0 2 0 1	8 bolt SW20	4		
10-22	2 1 0 5 - 4 0 4 0 0 2	Plug G20	1		
10-23	2 1 5 3 - 4 0 4 8 0 1	PK oil filling port	1		
10-24	2 1 5 7 - 4 0 1 9 0 5	Oil filling port	1		
10-25	0 0 3 0 - 0 6 0 1 6 0	6 round head screw S16	2		
10-26	0 1 0 7 - 0 8 0 2 5 0	8 bolt 25	1		
10-27	2 1 0 2 - 4 2 7 3 0 9	Washer 8283.2	1		
10-28	2 1 5 3 - 4 0 7 0 0 0	PK brake	1		
10-29	2 1 1 4 - 4 0 1 0 0 9	Holder BK	1		
10-30	2 4 3 5 - 0 0 0 5 0 5	Camshaft Ass'y	1		

Catalog No.	Code No.	Part Name	Qty /Unit	Common Part	Retail Price
10-31	2 1 4 3 - 4 0 3 9 0 6	Lever BK	1		
10-32	2 1 3 5 - 6 0 0 8 0 9	Back plate	1		
10-33	2 4 3 5 - 0 0 0 4 0 6	Brake shoe Ass'y	1		
10-34	2 1 3 5 - 4 0 3 5 2 3	Drum BK	1		
10-35	2 1 4 4 - 4 0 5 3 0 5	Shifter (diff)	1		
10-36	2 1 0 3 - 4 0 5 4 0 7	Collar 15206.5	1		
10-37	2 1 0 5 - 4 0 0 1 0 3	Plug 8	1		
10-38	2 1 0 5 - 4 0 0 2 0 2	Gasket 8	1		
10-39	2 1 0 5 - 4 0 0 8 0 6	Plug 14	1		
10-40	2 1 0 5 - 4 0 0 9 0 5	Gasket 14	1		
10-41	2 1 5 3 - 7 0 0 5 0 9	PK case	1		
10-42	2 1 5 3 - 4 0 7 3 0 7	PK axle case	2		
10-43	0 1 7 6 - 0 8 0 5 0 3	8 stud 50	3		
10-44	2 3 4 0 - 4 0 4 0 0 1	Stopper COMP	1		
10-45	2 1 5 4 - 4 0 2 4 0 0	Stopper pin	1		
10-46	2 1 0 2 - 4 0 8 4 0 9	Washer 8221	1		
10-47	0 3 0 4 - 0 8 3 0 0 0	8 nut	1		

11 Gear Portion



12 Engine Portion

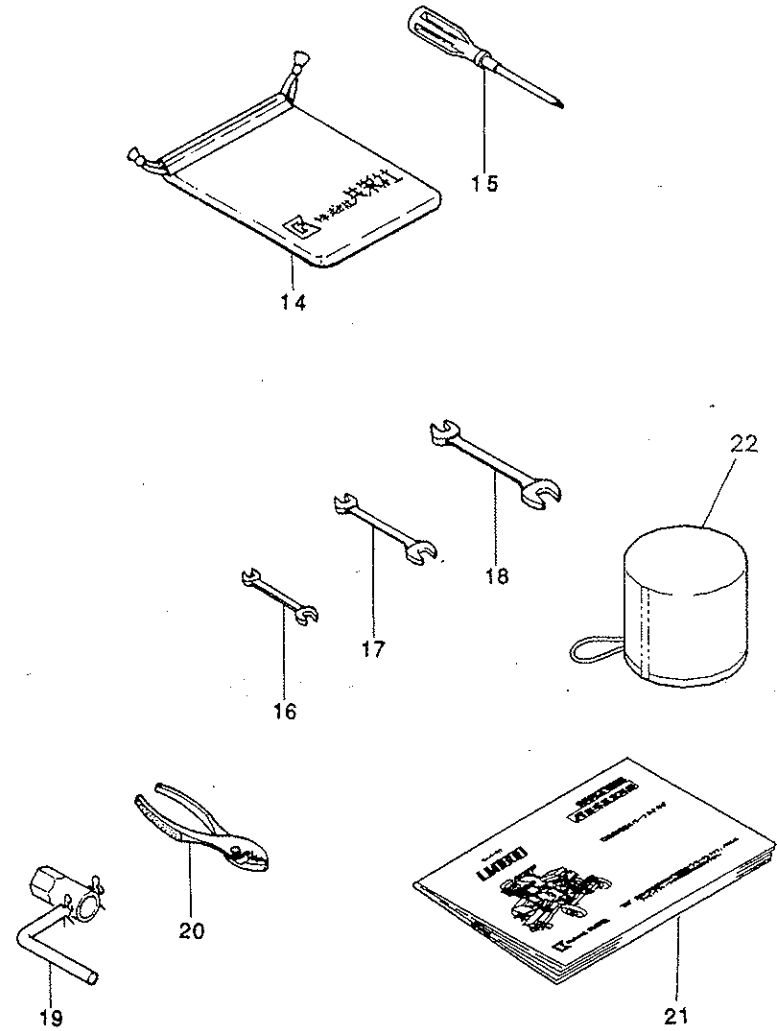
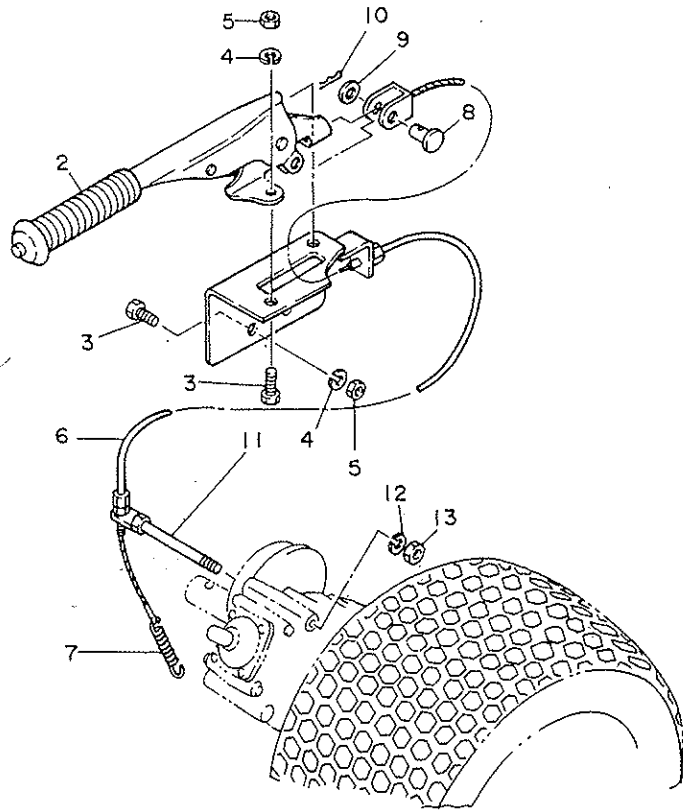


Catalog No.	Code No.	Part Name	Qty /Unit	Common Part	Retail Price
12-1	K5000080002	8 washer	22	○	
12-2	K0200080002	8S washer	21	○	
12-3	K0000080202	8 bolt 20	3	○	
12-4	K5000100002	10 washer	15	○	
12-5	K0200100002	10S washer	16	○	
12-6	K0100100002	10 nut	16	○	
12-7					
12-8					
12-9					
12-10					
12-11					
12-12	LM180BU1002Z2	Cover mounting bracket	1	○	
12-13					
12-14	K0000080252	8 bolt 25	3	○	
12-15	K0100080002	8 nut	21	○	
12-17	LM180B-1026ZR	Belt cover C	1	○	
12-18	K6211000052	12.7 SGP collar 17.3163	2	○	
12-19	K0000100402	10 bolt 40	2	○	
12-20	LM180A-1025Z2	Scraper	1	○	
12-21	K0000080152	8 bolt 15	1	○	
12-22	LM180BS1042A0	Belt cover D COMP	1	○	
12-23	LM180B-1019ZR	Belt cover E	1	○	
12-24	K0000100452	10 bolt 45	4	○	
12-37	K0000080122	8 bolt 12	2		
12-38	LM180B-1042Z	Supplementary cover	1		
12-39	LM180AU1017ZR	Belt cover A	1		
12-40	LM180BU1040B0	Belt cover B COMP	1		
12-41	LM180BU1613Z0	Robin DY35D74150 COMP	1		
12-42	LM180AU1602Z2	Engine pulley	1		
12-43	LM180AU1604Z2	Belt stopper	1		
12-44	K5000060002	6 washer	2		
12-45	K0200060002	6S washer	2		
12-46	K0000060152	6 bolt 15	2		
12-47	LM180BU1606ZD	Engine base	1		
12-48	LM180BU1607ZD	Engine mount front	1		

Catalog No.	Code No.	Part Name	Qty /Unit	Common Part	Retail Price
12-49	LM180BU1608ZD	Engine mount rear	1		
12-50	LM180BU1609ZD	Rubber cushion mounting angle	2		
12-51	LM180BU1611Z2	11 collar 2025.5	2		
12-52	LM180BU1612ZD	Pitching stopper mounting plate	1		
12-53	K4040000110	NOK rubber cushion RS1075A2	4		
12-54	K4040000120	NOK rubber cushion RS1060A5	1		
12-55	LM180BS2501ZR	Shield plate mounting bracket	1		
12-56					
12-57	K4040000140	Rubber cushion ME-35	2		
12-58	K2343047000	V belt GLB47	1		
12-59	K5073208322	3.2 SPHC washer 832	1		
12-60	K5012308242	2.3 SPCC washer 824	1		
12-61	K0007080152	8 bolt 15SW	4		
12-62	K0003100552	10 bolt 55	4		
12-63	K0003100502	10 bolt 50	2		
12-64	K0000100352	10 bolt 35	2		
12-65	K0000100202	10 bolt 20	2		
12-66	LM180BS2503ZR	Shield plate	1		
12-67	K4205001300	ENGINE OIL WARNING Mark	1		
12-68	K4205001330	NOISE WARNING Mark	1		
12-69	K4209000720	LWA 105 Mark	1		
12-70	K4205001290	HEALTH&SAFETY WARNING Mark	1		
12-71	K4205001310	SAFETY INSTRUCTIONS Mark	1		
12-72	K4209000640	CE Mark	1		
12-73	LM180A-2221Z0	MADE IN JAPAN Mark	1		
12-74	LM180A-2224Z0	DIFFER LOCK PEDAL Mark	1		
12-75	LM180A-2225Z0	BRAKE PEDAL Mark	1		
12-76	LM180A-2226Z0	CUTTER REVOLUTION Mark	1		
12-77	LM180B-1013Z0	LM180B Mark	1		

LM180BSD

13 Side Brake Installation and Accessory Tools



Catalog No.	Code No.	Part Name	Qty /Unit	Common Part	Retail Price
13-1					
13-2	K 1 7 2 4 0 0 0 2 0	Side brake lever Ass'y	1	○	
13-3	K 0 0 0 0 0 8 0 2 0 2	8 bolt 20	4	○	
13-4	K 0 2 0 0 0 8 0 0 0 2	8S washer	6	○	
13-5	K 0 1 0 0 0 8 0 0 0 2	8 nut	7	○	
13-6	K 1 1 2 0 0 8 5 0 1 0	Brake wire 850	1	○	
13-7	K 1 0 3 0 0 0 0 0 2 D	2.9U hook spring 15.288	1	○	
13-8	K 6 0 3 0 1 2 0 2 4 2	12 flat head pin 24	1	○	
13-9	K 5 0 0 0 1 2 0 0 0 2	12 washer	1	○	
13-10	K 0 3 3 1 3 0 0 0 0 2	13 snap pin	1	○	
13-11	L M 1 8 0 A - 0 4 5 8 Z 2	Wire fixing bar	1	○	
13-12	K 0 2 0 0 1 0 0 0 0 2	10S washer	1	○	
13-13	K 0 1 0 0 1 0 0 0 0 2	10 nut	1	○	
13-14	K 4 8 0 1 0 0 0 0 2 0	Tool bag	1	○	
13-15	K 4 8 2 0 0 0 0 0 1 0	+/- screwdriver 100mm	1	○	
13-16	K 4 8 1 0 1 0 0 1 2 2	Spanner 10x12	1	○	
13-17	K 4 8 1 0 1 3 0 1 7 2	Spanner 13x17	2	○	
13-18	K 4 8 1 0 1 9 0 2 2 2	Spanner 19x22	2	○	
13-19	K 4 8 1 2 2 7 0 0 0 2	Box spanner 27	1	○	
13-20	K 4 8 3 0 0 0 0 0 1 2	Pliers 150mm	1	○	
13-21	L M 1 8 0 B - 0 0 F - 0 2	Handling manual & parts catalog	1		
13-22	K 4 1 1 0 0 0 0 0 2 0	Cleaner cover medium	1		

Catalog No.	Code No.	Part Name	Qty /Unit	Common Part	Retail Price

MEMO

EC Declaration of Conformity

We, Kyoisha Co., Ltd. of 1-26 Miyuki-cho, Toyokawa, Aichi-pref., Japan declare that :

Equipment	Ride-on lawnmower
Model name / number	BARONESS / LM180BU

in accordance with the following Directives :

89/392/EEC The Machinery Directive and its amending directives

has been designed and manufactured to the following specifications :

EN 292-1 Safety of machinery – Basic concepts, general principles for design –
Part 1 : Basic terminology, methodology

EN 292-2 Safety of machinery – Basic concepts, general principles for design –
Part 2 : Technical principles and specifications

EN 836 Garden equipment – Powered lawnmowers – Safety

I hereby declare that the equipment named above has been designed to comply with the relevant sections of the above referenced specifications.

Signed by : *Katsunaki Makino*

Name : Katsunaki Makino

Position : Development Dept. Manager

Date : February 25, 2002

Manufacturers Declaration of Conformity for

Product Identification

Product : Ride-on lawnmower
Brand : BARONESS (Saxon)
Type : LM180BU
Starting Serial No. : 12964
Measured Sound Power Level : LWA 103.87 dB
Guaranteed Sound Power Level : LWA 105 dB
Manufacturer :
Name : Kyoisha Co., Ltd.
Address : 1-26 Miyuki-cho, Toyokawa, Aichi-pref.,
Japan
Technical Documentation
Keeper's Name : Kyoisha Co., Ltd.
Keeper's Address : 1-26 Miyuki-cho, Toyokawa, Aichi-pref.,
Japan

Conformity Assessment Procedure :

Internal Control of Production with Assessment of
Technical Documentation and Periodical Checking
(Annex VI) of 2000/14/EC

Involved Notified Body

Name : SNC-H
Address : 11, Route de Sandweiler
5230 Sandweiler
Luxembourg

Technical Construction File

Date : February 05, 2003
Technical Construction File No. : No. TC180BU-01
Test Laboratory : TUV Rheinland Luxembourg GmbH
Centre Commercial "Le2000" Z.I. Route de Bettembourg
L-3378 LIVANGE Luxembourg

Means of conformity

The product is in conformity with the Directive relating to the noise emission in the environment by
equipment for use outdoors 2000/14/EC, in accordance with Article 12 of the Directive.

References of other Community Directives applied

89/392/EEC

Signature :



Katsusaki Makino
Manager
Development Dept.
Kyoisha Co., Ltd.

Date :

February 07, 2003

KYOEISHA CO., LTD.
TURF CARE MACHINERY
HEAD OFFICE
1-26, MIYUKI-CHO, TOYOKAWA,
AICHI-PREF. 442-8530 JAPAN.
TEL: (0533) 84-1221
FAX: (0533) 84-1220